

- Back**
- o PushPull Power
 - o Flat Cable Connectors SEK
 - o *har-mik®*
 - o D-Sub
 - o InduCom

● **Applications**

Product details

09 02 064 3214 Cable connector

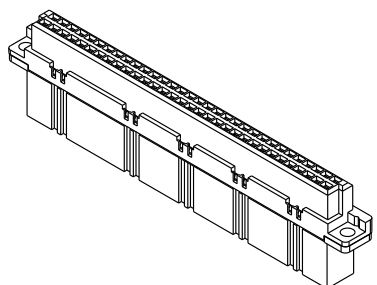
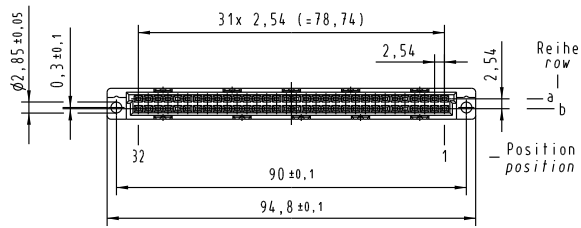
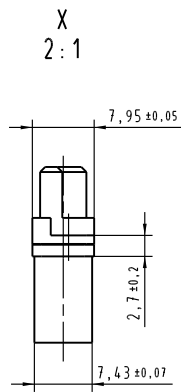
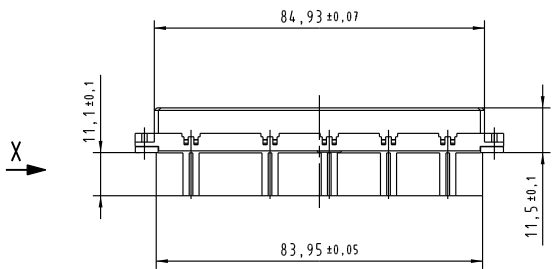
Type	Type B
Standard/Inverse	Standard
Contact gender	Female contacts
Size	Whole size
Number of contacts	64 poles
Contact arrangement	Rows a and b
Termination	Crimp contacts
Performance Class	none
Contacts	Order contacts separately
Current	2 A max.
Clearance/ Creepage	1.2 / 1.2 mm min.
RoHS compliant	Yes

Inquiry

Available Downloads

Title	Format
-------	--------

Alle Rechte vorbehalten. All rights reserved.



	Techn. Character. ergänzend/complementary IEC 60603-2			Nicht tolerierte Maß/Free size tolerances ergänzend/complementary IEC 60603-2		
	Defail. 21.11.05 Insp. 21.11.05 Stand.	Leh. Kfoe.	Maßstab/Scale 1:1 (2:1)	Bauform/type B Federleiste Crimp female connector crimp		
HARTING Electronics GmbH & Co. KG D-32339 ESPELKAMP			TB 09 02 064 3214			
33119 Mod.	Dat.	Name				