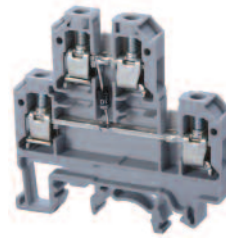


Indicator/ Diode Circuit

Altech offers different types of terminals incorporating electronic components for signal converting, circuit protection and status indication. Based on customer requirements, specially assembled terminals are offered.



CDL4U(E)D1/D2



With arc suppression circuit for contactors and solenoid valves - DC

CDL4U(E)D3



Diode circuit for reverse polarity protection

Terminal Width	6 mm			6 mm		
Height x Length	54 x 55.5 mm			54 x 55.5 mm		
Terminal Voltage	300 V~			300 V~		
Stripping Length	9 mm			9 mm		
Insulation Material	Polyamide 6.6			Polyamide 6.6		
Approvals						
Wire Range	22-10 AWG	0.5-4 sq.mm	22-10 AWG	22-10 AWG	0.5-4 sq.mm	22-10 AWG
Voltage Rating	600 V	400 V	600 V	600 V	400 V	600 V
Current Rating	25 A	32 A	35 A	25 A	32 A	35 A
Torque	7 lb-in	0.5 Nm	7 lb-in	7 lb-in	0.5 Nm	7 lb-in

Other Approvals



Terminal Block

End Plate

DIN Rail for ordering information refer to page 70

End Stop for ordering information refer to page 72

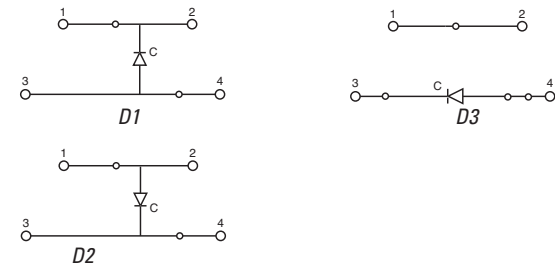
Internal Jumper 2 pole
3 pole
4 pole
10 pole

Current Bars 2 pole
3 pole
4 pole
10 pole
10 pole (breakable)
100 pole

Shorting Sleeve & Screw

Marking Tags

Cat. No.	Std. Pk.	Cat. No.	Std. Pk.
CDL4U(E)D1	100	CDL4U(E)D3	100
CDL4U(E)D2	100		
EPCDL4U	50	EPCDL4U	50
CA702	50	CA702	50
CA802	50	CA802	50
CA727/2	100	CA727/2	100
CA727/3	100	CA727/3	100
CA727/4	100	CA727/4	100
CA727/10	10	CA727/10	10
CA703/1	100	CA703/1	100
CA704/2	100	CA704/2	100
CA705/3	100	CA705/3	100
CA732/10	100	CA732/10	100
CA732/10-A	100	CA732/10-A	100
CA732/100	10	CA732/100	10
CA607/S/Q	100	CA607/S/Q	100
MT2	100	MT2	100



Diode Specifications

Diode	1N 4007
Diode Reverse Voltage	1000 V
Diode Current	1 A

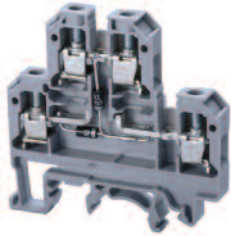
COLOR BLOCKS
(other than grey standard)

When ordering please add color suffix to Cat. No.

Example: CTS2.5U-N/R

Color	Ordering Suffix	
Red	R	
Blue	BU	
Black	BL	
Orange	O	
Green	G	
Yellow	Y	
White	W	
Beige	BG	
Dark Brown	DB	

CDL4U(E)DD1/DD2



Diode circuit for lamp testing

6 mm

54 x 55.5 mm

300 V~

9 mm

Polyamide 6.6

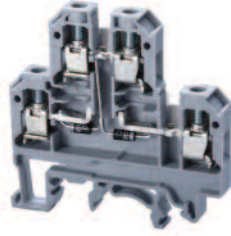
22-10 AWG	0.5-4 sq.mm	22-10 AWG
600 V	400 V	600 V
25 A	32 A	35 A
7 lb-in	0.5 Nm	7 lb-in



Cat. No.	Std. Pk.
CDL4U(E)DD1	100
CDL4U(E)DD2	100
EPCDL4U	50
CA702	50
CA802	50
CA727/2	100
CA727/3	100
CA727/4	100
CA727/10	10
CA703/1	100
CA704/1	100
CA705/1	100
CA732/10	100
CA732/10-A	100
CA732/100	10
CA607/S/Q	100
MT2	100



CDL4U(E)DD3/DD4



Diode circuit for lamp testing

6 mm

54 x 55.5 mm

300 V~

9 mm

Polyamide 6.6

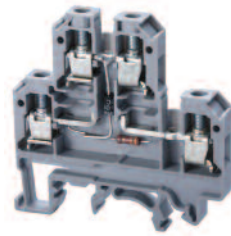
22-10 AWG	0.5-4 sq.mm	22-10 AWG
600 V	400 V	600 V
25 A	32 A	35 A
7 lb-in	0.5 Nm	7 lb-in



Cat. No.	Std. Pk.
CDL4U(E)DD3	100
CDL4U(E)DD4	100
EPCDL4U	50
CA702	50
CA802	50
CA727/2	100
CA727/3	100
CA727/4	100
CA727/10	10
CA703/1	100
CA704/1	100
CA705/1	100
CA732/10	100
CA732/10-A	100
CA732/100	10
CA607/S/Q	100
MT2	100



CDL4U(E)D4



Diode circuit for lamp testing with LED series resistance

6 mm

54 x 55.5 mm

12V~/24 V~

9 mm

Polyamide 6.6

22-10 AWG	0.5-4 sq.mm	22-10 AWG
600 V	400 V	600 V
25 A	32 A	35 A
7 lb-in	0.5 Nm	7 lb-in



Cat. No.	Std. Pk.
CDL4U(E)D4	100
EPCDL4U	50
CA702	50
CA802	50
CA727/2	100
CA727/3	100
CA727/4	100
CA727/10	10
CA703/1	100
CA704/1	100
CA705/1	100
CA732/10	100
CA732/10-A	100
CA732/100	10
CA607/S/Q	100
MT2	100



CDL4U(E)DD5



Diode circuit for lamp testing with LED series resistance

6 mm

54 x 55.5 mm

12V~/24 V~

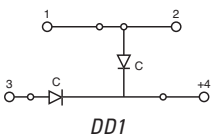
9 mm

Polyamide 6.6

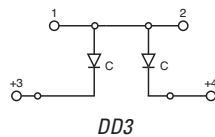
22-10 AWG	0.5-4 sq.mm	22-10 AWG
600 V	400 V	600 V
25 A	32 A	35 A
7 lb-in	0.5 Nm	7 lb-in



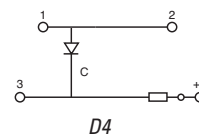
Cat. No.	Std. Pk.
CDL4U(E)DD5	100
EPCDL4U	50
CA702	50
CA802	50
CA727/2	100
CA727/3	100
CA727/4	100
CA727/10	10
CA703/1	100
CA704/1	100
CA705/1	100
CA732/10	100
CA732/10-A	100
CA732/100	10
CA607/S/Q	100
MT2	100



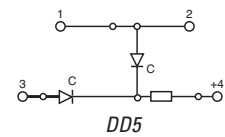
DD1



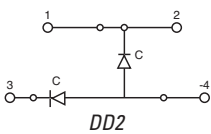
DD3



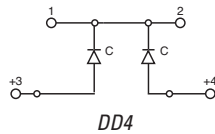
D4



DD5



DD2



DD4