

Touch Pads — TP-2 and TP-4

FEATURES & BENEFITS:

- Fully Self-Contained • Easily Mounted • Long Life
- Easily Activated • Rated for Outdoor Use
- Suitable for High Pressure Washdowns



Specifications

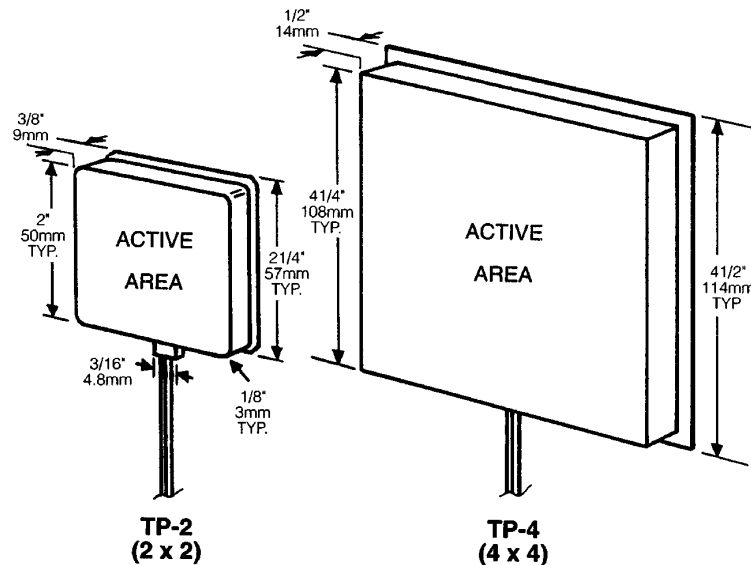
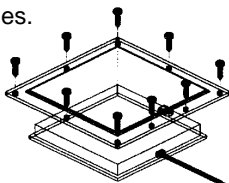
Part Designation	TP-2, TP-4
Exterior Housing	PVC
Color	Black (custom colors available).
Stocked Sizes	2" x 2" and 4" x 4"
Lead Wire	TP-2 , AWG #24/2, 18" long (455mm) TP-4 , AWG #18/2, 24" long (610mm)
Actuation Force	TP-2, TP-4 , 5 oz. nominal center actuation. Custom actuation force available.
Recommended Voltage & Current	28 VAC or VDC, 1.0 amps maximum.
Chemical/Moisture Resistance	Water tight. Resistant to mild acids, and bases, alcohols, many solvents, unless submerged or in continuous contact.
Operating Temperature	0 °F to 120 °F (−18 °C to 50 °C)

Options

- Custom colors: red, green, yellow, blue
- Wire options: zip cord or coil cord
- Custom printing graphics
- Logos
- Custom actuation force

TP4 Hold-Down Kit

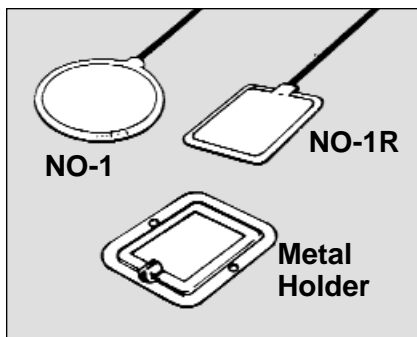
Kit includes a 5.63" stainless steel mounting frame with 9 screws for pre-punched holes.



APPLICATIONS:

- Machine Activation • Machine Stop
- Wall Mount Door Openers
- Handicap Access Control

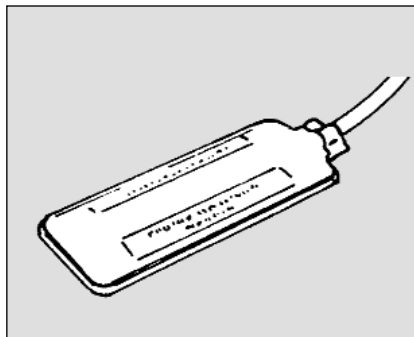
Foot/Hand/Sensing Cell Switches



NO-1 NO-1R (rectangular) Normally open sensing cells

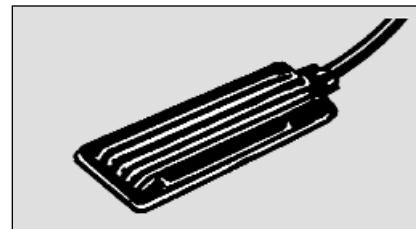
Low profile sealed sensing switches in wafer form. May be used under objects to detect removal; as surface mount NO pushbutton; or as a limit switch in tight quarters. 2.5 lb. nominal sensitivity. With positive bottoming, will withstand continuous body weight. 1.5" diameter round, or 1.0" x .75" rectangle. .188" thick. Water resistant, sealed casing. 22/2 AWG, 18" lead wire. Mount with mastic cement, epoxy or DA-12 adhesive tape.

Metal Holder provides secure hold down for NO-1R rectangular sensing cell.



TAH Hand Switch Now responds to flex or squeeze.

Sealed. White vinyl. Sensitive switch for easy signaling. 2" x 5" x 11/32" thick. Lead wire is 18/2 AWG 6' long.



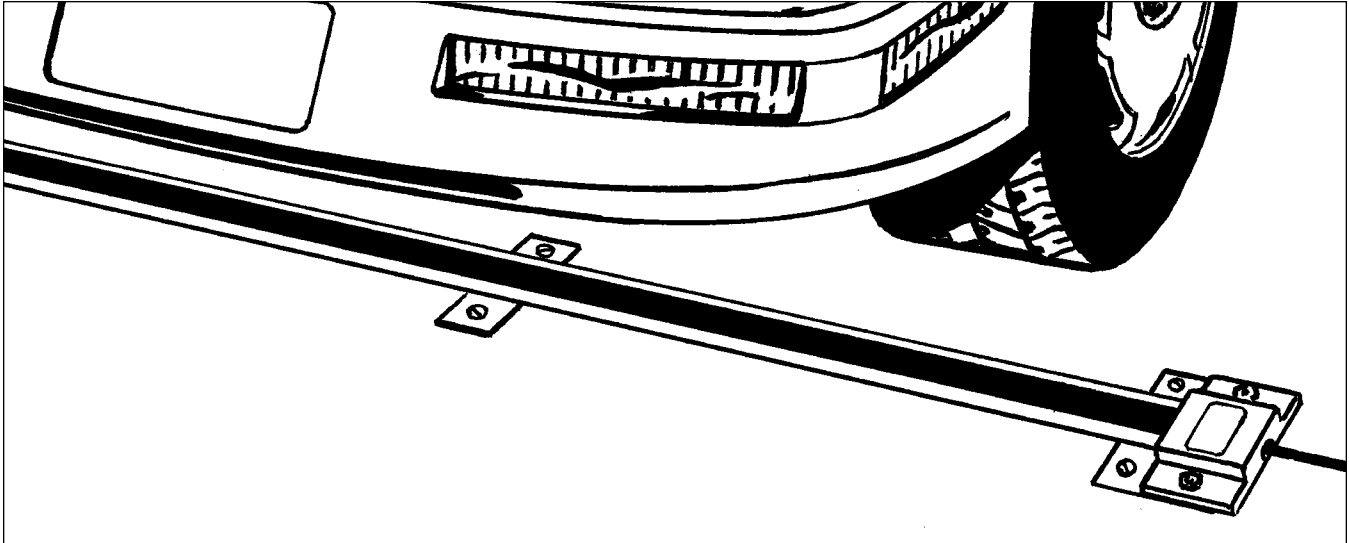
111 /111B Controflex foot switches

Sealed. Black vinyl pad 2" x 5" .375" thick. Rated 100 watts 5 lbs. nominal foot pressure. Lead wire is 18/2 AWG 5/16" dia. 6' long. Momentary, normally open contacts 40 oz. sensitivity.

Model 111-B is more sensitive at 12 oz. nominal sensitivity.

RBMA Vehicle Sensing Switch

APPLICATIONS: • Portable Traffic Control • Vehicle Counting Drive-Ins • Toll Booths • Car Washes
• Private Road Alarms • Factory Safety • Timing Auto Races • Axle Counting



High in reliability — Low in cost

The RBMA weatherproof Road Switch is supplied in a steel mounting channel which has flanges for fastening with studs, nails or cement. The metal mounting makes the RBMA suitable for asphalt surfaces as well as concrete roadways.

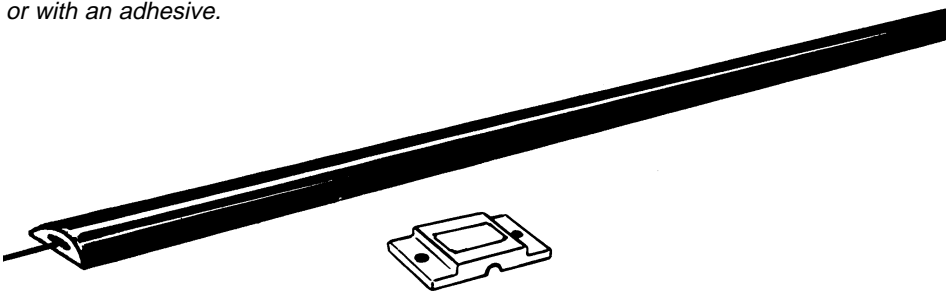
This heavy duty road switch operates as a normally open, momentary switch, making contact when pressed by any vehicle wheel. When properly installed this switch gives millions of cycles of performance. Can take the place of expensive "inductive loop" sensors.

For ground installations, 24 volts or less is recommended. Pressure sensitivity is 20 lbs. Cross section excluding flanges is two inches wide by 7/16" thin. Standard lengths: 2 ft., 3 ft., 5 ft., 8 ft., and 10 ft.

171-IS RIBBON SWITCH. This sealed ribbon switch contactor is available as a replaceable item that slips into the protective rubber sheath. (Specify length).

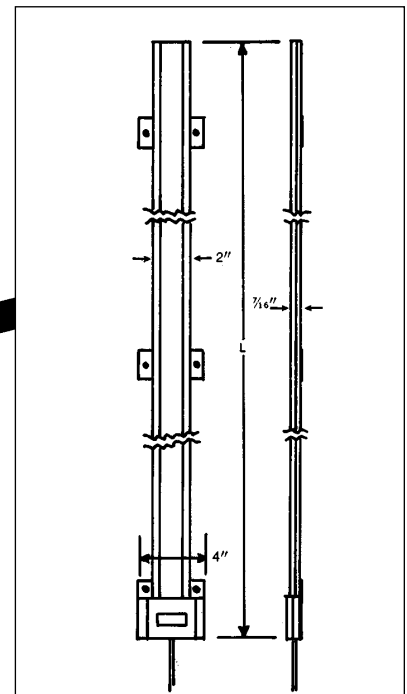
Type RB-S Road Switch

Type RB-S features the same design and functional versatility as the RBMA, except the steel mounting channel is omitted. May be attached to road surface mechanically or with an adhesive.



End Protector — C-178

Road switches should be ordered long enough and placed so that the traffic is kept off ends. If traffic cannot be kept off, use C-178 End Protectors at each end of switch.



RBMA - Stainless Steel Switch

Applications: • Car Washes • Vehicle Counting or Sensing • Axle Counting
• Toll Booth Counting • Vehicle Approach Signaling

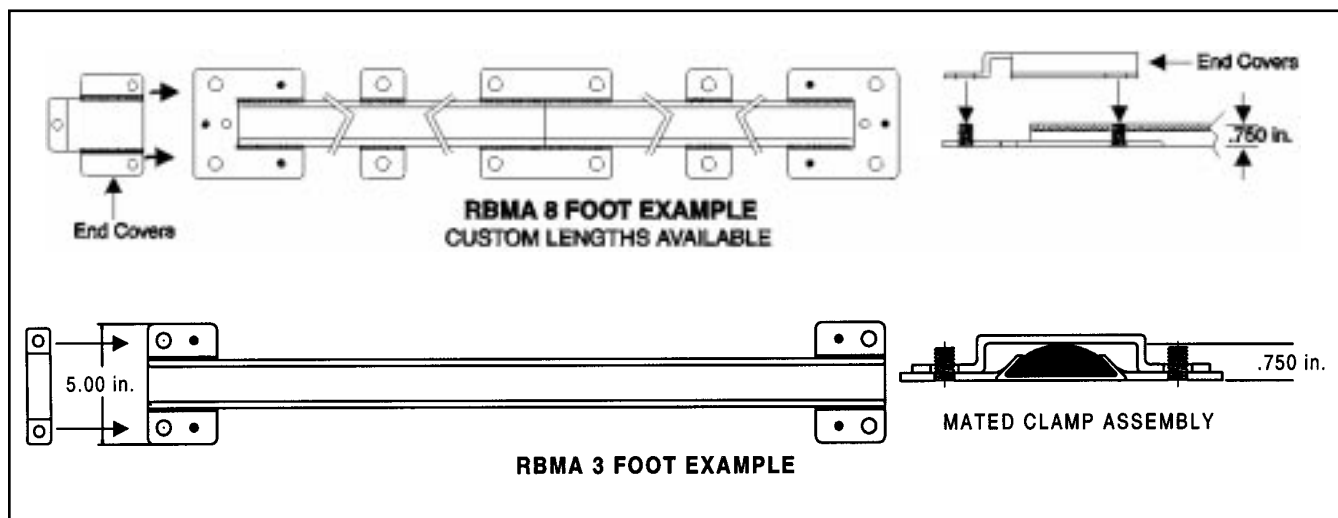
FEATURES & BENEFITS

- Replaceable Switch Assembly.
- Solid Core Two-Conductor Wire.
- Low Profile Sensor.
- Easy Access Bar Clamp.
- Grade 304 Stainless Steel.
- Fail-Safe Wiring Optional.
- Double Sealed Switch.

The **RBMA Stainless Steel Switch** is similar in design to the RBMA Vehicle Sensing Switch. The difference is all stainless steel construction. This new road switch was designed for extra heavy duty applications and is the result of changing needs and new innovative customer applications.

It comes with a stainless steel switch bar clamp for easy switch replacement and can be ordered with optional stainless steel full end covers.

Another option is galvanized mounting channel with switch bar clamp and welded studs.



Non - Corrosive Plastic Vehicle Switch

Low cost, low profile sensor. This version of the RBMA is very durable under wet conditions making it ideal for car wash applications. It is made of EPDM and C-TEK with a double sealed switch assembly and solid core two conductor wire.

