

Item # P8-4817 Model 48 Electromechanical Totalizer



Model 48 Electromechanical Totalizer

A compact, economical, 6 or 7 figure, non-reset, electromechanical counter designed for general purpose industrial and commercial counting applications. It is designed for a variety of mounting methods as required by the application. Commonly used for coin-operating equipment, photocopiers and vending machines.

Specifications

Model No.	48
Mounting	P Panel Mount
Display	7 Figures, white on black, 0.17 inch (4.3mm) high
Display Height	0.17 Inch
Display Height	4.3 mm
No. of Digits	7
Voltage	24 VDC
Power	2 watts
Reset Type	none
Speed	1000 counts/minute AC, (min. 30ms - on, 30ms - off); 1200 counts/minute DC, (min. 25ms - on, 25ms - off)
Operating Temperature	-15 to +140 °F
Operating Temperature	-26 to +60 °C
Approvals	UL Recognized, CSA Certified, CE Compliant
Termination	(2) No. 22 AWG 105°C wire leads, 12 inch (305mm) long.
Panel Cutout	1.72 x 1.05 Inch
Panel Cutout	43.7 x 26.7 mm
Mounting Hole Dia.	For No. 5 flat head screw Inch
Weight	3.5 oz
Weight	99 gm
Operating Life	Beyond 10 million counts
Stock Availability	No



Description

A compact, economical, 6 or 7 figure, non-reset, electromechanical counter designed for general purpose industrial and commercial counting applications. It is designed for a variety of mounting methods as required by the application. Commonly used for coin-operating equipment, photocopiers and vending machines.

Features

- 6 or 7 figure
- Compact
- Non-reset
- Variety of mounting options

Options

- Voltages
- Lead lengths
- 5 figure

Specifications

Figures: 6 or 7 figures, white on black, 0.17" [4.3mm] high
Reset: None
Speed: 1,000 counts/minute AC, (min. 30ms - on, 30ms - off)
 1,200 counts/minute DC, (min. 25ms - on, 25ms - off)
Power: AC: 24VAC ~ 4 watts
 115VAC ~ 3.5 watts
 230VAC ~ 5 watts
 DC: 12/24VDC ~ 2 watts

Mounting: Panel or base
Terminations: (2) #22 AWG 105°C wire leads, 12" [305mm] long
Operating Life: Beyond 10 million counts
Temp. Range: -15°F to +140°F [-26°C to +60°C]
Approvals: UL Recognized, CSA Certified, CE Compliant
Weight: 3.5 oz. [99g]

Models	Description	Models	Description
P2-4816	115VAC, 6 figures, P panel mount	D8-4817	24VDC, 7 figures, D base mount
P8-4816	24VDC, 6 figures, P panel mount	P2-4817	115VAC, 7 figures, P panel mount
R2-4816	115VAC, 6 figures, R panel mount	P8-4817	24VDC, 7 figures, P panel mount
SR2-4816	115VAC, 6 figures, SR panel mount	R8-4817	24VDC, 7 figures, R panel mount
SR8-4816	24VDC, 6 figures, SR panel mount	SR8-4817	24VDC, 7 figures, SR panel mount
V1-4816	230VAC, 6 figures, V base mount	V2-4817	115VAC, 7 figures, V base mount
V2-4816	115VAC, 6 figures, V base mount	V8-4817	24VDC, 7 figures, V base mount
V3-4816	24VAC, 6 figures, V base mount		
V8-4816	24VDC, 6 figures, V base mount		
V9-4816	12VDC, 6 figures, V base mount		

* Items in bold are normally in factory stock.

Applications

Control panels



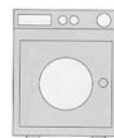
Gaming machines



Vending machines



Coin-operated equipment



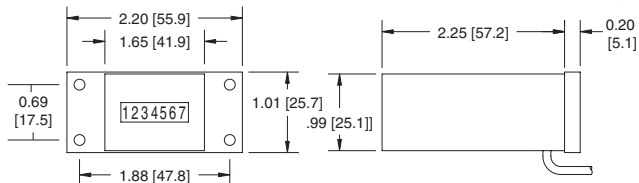
Photocopiers





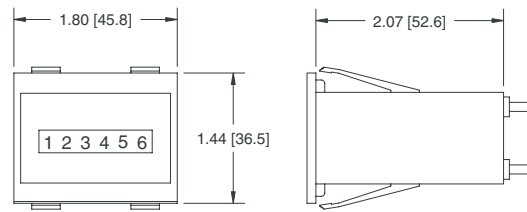
Dimensions

D - Mount



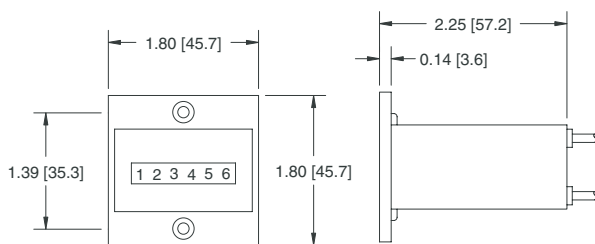
Mounting holes: 0.15" [3.8] Dia.

SR - Mount



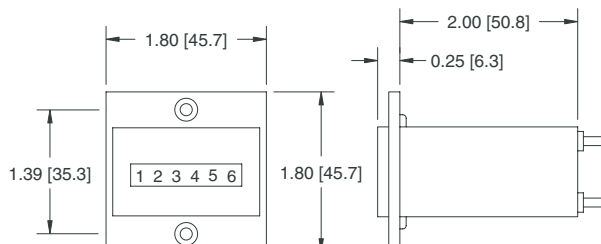
Panel cutout: 1.67" x 1.29" [42.4 x 32.8mm]
Recommended panel thickness: 0.04" to 0.08" [1.0 to 2.0mm]

P - Mount



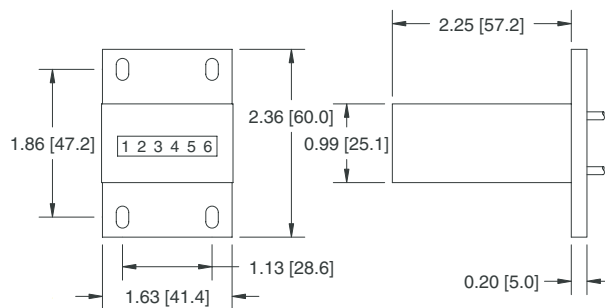
Mounting holes: For #5 flat head screw
Panel cutout: 1.72" x 1.05" [43.7 x 26.7mm]

R - Mount



Mounting holes: For #5 flat head screw
Panel cutout: 1.72" x 1.05" [43.7 x 26.7mm]

V - Mount



Mounting holes: 0.16" x 0.28" [4.1 x 7.1mm] slots