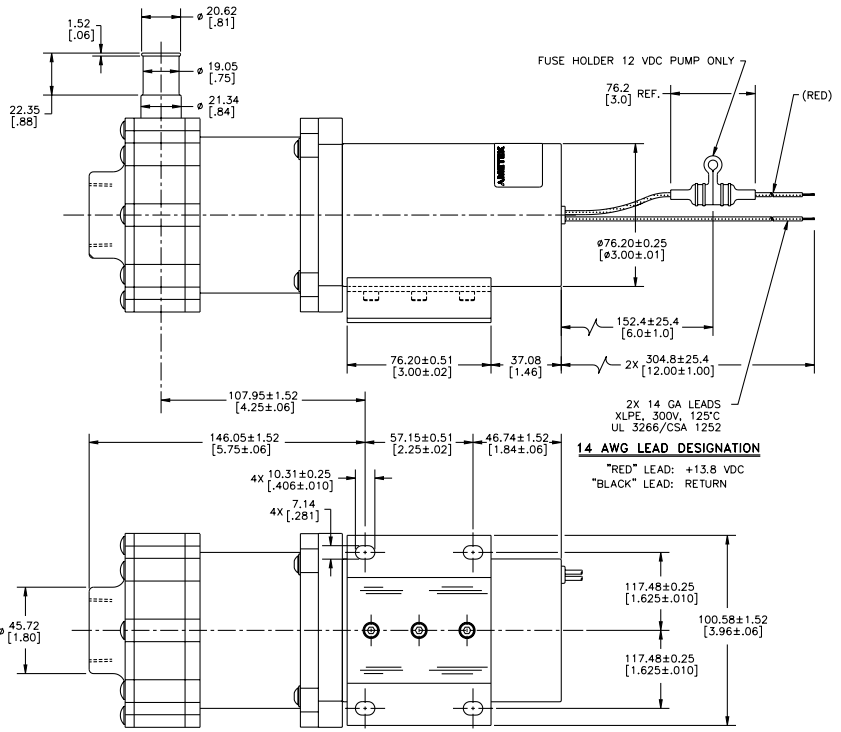
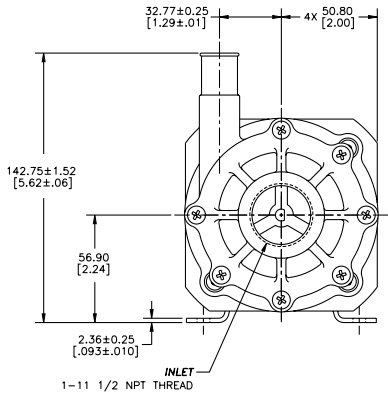


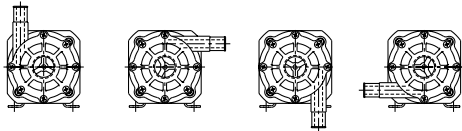
# Tech Bulletin

## Brushless DC Seal-Less Pump

12 Gallon



### BLAST DIRECTION DETAIL



- |               |              |              |              |
|---------------|--------------|--------------|--------------|
| 150084-10*    | 150084-20    | 150084-30    | 150084-40    |
| 150085-10*    | 150085-20    | 150085-30    | 150085-40    |
| (12:00 BLAST) | (3:00 BLAST) | (6:00 BLAST) | (9:00 BLAST) |

## Features

### Pump

- Seal-Less Design is leak proof, Pump is magnetically coupled to motor
- Motor is removable from pump without draining system
- Environmentally resistant to hot-water, salt, fog, shock & vibration

### Motor

- 12 VDC & 24 VDC Models Available
- Variable Speed Version Available
- ECDC (Electronically Commutated DC) Motor design provides for **maintenance free operation** by eliminating brush motor failures and brush maintenance.
- Rare-earth magnets provide high efficiency and low current draw
- "O" Ring sealed for harsh operating environment
- Heavy Duty Construction required for transit bus and construction equipment

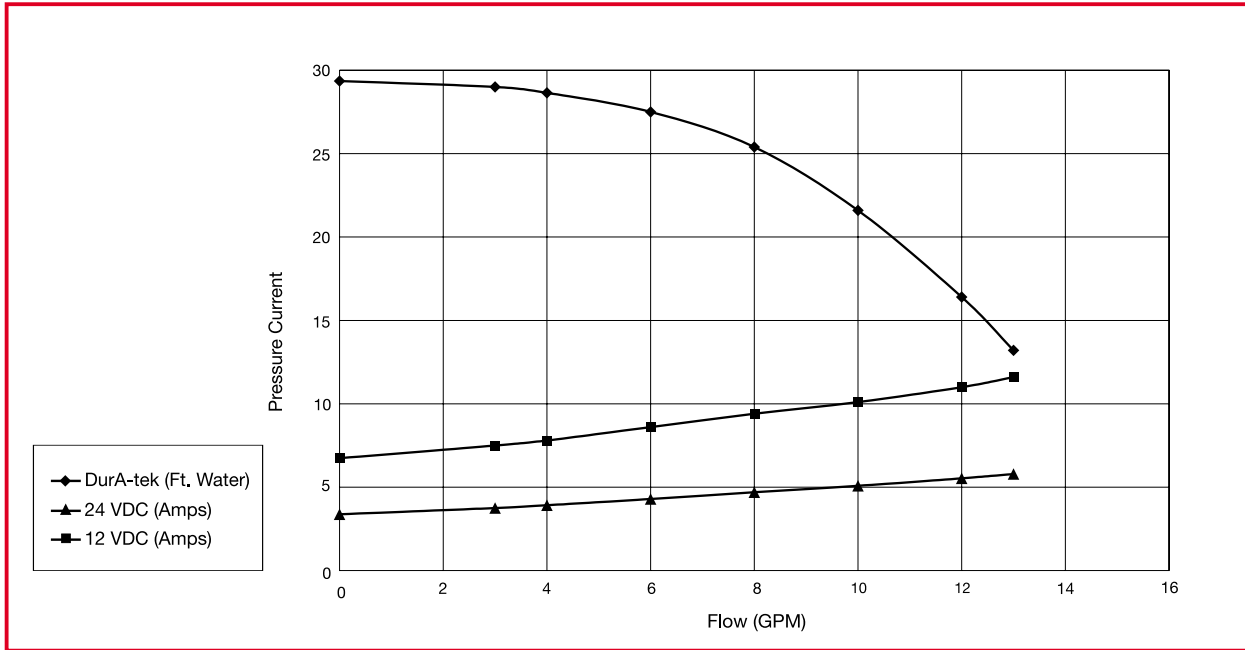
### NOTES:

- Motor design characteristics are based on an operating environment of 85°C.
- Nominal and maximum performance figures are based on a winding temperature of 105°C.
- This product is designed for medium duty harsh environment applications such as shuttle bus and other medium duty transit bus applications.
- This product is environmentally resistant to hot water spray, rain, humidity, salt, fog, shock and vibration associated with vehicle applications.
- The Seal-Less Pump is leak proof and features a magnetic coupling with no wet seal to wear or replace.
- The Brushless Motor is removable from the pump without draining the coolant system and has no brushes to be replaced. The motor is electronically commutated.

**Brushless DC Seal-Less Pump**

**12 Gallon**

PUMPS



This document is for informational purposes only and should not be considered as a binding description of the products or their performance in all applications. The performance data on this page depicts typical performance under controlled laboratory conditions. Actual performance will vary depending on the operating environment and application. AMETEK Rotron products are not designed for use with volatile, hazardous or corrosive gases. Blower housings are not sealed, slight air/gas leakage will occur. AMETEK Rotron products are not designed for and should not be used in medical life support applications. AMETEK reserves the right to revise its products without notification. The above characteristics represent standard products. For product designed to meet specific applications contact AMETEK Rotron Marketing and Sales.