

## 75 to 240W, 24V Output DIN Rail Mount Power Supplies

**RoHS**



- ◆ Low Cost
- ◆ 3 Year Warranty
- ◆ UL508 Listed, NEC NFPA70 Class 2<sup>(1)</sup> (/C2 Models)
- ◆ Convection Cooled
- ◆ Conforms to EN61000-3-2 (PFC)
- ◆ Conducted and Radiated EMI, Class B
- ◆ Input Transient Protection, IEC61000-4
- ◆ Semi F47 Compliant (DLP180 & 240 only)

ITEMS		MODELS	DLP75-24-1/E DLP75-24-1/C2EJ	DLP100-24-1/E DLP100-24-1/C2EJ	DLP120-24-1/E	DLP180-24-1/E	DLP240-24-1/E
Output Voltage	V		24	24	24	24	24
Output Current (/C2 models)	A		3.1 (2.5)	4.1 (3.7)	5.0	7.5	10
Output Power (/C2 models)	W		75 (60)	98.4 (88.8)	120	180	240
Output Voltage Adjustment	V		21.6 - 28 (fixed for /C2 models)				
Load Regulation	-		192mV				
Line Regulation	-		120mV				
Ripple/Noise (0-60°C)	mV		240				
AC Input Voltage & Frequency	-		85-132/170-265VAC, 47-63Hz Auto select			85-265VAC (47-63Hz) or 120-370VDC <sup>(2)</sup>	
Input Current 100/230VAC	A		1.7/0.8	2.3/1.2	2.4/1.3	2.3/1.0	3.0/1.3
	/C2		1.4/0.7	2.0/1.0		-	
Efficiency 100/230VAC	%		81/83	82/85	83/85	84/87	82/86
Power Factor	-		Meets EN61000-3-2 (DLP180, 240: >0.95)				
Inrush Current(Typ)100/230VAC	A		20/45				
Leakage Current	mA		Less than 0.75mA				
Hold-up Time 100/230VAC	ms		20/30 (Semi F47 Compliance, DLP 180 & 240 only)				
Overcurrent Protection	-		>105%,Fold Back	>105%, Constant Current			
	/C2		~2.6A	~3.75A			
Overvoltage Protection	-		30-35V, latching, cycle AC line to reset (26-30V DLP75-24-1/C2EJ)				
LED Indicators	-		Green LED = DC ok Red LED = overcurrent				
Operating Temperature (3)	-		Convection cooled, -10°C to 60°C, derate linearly to 60% load from 50 to 60°C				
Storage Temperature	-		-30°C~+85°C				
Humidity (Non-Condensing)	%RH		30-90% operating		10-95% non operating		
Withstand Voltage	-		Input - Ground 2kVAC, Input to Output 3kVAC, Output - Ground 500VAC				
Vibration	-		9.8m/s <sup>2</sup> (1.0G) at DIN rail; (10-55Hz: 9.8m/s <sup>2</sup> Constant, X,Y, Z each 1 hour)				
Shock	-		196m/s <sup>2</sup> (20G)				
Safety Agency Approvals	-		UL508, NEC Class 2 <sup>(1)</sup> (/C2 models), UL60950-1, CSA60950-1, EN60950-1, CE, EN50178 Cat III (Pri)				
Conducted EMI	-		FCC-B, EN55011/EN55022-B, VCCI-B; Meets IEC61000-4-1				
Radiated EMI	-		EN55011/EN55022-B, FCC-Class B, VCCI-B				
ESD	-		IEC61000-4-2 ±10kV (Air), ±5kV (Contact)				
Radiated RFI	-		IEC61000-4-3 80-1000MHz, 12V/m 80% AM 1kHz				
Fast Transient Burst	-		IEC61000-4-4 2.4kV 5kHz				
Lightning Surge	-		IEC61000-4-5 4.4kV, 1.2x50µs (Common Mode) 2.4kV 1.2x50µs (Normal)				
Conducted RFI	-		IEC61000-4-6 150kHz-80MHz, 12V, 80% AM 1kHz				
Magnetic Field	-		IEC61000-4-8 36A/m				
Voltage Dips	-		IEC61000-4-11 70% 10ms, 40% 100ms, 0% 5s				
Size	mm		50 x 97 x 110	60 x 97 x 110	60 x 97 x 110	80 x 97 x 110	120 x 97 x 110
Weight	g		470	540	540	780	1000
Warranty	-		3 Years				

(1) Evaluated to NEC NFPA70 Class 2 output per UL1310

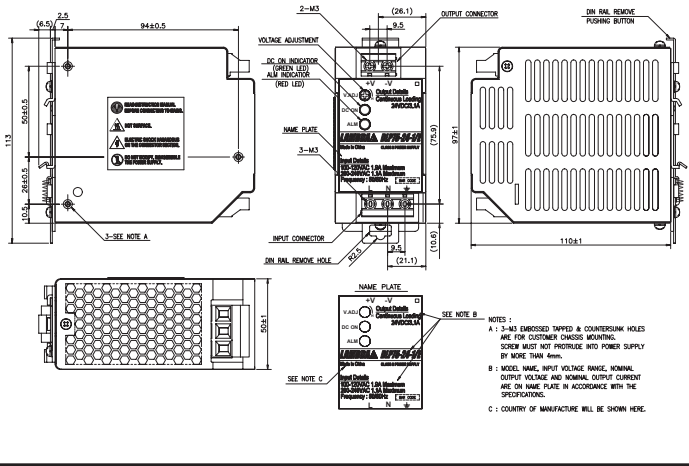
(2) DC input is not safety approved

(3) DLP240-24-1/E, 170-265VAC: -10°C~+70°C, derated linearly to 60% load from 50° to 70°C.

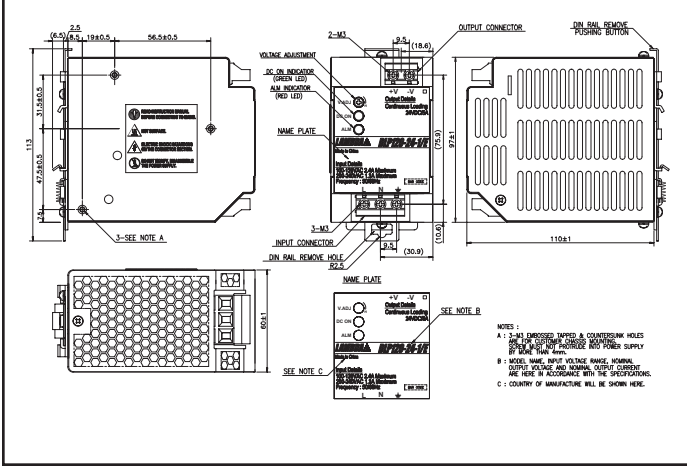
DLP75-24-1/C2EJ: -10°C~+70°C, derated linearly to 75% load from 50° to 60°C.

DLP100-24-1/C2EJ: -10°C~+70°C, derated linearly to 80% load from 50° to 60°C.

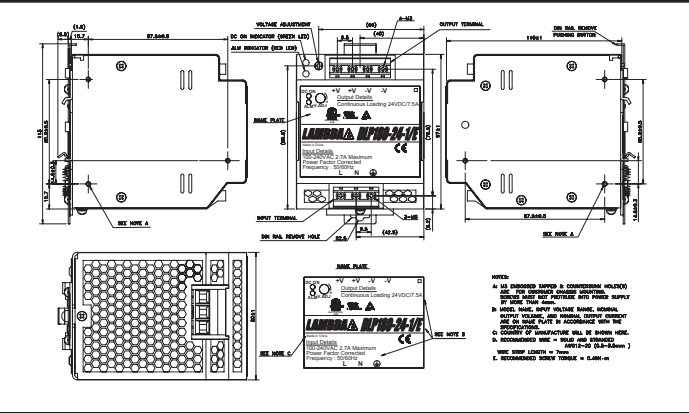
## DLP75 Outline



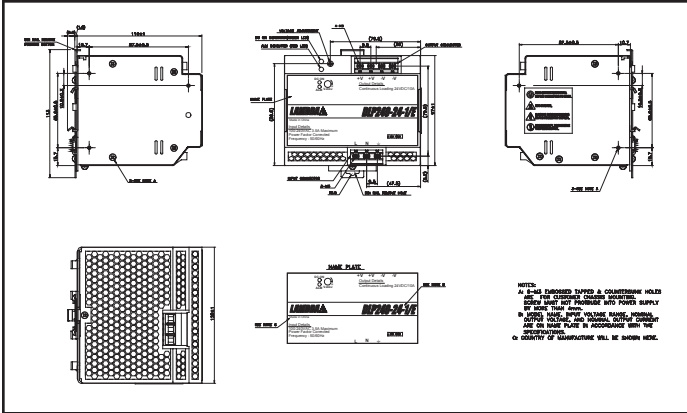
## DLP 100/120 Outline



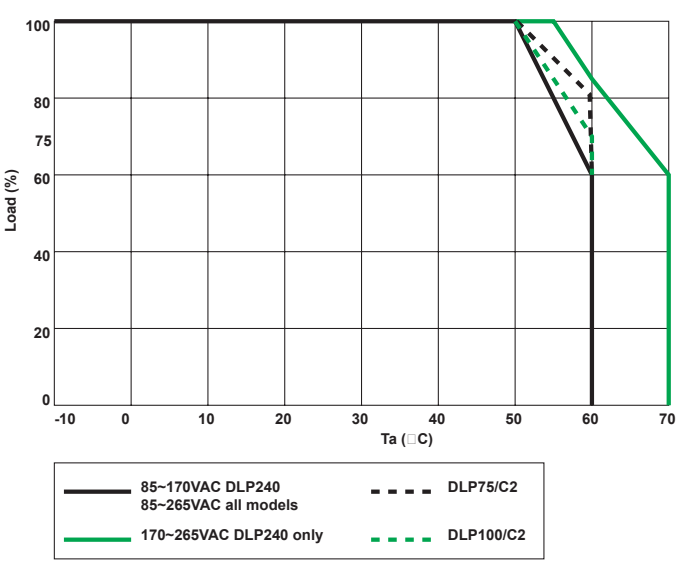
## DLP 180 Outline



## DLP 240 Outline



## Derating Curve



## Other Industrial Products

DPP/DSP 10W to 480W Single Output DIN Rail  
 HWS 15W to 1800W Single Output

**Snap-on Mounting:** snap onto DIN Rail TS35/7.5 or TS35/15. (no tools required)

For Additional Information, please visit [us.tdk-lambda.com/lp/products/dlp-series.htm](http://us.tdk-lambda.com/lp/products/dlp-series.htm)