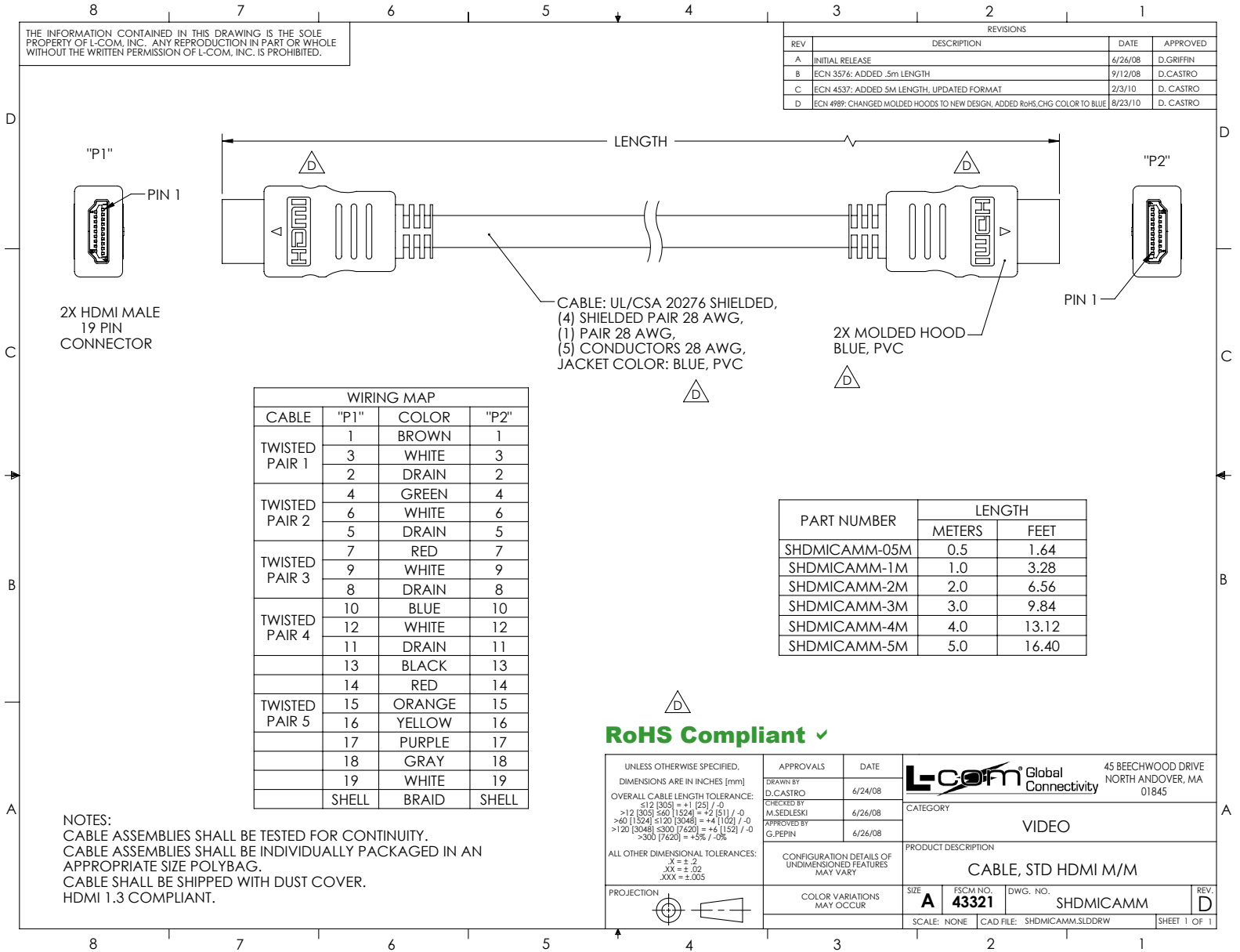


THE INFORMATION CONTAINED IN THIS DRAWING IS THE SOLE PROPERTY OF L-COM, INC. ANY REPRODUCTION IN PART OR WHOLE WITHOUT THE WRITTEN PERMISSION OF L-COM, INC. IS PROHIBITED.

REVISIONS			
REV	DESCRIPTION	DATE	APPROVED
A	INITIAL RELEASE	6/26/08	D.GRIFIN
B	ECN 3576: ADDED .5m LENGTH	9/12/08	D.CASTRO
C	ECN 4537: ADDED 5M LENGTH, UPDATED FORMAT	2/3/10	D. CASTRO
D	ECN 4989: CHANGED MOLDED HOODS TO NEW DESIGN, ADDED R6H5.CHG COLOR TO BLUE	8/23/10	D. CASTRO



WIRING MAP			
CABLE	"P1"	COLOR	"P2"
TWISTED PAIR 1	1	BROWN	1
	3	WHITE	3
	2	DRAIN	2
TWISTED PAIR 2	4	GREEN	4
	6	WHITE	6
	5	DRAIN	5
TWISTED PAIR 3	7	RED	7
	9	WHITE	9
	8	DRAIN	8
TWISTED PAIR 4	10	BLUE	10
	12	WHITE	12
	11	DRAIN	11
	13	BLACK	13
	14	RED	14
TWISTED PAIR 5	15	ORANGE	15
	16	YELLOW	16
	17	PURPLE	17
	18	GRAY	18
	19	WHITE	19
	SHELL	BRAID	SHELL

PART NUMBER	LENGTH	
	METERS	FEET
SHDMICAMM-05M	0.5	1.64
SHDMICAMM-1M	1.0	3.28
SHDMICAMM-2M	2.0	6.56
SHDMICAMM-3M	3.0	9.84
SHDMICAMM-4M	4.0	13.12
SHDMICAMM-5M	5.0	16.40

RoHS Compliant ✓

NOTES:
 CABLE ASSEMBLIES SHALL BE TESTED FOR CONTINUITY.
 CABLE ASSEMBLIES SHALL BE INDIVIDUALLY PACKAGED IN AN APPROPRIATE SIZE POLYBAG.
 CABLE SHALL BE SHIPPED WITH DUST COVER.
 HDMI 1.3 COMPLIANT.

UNLESS OTHERWISE SPECIFIED, DIMENSIONS ARE IN INCHES [mm]	APPROVALS	DATE	 45 BEECHWOOD DRIVE NORTH ANDOVER, MA 01845
OVERALL CABLE LENGTH TOLERANCE: ≤ 12 [305] = +1 [25] / -0 > 12 [305] ≤ 60 [1524] = +2 [51] / -0 > 60 [1524] ≤ 120 [3048] = +4 [102] / -0 > 120 [3048] ≤ 300 [7620] = +6 [152] / -0 > 300 [7620] = +5% / -0%	DRAWN BY D.CASTRO	6/24/08	
ALL OTHER DIMENSIONAL TOLERANCES: $X = \pm .2$ $XX = \pm .02$ $XXX = \pm .005$	CHECKED BY M.SEDLESKI	6/26/08	CATEGORY VIDEO
PROJECTION 	APPROVED BY G.PEPIN	6/26/08	PRODUCT DESCRIPTION CABLE, STD HDMI M/M
	CONFIGURATION DETAILS OF UNDIMENSIONED FEATURES MAY VARY		SIZE A
	COLOR VARIATIONS MAY OCCUR		FSCM NO. 43321
			DWG. NO. SHDMICAMM
			REV. D
			SCALE: NONE
			CAD FILE: SHDMICAMM.SLDDRW
			SHEET 1 OF 1