



## HBL560R9W -- Watertight IEC Pin and Sleeve Receptacle



Every Hubbell non-metallic Pin and Sleeve product is designed to meet the International Standard IEC 60309-1 and IEC 60309-2. This device standard calls out singly rated, non-interchangeable configuration for every voltage and type of service throughout the world.

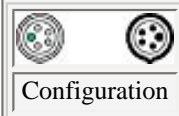
### Product Specifications

<b>Product Type</b>	 <p><b>IEC Devices</b></p>
<b>Device Standard</b>	IEC
<b>IEC Product Type</b>	Watertight
<b>Service Style</b>	Standard
<b>Device</b>	Receptacle
<b>Amperage</b>	60A
<b>Voltage</b>	3 Phase Y 120/208V
<b>Poles and Wires</b>	4 Pole, 5 Wire
<b>Color</b>	 <p><b>Blue</b></p>

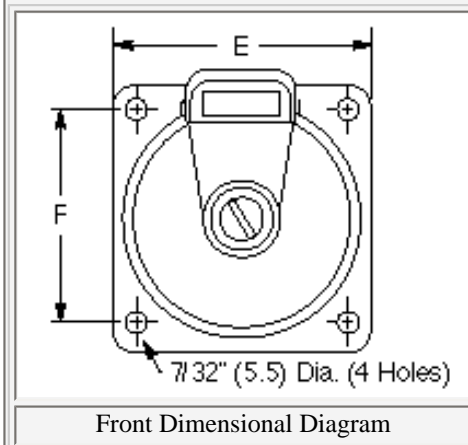
<b>Replacement Interior Number</b>	IN560EF
<b>Hinge Spring</b>	Stainless Steel (300 series)
<b>Housing</b>	Zytel 101 Nylon
<b>Mounting Flange</b>	Zytel 101 Nylon
<b>Mounting Screws</b>	Stainless Steel (300 Series)
<b>Contact Carrier</b>	High-Impact Thermoset
<b>Retainer</b>	High-Impact Thermoset
<b>Terminal Screws</b>	Stainless Steel (300 series)
<b>Assembly Screws</b>	Stainless Steel (300 series)
<b>Gaskets</b>	Neoprene
<b>Cover Arm</b>	Rynite SST35
<b>Arm Spring</b>	Stainless Steel (17-1 Type)
<b>Cover</b>	Rynite SST35
<b>Cover Screw/Rivet</b>	Nickel Plated Brass
<b>Rotating Sealing Disc</b>	Polycarbonate
<b>Ground/Phase Sleeve</b>	Brass
<b>Pin/Sleeve Spring</b>	Beryllium Copper multi-contact insert with silver plating.
<b>Certification</b>	UL Listed, CSA Certified
<b>Dielectric Withstand Voltage</b>	Withstands 3,000V AC
<b>Max Working Voltage</b>	600V AC RMS
<b>Current Interrupting</b>	Certified for current interrupting at full rated current.
<b>Short Circuit Withstand</b>	Suitable for use on a circuit capable of delivering not more than 10,000 RMS symmetrical amperes at the voltage rating of the receptacle.
<b>Temperature Rise</b>	Max 30° C temperature rise at full rated current after 50 cycles of overload at 150% of rated current at a power factor of 75%.
<b>Endurance</b>	Mechanical: 10,000 cycles, Electrical: 6,000 cycles.
<b>Impact Resistance</b>	In accordance with UL746C
<b>Terminal Identification</b>	Terminals identified in accordance with North American and International conventions.
<b>Product Identification</b>	Identification and ratings are a part of the external label and molded into the receptacle mount.
<b>Moisture Resistance</b>	Watertight per IEC 60309-1
<b>Ingress Protection</b>	IP67 Suitability
<b>Flammability</b>	UL94-5VA and V-0 classification.
<b>Operating Temperatures</b>	Maximum Continuous: 75° C; Minimum Continuous: -40° C w/o impact.
<b>UV Resistance</b>	All materials are UV Stabilized.

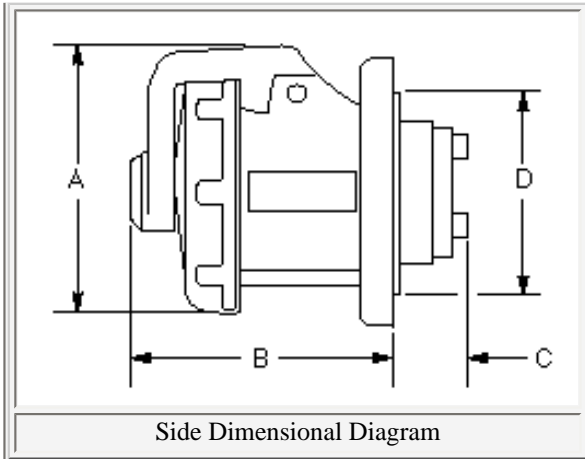
<

<b>Industry</b>	<b>Watertight</b>
Agriculture	Outdoor for fans, heaters, pumps, etc.
Chemical Processing	Where subject to water, corrosion and rough use.
<b>Certifications</b>	UL Listed, CSA Certified.
<b>Catalog Page</b>	E-5
<b>M Drawings</b>	<a href="#">Click here for M-Drawing</a>
<b>Brochures</b>	<a href="#">Click here for product brochure</a>
<b>Hubbellnet</b>	<a href="#">Click here for Hubbellnet</a>
<b>Catalog Section</b>	<a href="#">Click here for Section-E</a>
<b>UPC Number</b>	78358540573
<b>Weight in LBs</b>	2.55



### Watertight Application Guide





Side Dimensional Diagram

**Hubbell Incorporated (Delaware)**  
185 Plains Road  
Milford, CT 06460-2420  
Ph: (203) 882-4800  
Fax: (800) 255-1031

