

Solid State Switch Tie-rod Mounting Style D-F59/D-F5P/D-J59/D-J51



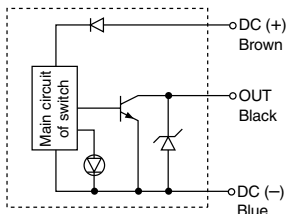
For details about certified products conforming to international standards, visit us at www.smcworld.com.

Grommet

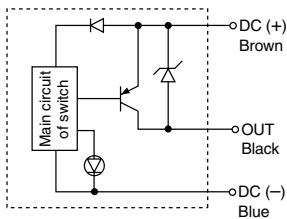


Auto Switch Internal Circuit

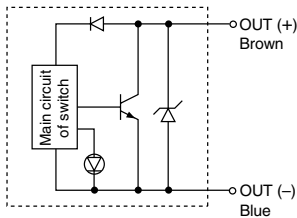
D-F59



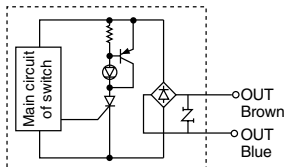
D-F5P



D-J59



D-J51



Auto Switch Specifications

PLC: Abbreviation of Programmable Logic Controller

D-F5□, D-J5□				
Auto switch model	D-F59	D-F5P	D-J59	D-J51
Wiring type	3-wire		2-wire	
Output type	NPN	PNP	—	—
Applicable load	IC circuit, Relay, PLC		24 VDC Relay, PLC	AC Relay, PLC
Power supply voltage	5, 12, 24 VDC (4.5 to 28 VDC)		—	—
Current consumption	10 mA or less		—	—
Load voltage	28 VDC or less	—	24 VDC (10 to 28 VDC)	80 to 260 VAC
Load current	40 mA or less	80 mA or less	5 to 40 mA	5 to 80 mA
Internal voltage drop	1.5 V or less (0.8 V or less at 10 mA load current)	0.8 V or less	4 V or less	14 V or less
Leakage current	100 μA or less at 24 VDC		0.8 mA or less at 24 VDC	1 mA or less at 100 VDC 1.5 mA or less at 200 VDC
Indicator light	Red LED lights when ON.			

- Lead wire — Oil resistant vinyl heavy-duty cord, $\phi 4$, 0.3 mm², 3 cores (Brown, Black, Blue), 2 cores (Brown, Blue), 0.5 m

Note 1) Regarding the common specifications of the solid state switches, refer to page 6-16-7.

Note 2) Regarding the lead wire length, refer to page 6-16-7.

Weight

Auto switch model		D-F59	D-F5P	D-J59	D-J51
Lead wire length (m)	0.5	23	23	21	21
	3	81	81	71	71
	5	127	127	111	111

(g)

Dimensions

