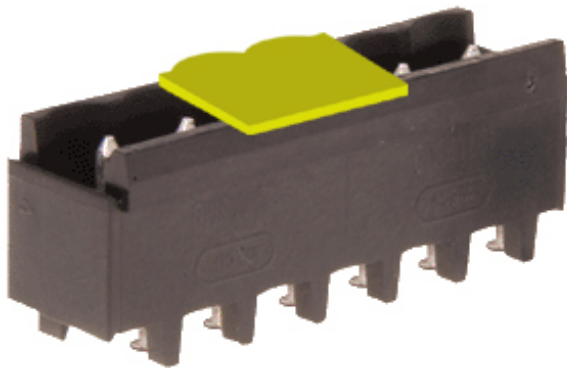


TYPE 120-M-221-SMD

5 mm spacing - 2 to 24 poles



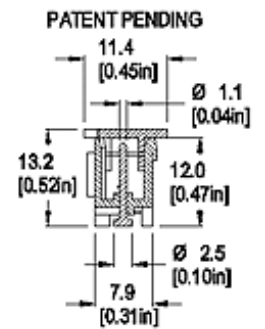
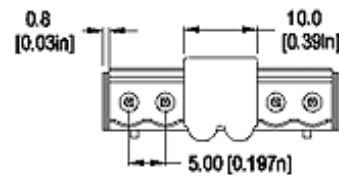
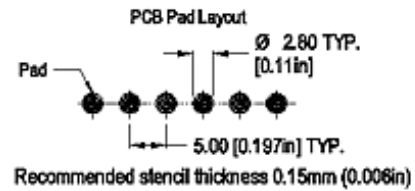
Series	Download PDF	Download DXF	Can plug with	How to order	Color specifications	Print
------------------------	------------------------------	------------------------------	-------------------------------	------------------------------	--------------------------------------	-----------------------



120-M-221-SMD



One possible variation of assembly



Dimensions: mm (in.)

Approval Information

Rating	Current(A)	Voltage(V)	Application group	AWG
UL	15	300	B	
CSA	15	300	B	

* UL and CSA ratings pending.

International Approvals:



International Approvals Notes:
ROHS WEEE Pb free compliant.

Description

Material

Patent Pending.

Moving SMT pin confers total co-planar adaptability to PCB surface and eliminates CTE (Coefficient of Thermal Expansion).

Typical solder-ability retention force: 2 lbs / SMT pin (f.ex.: a 6 poles header has a retention force of 12 lbs per connector).

Thermo resistant materials withstand re-flow temperatures well without deforming or melting.

- Plug-In Direction Perpendicular to PCB and Wire Entrance Parallel to PCB when plugged with **120-D-111, 120-D-121**
- Plug-In Direction and Wire Entrance Perpendicular to PCB when plugged with **120-A-111**
- Surface Mount adjustable to PCB planar variations

Technical Data

Center to Center Spacing: 5 mm (0.197 in.)

Application

You can convert on your board 5 mm connector receptacle made for wave solder or through hole re-flow to 120-M-221-SMD genuine surface mount connector. You can increase PCB packaging and component density by using both sides of the PCB, reduce and eliminate set-up costs, simplify and streamline your processes. Keyed pick cap is designed to ensure pick and place capability of the header. 56 mm width Tape in 13 " / 330 mm Dia Reel (300 pieces / Reel) is available for 2,3,4,5,6 poles. Other tape and reel configurations can be manufactured upon customer request. Connectors of more than 10 poles can be shipped in trays upon customer request.

[Top of page](#)

Molding: Polyamide 4.6, 30% GF (glass fiber reinforced), self extinguishing to UL 94, V-0, color black

Temperature limits:

Short Time: 260C (500F)

Continuous: RTI 105C (221F)

Low Limit: -40C (-40F)

Comparative Tracking Index: CTI > 250

Oxygen Index Rating: 37%

Solder Pin: 1.1 mm (0.043 in.), tin plated copper alloy

Average weight: 0.45 gram per pole and 0.31 gram for the removable pick cap,

How to order

Item 120-M-221-SMD

Options

- Consecutive Numbering (White, hot stamped numbers)
- Special Marking (please provide sketch)
- Gold Plating (5 micro inches)
- Gold Plating (30 micro inches)
- Silver Plating (30 micro inches)
- Tape and Reel Assembly
- Removable Pick Cap

Note: Plated component: solder pin

Ordering Note: See download PDF for complete tape and reel assembly specifications

120-M-221-SMD/

POLES:
02 to 24

Request sample

Request quote

Place order

Quantity

[Add to shopping cart](#)

