

Free eNewsletter

Enter your E-mail



Shop By Type

Cable Assemblies
Adapters
Connectors
Rack Panels
Bulk Cable
Tools
Switch Boxes
Network Cards
Hubs & Switches
Converters & Transceivers
KVM Switches
Antennas

Overstock/Sale Items
Top 10 Products

Shop By Category

IEEE-488 GPIB
Coaxial
Monitor, Video
Fiber Optic
D-Subminiature
Modular
USB, DIN, Firewire, SCSI, and Others
Wireless Infrastructure
Weatherproof Enclosures
Networking and Other Equipment

Product Wizards

Cable Assemblies
Adapters
Connectors
Rack Panels
Tools
Switch Boxes
Network Cards
Hubs or Switches
Ethernet Converters
KVM Switches

Technical Resources

FAQs
Connector Chart
Glossary
Tutorials
Tips and Videos
White Papers
Catalog Downloads
eNewsletter Archive

You Are Here: [Home](#) > [Fiber Optic](#) > [Adapters, Couplers](#) > [FOA-003](#) > **FOA-003A**

Fiber Coupler, FC / FC (Square Mounting), Ceramic Alignment Sleeve

These L-com simplex metal FC couplers are designed for mounting in standard round cut out style panels. This series features either bronze or ceramic alignment sleeves to meet your specific design requirements. Additionally, these couplers can be used with PC or UPC style fiber connectors. Contact us today for large project volume discounts.



Features for this Fiber Optic product

- Used to connect either PC or UPC polished FC Fiber cables
- Quality metal construction ensures long life and durability
- Dust caps protect against debris and contamination
- Ceramic alignment sleeve supports both Multimode and Singlemode applications
- Order online today!

Details for this Fiber Optic product

L-com Item #	FOA-003A
Manufacturer	L-com
ASIN # (More)	B000AAL98M
UPC # (More)	822335023109
RoHS Status	RoHS Compliant (More)
Alignment Sleeve	Ceramic

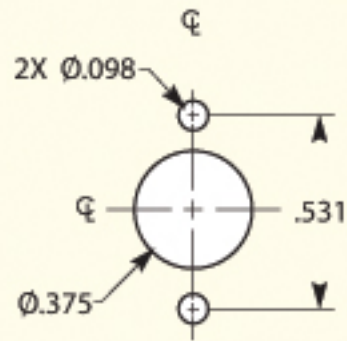
[Diagram](#)

[Catalog Page](#)

[2D Drawing \(.pdf\)](#)

[3D CAD Model \(.step\)](#)

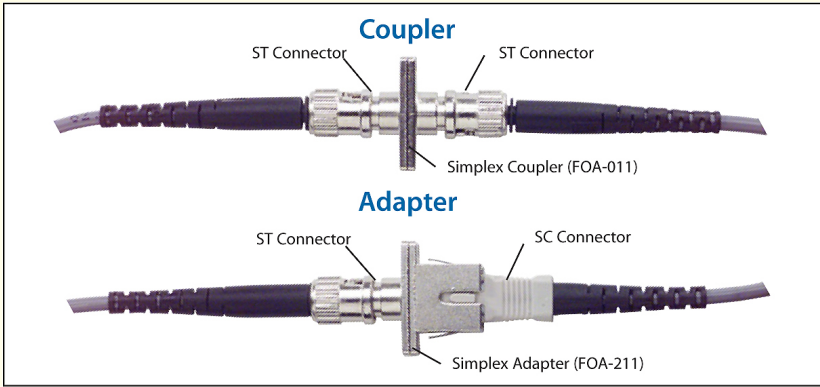
ADAPTOR MOUNTING DIAGRAM



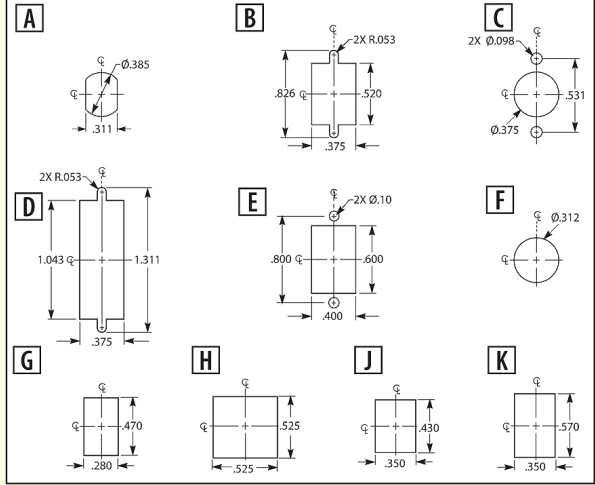
Dimensions are in inches.

Fiber Optic Couplers and Adapters

These devices are used to join together individual connectorized fiber assemblies. They are often used in a patch panel and are mounted on sub-panels. If the two connectorized fiber assemblies to be connected have the same style fiber connectors (ST to ST, SC to SC, etc.) then the connecting device is called a coupler. If the two connectorized fiber assemblies to be connected have different style connectors then the connecting device is called an adapter.

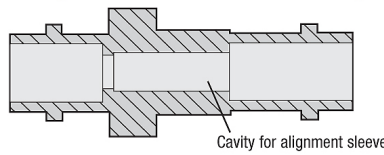


Common Adapter Mounting Diagrams

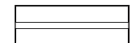


The alignment sleeve is the most critical component of a fiber optic adapter. Bronze sleeves are more durable but the precision is not as good as ceramic. Ceramic ferrules offer a more precise alignment, but they are somewhat less durable. Bronze alignment sleeves are commonly used in multimode applications where precision alignment is not as critical.

Cutaway Side View of ST-ST Coupler



CERAMIC Alignment Sleeve

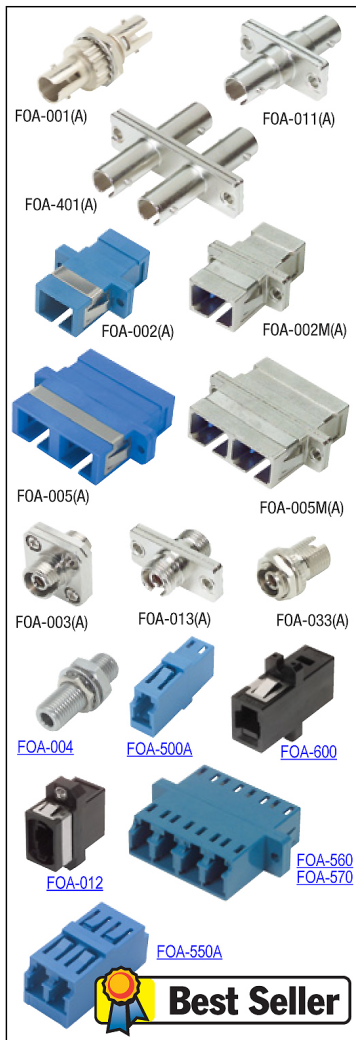


- Better alignment
- More expensive

BRONZE Alignment Sleeve



- Better durability
- Less expensive



Item #	Description	Body	Sleeve	Mtg. Code	1-9	10-24	25-99	100-249	250-499
--------	-------------	------	--------	-----------	-----	-------	-------	---------	---------

Fiber Optic Simplex and Duplex Couplers

These fiber optic couplers are for the most part available in both Simplex (single connection) and Duplex (two connections) styles. Most are available with both plastic and metal bodies and with bronze or ceramic alignment sleeves. Suitable for both PC and UPC polish fibers.

RoHS Compliant ST to ST Simplex Fiber Optic Couplers

FOA-001	Fiber Coupler	Metal	Bronze	A					
FOA-001A	Fiber Coupler	Metal	Ceramic	A					
FOA-011	Fiber Coupler	Metal	Bronze	B					
FOA-011A	Fiber Coupler	Metal	Ceramic	B					

RoHS Compliant ST to ST Duplex Fiber Optic Couplers

FOA-401	Fiber Coupler	Metal	Bronze	D					
FOA-401A	Fiber Coupler	Metal	Ceramic	D					

RoHS Compliant SC to SC Simplex Fiber Optic Couplers

FOA-002	Fiber Coupler	Plastic	Bronze	B					
FOA-002A	Fiber Coupler	Plastic	Ceramic	B					
FOA-002M	Fiber Coupler	Metal	Bronze	B					
FOA-002MA	Fiber Coupler	Metal	Ceramic	B					

RoHS Compliant SC to SC Duplex Fiber Optic Couplers

FOA-005	Fiber Coupler	Plastic	Bronze	D					
FOA-005A	Fiber Coupler	Plastic	Ceramic	D					
FOA-005M	Fiber Coupler	Metal	Bronze	D					
FOA-005MA	Fiber Coupler	Metal	Ceramic	D					

RoHS Compliant FC to FC Simplex Fiber Optic Couplers

FOA-003	Fiber Coupler	Metal	Bronze	C					
FOA-003A	Fiber Coupler	Metal	Ceramic	C					
FOA-013	Fiber Coupler	Metal	Bronze	B					
FOA-013A	Fiber Coupler	Metal	Ceramic	B					
FOA-033	Fiber Coupler	Metal	Bronze	A					
FOA-033A	Fiber Coupler	Metal	Ceramic	A					

RoHS Compliant SMA to SMA Simplex Fiber Optic Coupler

FOA-004	Fiber Coupler	Metal	None	F					
---------	---------------	-------	------	---	--	--	--	--	--

RoHS Compliant LC to LC Simplex / Duplex Fiber Optic Coupler

FOA-500A	Simplex Fiber Coupler	Plastic	Ceramic	G					
FOA-550A	Duplex Fiber Coupler	Plastic	Ceramic	H					

RoHS Compliant LC to LC Quad Fiber Optic Couplers

FOA-560	Quad Fiber Coupler	Plastic	Bronze	D					
FOA-570	Quad Fiber Coupler	Plastic	Ceramic	D					

RoHS Compliant MT-RJ to MT-RJ Fiber Optic Coupler

Use of this coupler requires one of the two mating MT-RJ connectors to contain alignment pins.

FOA-600	Fiber Coupler	Plastic	None	B					
---------	---------------	---------	------	---	--	--	--	--	--

RoHS Compliant MPO to MPO Fiber Optic Coupler

FOA-012	Fiber Coupler	Plastic	None	E					
---------	---------------	---------	------	---	--	--	--	--	--

What is the difference between a fiber optic coupler and adapter?

Although the terms are sometimes interchanged, a coupler typically connects like connectors (i.e. SC to SC), while adapters connect different connectors (i.e. SC to FC).

Shop at **L-com.com** or call **1-800-343-1455**

E-mail: sales@L-com.com Fax: 978-689-9484