

Low-cost Global Power Supply with CE Marking

- Safety standards:
UL: UL508 (Class 2), No.60950-1,
cUL: CSA C22.2 No. 14 (Class 2), cUR: 60950-1,
EN60950-1 (= VDE0805 Teil 1), EN50178 (= VDE0160)
- EMC: Conforms to EN61204-3 Class A
- Mounting bracket available for standard models
Front-mounting bracket type
DIN Rail mounting type (except 300 W and 600 W)
- RoHS-compliant



Model Number Structure

■ Model Number Legend

Note: Not all combinations are possible. Refer to *List of Models in Ordering Information* on page 2 and 3.

S82J -

1 2 3 4

1. Power Ratings

010: 10 W
025: 25 W
050: 50 W
100: 100 W
150: 150 W
300: 300 W
600: 600 W

2. Output Voltage

05: 5 V
12: 12 V
15: 15 V
24: 24 V

3. Configuration

10-/25-/50-/100-/150-W models
A: Open-frame type, front terminals
D: Covered type, front terminals

Mounting bracket
None: With mounting bracket
N: Without mounting bracket

4. Mounting Bracket

None: Front-mounting bracket type
D: DIN Rail mounting bracket type

Ordering Information

■ List of Models

Note: For details on normal stock models, contact your nearest OMRON representative.

Front-mounting Bracket Models

Configuration	Input Voltage	Power ratings	Output voltage	Output current	Front-mounting bracket models (Front terminals)	
Open-frame type	100 to 240 VAC (free)	10 W	5 V	2 A	S82J-01005A	
			12 V	1 A	S82J-01012A	
			15 V	0.7 A	S82J-01015A	
			24 V	0.5 A	S82J-01024A	
		25 W	5 V	5 A	S82J-02505A	
			12 V	2.1 A	S82J-02512A	
			15 V	1.7 A	S82J-02515A	
			24 V	1.1 A	S82J-02524A	
		50 W	5 V	10 A	S82J-05005A	
			12 V	4.2 A	S82J-05012A	
			24 V	2.1 A	S82J-05024A	
			100 or 200 VAC (selected automatically)	5 V	20 A	S82J-10005A
	12 V	8.5 A		S82J-10012A		
	15 V	7 A		S82J-10015A		
	100 to 240 VAC (free)		24 V	4.5 A	S82J-10024A	
	100 or 200 VAC (selected automatically)	150 W	24 V	6.5 A	S82J-15024A	
Covered type	100 to 240 VAC (free)	10 W	5 V	2 A	S82J-01005D	
			12 V	1 A	S82J-01012D	
			15 V	0.7 A	S82J-01015D	
			24 V	0.5 A	S82J-01024D	
		25 W	5 V	5 A	S82J-02505D	
			12 V	2.1 A	S82J-02512D	
			15 V	1.7 A	S82J-02515D	
			24 V	1.1 A	S82J-02524D	
		50 W	5 V	10 A	S82J-05005D	
			12 V	4.2 A	S82J-05012D	
			24 V	2.1 A	S82J-05024D	
			100 or 200 VAC (selected automatically)	5 V	20 A	S82J-10005D
		12 V		8.5 A	S82J-10012D	
		15 V		7 A	S82J-10015D	
		100 to 240 VAC (free)		24 V	4.5 A	S82J-10024D
		100 or 200 VAC (selected automatically)	150 W	24 V	6.5 A	S82J-15024D
	100 or 200 VAC (selectable)	300 W	24 V	14 A	S82J-30024	
					S82J-30024N	
		600 W	24 V	27 A	S82J-60024	
					S82J-60024N	

Specifications

■ Ratings/Characteristics

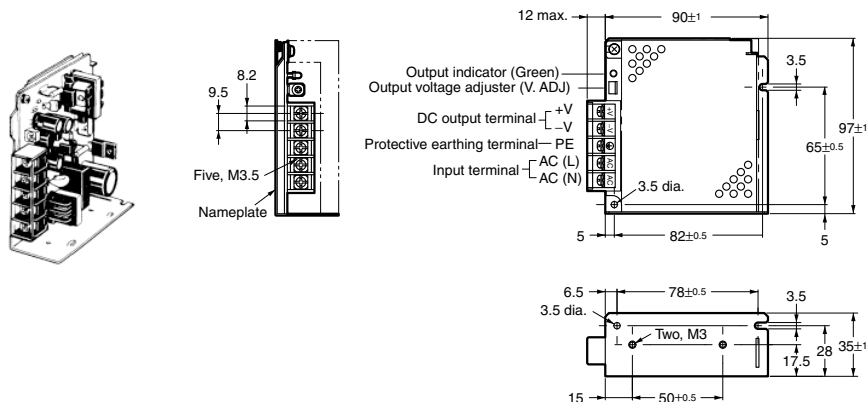
Power ratings (See note 1.)		100 to 240 V (Free)				100/200 (Selected automatically)		100/200 (Selected)			
		10 W	25 W	50 W	100 W (24 V)	100 W (5 V, 12 V, 15 V)	150 W	300 W	600 W		
Efficiency (typical)		67% min. (Varies depending on specifications)				83% min.		75% min. 82% min.			
Input	Voltage (See note 2.)	100 to 240 VAC (85 to 264 VAC) 110 to 170 VDC (10-W and 25-W models only) (See note 11.)				100 VAC (85 to 132 VAC) 200 VAC (170 to 264 VAC) (selected automatically)		100 VAC (85 to 132 VAC) 200 VAC (170 to 253 VAC) (selectable)			
	Frequency (See note 2.)	50/60 Hz (47 to 450 Hz)									
	Current (See note 3.)	100-V input	0.35 A max.	0.8 max.	1.4 A max.	2.5 A max.	2.5 A max.	3.5 A max.	8 A max.	14 A max.	
		200-V input	0.3 A max.	0.6 A max.	0.8 A max.	1.5 A max.	1.4 A max.	2.1 A max.	4 A max.	7 A max.	
	Leakage current (See note 3.)	100-V input	0.5 mA max.								
		200-V input	1 mA max.								
	Inrush current (See note 3.)	100-V input	25 A max. (for a cold start at 25°)							30 A max. (for a cold start at 25°)	
200-V input		50 A max. (for a cold start at 25°)							60 A max. (for a cold start at 25°)		
Noise filter	Yes										
Output (See note 4.)	Voltage Adjustment Range (See note 5.)	±10% (with V. ADJ)									
	Ripple (See note 3.)	2% (p-p) max.									
	Input variation influence	0.4% max.									
	Load variation influence	0.8% max. (10% to 100% load, rated input voltage)									
	Temperature variation influence	0.05%/°C max. (at rated input and output)									
	Startup time	500 ms max. (up to 90% of output voltage at rated input and output)							300 ms max. (up to 90% of output voltage at rated input and output)		
	Hold time (See note 3.)	20 ms min.									
Additional functions	Overload protection (See note 6.)	105% to 160% of rated load current, voltage/current drop, intermittent operation (10-W and 25-W models) gradual current increase/ voltage drop, intermittent operation (50-W, 100-W (24 V) models), automatic reset						105% of rated load current, Inverted L voltage drop, automatic reset (For the 600-W model, the circuit will be shut OFF when the overload exceeds 5 s.)			
	Overvoltage protection	No			Yes (See note 7.)	Yes (5-V output only) (See note 7.)	No		Yes (See note 8.)		
	Overheat protection	No								Yes (See note 8.)	
	Parallel operation	No							Yes (up to 5 units)		
	Protection-ON alarm indicator	No							Yes (color: red)		
Other	Ambient operating temperature	Refer to the derating curve in <i>Engineering Data</i> . (with no icing or condensation)									
	Storage temperature	-25 to 65°C (with no icing or condensation)									
	Ambient operating humidity	25% to 85% (Storage humidity: 25% to 90%)									
	Dielectric strength	3.0 k VAC for 1 min. (between all inputs and all outputs)									
		2.2 k VAC for 1 min. (between all inputs and all outputs/PE terminals)									
		1.0 k VAC for 1 min. (between all outputs and PE terminal)									
	Insulation resistance	100 MΩ min. (between all outputs and all inputs/ PE terminals) at 500 VDC									
	Vibration resistance	10 to 55 Hz, 0.375-mm single amplitude for 2h each in X, Y, and Z directions									
	Shock resistance	300m/s ² , 3 times each in ±X, ±Y, ±Z directions									
	Output indicator	Yes (color: green)									
	EMI	Conducted Emissions (See note 3.)	Conforms to EN61204-3 EN55011 Class A and based on FCC Class A								
		Radiated Emissions	Conforms to EN61204-3 EN55011 Class A (See note 9.)								
	EMS	Conforms to EN61204-3 Low severity levels									
	Approved standards	UL: UL508 (Listing: Class 2: Per UL1310 Class 2 approved for 10-W, 25-W (except for 5-V output); and 50-W (only for 24-V output) models.), UL60950-1 cUL: CSA C22.2 No.14 (Class 2 approved for 10-W, 25-W (except for 5-V output), and 50-W (only for 24-V output) models.) cUR: CSA No. 60950-1 EN/VDE: EN50178 (=VDE0160), EN60950-1 (=VDE0805 Teil 1) Terminal types (only terminal part): VDE0106/P100 Based on VE0106/P100				Models with Terminals UL: UL508 (Listing), UL1012, UL60950-1 cUL: CSA C22.2 No. 14 (Listing) cUR: CSA No. 60950-1 EN/VDE: EN50178 (=VDE0160), EN60950-1 (=VDE0805 Teil 1) Terminal types (only terminal part): VDE0106/P100 Based on VE0106/P100 Models with Connectors UL: UL508, UL1012, UL60950-1 CSA: CSA C22.2 No.14 CSA No. 60950-1 EN/VDE: EN50178 (=VDE0160), EN60950-1 (=VDE0805 Teil 1)			UL: UL508, UL1012 CSA: EB1402C, C22.2 No. 14 EN/VDE: EN50178 (=VDE0160), EN60950-1 (=VDE0805 Teil 1) Terminal types (only terminal part): VDE0106/P100 Based on VE0106/P100		
	Weight (See note 10.)	250 g max.	350 g max.	400 g max.	500 g max.	1,000 g max.		2,000 g max.	2,500 g max.		

Dimensions

Note: All units are in millimeters unless otherwise indicated.
Open-frame type and covered type have the same dimensions.

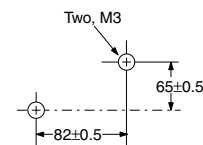
Front-mounting Bracket Models

S82J-010□□□ (10 W)

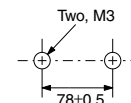


Mounting Holes (Surface Screw Mounting)

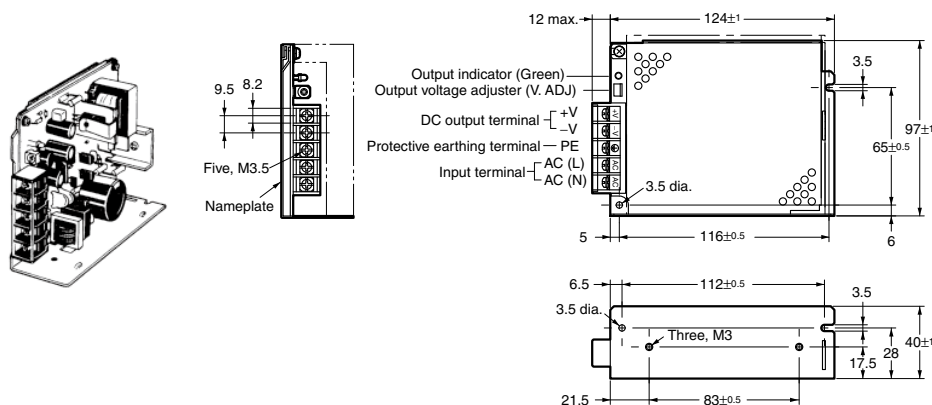
Side Mounting



Bottom Mounting

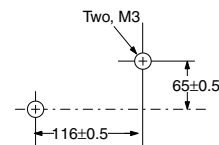


S82J-025□□□ (25 W)

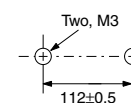


Mounting Holes (Surface Screw Mounting)

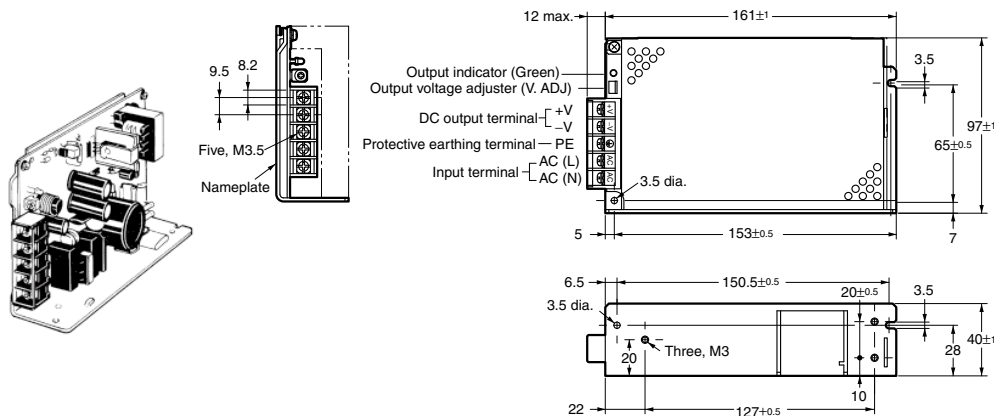
Side Mounting



Bottom Mounting

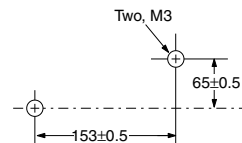


S82J-050□□□ (50 W)



Mounting Holes (Surface Screw Mounting)

Side Mounting



Bottom Mounting

