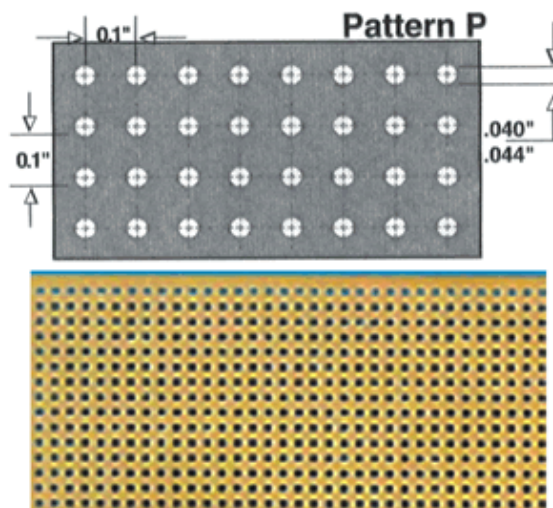


Vectorbord® Part Number : 169P79

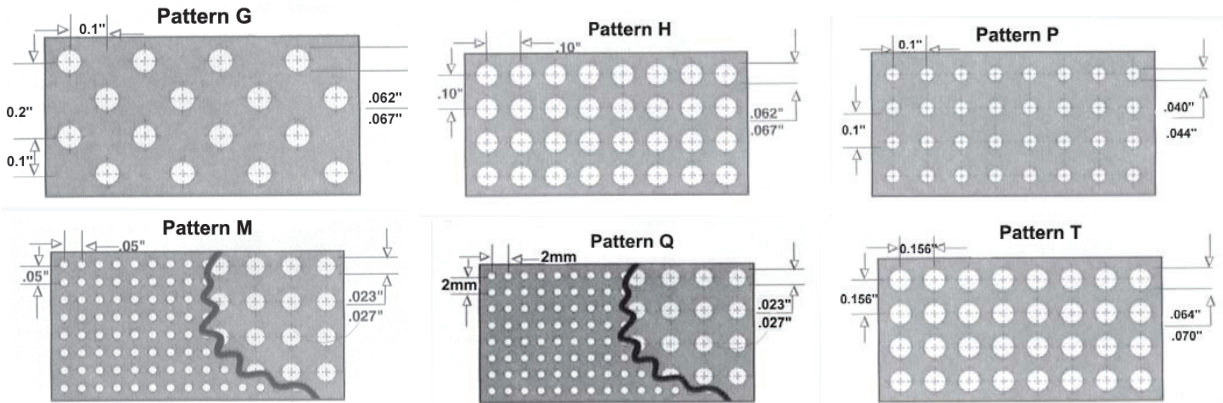
8.0" W x 17" L ... 0.042" Hole Dia.CEM-1 Epoxy Glass Composite ... Unclad Punchbord

Dimension : 8.0" W x 17.0" L (203.2 mm x 431.8 mm)
Hole Dia. : 0.042" (1.1mm)
Grid & Pattern : 0.100" x 0.100" and Pattern " P "
Board Thickness : 0.062" (1.57mm)
Material : CEM-1 Epoxy Glass Composite
NEMA Grade : CEM-1
UL Flammability Class : 94V-0



Vectorbord®

Vectorbord® general purpose pre-punched insulating punchboard is available in standard grid patterns shown below for assembling circuit components. Standard thickness is 1/16"(.062") except as noted. Vectorbord® is available in FR4 epoxy glass, FR2 phenolic, CEM-1 epoxy glass composite and **P96 GPY Hi-Temp laminate (NEW)**. Vectorbord® listed below is **copper clad or unclad only**. For 12" x 12" unpunched panels see pattern X at end of listing. Selection of terminals and other accessories located on Page . For a complete product list see Web page.



Pattern	Part. No.	Width	Length	Thick	Hole	Material Description
G	85G42WE	8.50"	17.00"	0.062"	0.062"	FR4 Epoxy Glass
P	59P44-032	4.50"	6.00"	0.031"	0.042"	FR4 Epoxy Glass
P	64P44WE	4.50"	6.50"	0.062"	0.042"	FR4 Epoxy Glass
P	64P44XXXP	4.50"	6.50"	0.062"	0.042"	FR2 Phenolic
P	64P44	4.50"	6.50"	0.062"	0.042"	CEM-1 Epoxy Glass Composite
P	84P44WE	4.50"	8.50"	0.062"	0.042"	FR4 Epoxy Glass
P	169P44C1	4.50"	17.00"	0.062"	0.042"	CEM-1 Epoxy Glass Composite, 1oz. unplated copper, 1 side
P	169P44	4.50"	17.00"	0.062"	0.042"	CEM-1 Epoxy Glass Composite
P	169P44XXXP	4.50"	17.00"	0.062"	0.042"	FR2 Phenolic
P	169P44WEC1	4.50"	17.00"	0.062"	0.042"	FR4 Epoxy Glass, 1oz. unplated copper, 1 side
P	169P44WEC2	4.50"	17.00"	0.062"	0.042"	FR4 Epoxy Glass, 1oz. unplated copper, 2 sides
P	169P44WE	4.50"	17.00"	0.062"	0.042"	FR4 Epoxy Glass
P	169P59-032	6.00"	17.00"	0.031"	0.042"	FR4 Epoxy Glass
P	169P59-047	6.00"	17.00"	0.047"	0.042"	FR4 Epoxy Glass
P	169P59C1	6.00"	17.00"	0.062"	0.042"	CEM-1 Epoxy Glass Composite, 1oz. unplated copper, 1 side
P	169P59XXXP	6.00"	17.00"	0.062"	0.042"	FR2 Phenolic
P	169P79WE	8.00"	17.00"	0.062"	0.042"	FR4 Epoxy Glass
P	169P79	8.00"	17.00"	0.062"	0.042"	CEM-1 Epoxy Glass Composite
P	169P84	8.50"	17.00"	0.062"	0.042"	CEM-1 Epoxy Glass Composite
P	169P84C1	8.50"	17.00"	0.062"	0.042"	CEM-1 Epoxy Glass Composite, 1oz. unplated copper, 1 side
P	169P84HT	8.50"	17.00"	0.062"	0.042"	GPY 260°C(TMA)Polyimide P96, no copper
P	169P84HTC2	8.50"	17.00"	0.062"	0.042"	GPY 260°C(TMA)Polyimide P96, 1oz. unplated copper, 2 sides
P	64P44HT	4.50"	6.50"	0.062"	0.042"	GPY 260°C(TMA)Polyimide P96, no copper
P	169P84WE	8.50"	17.00"	0.062"	0.042"	FR4 Epoxy Glass
P	169P84WEC1	8.50"	17.00"	0.062"	0.042"	FR4 Epoxy Glass, 1oz. unplated copper, 1 side
P	349P84	8.50"	35.00"	0.062"	0.042"	CEM-1 Epoxy Glass Composite
P	169P99	10.00"	17.00"	0.062"	0.042"	CEM-1 Epoxy Glass Composite
P	169P99WE	10.00"	17.00"	0.062"	0.042"	FR4 Epoxy Glass
H	85H48WE	4.80"	8.50"	0.062"	0.062"	FR4 Epoxy Glass
H	170H48WE-032	4.80"	17.00"	0.032"	0.062"	FR4 Epoxy Glass
H	170H48WE	4.80"	17.00"	0.062"	0.062"	FR4 Epoxy Glass
H	85H85WE	8.50"	8.50"	0.062"	0.062"	FR4 Epoxy Glass
H	170H85WE	8.50"	17.00"	0.062"	0.062"	FR4 Epoxy Glass
H	155H175WE	16.00"	18.00"	0.062"	0.062"	FR4 Epoxy Glass
M	126M76-032	4.00"	6.50"	0.037"	0.025"	FR4 Epoxy Glass
M	336M76-032	4.00"	17.00"	0.037"	0.025"	FR4 Epoxy Glass
M	336M76-032C1	4.00"	17.00"	0.037"	0.025"	FR4 Epoxy Glass, 1oz. unplated copper, 1 side
Q	47Q78WE	100mm (3.94")	160mm (6.30")	0.062"	0.6mm (.025")	FR4 Epoxy Glass
T	17T36WE	3.00"	6.00"	0.062"	0.067"	FR4 Epoxy Glass
X	12X12WE	12.00"	12.00"	0.062"	None	FR4 Epoxy Glass
X	12X12WEC1	12.00"	12.00"	0.062"	None	FR4 Epoxy Glass, 1oz. unplated copper, 1 side
X	12X12C1	12.00"	12.00"	0.062"	None	CEM-1 Epoxy Glass Composite, 1oz. unplated copper, 1 sides
X	12X12C2	12.00"	12.00"	0.062"	None	CEM-1 Epoxy Glass Composite, 1oz. unplated copper, 2 sides

Vectorbord®

