



Magnecraft

Your Contact for Industrial Relays

relay solutions

PRODUCTS

COMPANY

SALES CHANNELS

SEARCH

LIBRARY

Features & Benefits:

[Plug-In & Power Relays](#)

[Sockets](#)

[Accessories](#)

[Solid State Relays](#)

[Time Delay & Sensor Relays](#)

[Power Relays](#)

[Latching & Sequencing Relays](#)

[Printed Circuit Board Relays](#)

-- Quick Search

Search Distributor Inventory & Buy Online

Locate A Distributor

Cross-Reference A Part Number

Product Search

Select one of the Quick Search categories to conduct a search

[3D Modeling & 2D Drawings](#)

[Order Solutions Guide](#)

[Order Free Samples](#)

[Tell Us How We're Doing](#)

[RoHS Compliant Products](#)

[All Categories](#) > [Relays](#) > [Solid State](#) > [Latching & Sequencing](#) > Item # 712XAXC-120V

Request Information

Item # 712XAXC-120V 712 Alternating Relay / DPDT, 12 Amp Rating



[Download PDF](#)



[Email This Page](#)



[Save To Favorites](#)

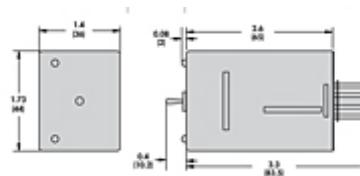
712 Alternating Relay / DPDT, 12 Amp Rating

The 712 Series Alternating Relay is designed for duplex pumping systems where it is desirable to equalize pump run time.

- 2 LED status indicators - indicates status of separate loads
- Dual voltage coils- eliminates need to specify AC or DC
- Only 36mm wide- smaller than socket, saving room on the DIN rail



[larger image](#)



[larger image](#)

MORE IMAGES

- [Example 1](#)
- [Part Description](#)
- [Example 2](#)

VIEW CAD DRAWING

- [Right Side View](#)
- [3D](#)
- [Front View](#)

DOWNLOADS



[Competitive Comparison](#)(PDF)



[Catalog PDF](#)(PDF)

Mating Sockets



[Mating Sockets](#)

Flange Adapter



[16-711C1 Relay Adapters](#)

[Contact Characteristics](#) · [Coil Characteristics](#) · [Miscellaneous Characteristics](#) · [Timing Characteristics](#) · [Performance Characteristics](#) · [Environment](#) · [Miscellaneous](#) · [Product Certifications](#)

Contact Characteristics

Contact Configuration	SPDT
Contact Rating (switching current max)	12 A
Contact Materials	Silver Alloy
Maximum Switching Voltage	300 V
Minimum Switching Requirement	100 mA at 5 VDC (0.5W)
Switching Current at Voltage (Resistive)	12 A at 240 VAC 50/60 Hz 12 A at 30 VDC
Pilot Duty	B300

Coil Characteristics	
Coil Voltage	120 VAC/VDC
Control	AC/DC
Control Type	Single Coil
Operating Range	80 to 110% DC 85 to 110% AC
Average Consumption	1.8 VA 1.8 W
Drop-out Voltage Threshold	10% DC 15% AC



[16-711C4](#)
Relay Adapters

Miscellaneous Characteristics	
Pin Orientation	8 Pin Octal

Timing Characteristics	
Alternating Action	Release of Control Switch
Time Delay (Fixed)	0.5 s
Reset Time (Maximum)	100 ms



[16-1351](#)
Relay Clips

Performance Characteristics	
Electrical Life (Resistive)	100000 Operations at Rated Current
Mechanical Life	10000000 Unpowered Operations
Dielectric Strength (AC)	1500 Vrms (Between coil & contact) 500 Vrms (Between poles) 1500 Vrms (Between contacts)

Environment	
Ambient air temperature around the device	-40 to +55 C (Operation) -40 to +85 C (Storage)
Degree of Protection	IP 40



[16-700DIN](#)
DIN Rail

Miscellaneous	
Weight	120 grams

Product Certifications	
Agency Approvals	UL UR CE CSA RoHS



[16-DCLIP-1](#)
DIN Rail

Latching, Sequence and Impulse Relays – Application Data

Energy Conservation Relays

In many applications it is important for the customer to conserve electrical energy. One approach to energy conservation in an electrical system is to use relays that do not require constant power to maintain contact closure.

“Latching relay” is a generic term that is used to describe a relay that maintains its contact position after the control power has been removed. Latching relays allow a customer to control a circuit by simply providing a single pulse to the relay control circuit. Latching relays are also desirable when the customer needs to have a relay that maintains its position during an interruption of power.

There are three main types of Latching relays. Magnetic latching, Mechanical Latching and Impulse Sequencing.

Magnetic Latching Relays

Magnetic Latching relays require one pulse of coil power to move their contacts in one direction, and another, redirected pulse to move them back. Repeated pulses from the same input have no effect. Magnetic Latching relays are useful in applications where interrupted power should not be able to transition the contacts.

Magnetic Latching relays can have either single or dual coils. On a single coil device, the relay will operate in one direction when power is applied with one polarity, and will reset when the polarity is reversed. On a dual coil device, when polarized voltage is applied to the reset coil the contacts will transition. AC controlled magnetic latch relays have single coils that employ steering diodes to differentiate between operate and reset commands.



Mechanical Latching Relays

Mechanical latching relays use a locking mechanism to hold their contacts in their last set position until commanded to change state, usually by means of energizing a second coil. Since the relay does not rely on a magnet, the locking strength will not degrade over time or weaken during thermal cycling. The contacts will remain locked in the directed position until the opposing coil has been energized. Packaging machinery that places several units into a single container would be a good example.



Impulse Relays

Impulse relays are a form of latching relay that transfers the contacts with each pulse. Many impulse relays are made up of a magnetic latch relay and a solid state steering circuit that, upon application of power, determines which position the relay is in and energizes the opposite coil. The contacts transfer and hold that position when power is removed. When reenergized, the contacts transfer again and hold that position, and so on. In order to transfer the contacts, one simply provides a single unidirectional pulse. There is no need to redirect the control pulse or reverse the polarity.

Impulse relays can be used as wear equalizers. They are well suited for applications such as turning a single device on or off from one or more locations with a single momentary switch or push button at each station. For example, a conveyor could be started and/or stopped from multiple locations by means of a single button at each position.



Alternating Relay – Application Data



712 Alternating Relay

In many industrial pumping applications, two identical pumps are used for the same job. A standby unit is available in case the first pump fails. However, a completely idle pump might deteriorate and provide no safety margin. Alternating relays prevent this by assuring that both pumps get equal run time.



The Model 712 Series Alternating Relay is designed for duplex pumping systems where it is desirable to equalize pump run time. The solid state alternating circuit drives an internal electromechanical relay. A continuous power source and control switch is required.

The control switch (float, pressure or other isolated contact) is connected as shown in the respective wiring diagrams. Each time the control switch is opened the output contacts will change status. Indicator lights on the case show the internal relay status.

Setting the top toggle switch to the “center position” alternates the load; while setting the switch to “Load 1” or “Load 2” will lock the relay in the respected position, preventing alternation.

The alternating relay approach isn't limited to pumping applications. The control switches could be thermostats or pressure switches, and the loads could be fans or compressors.

Applications:

INDUSTRIAL
AUTOMATION



INDUSTRIAL
APPLIANCES



PACKING
MACHINES



PUMPING
MACHINES



COMPRESSORS



INDUSTRIAL
FANS



Advantages of the 712 Alternating Relay

The Complete System Solution!



Highest Grade
Electronic Components
RoHS Compliant.

The Model 712 series Alternating Relay is designed for duplex pumping systems where it is desirable to equalize pump run time. The solid state alternating circuit drives an internal electromechanical relay. A continuous power source and control switch are required.

The control switch (float, pressure or other isolated contact) is connected between the L1 terminal and the control terminal. Each time the control switch is opened the output contacts will change status. Indicator lights on the case show the internal relay status.

Setting the top toggle switch to Load 1 or Load 2 will lock the relay in position, preventing alternation.

UL Listed when 712 Relay
and Octal Socket are Combined
UL Approved for Field Replacement.

- Offers a "one stop solution" for your pump management system.
- Several configurations available to meet your individual needs.
- Switching capabilities up to 12 amps.
- Two LED status indicators; indicate status of the separate loads independently.
- Dual Voltage Coils eliminate the need to specify AC or DC (AC only for 240 volts).
- Only 36 mm's wide; does not take up any additional room on the DIN rail.
- Color and appearance designed for high visibility in all environments.
- Engineering availability allows for customized control system solutions.



See Section 3 p.14-16



**16-711C1
FLANGE ADAPTER**



**16-711C4
DIN RAIL ADAPTER**

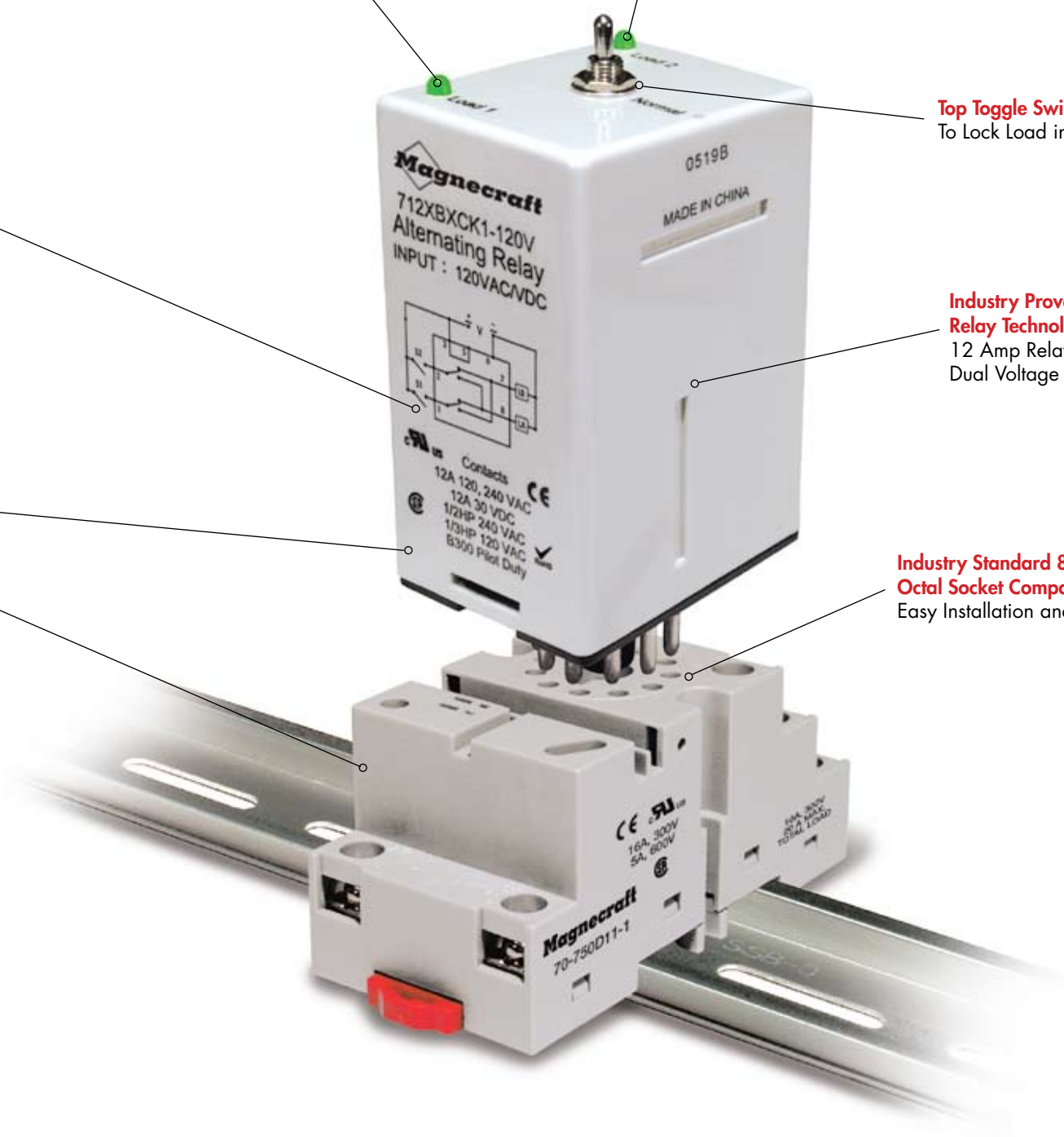
Load 1 Indicator
Indicates when Load 1 is Active.

Load 2 Indicator
Indicates when Load 2 is Active.

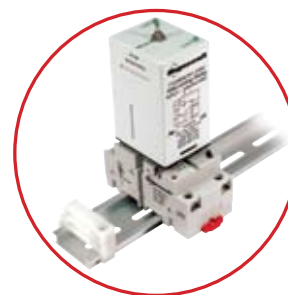
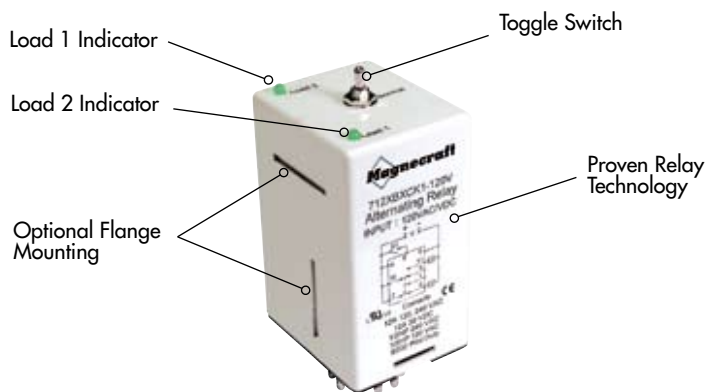
Top Toggle Switch
To Lock Load in Position.

Industry Proven Power Relay Technology
12 Amp Relay with Dual Voltage Capability.

Industry Standard 8 or 11 Pin Octal Socket Compatible
Easy Installation and Replacement.



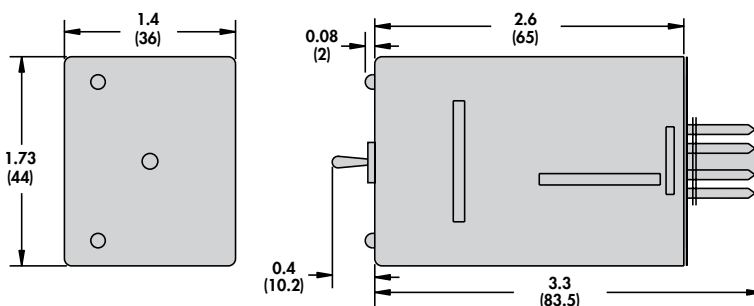
712 Alternating Relay/DPDT, 12 Amp Rating



712 Relay with the 70-750DL8-1 Socket

General Specifications (UL 508)

Contact Characteristics		Units	712XAXC	712XBXC	712XBXCK	712XBXCK1
Number and type of Contacts			SPDT	DPDT CROSS WIRED	DPDT, PIN 9 - NO PIN 11 - NC	DPDT, PIN 9 - NC PIN 11 - NO
Contact materials			Silver Alloy			
Thermal (Carrying) Current		A	12			
Maximum Switching Voltage		V	300			
Current rating		~	Resistive 12A @ 240V 50/60Hz			
Switching voltage		~	Resistive 12A @ 30V			
		~	HP 1/3 @ 120 VAC			
		~	HP 1/2 @ 240 VAC			
		~	Pilot Duty B300			
Minimum Switching Requirement		mA	100 @ 5 VDC (.5W)			
Coil Characteristics						
Voltage Range		~	V 12, 24, 120			
		~	V 240			
Operating Range		% of Nominal	~			
		~	V 80% to 110%			
		~	V 80% to 110%			
Average consumption		~	V 1.8			
		~	W 1.8			
Drop-out voltage threshold		~	V 15%			
		~	VDC 10%			
Timing Characteristics						
Time Delay - Fixed			s 0.5			
Reset Time			ms 100			
Alternating Action		Maximum	Release of Control Switch			
Performance Characteristics						
Electrical Life (UL 508)			(Resistive)	100,000		
Mechanical Life		Operations @		10,000,000		
Rated insulation voltage		Rated Current		1500		
		Unpowered	~	V(rms) 500		
		Between coil and contact	~	V(rms) 1500		
		Between poles	~	V(rms) 500		
		Between contacts	~	V(rms) 1500		
Environment						
Product certifications			UR, CSA, CE			
Ambient air temperature around the device		Standard version	°C	-30...+70		
Degree of protection		Storage	°C	-20...+60		
Weight		Operation		IP 40		
			grams	120		



Standard Part Numbers

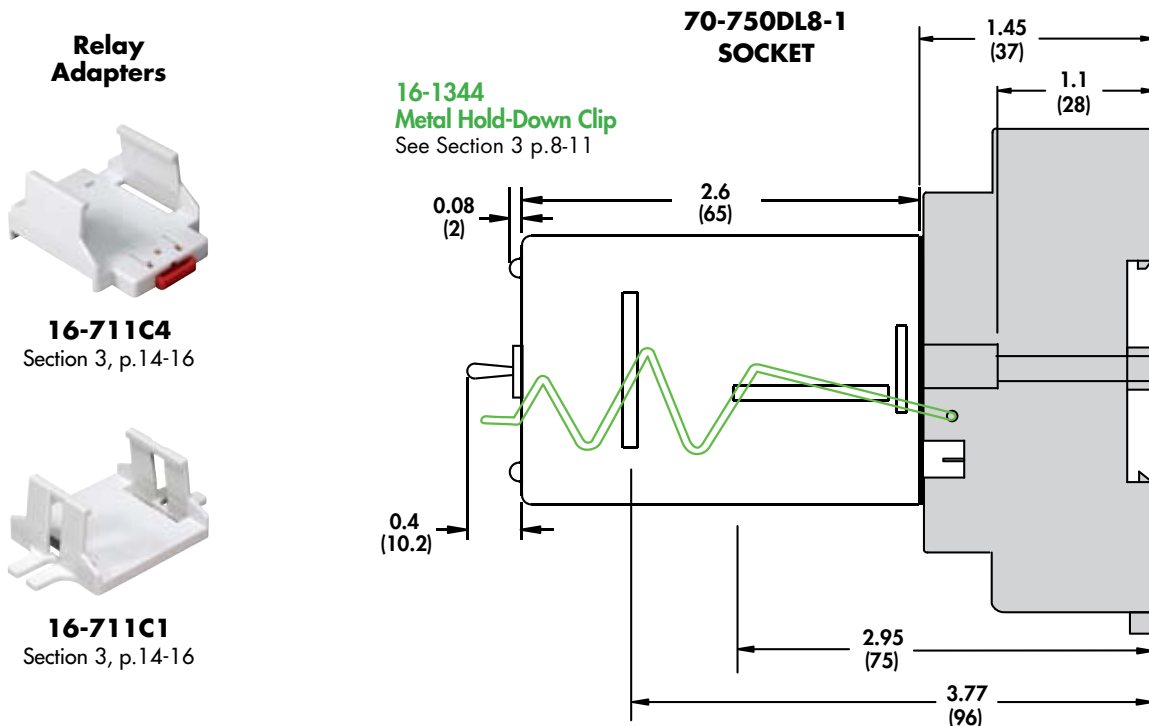
BOLD-FACED PART NUMBERS ARE NORMALLY STOCKED

Part Numbers	Input Voltage	Timing Range	Contact Configuration	Rated Load Current
8 Pin Octal Base, SPDT				
712XAXC-12V	12 VAC/VDC	0.5s Fixed	SPDT	12 Amps
712XAXC-24V	24 VAC/VDC	0.5s Fixed	SPDT	12 Amps
712XAXC-120V	120 VAC/VDC	0.5s Fixed	SPDT	12 Amps
712XAXC-240A	240 VAC	0.5s Fixed	SPDT	12 Amps
8 Pin Octal Base, DPDT (CROSS WIRED)				
712XBXC-12V	12 VAC/VDC	0.5s Fixed	DPDT	12 Amps
712XBXC-24V	24 VAC/VDC	0.5s Fixed	DPDT	12 Amps
712XBXC-120V	120 VAC/VDC	0.5s Fixed	DPDT	12 Amps
712XBXC-240A	240 VAC	0.5s Fixed	DPDT	12 Amps
11 Pin Octal Base, DPDT (PIN 11 NC)				
712XBXCK-12V	12 VAC/VDC	0.5s Fixed	DPDT	12 Amps
712XBXCK-24V	24 VAC/VDC	0.5s Fixed	DPDT	12 Amps
712XBXCK-120V	120 VAC/VDC	0.5s Fixed	DPDT	12 Amps
712XBXCK-240A	240 VAC	0.5s Fixed	DPDT	12 Amps
11 Pin Octal Base, DPDT (PIN 11 NO)				
712XBXCK1-12V	12 VAC/VDC	0.5s Fixed	DPDT	12 Amps
712XBXCK1-24V	24 VAC/VDC	0.5s Fixed	DPDT	12 Amps
712XBXCK1-120V	120 VAC/VDC	0.5s Fixed	DPDT	12 Amps
712XBXCK1-240A	240 VAC	0.5s Fixed	DPDT	12 Amps

Part Number Builder

Series	Contact Configuration	Pin Orientation	-	Input Voltage
712	XAX = SPDT	C = 8 OCTAL	-	12V = 12 VAC/VDC
	XBX = DPDT	CK = 11 PIN OCTAL (PIN 11 NC)		24V = 24 VAC/VDC
		CK1 = 11 PIN OCTAL (PIN 11 NO)		120V = 120 VAC/VDC
				240V = 240 VAC

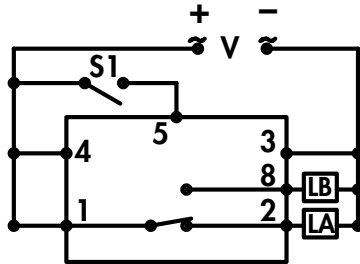
Other mating sockets see Section 2: **70-750DL11-1, 70-750E8-1, 70-750E11-1, 70-464-1, 70-465-1, 70-169-1, 70-170-1**



Theory of Operation

Wiring Diagram:
712XAXC

8 Pin Octal, with an SPDT
Contact Configuration.



A.

V is Input Voltage
LA is Load #1
LB is Load #2
S1 is Control Switch #1

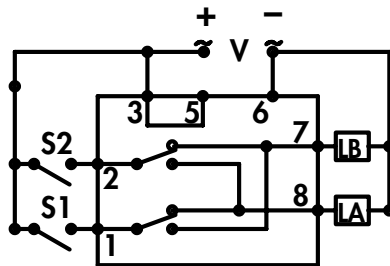
If the Top Toggle Switch is in "Alternate" position closing Switch S1 will alternate the loads between LA and LB.

If the Top Toggle Switch is in "Lock 1" position Load LA is ON and Load LB is OFF. Switch S1 is not used in this mode.

If the Top Toggle Switch is in "Lock 2" position Load LA is OFF and Load LB is ON. Switch S1 is not used in this mode.

Wiring Diagram:
712XBXC (DUPLEX)

8 Pin Octal, with a DPDT
Contact Configuration.
Duplex Capabilities.



B.

V is Input Voltage
LA is Load #1
LB is Load #2
S1 is Control Switch #1
S2 is Control Switch #2

If the Top Toggle Switch is in "Alternate" position closing Switch S1 will alternate the loads between LA and LB while switch S2 will only control LA.

If the Top Toggle Switch is in "Lock 1" position Switch S1 will control LA while switch S2 will control LB.

If the Top Toggle Switch is in "Lock 2" position Switch S1 will control LB while switch S2 will control LA.

Duplex (Cross Wired) Functionality: This model operates the same as alternating relays except when both the control Switches S1 and S2 are closed, Load A and Load B energize simultaneously. The DPDT 8-pin, cross wired option, allows extra system load capacity through simultaneous operation of both motors when needed. Relay contacts are not isolated.