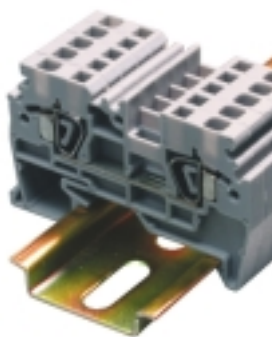


FEED-THROUGH Spring Clamp Terminals

These terminal blocks offer a time saving alternative to the popular screw clamp connection. They can be mounted on 35 mm DIN rails. Insulated push-in type jumpers offer a quick and shock proof solution for most cross-connection applications.



MULTI-CONNECTION Spring Clamp Terminals



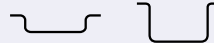
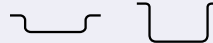
Altech Multiple connection Spring Clamp terminals offer a reliable solution for problems posed by multiple voltage connections. The terminal eliminates conventional method of cross connection / looping, saving additional space.

The terminals provide possibility of further multiplication of connections through bridging. The Multiple Connection Terminal Blocks can even be bridged to Standard Feed Through Spring Clamp Terminal Block of respective wire size (CSC2.5T / CSC4T).

	CSC2.5T			CSC4T			CSC6T					
Terminal Width	5 mm			6 mm			8 mm					
Height x Length	36 x 58 mm			42 x 65 mm			45 x 72 mm					
Stripping Length	9 mm			9 mm			12 mm					
Insulation Material	Polyamide 6.6			Polyamide 6.6			Polyamide 6.6					
Type of Connection	2 spring clamps & 2 slots for interconnection			2 spring clamps & 2 slots for interconnection			2 spring clamps & 2 slots for interconnection					
Approvals												
Wire Range	22-14 AWG 0.5-2.5 sq.mm 22-14 AWG			22-12AWG 0.5-4 sq.mm 22-12 AWG			22-8AWG 0.5-8sq.mm 22-8AWG					
Voltage Rating	600 V 750 V 600 V			600 V 750 V 600 V			600 V 750 V 600 V					
Current Rating	20 A 24 A 20 A			25 A 32 A 25 A			50 A 41 A 50 A					
		Cat. No.	Std. Pk.		Cat. No.	Std. Pk.		Cat. No.	Std. Pk.			
Terminal Block		CSC2.5T	100		CSC4T	100		CSC6T	50			
End Plate		EPCSC2.5T	50		EPCSC4T	50		EPCSC6T	50			
Partition Plate		PPCSC2.5T	50		PPCSC4T	50		PPCSC6T	50			
DIN Rail <i>for ordering information refer to page 58</i>												
End Stop <i>for ordering information refer to page 58</i>		CA702	50		CA702	50		CA702	50			
		CA802	50		CA802	50		CA802	50			
Jumpers Adjacent Alternate		CA801/1	100		CA801/2	100		CA801/3	100			
		CA801/1-3	100		CA801/2-3	100		CA801/3-3	100			
Push in type wire jumper		CA901/1	100		CA901/2	100						
Marking Tags (MT Type)		MT5	100		MT6	100		MT8	100			
Continuous 90mm strip 		MT9F	10		MT9F	10		MT9F	10			

CSC2.5T1-2	CSC2.5T2-2	CSC4T1-2	CSC4T2-2
			
CE	CE	CE	CE
5 mm	5 mm	6 mm	6 mm
36 x 74 mm	36 x 89.8 mm	42 x 84.6 mm	42 x 105 mm
9 mm	9 mm	9 mm	9 mm
Polyamide 6.6	Polyamide 6.6	Polyamide 6.6	Polyamide 6.6
3 spring clamps & 2 slots for interconnection	4 spring clamps & 2 slots for interconnection	3 spring clamps & 2 slots for interconnection	4 spring clamps & 2 slots for interconnection
 	 	 	 
0.5-2.5 sq.mm. 22-14 AWG	0.5-2.5 sq.mm. 22-14 AWG	0.5-4 sq.mm. 22-12 AWG	0.5-4 sq.mm. 22-12 AWG
750 V 600 V	750 V 600 V	750 V 600 V	750 V 600 V
24 A 20 A	24 A 20 A	32 A 25 A	32 A 25 A

Cat. No.	Std. Pk.	Cat. No.	Std. Pk.	Cat. No.	Std. Pk.	Cat. No.	Std. Pk.
CSC2.5T1-2	100	CSC2.5T2-2	50	CSC4T1-2	50	CSC4T2-2	50
EPCSC2.5T1-2	50	EPCSC2.5T2-2	50	EPCSC4T1-2	50	EPCSC4T2-2	50

							
CA702	50	CA702	50	CA702	50	CA702	50
CA802	50	CA802	50	CA802	50	CA802	50
CA801/1	100	CA801/1	100	CA801/2	100	CA801/2	100
CA801/1-3	100	CA801/1-3	100	CA801/2-3	100	CA801/2-3	100
CA901/1	100	CA901/1	100	CA901/2	100	CA901/2	100
MT5	100	MT5	100	MT6	100	MT6	100
MT9F	10	MT9F	10	MT9F	10	MT9F	10

PANEL MOUNT SPRING CLAMP TERMINALS

Altech "screwless" spring clamp panel mount terminal blocks are an excellent solution for extremely compact wiring applications. These terminal blocks are "add-on" type and can be stacked to form multi-pole assemblies. The stacked assembly is fitted with mounting end sections on both ends for easy installation on to the panel.

The terminal has marker holding recesses on three sides to accept marking tags. Cross connection can be achieved with the aid of insulated jumpers.

The CSCP2.5T2 panel mount terminal blocks have two connection points on each side. The terminals provide possibility of further multiplication through jumpering.



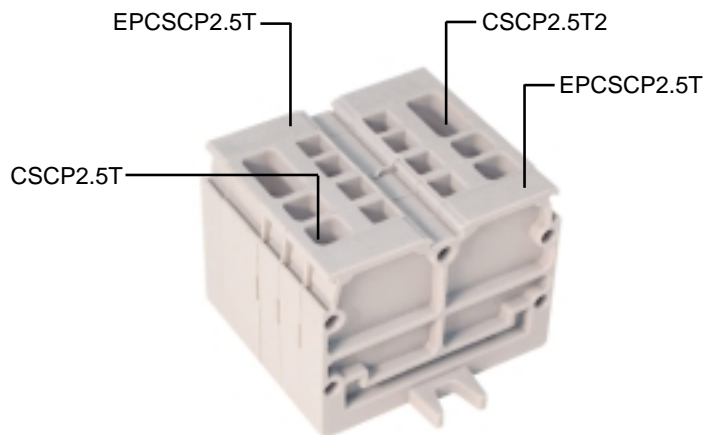
CSCP2.5T

CSCP2.5T2



Terminal Width	5 mm		10 mm	
Height x Length	27 x 35 mm		27 x 35 mm	
Stripping Length	9 mm		9 mm	
Insulation Material	Polyamide 6.6		Polyamide 6.6	
Type of Connection	2 spring clamp connections		4 spring clamp connections	
Approvals				
Wire Range	0.5-2.5 sq.mm	22-14AWG	0.5-2.5 sq.mm	22-14AWG
Voltage Rating	750 V	600 V	750 V	600 V
Current Rating	24 A	20 A	24 A	20 A

	Cat. No.	Std. Pk.	Cat. No.	Std. Pk.
Terminal Block	CSCP2.5T	100	CSCP2.5T2	100
End Section (set of left and right)	EPCSCP2.5T	50	EPCSCP2.5T	50
Insulated Jumper (2 pole)	CA803/1	100	CA803/1	100
Marking Tags (MT Type)	MT4	100	MT3	100



NEW PRODUCTS AVAILABLE IN 2003

CSCGT4T

Altech spring clamp ground block snaps on the DIN rail, making a reliable electrical connection between the DIN rail and the terminal block.

CSCFL4T

Altech spring clamp fuse blocks provide protection in electrical circuits. These fuse blocks accept standard Ø5x20 and Ø5x25 mm fuses.

CTS16U

CTS16U is a standard feed-through terminal block for 12-4 AWG wires.

CSCGT4T



CSCFL4T

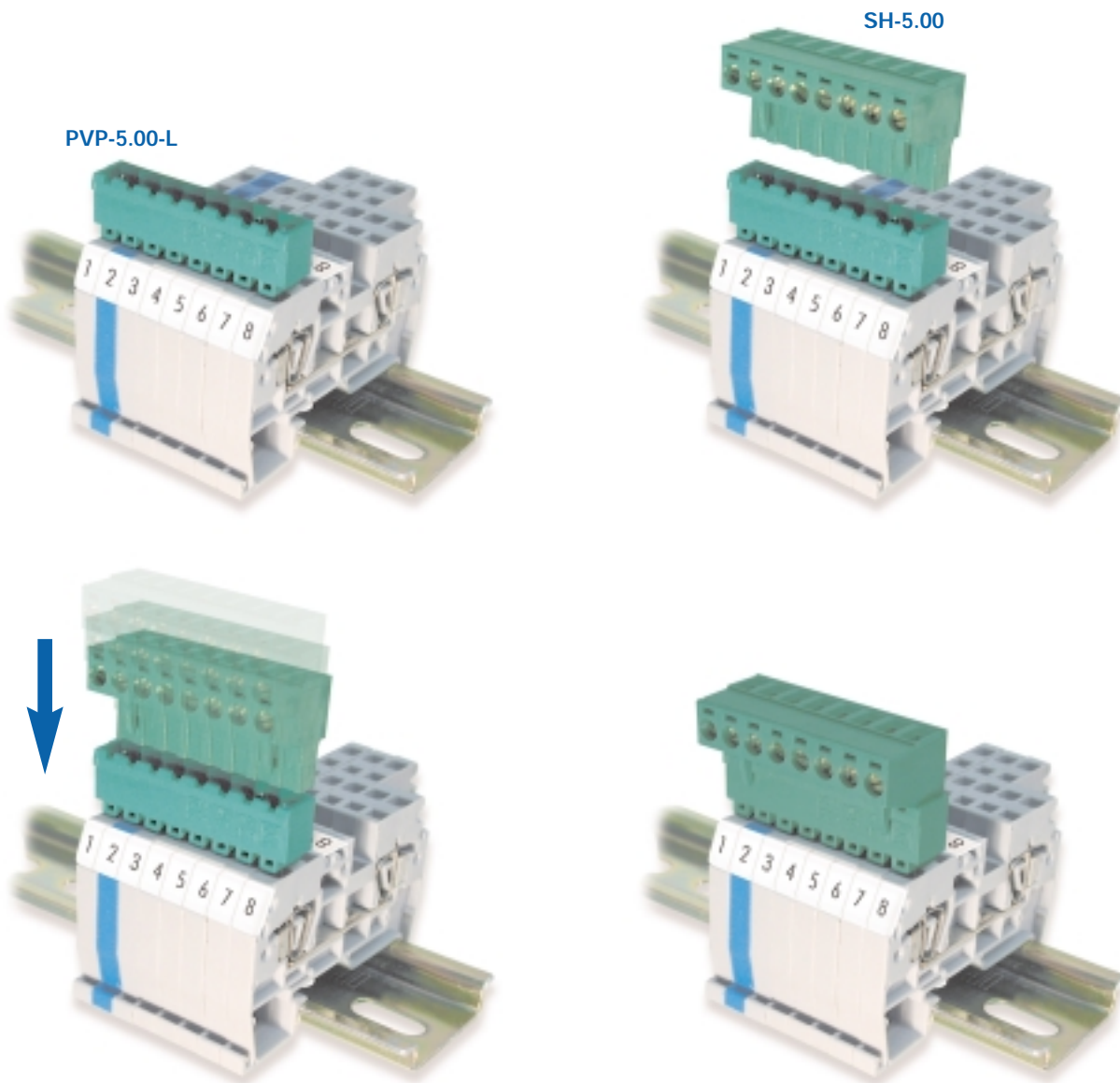


CST16U



Terminal Width	6 mm		8 mm		12 mm	
Stripping Length	9 mm		9 mm		18 mm	
Insulation Material	Polyamide 6.6		Polyamide 6.6		Polyamide 6.6	
Type of Connection	2 spring clamps		2 spring clamps & 2 slots for interconnection		2 screw clamps & 1 tapped hole for cross connection	
Ratings						
Wire Range	0.2-4 sq.mm	22-12 AWG	0.2-4 sq.mm	22-12 AWG	6-16 sq.mm	12-4 AWG
Voltage Rating	750 V	600 V	750 V	600 V	750 V	600 V
Current Rating	32 A	-	6.3 A	6.3 A	82 A	85 A
Terminal Block	Cat. No.	Std. Pk.	Cat. No.	Std. Pk.	Cat. No.	Std. Pk.
End Plate	EPCSCGT4T	50	EPCSCFL4T	50	EP25U	50
Partition Plate	-	-	-	-	PP25U	50
DIN Rail <i>for ordering information refer to page 58</i>						
End Stop	CA702	50	CA702	50	CA702	50
	CA802	50	CA802	50	CA802	50
Marking Tags (MT Type)	MT6	100	MT8	100	MT12	100
Continuous 90mm strip	MT9F	10	MT9F	10	MT9F	10

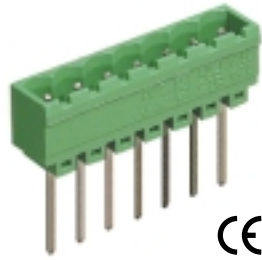
Pluggable Spring Clamp Terminal Blocks



The PVP-5.00-L header and the SH-5.00 plug can be used in conjunction with the CSC2.5T, CSC2.5T1-2 or CSC2.5T2-2 terminal blocks to build pluggable interfaces. The operating tool CAOPT is used to insert the headers in the spring clamp blocks. The plug can now be snapped into the header for quick and reliable wiring. MT5 and MT9F marking tags can be used for circuit identification.

PVP-5.00-L

Pin Spacing: 5.00mm
 Orientation: Vertical Header
 Clamp Type: -
 Design: Single Mold - Closed End



ELECTRICAL

Current **Voltage** **Wire Range**



12A

300V

-



16A

450V

-

INSTALLATION

DATA

Screw Size - **PCB Hole Size** 1.5mm
Torque - **Stripping Lgth.** -

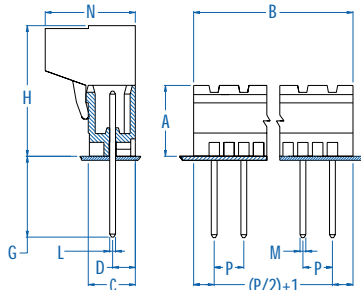
MATERIAL

Body PA6.8 **Screw** -
Flammability Class UL94V-0 **Terminal** Tin Plated Brass
Temperature Limit 105°C UL **Clamp** -
 125°C IEC
Color Green

No. Poles	Cat. No.	Length (B) (mm)	Std. Pk.
2	PVP02-5.00-L	12.0	100
3	PVP03-5.00-L	17.0	100
4	PVP04-5.00-L	22.0	50
5	PVP05-5.00-L	27.0	50
6	PVP06-5.00-L	32.0	50
7	PVP07-5.00-L	37.0	50
8	PVP08-5.00-L	42.0	50
9	PVP09-5.00-L	47.0	50
10	PVP10-5.00-L	52.0	50

Accessories

Operating Tool	Cat. No.	Std. Pk.
2 Pole	CAOPT/2	1
5 Pole	CAOPT/5	1
10 Pole	CAOPT/10	1



Dimensions

A	12.20 mm	I	-
B	*	J	-
C	8.10 mm	K	-
D	4.00 mm	L	1.00 mm
E	-	M	1.00 mm
F	-	N	15.50 mm
G	14.40 mm	O	-
H	23.15 mm	P	5.00 mm

SH-5.00

Pin Spacing: 5.00mm
 Orientation: Horizontal Plug
 Clamp Type: Screw Cage
 Design: Single Mold



ELECTRICAL

Current **Voltage** **Wire Range**



12A

300V

30-14AWG



16A

450V

2.5mm² Stranded
 4.0mm² Solid

INSTALLATION

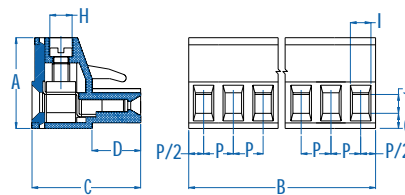
DATA

Screw Size M3 **PCB Hole Size** -
Torque 0.5Nm **Stripping Lgth.** 7.5mm
 (4.5 lbf-in.)

MATERIAL

Body PA6.8 **Screw** Galvanized Steel
Flammability Class UL94V-0 **Terminal** Nickel Plated Brass
Temperature Limit 105°C UL **Clamp** Nickel Plated Brass
 125°C IEC
Color Green

No. Poles	Cat. No.	Length (B) (mm)	Std. Pk.
2	SH02-5.00	10.0	100
3	SH03-5.00	15.0	100
4	SH04-5.00	20.0	50
5	SH05-5.00	25.0	50
6	SH06-5.00	30.0	50
7	SH07-5.00	35.0	50
8	SH08-5.00	40.0	50
9	SH09-5.00	45.0	50
10	SH10-5.00	50.0	50



Dimensions

A	15.50 mm	I	2.80 mm
B	*	J	3.10 mm
C	19.15 mm	K	-
D	8.30 mm	L	-
E	-	M	-
F	-	N	-
G	-	O	2.70 mm
H	3.80 mm	P	5.00 mm