

C&K PM Series 5 Tumbler Miniature Snap-in Switchlocks

Features/Benefits

- International agency listings
- Snap-in mounting
- Wire lead terminations available
- Variety of lock and key colors
- 5 Tumbler lock with positive detent

Typical Applications

- Computers
- Point-of-sale terminals
- Marine equipment



Specifications

CONTACT RATING: Q contact material: 4 AMPS @ 125 V AC or 28 V DC; 2 AMPS @ 250 V AC (UL/CSA); 4 AMPS @ 125 V AC, 2 AMPS @ 250 V AC, T65 (VDE). See page L-33 for additional ratings.

ELECTRICAL LIFE: 10,000 make-and-break cycles at full load.

CONTACT RESISTANCE: Below 10 m Ω typ. initial @ 2-4 V DC, 100 mA, for both silver and gold plated contacts.

INSULATION RESISTANCE: 10⁹ Ω min.

DIELECTRIC STRENGTH: 1,000 Vrms min. @ sea level.

INDEXING: 90°:2 positions.

Materials

LOCK: 6/6 nylon with matte finish (UL 94V-2), color black, other colors available. 5 tumbler, single bitted lock with integral detent mechanism.

KEYS: Two nickel plated brass keys with black plastic head, other colors available.

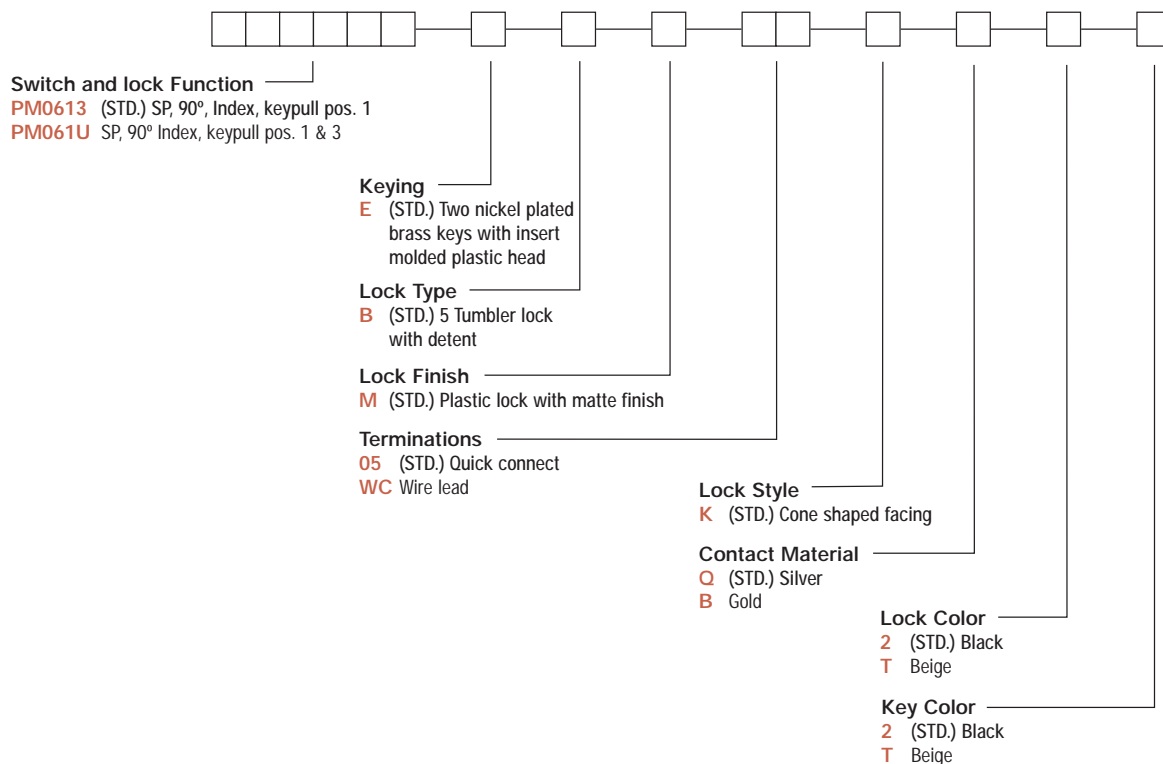
SWITCH HOUSING: 6/6 nylon (UL 94V-2).

CONTACTS & TERMINALS: Q contact material: Copper, silver plated. See page L-33 for additional contact materials.

NOTE: Specifications and materials listed above are for switchlocks with standard options. For information on specific and custom switchlocks, consult Customer Service Center.

Build-A-Switch

To order, simply select desired option from each category and place in the appropriate box. Available options are shown and described on pages L-32 and L-33. For additional options not shown in catalog, consult Customer Service Center.



Switchlock

C&K PM Series 5 Tumbler Miniature Snap-in Switchlocks

SWITCH AND LOCK FUNCTION

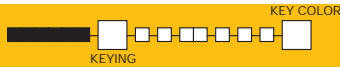
NO. POLES	MODEL NO.	SWITCH FUNCTION		KEY PULL POSITIONS	LOCK CONFIGURATION	INDEXING
		POS. 1	POS. 2			
SP	PM0613 (STD.)	OFF	ON	Positions 1, 2 & 3		90°
	PM061U			Positions 1 & 2		
<p>SP</p> <p>Part number shown: PM0613EBM05KQ22</p>						

All models with all options when ordered with 'Q' contact material.

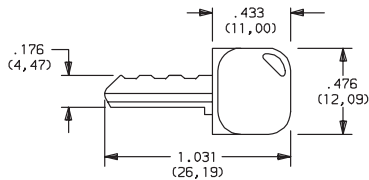
LEGEND

- = Detent Position (90°)
- ⊙ = Key pull possible in these positions.
- ⊙ = Stop Positions

KEYING



E (STD.) TWO NICKEL PLATED BRASS KEYS WITH INSERT MOLDED PLASTIC HEAD

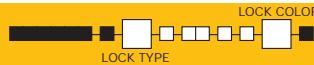


Key part number: 16916004102

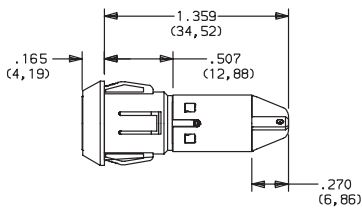
OPTION CODE	KEY COLOR
2	(STD.) BLACK
T	BEIGE

NOTE: Molded plastic head color is black, standard. For more than one key code, replacement keys, available key colors or other special features, consult Customer Service Center.

LOCK TYPE



B (STD.) 5 TUMBLER LOCK WITH DETENT



OPTION CODE	LOCK COLOR
2	(STD.) BLACK
T	BEIGE

NOTE: Other colors available, consult Customer Service Center



Third Angle Projection
Dimensions are shown: IN (mm)
Dimensions subject to change

C&K PM Series 5 Tumbler Miniature Snap-in Switchlocks

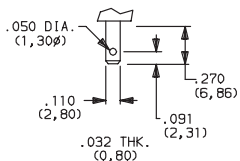
LOCK FINISH

M (STD.) PLASTIC LOCK WITH MATTE FINISH

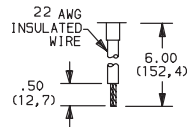


TERMINATIONS

05 (STD.) QUICK CONNECT



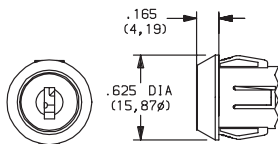
WC WIRE LEAD



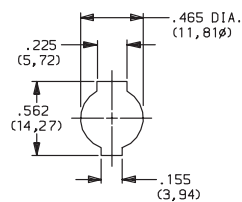
UL style 1015.
Black wire standard, other colors and lengths available, consult Customer Service Center.

LOCK STYLE

K (STD.) CONE SHAPED FACING



PANEL MOUNTING



Panel thickness:
.050-.080 (1,27-2,03)

CONTACT MATERIAL

OPTION CODE	CONTACT AND TERMINAL MATERIAL	RATINGS	
		POWER	
Q (STD.)	SILVER ²	4 AMPS @ 125 V AC or 28 V DC, 2 AMPS @ 250 V AC (UL/CSA). 4 AMPS @ 125 V AC; 2 AMPS @ 250 V AC; T65 (VDE).	
B	GOLD ¹	LOW LEVEL/DRY CIRCUIT	0.4 VA MAX. @ 20 V AC OR DC MAX.

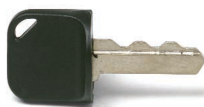
CONTACT MATERIAL/APPLICATION RECOMMENDATIONS—SEE SECTION N.

¹ CONTACTS & TERMINALS: Copper, with gold plate over nickel plate.

² CONTACTS & TERMINALS: Copper, silver plated (standard with all termination options).

All models with all options when ordered with 'Q' contact material.

AVAILABLE HARDWARE



Key Code: 041

PART NO. (ONE KEY)

16916004102 BLACK

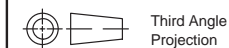
16916004100 BEIGE

Material: Brass

Finish: Nickel plate

6/6 Nylon insert molded head

NOTE: Other key colors available, consult Customer Service Center.



Dimensions are shown: IN (mm)
Dimensions subject to change