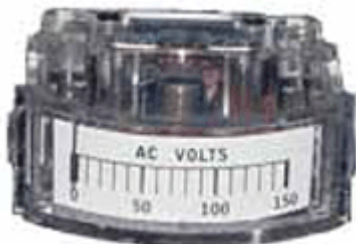




## Electrical Test Equipment

### Edgewise Model E-20, CK-256 and CK-257 Panel Meter



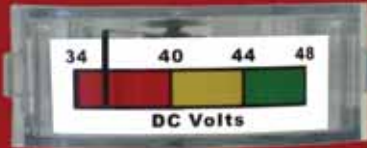
These edgewise meters are suitable for many applications requiring a low cost solution. The standard case is polystyrene, however UL Polycarbonate is available. Accuracy is +/- of full scale and most AC/DC ranges are available.

### Features & Benefits

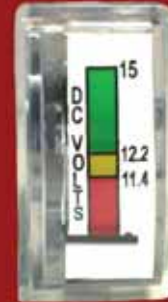
- **Typical Uses**  
Test Equipment, Power Supplies, Emergency Lighting, Chargers, Recreational Equipment, etc.
- **Features**  
Quick Snap in ears, No brackets required!!

# Edgewise Analog Panel

The E-20 and CK-150 Series edgewise meter are suitable for many applications requiring a low cost solution. The standard case is polystyrene, but UL Polycarbonate is available. Accuracy is  $\pm 5\%$  of full scale and most AC/DC ranges are available. Typical uses include test equipment, power supplies, emergency lighting chargers, recreational equipment, etc. Features quick snap in ears...no brackets required!

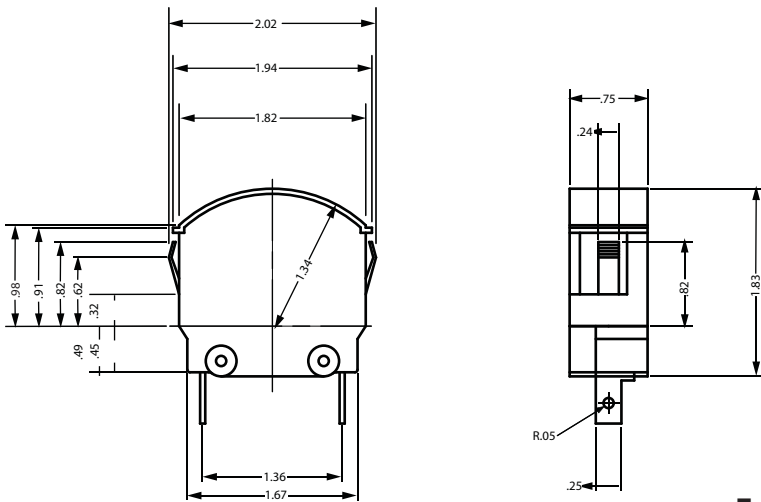


E-20  
CK-256  
CK-257

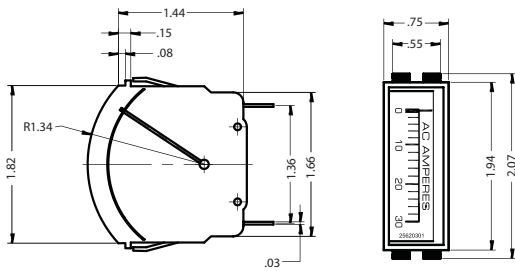


CK-150  
CK-160

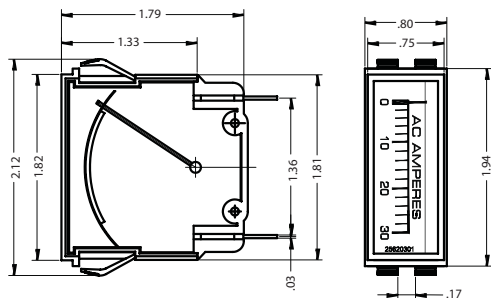
## DIMENSIONS:



E-20  
(Polycarbonate)



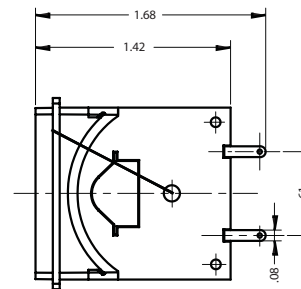
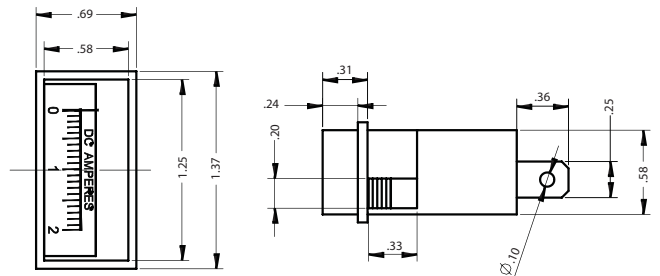
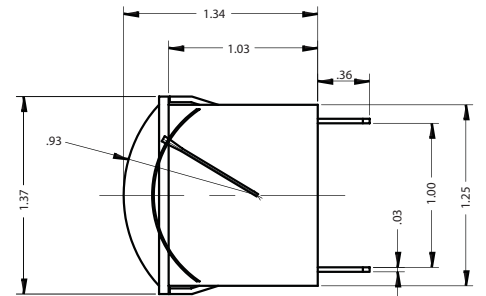
CK-256



CK-257



CK-150



CK-160

