

HOME

MEET TEAM DANTONA

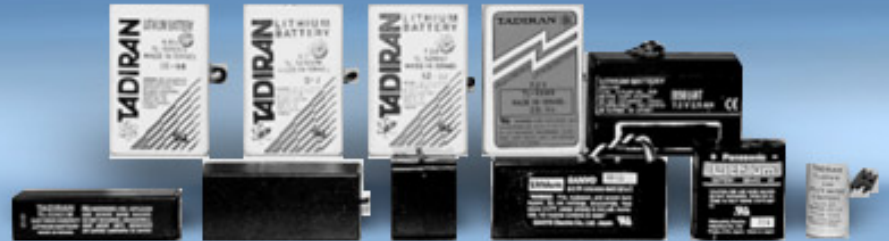
FIND A DISTRIBUTOR

CONTACT US

DANTONA
INDUSTRIES, INC.

For all your battery needs!

Computer Packs



DANTONA PART SEARCH

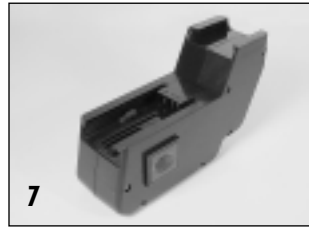
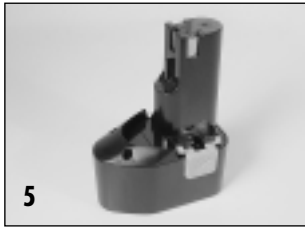
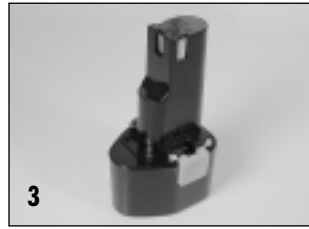
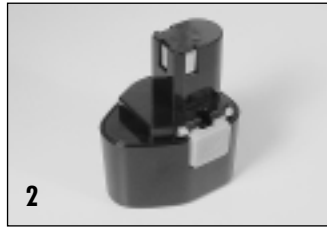


Dantona Part # TOOL-119

Voltage: 2.4
Capacity: 2400
Composition: NI-CD
Dimensions:
Connector:

POWERTOOL BATTERIES

BATTERIES COMPATIBLE WITH MILWAUKEE® PRODUCTS



PIC #	VOLTS	PART#	mAh	TYPE	X-REFERENCE W/Milwaukee Battery Numbers
1	2.4V	TOOL-118	1500	NICD	48-11-0100
		TOOL-134	2000	NICD	HI-CAP
		TOOL-119	2400	NICD	SUPER HI-CAP
2	7.2V	TOOL-120	1500	NICD	48-11-0130
		TOOL-135	2000	NICD	HI-CAP
		TOOL-121	2400	NICD	SUPER HI-CAP
3	9.6V	TOOL-122	1500	NICD	48-11-0080
		TOOL-136	2000	NICD	HI-CAP
		TOOL-123	2400	NICD	SUPER HI-CAP
4	12V	TOOL-124	1500	NICD	48-11-1950
		TOOL-137	2000	NICD	48-11-1900
		TOOL-125	2400	NICD	SUPER HI-CAP

PIC #	VOLTS	PART#	mAh	TYPE	X-REFERENCE W/Milwaukee Battery Numbers
5	12V	TOOL-126	1500	NICD	48-11-0140/0200
		TOOL-138	2000	NICD	48-11-0250
		TOOL-127	2400	NICD	48-11-0300
6	14.4V	TOOL-128	1500	NICD	48-11-1000
		TOOL-139	2000	NICD	HI-CAP
		TOOL-129	2400	NICD	48-11-1024
7	18V	TOOL-130	1500	NICD	STANDARD CAP
		TOOL-140	2000	NICD	48-11-2100/2101
		TOOL-131	2400	NICD	SUPER HI-CAP
8	18V	TOOL-85	1500	NICD	STANDARD CAP
		TOOL-86	2000	NICD	48-11-2200
		TOOL-87	2500	NIMH	48-11-2230

Milwaukee is a federally registered trademark of Milwaukee Electric Tool Corporation.

POWER TOOL