

1MBH50D-060S

Molded IGBT

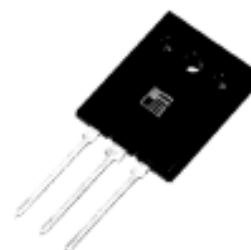
600V / 50A Molded Package

■ Features

- Small molded package
- Low power loss
- Soft switching with low switching surge and noise
- High reliability, high ruggedness (RBSOA, SCSOA etc.)
- Comprehensive line-up

■ Applications

- Inverter for Motor drive
- AC and DC Servo drive amplifier
- Uninterruptible power supply

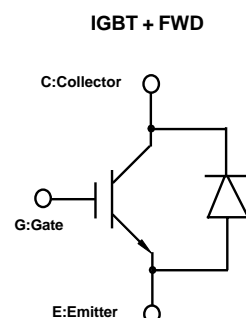


■ Maximum ratings and characteristics

● Absolute maximum ratings (Tc=25°C)

Item	Symbol	Rating	Unit		
Collector-Emitter voltage	V _{CEs}	600	V		
Gate-Emitter voltage	V _{GES}	±20	V		
Collector current	DC	T _c =25°C	I _{C25}	75	A
		T _c =100°C	I _{C100}	50	A
	1ms	T _c =25°C	I _{cp}	150	A
Max. power dissipation (IGBT)	P _c	230	W		
Max. power dissipation (FWD)	P _c	150	W		
Operating temperature	T _j	+150	°C		
Storage temperature	T _{stg}	-40 to +150	°C		
Screw torque	-	58.8 to 78.4	N·m		

■ Equivalent Circuit Schematic



● Electrical characteristics (at Tc=25°C unless otherwise specified)

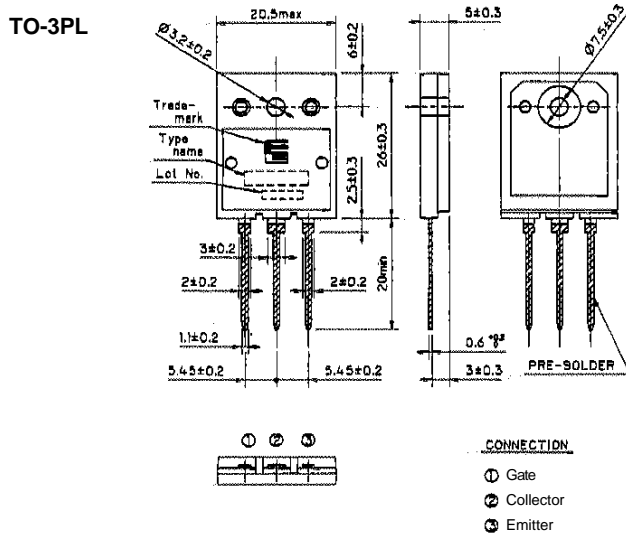
Item	Symbol	Characteristics			Conditions	Unit		
		Min.	Typ.	Max.				
Zero gate voltage collector current	I _{CEs}	-	-	1.0	V _{GE} =0V, V _{CE} =600V	mA		
Gate-Emitter leakage current	I _{GES}	-	-	10	V _{CE} =0V, V _{GE} =±20V	μA		
Gate-Emitter threshold voltage	V _{GE(th)}	4.0	5.0	6.0	V _{CE} =20V, I _C =50mA	V		
Collector-Emitter saturation voltage	V _{CE(sat)}	-	2.4	2.9	V _{GE} =15V, I _C =50A	V		
Input capacitance	C _{ies}	-	2500	-	V _{GE} =0V	pF		
Output capacitance	C _{oes}	-	240	-	V _{CE} =25V			
Reverse transfer capacitance	C _{res}	-	130	-	f=1MHz			
Switching Time	Turn-on time	t _{on} *	-	0.15	-	V _{CC} =300V, I _C =50A	μs	
		t _r *	-	0.09	-	V _{GE} =±15V		
		t _{rr2}	-	0.03	-	R _G =33 ohm		
	Turn-off time	t _{off}	-	0.50	0.62	(Half Bridge)		
		t _f	-	0.10	0.17	Inductance Load		
	Turn-on time	t _{on} *	-	0.15	-	V _{CC} =300V, I _C =50A		μs
		t _r *	-	0.09	-	V _{GE} =+15V		
		t _{rr2}	-	0.03	-	R _G =8 ohm		
Turn-off time	t _{off}	-	0.50	0.62	(Half Bridge)			
	t _f	-	0.10	0.17	Inductance Load			
FWD forward on voltage	V _F	-	2.0	2.5	I _F =50A, V _{GE} =0V	V		
Reverse recovery time	t _{rr}	-	0.06	0.10	I _F =50A, V _{GE} =-10V, V _R =300V, di/dt=100A/μs	μs		

*Turn-on characteristics include t_{rr2}. See a figure in next page.

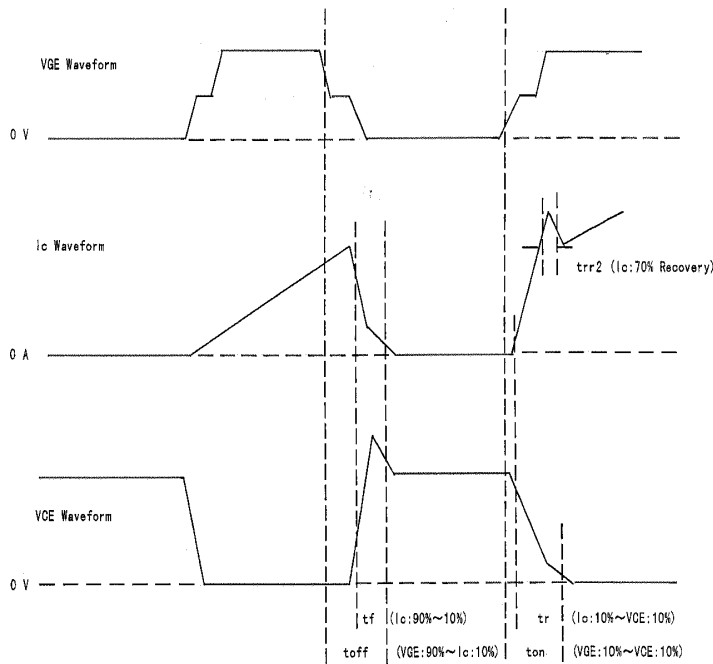
● Thermal resistance characteristics

Item	Symbol	Characteristics			Conditions	Unit
		Min.	Typ.	Max.		
Thermal resistance	R _{th(j-c)}	-	-	0.54	IGBT	°C/W
	R _{th(j-c)}	-	-	0.83	FWD	°C/W

■ Outline drawings, mm



■ Switching waveform (Inductance load)



■ Measurement circuit

