



5.7" HG2G Series Operator Interface

Features

- 5.7" STN LCD OI touchscreen
- 256 color or 15 level monochrome
- **New** Super bright LCD screens:
 - Monochrome: 500 cd/m²
 - Color: 350 cd/m²
- **New** Built-in ethernet port
- **New** Slim design: 36mm deep behind the panel
- **New** Analog resistive touch panel
- **New** Power LED indicator
- RS232, RS485 and RS422 compatible
- Large memory capacity: 2MB
- O/I Link communication (HG2G series only)
- Sub-host communication (IDEC/Modbus protocol only)
- 1:N PLC communication (IDEC/Modbus/AB Ethernet/IP/Koyo/Mitsubishi MELSEC-Q Ethernet)
- Supports major manufacturer PLCs: IDEC, Allen Bradley, Omron, Automation Direct (Koyo), Siemens, Mitsubishi & many more
- Approvals: UL 1604 listed for use in hazardous locations (Class 1 Div. 2), IP65, NEMA 13, CE
- Programming software: WindO/I-NV2 version 3.42 or higher



Specifications

General Specifications

Rated Power Voltage	24V DC
Power Voltage Range	20.4 to 28.8V DC
Power Consumption	10W max
Allowable Momentary Power Interruption	10ms max
Power Inrush Current	20A max
Operating Temperature	0 ~ 50°C
Operating Humidity	10 ~ 90% RH
Storage Temperature	-20 ~ +60°C
Storage Humidity	10 ~ 90% RH
Altitude or Atmospheric Pressure	0 ~ 2000m (operation) 0 ~ 3000m (transit)
Insulation Resistance	50MΩ and over (DC500V megger)
Vibration Resistance	5 to 9Hz amplitude 3.5mm, 9 ~ 150Hz acceleration 9.8m/s ² (10 times per axis on each of 3 mutually perpendicular axes) (100 minutes)
Shock Resistance	147m/s ² , 11ms (5 shocks on each of three mutually perpendicular axes)
Backlight Life	75,000 hours nominal and over
Mechanical Life of Touch Switch	1,000,000 operations and over
Safety Standard	UL508, UL1604, CSA C22.2 No.1010.1, No.213
EMC Standard	IEC/EN61131-2
Approval	UL, cUL CE Marking
Degree of Protection	IP65, NEMA 13
Weight	500g
Dimensions	167.2 (W) x 134.7 (H) x 40.9 (D) mm

Display Specifications

Display	5.7" STN color or monochrome LCD
User Memory	2MB (extended font included)
Backlight	Cold cathode tube
Display Resolution	320 (W) x 240 (H) (dots)
Display Brightness	Color: 350cd/m ² , Monochrome: 500 cd/m ²
Backlight Control	Auto off
Backlight Replacement	Not possible
LED Indicator	HG2G front face: power indicator (green)
Switch Type	Analog resistive membrane
Touch Switch Operating Force	0.2 ~ 0.8N
Ethernet Interface	IEEE802.3 (10/100BASE-T) compliant, RJ-45 connector
Serial Interface (1)	Detachable 9P terminal blocks
Serial Interface (2)	Mini DIN 8P connector
O/I Link Interface	Terminal block 3P
Installation Configuration	Panel cut-out dimensions: 153 (W) x 121 (H) mm Panel thickness: 1.6 ~ 5 mm

Function Specifications

Screen Types	Base screen, popup screen, system screen
Calendar	Year, month, day, hour, min., sec., day of week
Accuracy	Accuracy within ±60 seconds per month (at 25°C)
Backup Data	Calendar, log data, keep internal relay/register
Battery Life	4 years
Parts	Bit button, word button, goto screen button, print button, key button keypad, selector switch, potentiometer, numerical input, character input, pilot lamp, multi-state lamp, picture display, message display, message switching display, alarm list display, alarm log display, numerical display, bar graph, trend chart, pie chart, meter, calendar, bit write command, word write command, goto screen command, print command, screen script command, timer, operation log

Part Numbers & Dimensions on following page

Part Numbers

Operator Interface

Display Type	Communication Type	Ethernet Port	Body Color	Part Number
5.7" STN Monochrome LCD	RS232C/485/422 (9 Pin Terminal)	Yes	Light gray	HG2G-SB22TF-W
			Black	HG2G-SB22TF-B
			Silver	HG2G-SB22TF-S
		No	Light gray	HG2G-SB22VF-W
			Black	HG2G-SB22VF-B
			Silver	HG2G-SB22VF-S
5.7" STN 256 Color LCD	RS232C/485/422 (9 Pin Terminal)	Yes	Light gray	HG2G-SS22TF-W
			Black	HG2G-SS22TF-B
			Silver	HG2G-SS22TF-S
		No	Light gray	HG2G-SS22VF-W
			Black	HG2G-SS22VF-B
			Silver	HG2G-SS22VF-S

HG2G Series to IDEC PLC Communication Cable

IDEC PLC	Communication Type	Link Unit Used	Part Number
MicroSmart/ Pentra MicroSmart (FC5A/FC4A)	RS232	Built-in Port	HG9Z-AC102
		FC4A-PC1/HPC1	HG9Z-AC102
		FC5A-SIF2	Use shielded pair
	RS485	FC4A-PC2/HPC2	HG9Z-AC172
		FC4A-PC3/HPC3	Use shielded pair
		Ethernet	FC4A-SX5ES1E
OpenNet Controller	RS232	Built-in Port	HG9Z-AC162
	RS485	Built-in Port	Use shielded pair
	Ethernet	FC4A-SX5ES1E	CAT 5 ethernet* crossover cable

- * For 1:1 direct connection. If using a network hub, use CAT 5 straight cable.
- For other PLC manufacturers, refer to WindO/I-NV2 Users Manual.

Software & Programming Cable

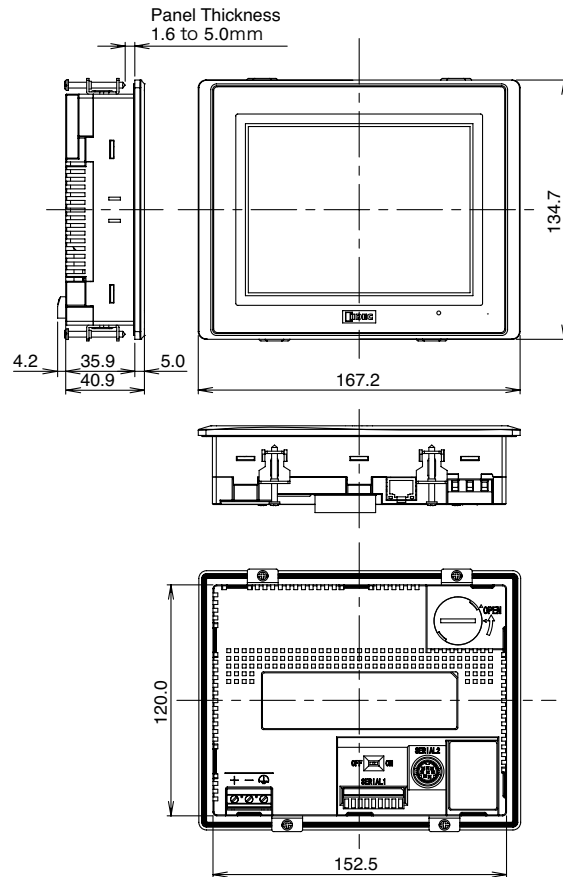
Description	Part Number
Software WindO/I-NV2 -Programming software for all IDEC OIs -PLC drivers are included with the software	HG9Y-ZSS2W
Cable Programming cable for HG2G Series (PC to HG2G Series)	HG9Z-XCM1A or FC2A-KC4C

Accessories

Accessory	Description	Part Number
Mounting Cut-out Adaptor	Mount HG2G in HG2F panel cutout	HG9Z-2A1*
	Mount HG2G in Proface panel cutout	HG9Z-2A2*
Protective Sheet	Protect display screen (min. qty 5 pcs.)	HG9Z-2D2
Mounting Clips	Replacement clips (min. qty 10 pcs.)	SLD-K02
Battery	Replacement Lithium Battery	HG9Z-XR1
Terminal Block	Replacement Terminal block for HG2G Host communication port	HG9Z-XT09
OI Link Unit	For O/I Link Communication (link HG2G Series only)	HG9Z-2G1

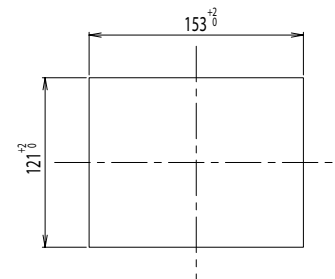
*Available fall 2009

Dimensions



Panel Cut-out*

All dimensions in mm.



*NOTE: Cut-out dimensions for HG2G are different than HG2F.



IDEC Corporation • 1175 Elko Drive • Sunnyvale, CA 94089 • 800-262-IDEC (4332) • Fax: 408-745-5258 • www.IDEC.com/usa

©2009 IDEC Corporation. All Rights Reserved. HG9Y-DS200-0 03/09