

---

**MULTI-FUNCTION MODULE FILTERS**



Primary Power Components Division

**[EMI Filter Cross Reference](#)**

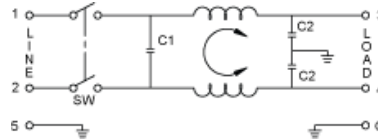
**[EMI Filter Inquiry Form](#)**

**RoHS  
Compliant**

---

### 860 Series General Purpose Filters with Switch

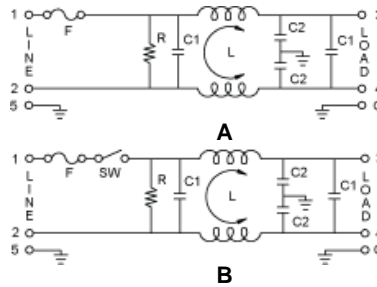
A compact filter with an IEC connector and single fuse holder (5 x 20) providing common and differential mode EMI suppression

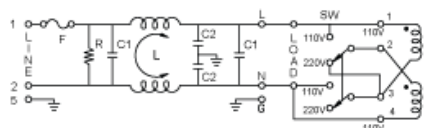


Part Number		Amp Rating	Size L x W x H
860-03/008		3	2.15 x 1.12 x 1.5
860-06/018		6	2.15 x 1.12 x 1.5
860-10/024		10	2.15 x 1.12 x 1.5

### 862 Series Multi-Function Module Filters

A multi-function power entry module filter that incorporates an IEC connector, a single fuse holder (5 x 20) with optional on/off switch, and voltage selector switch.



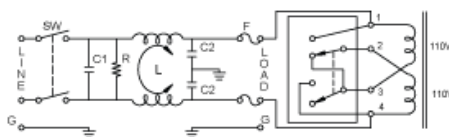


C

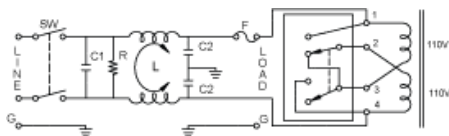
Part Number		Electrical Schematic	Amp Rating 115-250	Size L x W x H	IEC Conn	Fuse Holder	Power Switch	Voltage Selector
862-06/001		A	6	2.65 x 2.17 x 1.15	Yes	Yes	--	No
862-06/002		B	6	2.65 x 2.17 x 1.15	Yes	Yes	S P	No
862-06/003		B	6-4	2.65 x 2.17 x 1.15	Yes	Yes	D P	No
862-06/007		C	6	2.65 x 2.17 x 1.15	Yes	Yes	--	Yes

### 864 Series Multi-Function Module Filters

A multi-function power entry module filter that incorporates an IEC connector, double pole power switch, voltage selector switch, and optional single or double fuse holder (5 x 20 ) or (6.3 x 32) offering space savings.



A

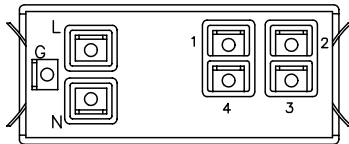
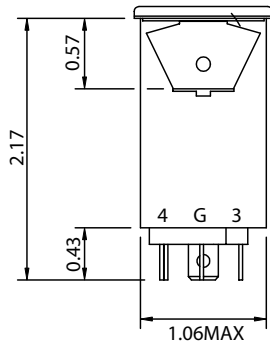
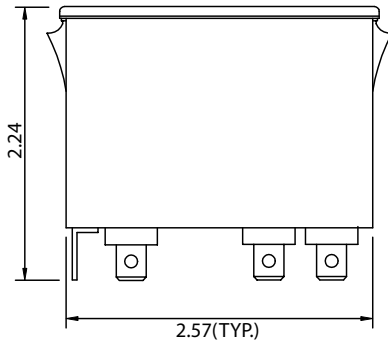
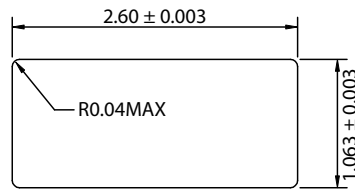
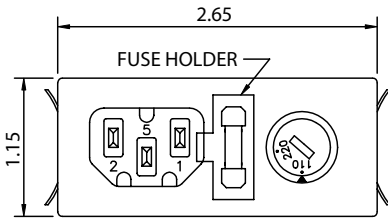


B

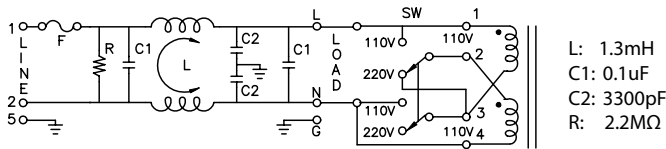
THESE DRAWINGS ARE THE PROPERTY OF QUALTEK ELECTRONICS AND NOT TO BE REPRODUCED FOR OR COMMUNICATED TO A THIRD PARTY WITHOUT THE EXPRESS WRITTEN PERMISSION OF AN OFFICER OF QUALTEK ELECTRONICS.

PHYSICAL DIMENSIONS:

\* SUGGESTED THICKNESS OF MOUNTING PANEL IS FROM 0.04 TO 0.07 INCH  
 \* SUGGEST MOUNTING CUTOUT



SCHEMATIC:



REVISION		
REV.	DESCRIPTION	APPROVED
B	RoHS Compliancy	DP

ELECTRICAL CHARACTERISTICS:

- 1-1. VOLTAGE RATING.....115/250VAC
- 1-2. CURRENT RATING  
 A. @ 115V VAC .....6 A RMS MAX  
 B. @ 250 VAC .....6 A RMS MAX
- 1-3. OPERATING FREQUENCY.....50/60Hz
- 1-4. LEAKAGE CURRENT: EACH LINE TO GROUND  
 A. @ 115 VAC 60Hz.....0.25 mA MAX  
 B. @ 250 VAC 50Hz.....0.45 mA MAX
- 1-5. HIPOT RATING (FOR ONE MINUTE)  
 A. LINE TO GROUND.....2250 VDC  
 B. LINE TO LINE.....1450 VDC
- 1-6. MINIMUM INSERTION LOSS IN dB: (AT 50 OHM SYSTEM)

FREQ. MHz	.01	.05	.10	.15	.50	1.0	5.0	10	30
COM. MODE db	/	/	15	16	25	30	42	45	40
DIF. MODE db	/	/	6	6	30	48	40	40	40

- 1-7. OPERATING TEMPERATURE.....-25° TO +85° C
- 1-8. SAFETY:
- 1-9. RoHS COMPLIANT

**CONTROLLED**

Dim range (mm)	Tolerance +/- (mm)	Qualtek Electronics Corp. PPC DIVISION	
		Part Number: 862-06/007	
0-1	0.15	Description: MULTI-FUNCTION MODULE FILTER	
1-6	0.20		
6-18	0.30	UNIT: in	
18-50	0.50		
50-120	0.70	Drawn / Date	
120-250	0.90	B.ZHANG	
250-500	1.20		