

Basic Rack PDU

Rack PDU, Basic, Zero U, 30A, 200/208V, (20)C13 & (4)C19



APC Basic Rack PDU , Input: 208V , Input Connections: NEMA L6-30P , Cord Length: 10 feet (3.05 meters) , Output: 200V, 208V , Output Connections: IEC 320 C13,IEC 320 C19

Includes: Installation guide, Rack Mounting brackets, Toolless Mounting Kit

Standard Lead Time: Usually in Stock



AP7541 Features

Toolless Mounting Capabilities	Units do not require additional tools to mount into APC NetShelter VX, which allows the users to quickly and easily mount units in the rear of the enclosure.
Vertical Mounting Capabilities	Easily mounts vertically in racks or enclosures and occupies zero U of valuable rack space, which allows more equipment in the rack. Units that mount vertically are optimized to fit in a NetShelter VX enclosures.
Resettable circuit breakers	Enables a quick recovery from overload events.

Basic Rack PDU Features & Benefits

Agility	
Rack-Mountable	Includes horizontal, vertical, and toolless-mount varieties. Puts power where it is needed most - in the racks near the equipment.
Single input power source	Supply power from one branch whip to multiple pieces of equipment, conveniently powering rack-mount equipment. Saves time and money during installation by using one branch whip and standard connections.
Wide range of input and output connections	Product family includes a variety of input and output connections to distribute 120V, 208V, or 230V power to multiple outlets. Having a variety of inputs and outputs allow users to adapt to varying power requirements. APC offers units that bring up to 14.4kW using a single branch whip.
Total Cost of Ownership	
Low Cost Power Distribution	Provides a number of outlets to bring power to rack equipment at an affordable price.

Output

Nominal Output Voltage	200V,208V
Maximum Total Current Draw per Phase	24A
Output Connections	(20) IEC 320 C13 (4) IEC 320 C19
Overload Protection	Yes



Input

Nominal Input Voltage	208V
Input Frequency	50/60 Hz
Regulatory Derated Input Current (North America)	24A
Input Connections	NEMA L6-30P
Cord Length	3.05 meters
Number of Power Cords	1
Maximum Input Current per phase	30A
Load Capacity	4992 VA



Physical

Net Weight	5.57 KG
Maximum Height	1619.00 mm
Maximum Width	56.00 mm
Maximum Depth	44.00 mm
Shipping Weight	6.48 KG
Shipping Height	2134.00 mm
Shipping Width	152.00 mm
Shipping Depth	127.00 mm
Color	Black

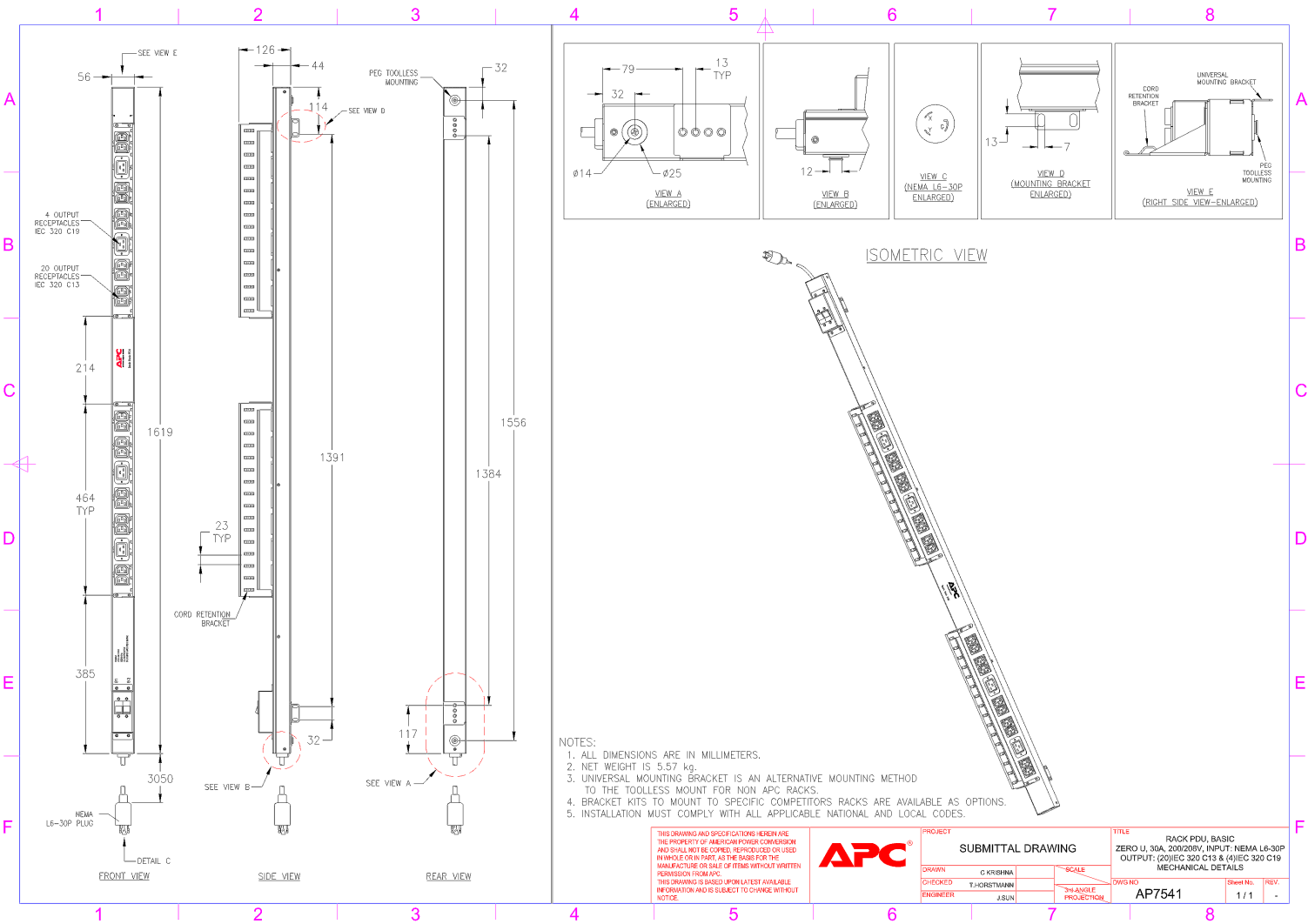
Environmental

Operating Environment	0 - 45 °C
Operating Relative Humidity	0%

Operating Elevation	0-3000 meters
Storage Temperature	-25 - 65 °C
Storage Relative Humidity	0%
Storage Elevation	0-15000 meters

Conformance

Regulatory Approvals	cUL Listed,CSA C22.2 No. 60950-1-03,METI Denan,UL 60950-1,UL Listed
Standard Warranty	2 years repair or replace
ROHS/WEEE Compliance	RoHS 7b Exemption





Basic Rack PDU

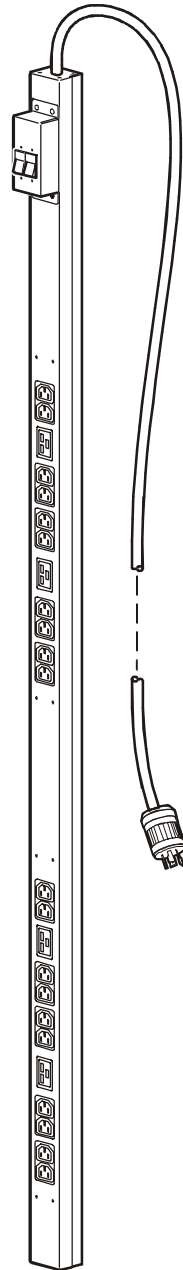
Overview

The American Power Conversion® Basic Rack PDU distributes power to devices in the rack.

Outlets. The Rack PDU has twenty IEC-320-C13 outlets, and four IEC-320-C19 outlets.

Power cord. The 10-foot (3.05-meter) power cord terminates with a NEMA L6-30 connector.

AP7541



Specifications for AP7541

Electrical

Input connector	NEMA L6-30 plug
Output connectors	20 – IEC-320-C13, 4 – IEC 320-C19 outlets
Nominal input voltage	200 – 240 VAC
Acceptable input voltage	± 10% of normal voltage
Input frequency	47– 63 Hz

Physical

Size (H × W × D)	63.75 × 2.19 × 1.73 in (161.92 × 5.56 × 4.39 cm)
Shipping Dimensions (H × W × D)	84.00 × 6.00 × 5.00 in (213.36 × 15.24 × 12.7 cm)
Weight	12.25 lb (5.56 kg)
Shipping weight	14.25 lb (6.46 kg)

Environmental

Elevation (above MSL)	
Operating	0 – 15,000 ft (0 – 4500 m)
Storage	0 – 50,000 ft (0 – 15 000 m)
Temperature	
Operating	–5 to 45° C (23 to 115° F)
Storage	–25 to 65° C (–13 to 149° F)
Humidity	
Operating	5 – 95% RH non-condensing
Storage	5 – 95% RH non-condensing

Compliance

Safety verification	UL, cUL 60950
---------------------	---------------

990-1894

