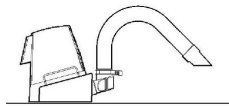


## Systems Configurations

### BVX-100 Series Fume Extraction

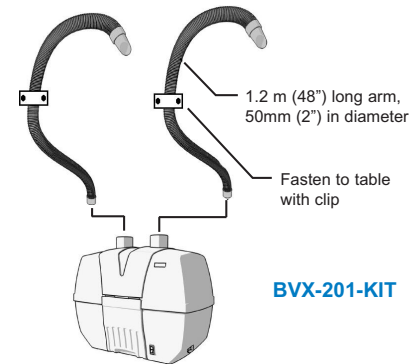


**BVX-101**  
On bench with  
exhaust Arm

#### Other possible configurations:

- On bench with plenum (BVX-101S)
- On shelf with Arm & inverted adapter (BVX-IADT)
- With under bench bracket (BVX-BCK)
- On the floor with flexible Arm kit (BVX-ARM-K1)

### BVX-200 Series Fume Extraction



**BVX-201-KIT**

#### Other possible configurations:

- BVX-200 with flexible hoses (BVX-Arm-K1) & BVX Arms. The flexible hoses offer greater spacing between arms. For longer hoses you can order individual components ([www.okinternational.com/product\\_fume\\_bvx/bvx\\_200](http://www.okinternational.com/product_fume_bvx/bvx_200))
- BVX-200 with flexible hoses & Omniflex Arms



EA1122

EA1124

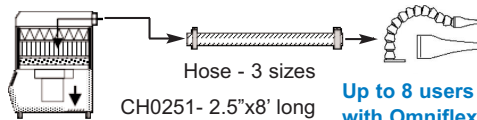
EA1126

## Systems Configurations

### MFX-2200 Series Fume Extraction

#### Pre/HEPA/Gas with Exhaust Arms

MFX-2200C-A or MFX-2200C-D



Hose - 3 sizes

CH0251- 2.5"x8' long  
CH0251- 2.5"x8' long  
CH0251- 2.5"x8' long

Up to 8 users  
with Omniflex  
Arm EA1124  
tapered nozzle

#### Other possible configurations:

- Up to 4 users with Omniflex Arm EA1122 rectangular nozzle & EA1126 large hood per unit
- Up to 8 users with **BVX-ARM** per unit (BVX-ARM-K2: BVX Arm ESD with nozzle, mounting plate and C-Clamps)

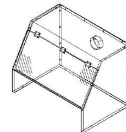
All Arms are supplied with mounting bracket and two C-Clamps.

#### Pre/Gas with Exhaust Cabinet / ExhaustArms

MFX-2200G-A or MFX-2200G-D

#### Recommended unit capacity

- 2 Cabinets (EC1500)
- or 1 Cabinet and 2 exhaust Arms
- or 4 exhaust Arms



BTX-FXP-G-06

### BTX-208 Tip Extraction Duct Layout

The BTX-208 can provide fume extraction for up to 8 stations. Select a duct connection kit based on the number of stations, the layout and the length of ducting.

#### Connection Kits:

- BTX-CK2-25 - For 2-4 stations with 2.5m (8') long hose
- BTX-CK4-50 - For 4-8 stations with 5m (16') long hose
- BTX-CK4-75 - For 4-8 stations with 7.5m (25') long hose

Contact us for a free configuration & ducting layout. For more information download our Fume Extraction planning guide [www.okinternational.com/literature\\_fume/data\\_sheets](http://www.okinternational.com/literature_fume/data_sheets)



## Fume Extraction Product Guide

### Single & Multi Users



# Which System Should I Buy?

## VOLUME EXTRACTION

PARTICULATE

GAS

REPLACEMENT FILTERS

### BVX-100 Series

SINGLE USER

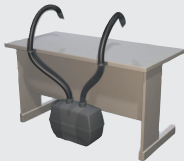
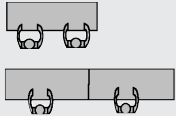


- BVX-101 - Bench-Top Arm System
- BVX-101S - Bench-Top Plenum System
- BVX-103 - Bench-Top Arm System
- BVX-103S - Bench-Top Plenum System

**FP-BVX**  
Pre-filter  
**FM-BVX**  
Main Filter (Combined HEPA/Gas)  
**FG-BVX**  
Deep Bed Gas

### BVX-200 Series

TWO USERS

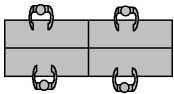


- BVX-201-KIT - Filter unit with 2 flexible arms, 1.2m long
- BVX-201 - Filter unit only for 2 stations (arm not included)
- BVX-203 - Filter unit for 2 stations

**FP-BVX200**  
Pre-filter  
**FM-BVX200**  
Main Filter HEPA Carbon  
**FG-BVX200**  
Deep Bed Gas Filter

### MFX-2200 Series

MULTI USERS  
up to 8



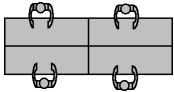
- MFX-2200C-A - Particle Fume Extraction System with analog control
- MFX-2200C-D - Particle Fume Extraction System with digital control
- MFX-2200G-A - Gas Fume Extraction System with analog control
- MFX-2200G-D - Gas Fume Extraction System with digital control

**FIL22P030** for **MFX-2200C**  
Pre-filter Pleated 60% efficiency  
**FIL22H070** for **MFX-2200C**  
Combination Filter HEPA/Carbon  
**FIL22P040** for **MFX-2200G**  
Pre-filter Pleated 85% efficiency  
**FIL22H010** for **MFX-2200G**  
Gas Filter Cartridge 11Kg (25lbs)  
**FIL22H020** for **MFX-2200G**  
Carbon Refill Kit 11Kg 25lbs)

## TIP EXTRACTION

### BTX-200 Series

MULTI USERS  
up to 8



- BTX-208 - Filter Unit for 8 Tip Extraction Stations
- Not Applicable

Full range of Connection Kits and Tip Extraction Iron Adapter Kit available at [www.okinternational.com/product\\_fume/btx\\_208](http://www.okinternational.com/product_fume/btx_208)

**NEW RELEASE : Universal Iron Adapter Clip - BTX-UC01**

**FP-BVX200**  
Pre-filter  
**FM-BVX200**  
Main Filter HEPA Carbon