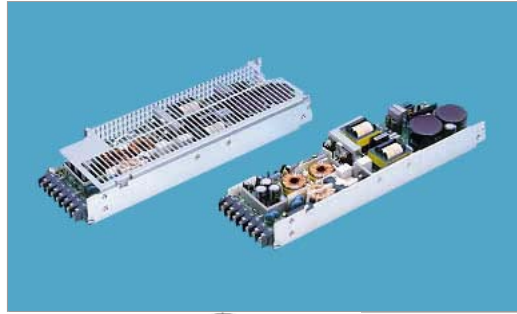


[Home](#) > Product Details

UAW250S



Features

- Autoranging input
- UL recognized, TV approved, CSA certified
- Built-in Inrush Current Protection
- Remote sensing
- Parallel and Master-Slave operation
- Thin profile
- Built-in Over Current Protection
- Built-in Over Voltage Protection
- RoHS Compliant

Safety Agency Approvals

UL1950, CSA C22.2 No.234, EN60950, VDE0160

EMI Compliance

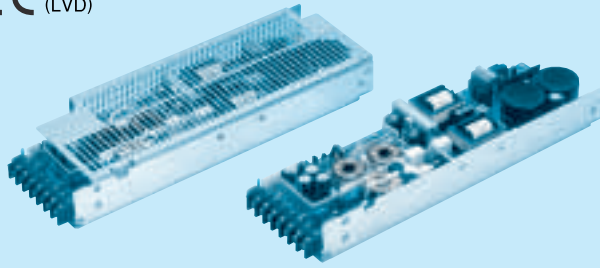
- FCC-B
- CISPR22-B
- EN55022-B
- VCCI-B

3 year warranty(refer to Instruction Manual)

| Model | Input Voltage [V] | Output Wattage [W] | DC Output [V/A] |
|------------|-------------------|--------------------|-----------------|
| UAW250S-3 | AC 85 - 264 | 150 | 3V 50A |
| UAW250S-5 | AC 85 - 264 | 250 | 5V 50A |
| UAW250S-12 | AC 85 - 264 | 258 | 12V 21.5A |
| UAW250S-24 | AC 85 - 264 | 264 | 24V 11A |
| UAW250S-48 | AC 85 - 264 | 249.6 | 48V 5.2A |



RoHS



- ① Series name
- ② Autoranging input
- ③ Output wattage
- ④ Single output
- ⑤ Output voltage
- ⑥ Optional
- C :with Coating
- G :Low leakage current
- N :with Cover
- R :with Remote ON/OFF

UAW

Please refer to derating curve, because the rated load current depends on cooling method that is convention cooling or forced air.

| MODEL | UAW250S-3 | UAW250S-5 | UAW250S-12 | UAW250S-24 | UAW250S-48 |
|-----------------------|-----------|-----------|------------|------------|------------|
| MAX OUTPUT WATTAGE[W] | 150 | 250 | 258 | 264 | 249.6 |
| DC OUTPUT | 3V 50A | 5V 50A | 12V 21.5A | 24V 11A | 48V 5.2A |

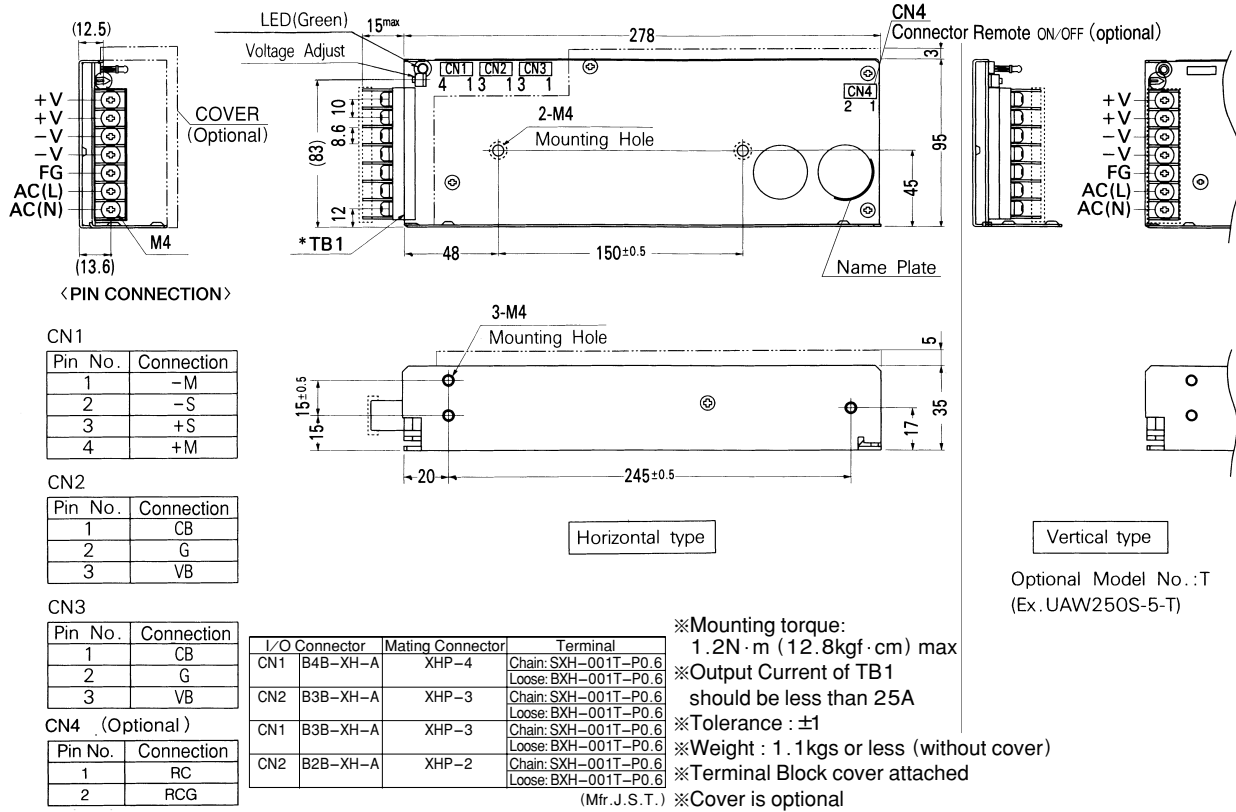
SPECIFICATIONS

| | MODEL | UAW250S-3 | UAW250S-5 | UAW250S-12 | UAW250S-24 | UAW250S-48 | |
|------------------------------------|--|--|--|------------|------------|------------|--------|
| INPUT | VOLTAGE[V] | AC85 - 132 / 170 - 264 1 φ (Auto-selectable) | | | | | |
| | CURRENT[A] | ACIN 100V | 6typ (Io=100%) | | | | |
| | | ACIN 200V | 3typ (Io=100%) | | | | |
| | FREQUENCY[Hz] | 50/60 (47 - 63) | | | | | |
| | EFFICIENCY[%] | 70typ | | 77typ | 80typ | 83typ | 83typ |
| | INRUSH CURRENT[A] | ACIN 100V | 15/40typ (Io=100%) (Primary Surge Current/Secondary Surge Current) | | | | |
| | | ACIN 200V | 30/40typ (Io=100%) (Primary Surge Current/Secondary Surge Current) | | | | |
| LEAKAGE CURRENT[ma] | 0.75max (60Hz, According to UL, CSA and VDE) | | | | | | |
| OUTPUT | VOLTAGE[V] | 3 | 5 | 12 | 24 | 48 | |
| | CURRENT[A] | 50 | 50 | 21.5 | 11 | 5.2 | |
| | LINE REGULATION[mV] | 40max | 40max | 80max | 100max | 192max | |
| | LOAD REGULATION[mV] | 80max | 80max | 120max | 160max | 300max | |
| | RIPPLE[mVp-p] | 0 to +50°C *1 | 80max | 80max | 120max | 120max | 150max |
| | | -10 - 0°C *1 | 120max | 120max | 150max | 150max | 200max |
| | RIPPLE NOISE[mVp-p] | 0 to +50°C *1 | 120max | 120max | 150max | 150max | 350max |
| | | -10 - 0°C *1 | 180max | 180max | 200max | 200max | 400max |
| | TEMPERATURE REGULATION[mV] | 40max | 50max | 120max | 240max | 480max | |
| | DRIFT[mV] | *2 | 12max | 20max | 48max | 96max | 192max |
| | START-UP TIME[ms] | 800max (ACIN 85/170V, Io=100%) | | | | | |
| HOLD-UP TIME[ms] | 10typ (ACIN 85/170V, Io=100%) 20typ (ACIN 100/200V, Io=100%) | | | | | | |
| OUTPUT VOLTAGE ADJUSTMENT RANGE[V] | 2.85 - 3.6 | | +10%, -5% | | | | |
| PROTECTION CIRCUIT AND OTHERS | OVERCURRENT PROTECTION | Works over 105% of rating and recovers automatically | | | | | |
| | OVERVOLTAGE PROTECTION | 4.00 - 5.25V | Works at 115 - 140% of rating | | | | |
| | OPERATING INDICATION | LED (Green) | | | | | |
| | REMOTE SENSING | Provided | | | | | |
| ISOLATION | INPUT-OUTPUT | AC3,000V 1minute, Cutoff current = 25mA, DC500V 50MΩ min (At Room Temperature) | | | | | |
| | INPUT-FG | AC2,000V 1minute, Cutoff current = 25mA, DC500V 50MΩ min (At Room Temperature) | | | | | |
| | OUTPUT-FG | AC500V 1minute, Cutoff current = 100mA, DC500V 50MΩ min (At Room Temperature) | | | | | |
| ENVIRONMENT | OPERATING TEMP., HUMID. AND ALTITUDE | -10 to +55°C, 10 - 90%RH (Non condensing) (Refer to DERATING CURVE), 3,000m (10,000feet) max | | | | | |
| | STORAGE TEMP., HUMID. AND ALTITUDE | -20 to +75°C, 10 - 90%RH (Non condensing), 9,000m (30,000feet) max | | | | | |
| | VIBRATION | 10 - 55Hz, 19.6m/s ² (2G), 3minutes period, 60minutes each along X, Y and Z axis | | | | | |
| | IMPACT | 196.1m/s ² (20G), 11ms, once each X, Y and Z axis | | | | | |
| SAFETY AND NOISE REGULATIONS | AGENCY APPROVALS | UL60950-1, CSA C22.2 No.234, EN60950-1, EN50178 Complies with IEC60950-1 | | | | | |
| | CONDUCTED NOISE | Complies with FCC-B, CISPR22-B, EN55022-B, VCCI-B | | | | | |
| OTHERS | CASE SIZE/WEIGHT | 95 × 35 × 278mm (without terminal block) (W × H × D) /1.1kg max (without cover) | | | | | |
| | COOLING METHOD | Convection/Forced air | | | | | |

*1 Measured by 20MHz oscilloscope or Ripple-Noise meter (equivalent to KEISOKU-GIKEN:RM101).

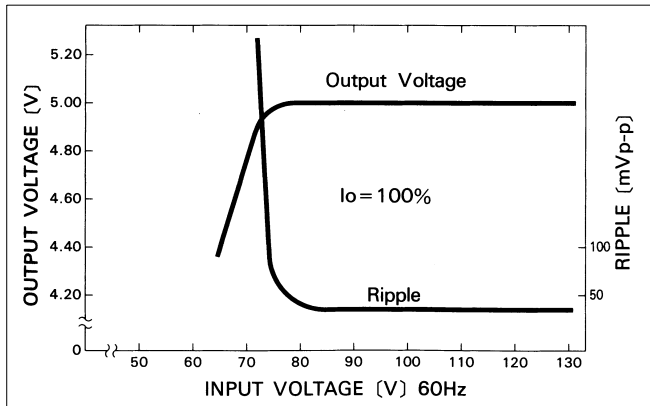
*2 Drift is the change in DC output for an eight hour period after a half-hour warm-up at 25°C, with the input voltage held constant at the rated input/output.

External view

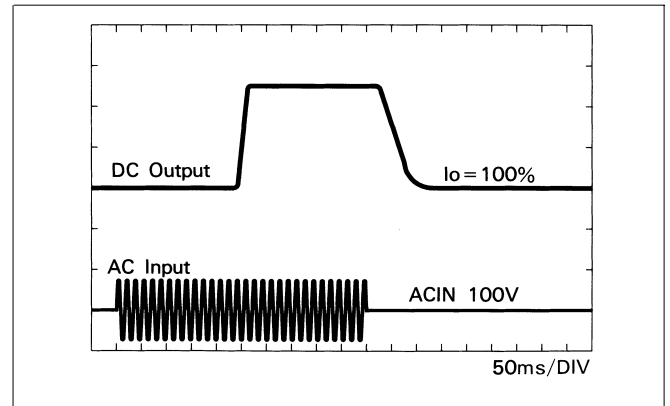


Performance data

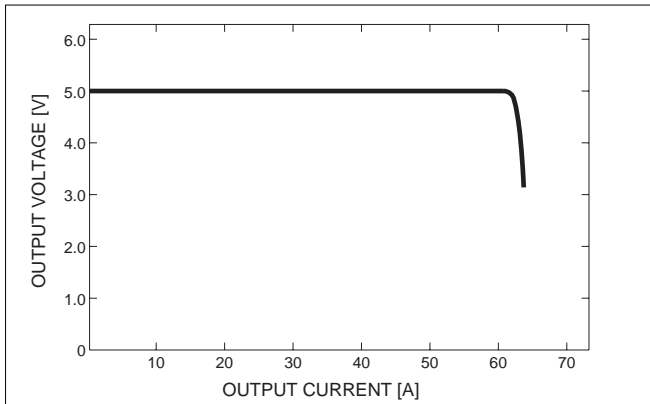
■ STATIC CHARACTERISTICS (UAW250S-5)



■ RISE TIME & FALL TIME (UAW250S-5)



■ OVERCURRENT CHARACTERISTICS (UAW250S-5)



■ DERATING CURVE

