



VOLEX

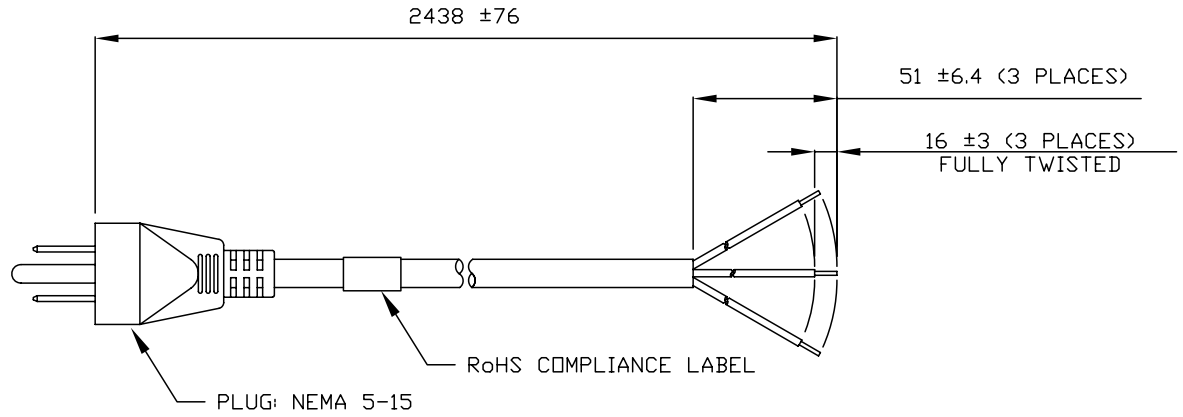
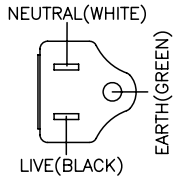
GROUP

## Standard Cord Details: 17408 10 B1



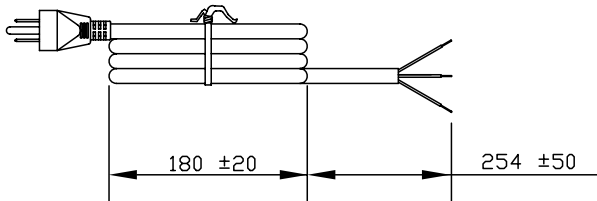
### Specifications

<b>Certifications</b>	
<b>Part Number</b>	17408 10 B1
<b>Connector Type</b>	none
<b>Plug Type</b>	5-15P
<b>Category</b>	Rubber
<b>Application</b>	Non-Detachable
<b>Plug Catalog No.</b>	
<b>Connector Catalog No.</b>	
<b>Cable</b>	SJ AWG 18x3
<b>Jacket Color</b>	black
<b>Length in Feet</b>	8'
<b>Length in Meters</b>	2.44
<b>Temperature Rating</b>	60 C
<b>Packaging Units Per Carton</b>	B-50,S-25
<b>Color Coding</b>	North America
<b>Nominal OD in Inches</b>	0.315
<b>Nominal OD in Millimeters</b>	8
<b>Notes</b>	See 17406 for 6ft version. See 17238 for SV version. See 17409 for SJO version. See 17308 for cord holder plug version. See 40407 for SJT (plastic) version.



VOLEX RESERVES THE RIGHT TO ALTER NON-CRITICAL DIMENSIONS WITHOUT NOTICE.

PACKAGING: FOLD & TIE



**NOTES**

- 1) CORDAGE: 18/3 SJ, 60°C, BLACK
- 2) APPROVALS:
- 3) RATING: 10 AMP/125 VOLTS
- 4) FLAME RATING: FT2
- 5) PACKAGING: 50 PIECES/CARTON
- 6) ALL DIMENSIONS IN MILLIMETERS.

REV	DESCRIPTION	DATE
3	REDRAWN TO SHOW CHINESE MANUFACTURED CORD	12/3/07
2	FORMAT UPDATE	08/20/04
1	C.U.D - NEW RELEASE	06/11/04

 FORM IN71-07 REV.A	<input checked="" type="checkbox"/> Indianapolis, IN <input type="checkbox"/> Conover, N.C. <input type="checkbox"/> Freemont, CA <input type="checkbox"/> Aguascalientes, MX <input type="checkbox"/> Tijuana, Mexico <input type="checkbox"/> Hermosillo, MX <input type="checkbox"/> Clinton, AR <input type="checkbox"/> Kanata, Canada	<b>Proprietary Notice:</b> This document is the property of Volex Incorporated. The information contained herein is not to be disclosed to anyone without the express written consent of Volex Inc.	<b>MATERIAL:</b> PLUG: PVC, BLACK JACKET: PVC, BLACK  <b>FINISH:</b> JACKET: SMOOTH	<b>SCALE:</b> NOT TO SCALE  <b>ECD:</b> N/A	<b>ITEM DESCRIPTION</b> CORDSET - NORTH AMERICAN POWER SUPPLY CORD (8')		
	<b>TOLERANCE UNLESS OTHERWISE SPECIFIED</b> .XXX ± .005 .XX ± .02 .X ± .03 FRACT. ± 1/32 ANGULAR ± 1/2°		<b>APPROVED</b> STC	<b>DRAWN BY</b> ARK	<b>DATE</b> 06/11/04	<b>PART NO.</b> 17408 10 B1	