

Free eNewsletter

Enter your E-mail



**Shop By Type**

- Cable Assemblies
- Adapters
- Connectors
- Rack Panels
- Bulk Cable
- Tools
- Switch Boxes
- Network Cards
- Hubs & Switches
- Converters & Transceivers
- KVM Switches
- Antennas

- Overstock/Sale Items
- Top 10 Products

**Shop By Category**

- IEEE-488 GPIB
- Coaxial
- Monitor, Video
- Fiber Optic
- D-Subminiature
- Modular
- USB, DIN, Firewire, SCSI, and Others
- Wireless Infrastructure
- Weatherproof Enclosures
- Networking and Other Equipment

**Product Wizards**

- Cable Assemblies
- Adapters
- Connectors
- Rack Panels
- Tools
- Switch Boxes
- Network Cards
- Hubs or Switches
- Ethernet Converters
- KVM Switches

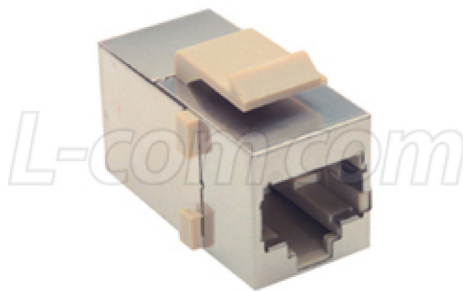
**Technical Resources**

- FAQs
- Connector Chart
- Glossary
- Tutorials
- Tips and Videos
- White Papers
- Catalog Downloads
- eNewsletter Archive

You Are Here: [Home](#) > [Modular](#) > [Adapters, Couplers, Splitters](#) > [Modular Couplers](#) > [TDG1026K](#) > **TDG1026KS-8P**

## Category 3 Shielded RJ45 (8x8) Keystone Feed-thru Coupler

An exclusive from L-com is our extensive offering of network grade couplers for Ethernet applications. Featuring an industry standard Keystone-Mount design, these couplers can be installed into typical panels and wall plate openings. For maximum protection from EMI/RFI choose the shielded versions which feature a stamped metal shell. These couplers are engineered to bring high performance in a compact design. Contact us for aggressive pricing for your larger projects.



**Features for this Modular product**

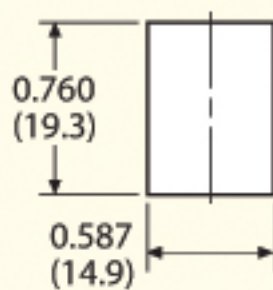
- High Performance Ethernet Coupler for panel and wall plate mounting
- Keystone Style Snap in mounting design for compatibility with common wall plates and rack panels
- Fully shielded housing options reduce EMI/RFI interference
- EIA568A/B dual wiring provides compatibility in every installation
- Available in Category 3, 5E, and 6 in shielded or non-shielded versions

**Details for this Modular product**

L-com Item #	TDG1026KS-8P
Manufacturer	L-com
ASIN # <a href="#">(More)</a>	B000AAJ9CA
UPC # <a href="#">(More)</a>	822335036079
RoHS Status	<a href="#">RoHS Compliant</a> <a href="#">(More)</a>

- [Diagram](#)
- [Tip](#)
- [Video Clip](#)
- [Catalog Page](#)
- [Catalog Page](#)
- [2D Drawing \(.pdf\)](#)
- [3D CAD Model \(.step\)](#)

# TDG1026K PANEL OPENING



# Category 3, 5E and 6 Keystone Couplers and Panels

Item #	Description	Color	1-9	10-24	25-99	100-249	250-499
--------	-------------	-------	-----	-------	-------	---------	---------

## **RoHS Compliant** RJ45 (8x8) Keystone Feed-thru Couplers - Shielded Category 3, 5E and 6

These couplers utilize two RJ45 (8x8) modular jacks and fit into a standard Keystone style opening. A slim housing design permits high density mounting. Couplers listed include Category 3, 5E and 6 performance ratings in both Shielded and Unshielded versions. Connector housings enclosed within a fully stamped shielding. Designed to work with EIA/TIA 568A and B wiring.

<a href="#">TDG1026KC3</a>	Category 3 Unshielded RJ45 (8x8) Keystone Feed-thru Coupler
<a href="#">TDG1026KS-8P</a>	Category 3 Shielded RJ45 (8x8) Keystone Feed-thru Coupler
<a href="#">TDG1026KC5</a>	Category 5E Unshielded RJ45 (8x8) Keystone Feed-thru Coupler
<a href="#">TDG1026KS-C5E</a>	Category 5E Shielded RJ45 (8x8) Keystone Feed-thru Coupler
<a href="#">TDG1026KC6</a>	Category 6 Unshielded RJ45 (8x8) Keystone Feed-thru Coupler
<a href="#">TDG1026KS-C6</a>	Category 6 Shielded RJ45 (8x8) Keystone Feed-thru Coupler

**TIP:** *How to panel mount a keystone style connector*

Keystone style refers to the snap-in mounting mechanism that many manufacturers have adopted. Unfortunately, this is not based on an agreed upon standard. As with any de facto standard, slight variations in size exist between various manufacturers' products. The recommended panel openings and maximum panel thickness are best fit values that were chosen with variations taken into consideration.

Video clip at  
[www.L-com.com/videos/A10](http://www.L-com.com/videos/A10)

**STEP 1**

Align connector in proper orientation to the opening.

**STEP 2**

1 Seat bottom retainer  
2 Pivot connector upward  
3 Depress top retainer and snap connector in place.

Seat bottom retainer and pivot connector upward while depressing upper retainer.

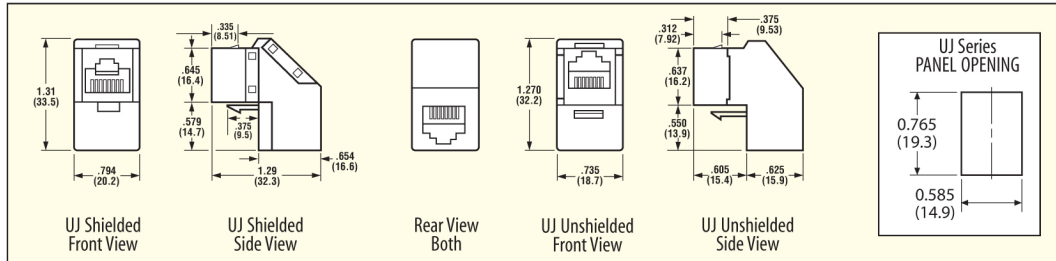
**STEP 3**

Connector fully seated.

## **RoHS Compliant** Premium Keystone Style RJ45 (8x8) Feed-Thru Modular Couplers - Category 5E Rated

Two Category 5E feed-thru modular couplers are available for mating EIA568 A or B Category 5 connections. Couplers come in shielded and unshielded versions, the unique offset design maintains Category 5E performance and limits depth to only 1.25". Designed to mate with keystone style holes. Color: Black or Silver.

<a href="#">UJ5T568</a>	Modular Coupler, Cat. 5E RJ45 (8x8), Unshielded	Black
<a href="#">UJ5T568S</a>	Modular Coupler, Cat. 5E RJ45 (8x8), Shielded	Silver



## **RoHS Compliant** Premium Keystone Style - 16 and 32 Port Feed-Thru Modular Panels, Category 5E Rated

[UJ5T568](#) rack panels utilize the UJ5T568 and UJ5T568S couplers. 16 and 32 port versions available in shielded and unshielded configurations. Category 5E rated. Color: Black.

<a href="#">PR175UT568</a>	1.75" 16 Port Cat. 5E Feed-Thru Panel, Unshielded	Black
<a href="#">PR175UT568S</a>	1.75" 16 Port Cat. 5E Feed-Thru Panel, Shielded	Black
<a href="#">PR35UT568</a>	3.50" 32 Port Cat. 5E Feed-Thru Panel, Unshielded	Black
<a href="#">PR35UT568S</a>	3.50" 32 Port Cat. 5E Feed-Thru Panel, Shielded	Black

## **RoHS Compliant** Keystone Style - 16 and 32 Port Feed-Thru Modular Panels - Category 6 Rated

[TDG1026KC6](#) utilizes the TDG1026KC6 or TDG1026KS-C6 Category 6 couplers. 16 and 32 port versions are available in shielded and unshielded configurations. Color: Black.

<a href="#">PR175C6-16</a>	1.75" 16 Port Cat. 6 Feed-Thru Panel, Unshielded	Black
<a href="#">PR175C6-16S</a>	1.75" 16 Port Cat. 6 Feed-Thru Panel, Shielded	Black
<a href="#">PR35C6-32</a>	3.50" 32 Port Cat. 6 Feed-Thru Panel, Unshielded	Black
<a href="#">PR35C6-32S</a>	3.50" 32 Port Cat. 6 Feed-Thru Panel, Shielded	Black

### How Rack Spaces and Sizes are Measured

1 Rack Space = 1.75 in  
2 Rack Spaces = 3.5 in

Racks are a great way to neaten up wiring closets and labs. Network equipment and rack panels usually come in 1.75", 3.5" and 5.25" heights. (1, 2 and 3 rack spaces).

