



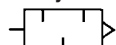
Silencer Standard Type Series AN□00

How to Order

Over 30 dB (A) noise reduction
Low back pressure
Compact and easy mounting



JIS Symbol



AN 400 □ 04

Body size

200
300
400
500
600
700
800
900

Thread type

Nil	R
N	NPT

Port size

02	1/4
03	3/8
04	1/2
06	3/4
10	1
12	1 1/4
14	1 1/2
20	2

Specifications

Fluid	Compressed air
Max. operating pressure (1)	1.0 MPa
Noise reduction	30 dB (A)
Ambient and fluid temperature	5 to 60°C (2)



Note 1) It indicates the inlet pressure for solenoid valve.

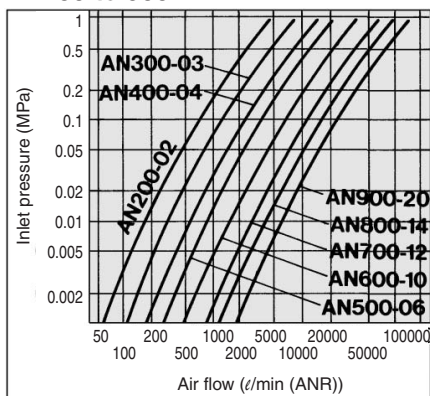
Note 2) It can operate in temperature between -10 to 60°C if there is no risk of the moisture in the air freezing.



Refer to page 5-10-13 for Precautions on these products.

Flow Characteristics (Initial conditions)

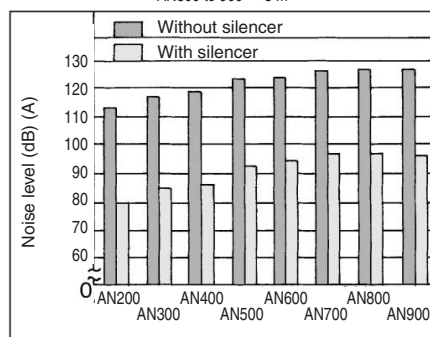
AN200 to 900



Noise Level (Initial conditions)

AN200 to 900

Condition: 0.5 MPa at inlet pressure of solenoid valve
Measurement distance: AN200 to 500 → 1 m, AN600 to 700 → 2 m,
AN800 to 900 → 3 m

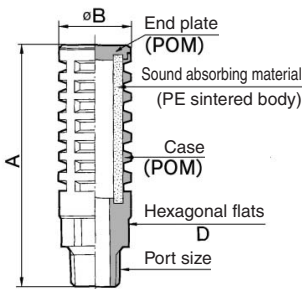


Model

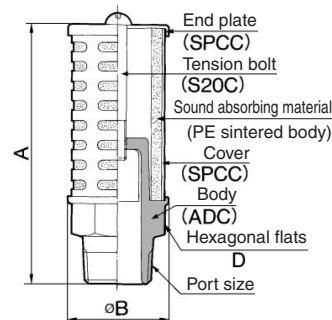
Model	Port size R	Effective area (mm ²)	Recommended flow (m ³ /min (ANR))	Weight (g)	Dimensions (mm)		
					A	B	D
AN200-02	1/4	35	3 or less	17	63	22	19
AN300-03	3/8	60	5 or less	25	84	25	22
AN400-04	1/2	90	8 or less	35	92	30	27
AN500-06	3/4	160	12 or less	165	107	46	36
AN600-10	1	270	20 or less	225	132	50	41
AN700-12	1 1/4	440	30 or less	490	200	74	55
AN800-14	1 1/2	590	50 or less	580	233	74	60
AN900-20	2	960	80 or less	820	263	86	70

Construction/Parts/Dimensions

AN200 to 400



AN500 to 900



Note 1) About the display of product's material

POM: Polyacetal
PE: Polyethylene
SPCC: Carbon steel
S20C: Carbon steel
ADC: Aluminum alloy

Note 2) Recommended flow rate is the flow at 0.5 MPa in the inlet pressure.