

[Home](#) - [Products](#) - [Technical Data](#) - [Reps/Distr.](#) - [Contact Us](#)

## HIGH DENSITY - CRIMP CONNECTORS - DC3 SERIES

### SPECIFICATIONS:

#### MECHANICAL:

Shell: steel

Finish: tin plated

Insulator: glass filled PBT UL94V0

#### ELECTRICAL:

Current Rating: 3 amps max.

Voltage Rating: 250 vac

Insulation Resistance: 3000 meg ohm min @ 500 vdc

Contact Resistance: <15 milli ohms (mated)

Temperature Range: -55° TO +105° C

#### Available Sizes:

Male: 15, 26, 44, 62, & 78 position

Female: 15, 26, 44, 62, & 78 position

[RoHS Compliant](#)

[DOWNLOAD](#)

[DRAWING](#)

[CERTIFICATE OF COMPLIANCE](#)



### Part Numbers

XDC3E15PTE

XDC3E15ST

XDC3E26PTE

XDC3E26ST

XDC3E44PTE

XDC3E44ST

XDC3E62PTE

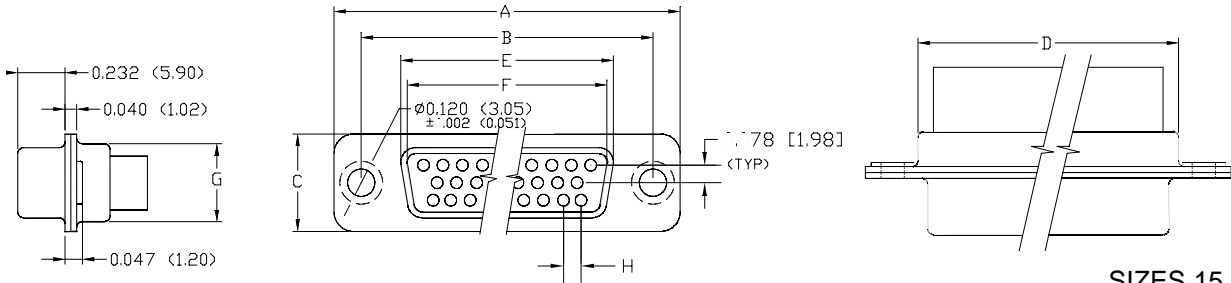
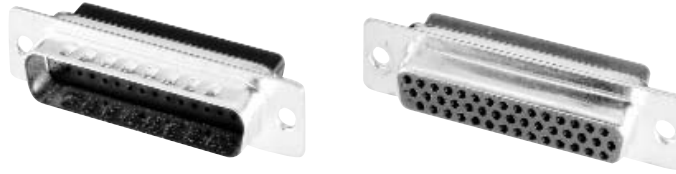
XDC3E62ST

XDC3E78PTE

XDC3E78ST

[Click here for Non-RoHS Compliant Product Part Number Page](#)

# HIGH DENSITY CRIMP CONNECTORS - DC3 SERIES



SIZES 15 TO 62

## SPECIFICATIONS:

### MECHANICAL

Shell: Steel  
 Finish: Tin Plate.  
 Insulator: Thermoplastic UL94V-0.  
 Temperature Range: -55° to +105° C.  
 Contacts: See Page 30

Pins	Row Arrangement			
	1st	2nd	3rd	4th
15	5	5	5	-
26	9	9	8	-
44	15	15	14	-
62	21	21	20	-
78	20	19	20	19

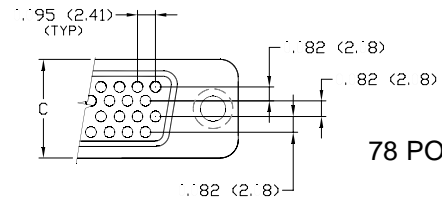
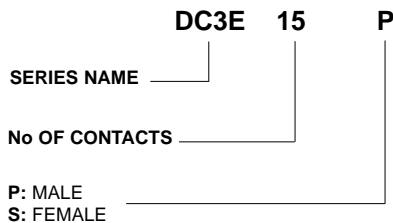
### ELECTRICAL

Voltage Rating: 300 VDC.  
 Current Rating: 3 Amps.  
 IR: > 3000 Meg OHms.  
 CR: < 15 Milliohms.

## CRIMP CONNECTORS – DC3 SERIES - DIMENSIONS

No. of Contacts	Shell Size	INCHES [MM]							
		A	B	C	D	E Max. Female	F Min. Male	G	H
		$\pm 0.005$ [ $\pm 0.127$ ]	$\pm 0.005$ [ $\pm 0.127$ ]	$\pm 0.005$ [ $\pm 0.127$ ]	$\pm 0.005$ [ $\pm 0.127$ ]	$\pm 0.005$ [ $\pm 0.127$ ]	$\pm 0.005$ [ $\pm 0.127$ ]	$\pm 0.005$ [ $\pm 0.127$ ]	$\pm 0.005$ [ $\pm 0.127$ ]
15	E (9)	1.213 [30.81]	0.984 [24.99]	0.494 [12.55]	0.759 [19.28]	0.643 [16.33]	0.666 [16.92]	0.422 [10.72]	0.090 [2.29]
26	A (15)	1.541 [39.14]	1.310 [33.27]	0.494 [12.55]	1.089 [27.65]	0.971 [24.66]	0.994 [25.25]	0.422 [10.72]	0.090 [2.29]
44	B (25)	2.088 [53.04]	1.850 [46.99]	0.494 [12.55]	1.626 [41.30]	1.511 [38.38]	1.534 [38.96]	0.422 [10.72]	0.090 [2.29]
62	C (37)	2.730 [69.34]	2.500 [63.50]	0.494 [12.55]	2.261 [57.44]	2.159 [54.84]	2.182 [55.42]	0.422 [10.72]	0.090 [2.29]
78	D (50)	2.638 [67.00]	2.406 [61.11]	0.605 [15.37]	2.178 [55.32]	2.064 [52.43]	2.079 [52.81]	0.533 [13.54]	0.095 [2.41]

## ORDER INFORMATION



78 POSITION

TE: Tin Plate Shell w/ Ground Indents(Male Only)  
 T: Tin Plate / No Indents (Female)  
 EMPTY: Yellow Zinc - Consult Factory