

VectorPak™ T-Struts

Vector T-Struts can be used for custom assemblies or to fit existing cage assemblies. Available with two nut slots. As an alternative, mounting brackets (BR16A, available separately) may be used to attach struts to cages. Strut material is aluminum with clear irridite finish. Struts are attached to side panels with 10-32 screws (Part No. HD90).

T-Strut Hardware Kit - HD34 or HD34B for Connector Mounting

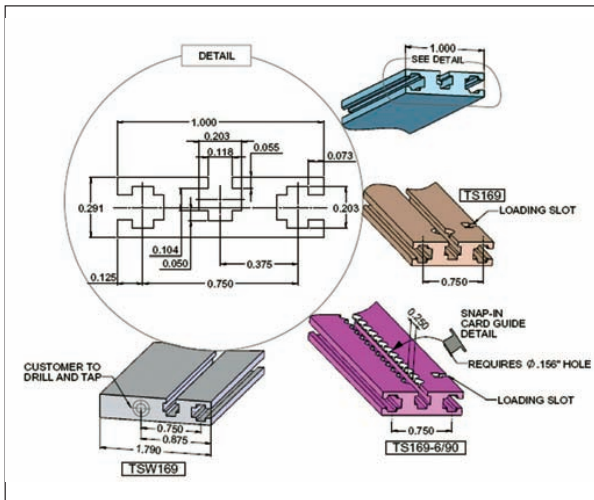
HD34 (1/2" screws) and HD34B (1/4" screws) are complete edge-connector mounting kits for attachment to VectorPak™ 'T'-Struts.

Each kit contains:

42, 4-40 locking screws (SC4-28, 1/2"L or SC4-27, 1/4"L)

42, 4-40 locking nuts (NT4-7)

42 lockwashers



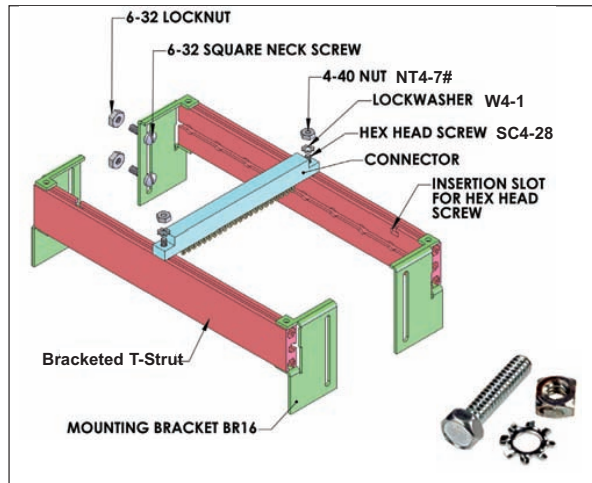
Figures showing T-Strut features - see table



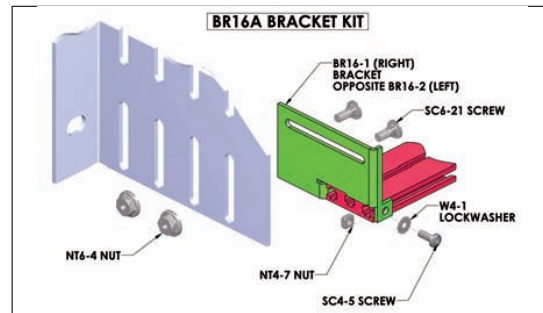
TS169-6/90

BR16A Bracket Kit includes two each BR16-1 (right) and BR16-2 (left) brackets plus installation hardware. Bracket assemblies are normally used on rear strut, though front strut may use them as well. HD90 Self-tapping Screws (pkg. 12 not shown) may also be used to mount T-struts to sidewalls.

NT4-7PA: Pkg 25 nuts that load into "T-Strut" groove



To mount connectors, simply slide nut into desired position and fasten with screws and lockwasher as illustrated. SC4-28 screws available in bulk quantities.



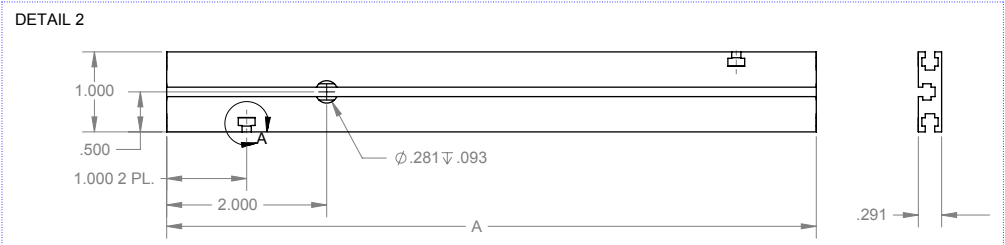
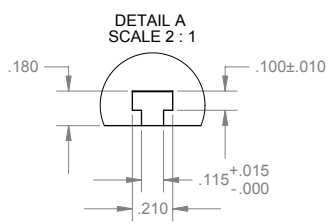
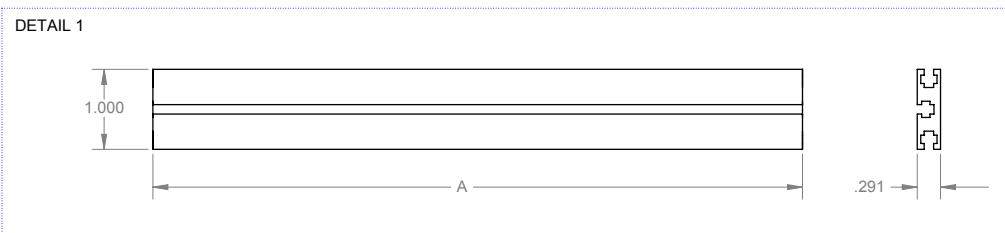
End Part No.	Length	Width	Method of Fastening	Fig.	Description
TS81	8.12"	1"	BR16 Brackets or HD90 Screws	1	1" wide T-strut, Pk. of 1 each
TS81-5/90	8.12"	1"	BR16 Brackets or HD90 Screws	4	1" wide T-strut, Pk. of 1 each
TS169	16.85"	1"	BR16 Brackets or HD90 Screws	1	1" wide T-strut, Pk. of 1 each
TSW169	16.85"	1.75"	HD90 Screws	5	1.75" wide T-strut, Pk. of 1 each
TS169-6/90	16.85"	1"	HD90 Screws	4	1" wide T-strut, Pk. of 1 each, dimpled for Snap-in guide insertion
TS209	20.85"	1"	BR16 Brackets or HD90 Screws	1	1" wide T-strut, Pk. of 1 each
TS300	30.00"	1"	Raw Stock	1	1" wide T-strut, Pk. of 1 each
TSW300	30.00"	1.75"	Raw Stock	5	1.75" wide T-strut, Pk. of 1 each
TS600	60.00"	1"	Raw Stock/pkg.	3	1" wide T-strut, Pk. of 4 pcs.

Custom lengths available on request

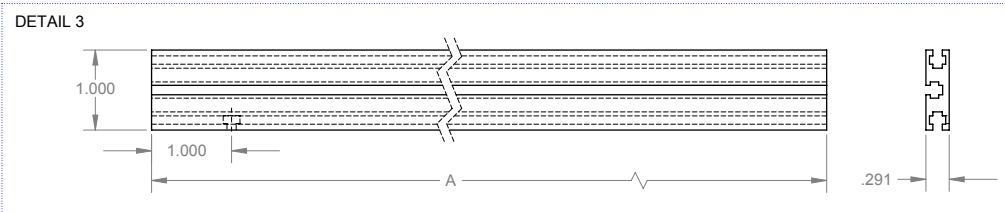


8 7 6 5 4 3 2 1

REVISIONS				
ZONE	REV.	DESCRIPTION	DATE	APPROVED
ALL	A	TABLE REDRAWN ECO 3290	12/10/86	
	B	REMOVED UNUSED P/N#	02/10/09	



PART NO.	"A" DIM.	DETAIL NO.
TS81	8.120	2
TS169	16.850	2
TS209	20.850	2
TS300	30.00 +1.50/- .00	1
TS600	60.00 +1.50/- .00	1
TS169-3	16.850	3



5. DEGREASE
 4. STRAIGHT WITHIN .015/10" IN LENGTH
 3. CUT ENDS TO BE SQUARE WITHIN .0025/INCH IN WIDTH
 2. REMOVE ALL BURRS
 1. MAT'L: AL. EXTRUSION, 6063-T6, PRE-ANOD., P/N TS100
- NOTES: UNLESS OTHERWISE SPECIFIED.

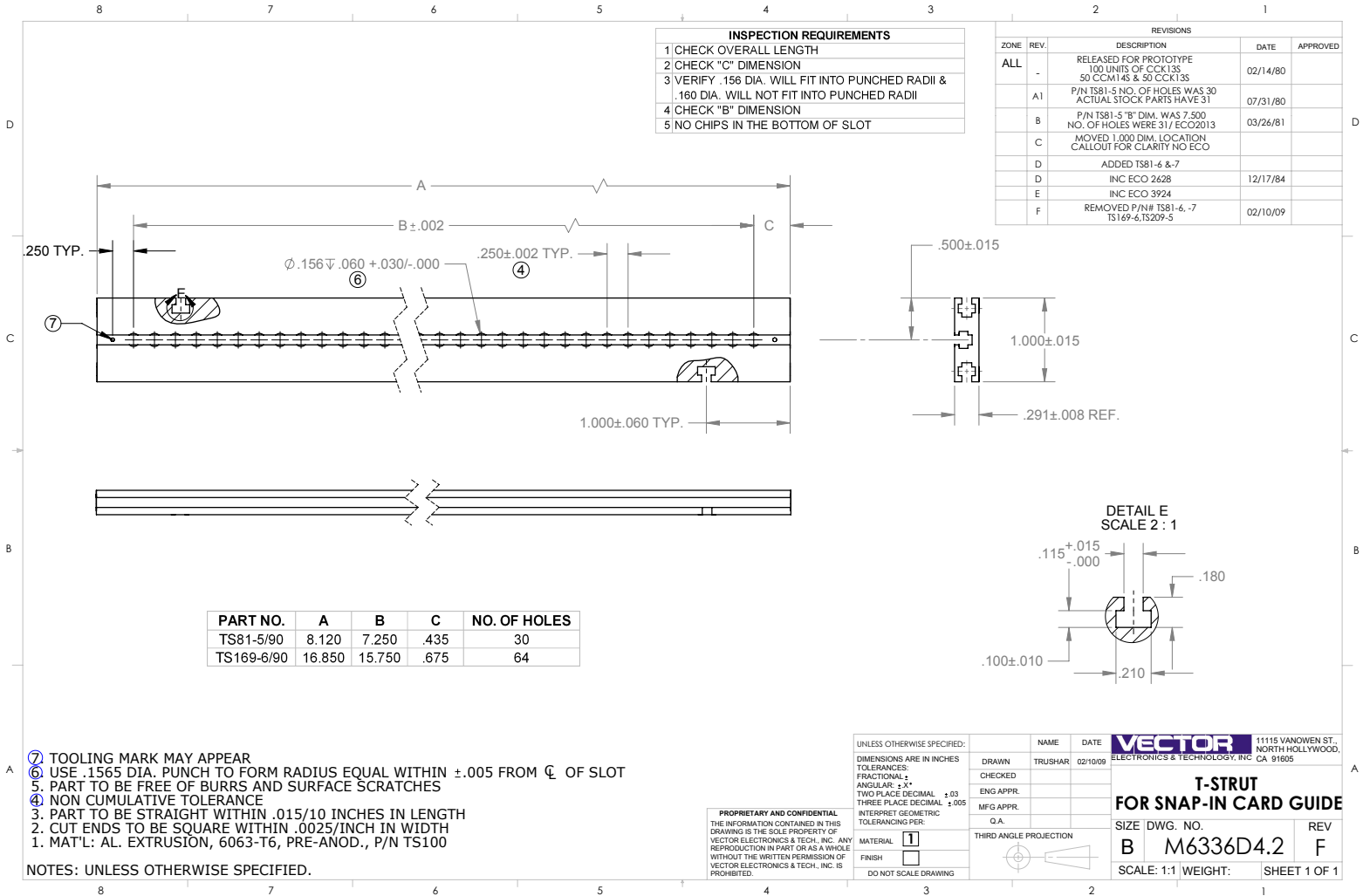
PROPRIETARY AND CONFIDENTIAL
 THE INFORMATION CONTAINED IN THIS DRAWING IS THE SOLE PROPERTY OF VECTOR ELECTRONICS & TECH., INC. ANY REPRODUCTION IN PART OR AS A WHOLE WITHOUT THE WRITTEN PERMISSION OF VECTOR ELECTRONICS & TECH., INC. IS PROHIBITED.

UNLESS OTHERWISE SPECIFIED:
 DIMENSIONS ARE IN INCHES
 TOLERANCES:
 FRACTIONAL: ±
 ANGULAR: ±1°
 TWO PLACE DECIMAL: ±.03
 THREE PLACE DECIMAL: ±.005
 INTERPRET GEOMETRIC TOLERANCING PER:
 MATERIAL: 1
 FINISH: □
 DO NOT SCALE DRAWING

NAME	DATE
DRAWN TRUSHAR	02/08/09
CHECKED	
ENG APPR.	
MFG APPR.	
G.A.	

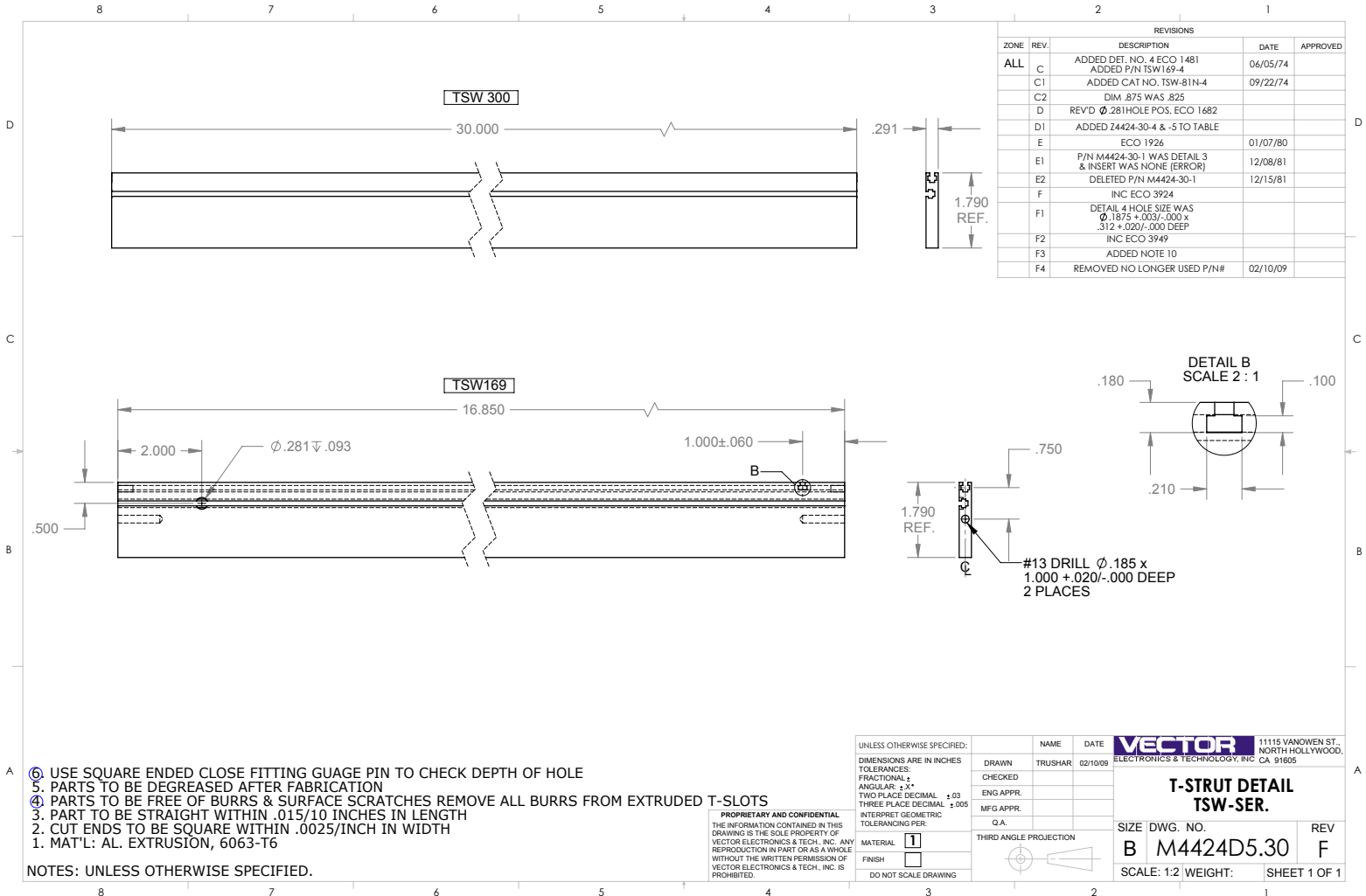
VECTOR 11115 VANOWEN ST., NORTH HOLLYWOOD, CA 91605
T-STRUT W/O INSERTS
 SIZE DWG. NO. B 5280006 REV B
 SCALE: 1:1 WEIGHT: SHEET 1 OF 1

8 7 6 5 4 3 2 1



- ⑦ TOOLING MARK MAY APPEAR
 ⑥ USE .1565 DIA. PUNCH TO FORM RADIUS EQUAL WITHIN ±.005 FROM ϕ OF SLOT
 ⑤ PART TO BE FREE OF BURRS AND SURFACE SCRATCHES
 ④ NON CUMULATIVE TOLERANCE
 3. PART TO BE STRAIGHT WITHIN .015/10 INCHES IN LENGTH
 2. CUT ENDS TO BE SQUARE WITHIN .0025/INCH IN WIDTH
 1. MAT'L: AL. EXTRUSION, 6063-T6, PRE-ANOD., P/N TS100

NOTES: UNLESS OTHERWISE SPECIFIED.



- 6. USE SQUARE ENDED CLOSE FITTING GAUGE PIN TO CHECK DEPTH OF HOLE
- 5. PARTS TO BE DEGREASED AFTER FABRICATION
- 4. PARTS TO BE FREE OF BURRS & SURFACE SCRATCHES REMOVE ALL BURRS FROM EXTRUDED T-SLOTS
- 3. PART TO BE STRAIGHT WITHIN .015/10 INCHES IN LENGTH
- 2. CUT ENDS TO BE SQUARE WITHIN .0025/INCH IN WIDTH
- 1. MAT'L: AL. EXTRUSION, 6063-T6

NOTES: UNLESS OTHERWISE SPECIFIED.

PROPRIETARY AND CONFIDENTIAL
 THE INFORMATION CONTAINED IN THIS DRAWING IS THE SOLE PROPERTY OF VECTOR ELECTRONICS & TECH., INC. ANY REPRODUCTION IN PART OR AS A WHOLE WITHOUT THE WRITTEN PERMISSION OF VECTOR ELECTRONICS & TECH., INC. IS PROHIBITED.

UNLESS OTHERWISE SPECIFIED:
 DIMENSIONS ARE IN INCHES
 TOLERANCES:
 FRACTIONAL: ±
 ANGULAR: ±1°
 TWO PLACE DECIMAL ±.03
 THREE PLACE DECIMAL ±.005
 INTERPRET GEOMETRIC TOLERANCING PER:
 MATERIAL 1
 FINISH
 DO NOT SCALE DRAWING

NAME	DATE
TRUSHAR	02/10/09
DRAWN	
CHECKED	
ENG APPR.	
MFG APPR.	
G.A.	
THIRD ANGLE PROJECTION	

VECTOR 11115 VANOWEN ST., NORTH HOLLYWOOD, CA 91605
ELECTRONICS & TECHNOLOGY, INC.
T-STRUT DETAIL TSW-SER.
 SIZE DWG. NO. REV
B M4424D5.30 F
 SCALE: 1:2 WEIGHT: SHEET 1 OF 1