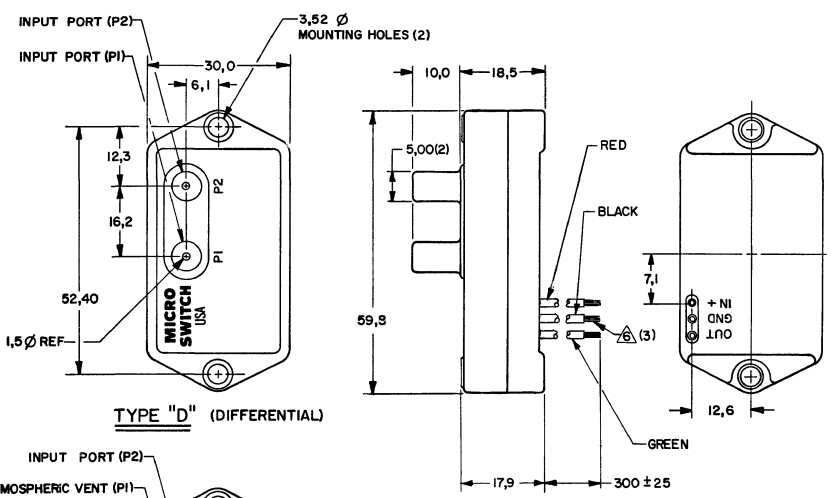
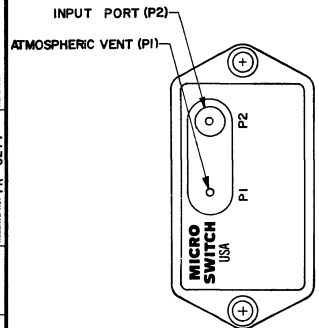


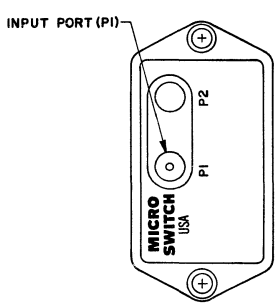
140PC01 SERIES CHART 2
 PAGE 1 OF 1
 REV. 12
 1988 NOV 15



TYPE "D" (DIFFERENTIAL)



TYPE "G" (GAGE)



TYPE "A" (ABSOLUTE)

NOTES
 1 - INPUT MEDIA:
 P1 - DRY GASES ONLY; CONNECTION SIDE OF SENSOR
 P2 - LIMITED ONLY TO THOSE MEDIA THAT WILL NOT ATTACK
 POLYESTER, SILICON, OR SILICONE BASED ADHESIVE
 2 - TERMINALS ARE PLATED FOR SOLDERING
 3 - LIMIT SOLDERING TO 315°C MAX FOR 10 SECONDS MAX
 4 - UNITS ARE OF PLASTIC CONSTRUCTION
 Δ F.S.O. IS THE ALGEBRAIC DIFFERENCE BETWEEN THE OUTPUT
 END POINTS (NULL AND FULL PRESSURE)
 Δ STRIPPED & TINNED LEAD ENDS TO BE 5.0 MAX

METRIC	INCH
1.5	.04
3.52	.139
5.00	.197
6.1	.240
7.1	.280
10.0	.39
12.3	.484
12.6	.496
16.2	.64
18.5	.73
30.0	1.18
52.40	2.063
59.8	2.35
300±25	11.8±1.0

CATALOG LISTING	TYPE	OPERATING PRESSURE RANGE
(K)	D	0 TO -1.0 PSID
141PC01GW	G	0 TO -1.0 PSIG
142PC01DW	D	0 TO 1.0 PSID
142PC01GW	G	0 TO 1.0 PSIG

GENERAL OPERATING CHARACTERISTICS	
PRESSURE RANGE	0 TO 51.7 mmHg (0 TO 1 PSI)
OVERPRESSURE	1035 mmHg (20 PSI)
TEMPERATURE RANGES	STORAGE -55 TO +125°C OPERATE -40 TO +85°C COMPENSATED -18 TO +63°C
SUPPLY VOLTAGE	7 TO 16 VDC
SUPPLY CURRENT	20 mA MAX WITH 10K LOAD
SHORT CIRCUIT LIMIT	MAY BE SHORTED INDEFINITELY
OUTPUT RIPPLE	NONE
GROUND REFERENCE	SUPPLY AND OUTPUT ARE COMMON

ELECTRICAL PERFORMANCE AT 25°C AND 8.00 ± 0.01 VDC SUPPLY	
OUTPUT VOLTAGE	
141PC01DW OR GW	
NULL (0 PSIG)	1.00 ± 0.05 VDC
FULL SCALE (1.0 PSIG [51.7 mmHg])	6.00 ± 0.10 VDC (P2 < P1)
F.S.O. Δ	5.00 ± 0.05 VDC (P2 < P1)
142PC01DW OR GW	
NULL (0 PSIG)	1.00 ± 0.05 VDC
FULL SCALE (1.0 PSIG [51.7 mmHg])	6.00 ± 0.10 VDC (P2 > P1)
F.S.O. Δ	5.00 ± 0.05 VDC (P2 > P1)
SENSITIVITY	96.7 mV/mmHg (5.0 V/PSI)
LINEARITY (% F.S.O.) Δ (BFSL)	± 0.75 MAX (P2 < P1) ± 1.50 MAX (P2 > P1)
HYSTERESIS & REPEATABILITY (% F.S.O.) Δ	± 0.3 TYPICAL
TEMPERATURE ERROR (% F.S.O.) Δ	± 1.53 MAX
RESPONSE TIME	1 m SEC MAX TYP

TOLERANCES			
APPLY TO DESIGN UNITS. CONVERSIONS ARE ONLY FOR REFERENCE. UNLESS NOTED, TOLERANCES ARE ±			
DIM.	TOL.	DIM.	TOL.
mm	mm/10	IN.	IN/10
NO PLACES	X	1/32	X
ONE PLACE	X,X	0.010	X,X
TWO PLACES	X,X,X	0.0010	X,X,X
THREE PLACES	X,X,X,X	0.00010	X,X,X,X
ANGLES			

THIS DRAWING COVERS A PROPRIETARY ITEM AND IS THE PROPERTY OF MICRO SWITCH, A DIVISION OF HONEYWELL. THIS DRAWING IS NOT TO BE COPIED OR USED WITHOUT THE APPROVAL OF MICRO SWITCH.

MICRO SWITCH FREEPORT, ILLINOIS, U.S.A. A DIVISION OF HONEYWELL REG. MFG. CODE P199	PRESSURE TRANSDUCER	CATALOG LISTING 140PC01 SERIES CHART 2	WEIGHT 31 GRAMS
---	----------------------------	---	------------------------