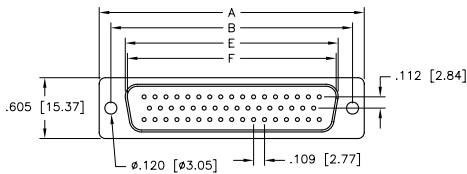
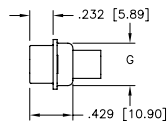
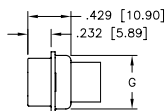


9 THROUGH 37 POSITION



50 POSITION

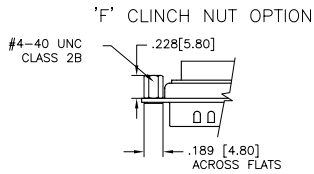
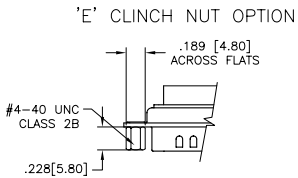
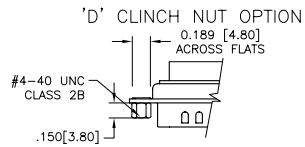
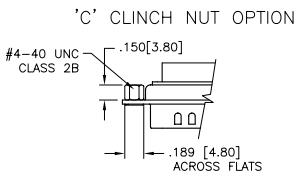


REVISIONS				
ZONE	REV	DESCRIPTION	DATE	APPROVED

No. of Contacts	Shell Size	DIMENSIONS						
		A	B	C	D	E Max. Female	F Min. Male	G
09	E	1.213 [30.81]	0.984 [24.99]	0.494 [12.55]	0.759 [19.28]	0.643 [16.33]	0.666 [16.92]	0.422 [10.72]
15	A	1.541 [39.14]	1.310 [33.27]	0.494 [12.55]	1.089 [27.65]	0.971 [24.66]	0.994 [25.25]	0.422 [10.72]
25	B	2.088 [53.04]	1.850 [46.99]	0.494 [12.55]	1.626 [41.30]	1.511 [38.38]	1.534 [38.96]	0.422 [10.72]
37	C	2.730 [69.34]	2.500 [63.50]	0.494 [12.55]	2.261 [57.44]	2.159 [54.84]	2.182 [55.42]	0.422 [10.72]
50	D	2.638 [67.00]	2.406 [61.11]	0.605 [15.37]	2.178 [55.32]	2.064 [52.43]	2.079 [52.81]	0.527 [13.40]

THIS IS A CONTROLLED DOCUMENT AND IS SUBJECT TO CHANGE. CONTACT NORTHERN TECHNOLOGIES ENGINEERING FOR THE LATEST REVISION.

UNLESS OTHERWISE SPECIFIED 1. ALL DIMENSIONS ARE IN INCHES (MM) 2. DIMENSIONS ARE TYPICAL		Northern Technologies		THIS DRAWING IS THE PROPERTY OF NORTHERN TECHNOLOGIES AND SHOULD NOT BE REPRODUCED WITHOUT NORTHERN TECHNOLOGIES WRITTEN PERMISSION	
DRAWN JSD 13-OCT-05		PART NUMBER SEE ORDER INFORMATION			
CHECKED SCN 13-OCT-05		DESCRIPTION DCE SERIES CONNECTORS			
ISSUED 13-OCT-05		SIZE B	CODE 200_153	DWG NO. 0002-200-153	REV
SCALE 1:1		SHEET 1 OF 2			



NOTES:

1. SHELL MATERIAL: STEEL
2. SHELL FINISH: SEE ORDER INFORMATION
3. INSULATOR MATERIAL: GLASS FILLED PBT UL94V-0
4. INSULATOR COLOR: BLACK
5. VOLTAGE RATING: 250 VAC
6. CURRENT RATING: 3 AMPS MAX
7. INSULATION RESISTANCE: 3000 MEGOHMS MIN @ 500 VDC
8. DIELECTRIC WITHSTANDING VOLTAGE: 1000 VAC / 1 MINUTE
9. TEMPERATURE RANGE: -55° TO +105° CENTIGRADE

THIS IS A CONTROLLED DOCUMENT AND IS SUBJECT TO CHANGE. CONTACT NORTHERN TECHNOLOGIES ENGINEERING FOR THE LATEST REVISION.

REVISIONS				
ZONE	REV	DESCRIPTION	DATE	APPROVED
	A	ECN 0619	25-AUG-06	
	B	ECN 0622	19-OCT-06	
	C	ECN 0639	05-DEC-07	
	D	ECN 0653	16-MAY-08	

FACTORY DESIGNATOR
 LEAVE BLANK

ORDER INFORMATION

() DC E 25 P TE C
 SERIES
 RoHS
 NO. OF CONTACTS
 P: MALE
 S: FEMALE

- EMPTY: NO OPTIONS
- C: REAR MOUNT CLINCH NUT .150 [3.80]
- D: FRONT MOUNT CLINCH NUT 0.150 [3.80]
- E: FRONT MOUNT CLINCH NUT 0.228 [5.80]
- F: REAR MOUNT CLINCH NUT 0.228 [5.80]

- TE: TIN PLATED WITH GROUNDING INDENTS (MALE ONLY)
- T: TIN PLATED NO GROUNDING INDENTS (FEMALE ONLY)
- NE: NICKEL PLATED WITH GROUNDING INDENTS (MALE ONLY)
- N: NICKEL PLATED NO GROUNDING INDENTS (FEMALE ONLY)

UNLESS OTHERWISE SPECIFIED 1. ALL DIMENSIONS ARE IN INCHES (MM) 2. DIMENSIONS ARE TYPICAL		Northern Technologies <small>THIS DRAWING IS THE PROPERTY OF NORTHERN TECHNOLOGIES AND SHOULD NOT BE REPRODUCED WITHOUT NORTHERN TECHNOLOGIES WRITTEN PERMISSION</small>	
DRAWN JSD 13-OCT-05		PART NUMBER SEE ORDER INFORMATION	
CHECKED SCN 13-OCT-05		DESCRIPTION DCE SERIES CONNECTORS	
ISSUED 13-OCT-05	SCALE 1:1	SIZE CODE B 200_153	DWG NO. 0002-200-153
		SHEET 2 OF 2	