

STAMPED AND FORMED CONTACTS, PG 1 of 2

Click on [blue underlined](#) part numbers to be taken to their spec sheets.

OPTIONS

PART NUMBER: [AT62-14-01XX](#)
DESCRIPTION: CONTACT, SOCKET, STAMPED, SIZE 16

MATERIAL:
 CONTACT BODY: COPPER ALLOY
 HOOD: STAINLESS STEEL
PLATING SUFFIX CODE:
 XX=22 NICKEL PLATING
 XX=44 GOLD PLATING
CONTACT GENERAL DATA SPECIFICATION: S2-15217
AVAILABLE CRIMPERS: ATT-16-00, MFX-3950 & MFX-3953
CRIMPER SPECIFICATIONS: S2-15223 & S2-15224
CRIMP INFORMATION DRAWING: S2-15221 & S2-15222
CONTACTS PER REEL: APPROX. 4000 (PARTIAL REELS AVAILABLE)



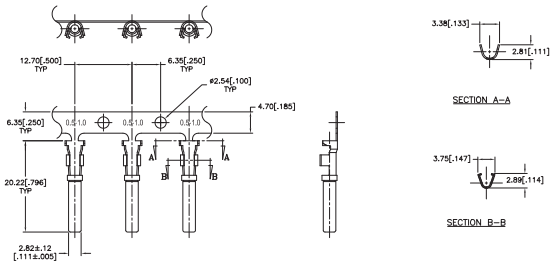
PART NUMBER: [AT62-16-01XX](#)
DESCRIPTION: CONTACT, SOCKET, STAMPED, SIZE 16

MATERIAL:
 CONTACT BODY: COPPER ALLOY
 HOOD: STAINLESS STEEL
PLATING SUFFIX CODE:
 XX=22 NICKEL PLATING
 XX=44 GOLD PLATING
CONTACT GENERAL DATA SPECIFICATION: S2-15217
AVAILABLE CRIMPERS: ATT-16-00, ATT-16-01, MFX-3950 & MFX-3953
CRIMPER SPECIFICATIONS: S2-15223 & S2-15224
CRIMP INFORMATION DRAWING: S2-15221 & S2-15222
CONTACTS PER REEL: APPROX. 4000 (PARTIAL REELS AVAILABLE)



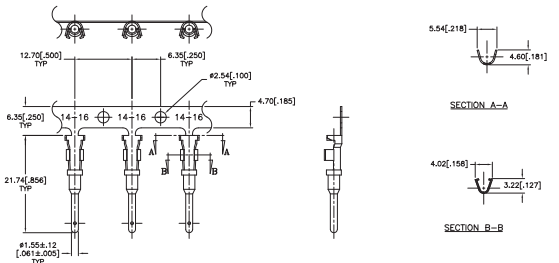
PART NUMBER: [AT62-16-06XX](#)
DESCRIPTION: CONTACT, SOCKET, STAMPED, SIZE 16

MATERIAL:
 CONTACT BODY: COPPER ALLOY
 HOOD: STAINLESS STEEL
PLATING SUFFIX CODE:
 XX=22 NICKEL PLATING
 XX=44 GOLD PLATING
CONTACT GENERAL DATA SPECIFICATION: S2-15217
AVAILABLE CRIMPERS: ATT-16-01, MFX-3950 & MFX-3953
CRIMPER SPECIFICATIONS: S2-15223 & S2-15224
CRIMP INFORMATION DRAWING: S2-15221 & S2-15222
CONTACTS PER REEL: APPROX. 4000 (PARTIAL REELS AVAILABLE)



PART NUMBER: [AT60-14-01XX](#)
DESCRIPTION: CONTACT, PIN, STAMPED, SIZE 16

MATERIAL: COPPER ALLOY
PLATING SUFFIX CODE:
 XX=22 NICKEL PLATING
 XX=44 GOLD PLATING
CONTACT GENERAL DATA SPECIFICATION: S2-15217
AVAILABLE CRIMPERS: ATT-16-00, MFX-3950 & MFX-3953
CRIMPER SPECIFICATIONS: S2-15223 & S2-15224
CRIMP INFORMATION DRAWING: S2-15221 & S2-15222
CONTACTS PER REEL: APPROX. 4000 (PARTIAL REELS AVAILABLE)

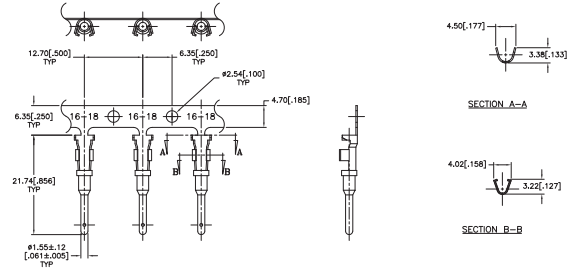


STAMPED AND FORMED CONTACTS, PG 2 of 2

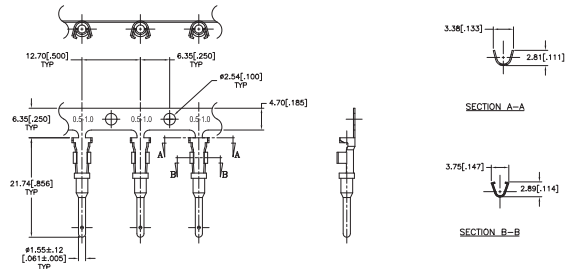
Click on blue underlined part numbers to be taken to their spec sheets.

OPTIONS

PART NUMBER: AT60-16-01XX
DESCRIPTION: CONTACT, PIN, STAMPED, SIZE 16
MATERIAL: COPPER ALLOY
PLATING SUFFIX CODE:
 XX=22 NICKEL PLATING
 XX=44 GOLD PLATING
CONTACT GENERAL DATA SPECIFICATION: S2-15217
AVAILABLE CRIMPERS: ATT-16-00, ATT-16-01, MFX-3950 & MFX-3953
CRIMPER SPECIFICATIONS: S2-15223 & S2-15224
CRIMP INFORMATION DRAWING: S2-15221 & S2-15222
CONTACTS PER REEL: APPROX. 4000 (PARTIAL REELS AVAILABLE)



PART NUMBER: AT60-16-06XX
DESCRIPTION: CONTACT, PIN, STAMPED, SIZE 16
MATERIAL: COPPER ALLOY
PLATING SUFFIX CODE:
 XX=22 NICKEL PLATING
 XX=44 GOLD PLATING
CONTACT GENERAL DATA SPECIFICATION: S2-15217
AVAILABLE CRIMPERS: ATT-16-01, MFX-3950 & MFX-3953
CRIMPER SPECIFICATIONS: S2-15223 & S2-15224
CRIMP INFORMATION DRAWING: S2-15221 & S2-15222
CONTACTS PER REEL: APPROX. 4000 (PARTIAL REELS AVAILABLE)



SOLID/MACHINED CONTACTS

Click on [blue underlined part numbers](#) to be taken to their spec sheets.

OPTIONS

MILITARY-STYLE

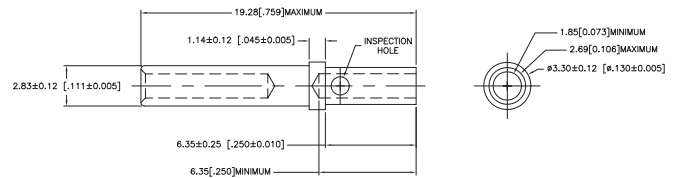
PART NUMBER: [AT60-202-16XX](#)
DESCRIPTION: CONTACT, PIN, SOLID MACHINED, SIZE 16
MATERIAL: COPPER ALLOY
PLATING SUFFIX CODE:
 XX=141 NICKEL PLATING
 XX=31 GOLD PLATING
CONTACT GENERAL DATA SPECIFICATION: S2-15217
AVAILABLE CRIMPERS: CA-5D12 & CA-5E12
CRIMPER SPECIFICATIONS: S2-15219 & S2-15220
CRIMP INFORMATION DRAWING: S2-15218



PART NUMBER: [AT62-201-16XX](#)
DESCRIPTION: CONTACT, SOCKET, SOLID MACHINED, SIZE 16
MATERIAL:
 CONTACT BODY: COPPER ALLOY
 HOOD: STAINLESS STEEL
PLATING SUFFIX CODE:
 XX=141 NICKEL PLATING
 XX=31 GOLD PLATING
CONTACT GENERAL DATA SPECIFICATION: S2-15217
AVAILABLE CRIMPERS: CA-5D12 & CA-5E12
CRIMPER SPECIFICATIONS: S2-15219 & S2-15220
CRIMP INFORMATION DRAWING: S2-15218

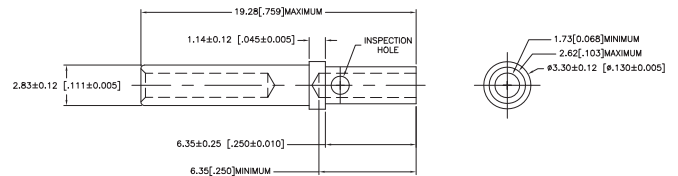


PART NUMBER: [65-54942-14](#)
DESCRIPTION: CONTACT, SOCKET, ROCKSOLID, SIZE 16
AWG RANGE: 14AWG
MATERIAL: COPPER ALLOY
PLATING: GOLD
CONTACT GENERAL DATA SPECIFICATION: S2-15217
AVAILABLE CRIMPERS: CA-5D12 & CA-5E12
CRIMPER SPECIFICATIONS: S2-15219 & S2-15220
CRIMP INFORMATION DRAWING: S2-15218

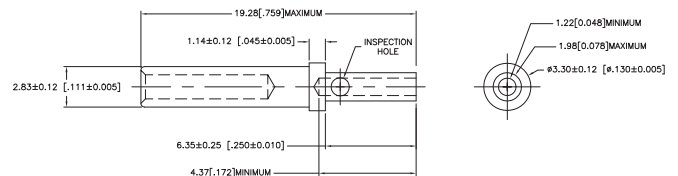


ROCKSOLID™ CONTACTS

PART NUMBER: [65-54942-16](#)
DESCRIPTION: CONTACT, SOCKET, ROCKSOLID, SIZE 16
AWG RANGE: 16AWG
MATERIAL: COPPER ALLOY
PLATING: GOLD
CONTACT GENERAL DATA SPECIFICATION: S2-15217
AVAILABLE CRIMPERS: CA-5D12 & CA-5E12
CRIMPER SPECIFICATIONS: S2-15219 & S2-15220
CRIMP INFORMATION DRAWING: S2-15218



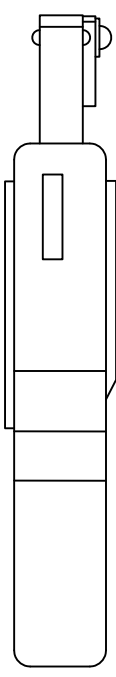
PART NUMBER: [65-54942-20](#)
DESCRIPTION: CONTACT, SOCKET, ROCKSOLID, SIZE 16
AWG RANGE: 20AWG
MATERIAL: COPPER ALLOY
PLATING: GOLD
CONTACT GENERAL DATA SPECIFICATION: S2-15217
AVAILABLE CRIMPERS: CA-5D12 & CA-5E12
CRIMPER SPECIFICATIONS: S2-15219 & S2-15220
CRIMP INFORMATION DRAWING: S2-15218



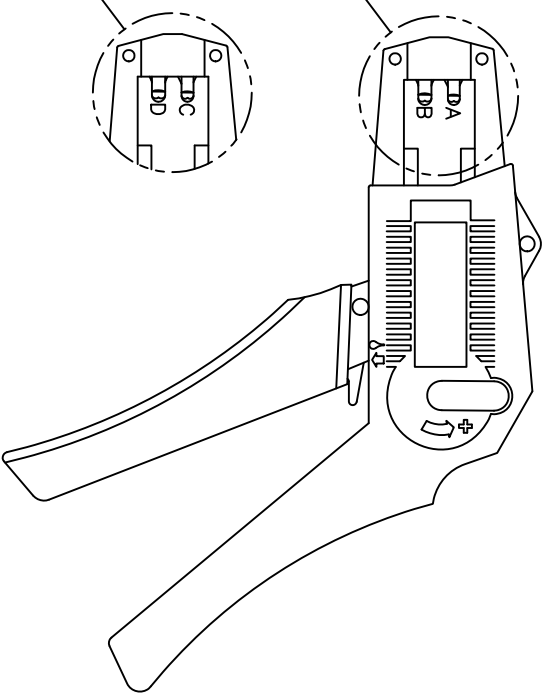
REVISIONS					
REV	ECO	DESCRIPTION	DATE	BY	APPR
A1	-	RELEASE NUMBER 016571	6/12/09	B.D.B.	M.R.F.

USE CRIMPER NUMBER:
ATT-16-00 WITH CAVITY A & B

CONTACT P/N:	INSULATION ϕ	CAVITY	WIRE SIZE
AT60-16-01**	.075 - .140	B	1.5mm ²
AT62-16-01**	[1.91 - 3.56]	A	16AWG
		A	1.0mm ²
AT60-14-01**	.095 - .150	B	14AWG
AT62-14-01**	[2.41 - 3.81]	B	2.0mm ²
		B	1.5mm ²
		A	1.5mm ²
		A	16AWG
		A	1.0mm ²
AT60-16-06**	.055 - .100	A	16AWG
AT62-16-06**	[1.40 - 2.54]	A	1.0mm ²



CAVITY VIEW OF
CRIMPER NUMBER
ATT-16-00



CAVITY VIEW OF
CRIMPER NUMBER
ATT-16-01

CONTACT P/N:	INSULATION ϕ	CAVITY	WIRE SIZE
AT60-16-01**	.075 - .140	D	18AWG
AT62-16-01**	[1.91 - 3.56]	D	.75mm ²
AT60-16-06**	.055 - .100	D	18AWG
AT62-16-06**	[1.40 - 2.54]	D	.75mm ²
		C	.50mm ²

USE CRIMPER NUMBER:
ATT-16-01 WITH CAVITY C & D

ALL REFERENCES TO DEUTSCH PRODUCTS OR SPECIFICATIONS ARE FOR COMPARISON PURPOSES ONLY, AND REFER TO DEUTSCH INDUSTRIAL PRODUCTS.

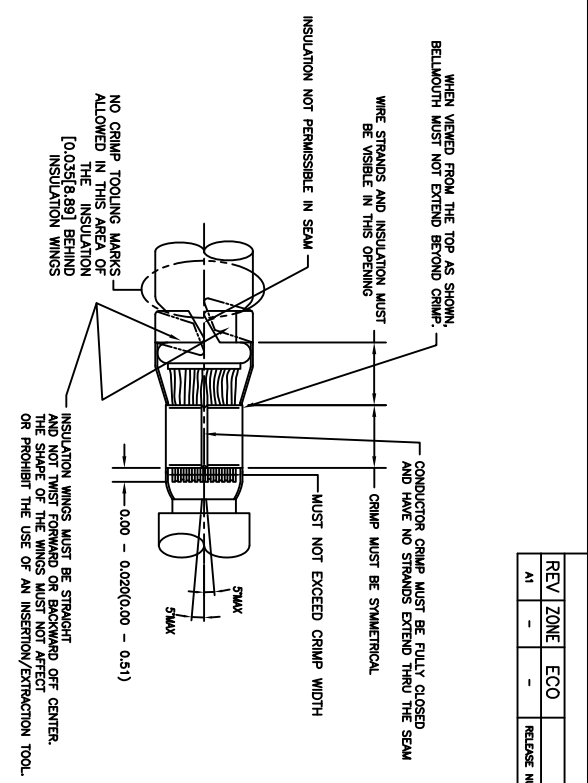
- NOTES (UNLESS OTHERWISE SPECIFIED):
- ALL DIMENSIONS IN INCHES [MILLIMETERS]
 - FOR PLATING CODES ** SEE CONTACT DATA DRAWINGS.
 - THIS TOOL IS FOR CRIMPING SIZE 16 CONTACTS ONLY TO WIRES LISTED IN THE CHARTS.
 - DEUTSCH IPD CROSS REFERENCE PART NUMBERS ARE DTT-16-00 AND DTT-16-01.

QUANTITY	PART NUMBER	DESCRIPTION	ITER#
		MATERIALS LIST	
		SINE Systems Corporation	
		A Subsidiary of Amphenol Corporation	
		44724 Morley Drive	
		Clifton Township, NJ 08036	
		INSTRUCTIONS: ATT-16-00 & 01	
		CRIMPER, HAND, STAMPED CONTACTS	
		SIZE: PCD# NODWG NO:	REVISION
		B 16K44	A1
		SCALE: NONE	
		S2-15223	
		SHEET 1 of 1	

UNLESS OTHERWISE SPECIFIED	SIGNATURES	DATE
1) All dimensions are in inches.	DRAWN: BENJAMIN	6/8/09
2) Tolerances are as follows:	CHECKED: FORCE	6/8/09
3) 1/16 DEC .0006	ENGINEER: BENJAMIN	
3) 1/32 DEC .0003	APPROVAL: BENJAMIN	6/8/09
4) Hole Reference = A	CUSTOMER:	
INTERNAL SPECIFICATIONS:		
N/A		
PROCESS SPECIFICATIONS:		
N/A		
NOTE: ASST:		

REVISIONS						
REV	ZONE	ECO	DESCRIPTION	DATE	BY	APP
A1	-	-	RELEASE NUMBER 016871	6/12/09	B.D.B.	M.F.F.

STAMPED CONTACT PART NUMBER 1062=SOCKET	SIZE	CONDUCTOR WIRE SIZE	CRIMP HEIGHT	CRIMP WIDTH	CONDUCTOR PUNCH NUMBER	CONDUCTOR ANVIL NUMBER	CRIMP TENSILE REFERENCE
A780-14-011x A782-14-011x INSULATION RANGE 0.095-0.150(2.41-3.81)	16	14 AWG 2.00mm ² 1.50mm ² 16 AWG 1.00mm ² 18 AWG 0.75mm ²	0.055(1.40) 0.055(1.40) 0.055(1.39) 0.050(1.27) 0.049(1.24) 0.048(1.22)	±0.003 INCH [±0.08 mm]	AT17-002-0200 AT17-101-0200	AT17-101-0200	28(111) 28(111)
A780-16-011x A782-16-011x INSULATION RANGE 0.075-0.140(1.91-3.58)	16	16 AWG 2.00mm ² 1.50mm ² 18 AWG 1.00mm ² 20 AWG 0.50mm ²	0.051(1.40) 0.051(1.40) 0.051(1.39) 0.050(1.27) 0.049(1.24) 0.048(1.22)	±0.003 INCH [±0.08 mm]	AT17-003-0200 AT17-103-0200	AT17-103-0200	28(111) 28(111)



CROSS REFERENCE

SINE PART NUMBER	DEUTSCH PART NUMBER
MFX-3950	DC116-02-00
AT17-002-0200	1017-002-0200
AT17-003-0200	1017-003-0200
AT17-101-0200	1017-101-0200
AT17-103-0200	1017-103-0200
AT17-210-0200	1017-210-0200
AT17-211-0200	1017-211-0200
AT17-213-0200	1017-213-0200
AT17-214-0200	1017-214-0200
AT17-217-0200	1017-217-0200
AT17-218-0200	1017-218-0200
AT17-310-0200	1017-310-0200
AT17-311-0200	1017-311-0200
AT17-313-0200	1017-313-0200
AT17-304-0200	1017-304-0200
AT17-317-0200	1017-317-0200
AT17-318-0200	1017-318-0200

INSULATION DIAMETER RANGE	INSULATION PUNCH NUMBER	INSULATION ANVIL NUMBER
0.120-0.150 [3.05-3.81]	AT17-210-0200	AT17-310-0200
0.105-0.125 [2.67-3.18]	AT17-211-0200	AT17-311-0200
0.085-0.111 [2.16-2.82]	AT17-213-0200	AT17-313-0200
0.075-0.105 [1.91-2.67]	AT17-214-0200	AT17-304-0200
0.063-0.094 [1.62-2.39]	AT17-217-0200	AT17-317-0200
0.050-0.075 [1.27-1.91]	AT17-218-0200	AT17-318-0200

NOTES: UNLESS OTHERWISE SPECIFIED

- ALL DIMENSIONS ARE IN INCHES(mm).
- FORCES ARE IN POUNDS(LBS) AND NEWTONS(N).
- "X"= PLATING SUFFIX. SEE INDIVIDUAL CONTACT DRAWING.
- WIRE STRIP LENGTH: 0.775±0.029(4.45±0.54). BROKEN OR MISSING CONDUCTOR STRANDS ARE NOT ACCEPTABLE.
- USE A BLADE MICROMETER (0.100(2.54) MIN APERTURE AND 0.060(0.010)(1.50(0.040) ANVIL) TO MEASURE THE CONDUCTOR CRIMP. SEE SECTION AA.
- CRIMP TENSILE STRENGTH IS DETERMINED AT A PULL RATE SPEED OF 1.00 INCH(2.54) PER MINUTE. INSULATION WINGS ARE REMOVED FOR TEST. ACTUAL CRIMP TENSILE STRENGTH DEPENDS ON WIRE/CONDUCTOR SIZE. VALUES ON THIS SPECIFICATION ARE FOR REFERENCE ONLY.
- INSULATION DIAMETER RANGE IS DETERMINED BY CONNECTOR AND ITS WIRE SEAL SIZE. SEE CONNECTOR DRAWING FOR INSULATION RANGE.
- INSULATION CRIMP DIAMETER SHOULD BE THE EQUAL OR LESS THAN THE DIAMETER OF THE WIRE INSULATION (HARD OR TEFION INSULATION MAY BE AN EXCEPTION). INSULATION CRIMP SHALL NOT AFFECT REMOVAL TOOL PERFORMANCE AND SHALL NOT DAMAGE CONNECTOR BROWNIE SEAL.
- CONDUCTOR TYPE ARE PER SAE J1128(AWG) AND ISO 6722(METRIC)
- FOR CONTACT MATERIAL AND PERFORMANCE DATA, SEE DRAWING S2-15217.
- REFER TO S2-15223 AND S2-15224 AND CROSS REFERENCE CHARTS FOR CRIMP TOOL DATA.

ALL REFERENCES TO DEUTSCH PRODUCTS OR SPECIFICATIONS ARE FOR COMPARISON PURPOSES ONLY, AND REFER TO DEUTSCH INDUSTRIAL PRODUCTS.

QUANTITY	PART NUMBER	MATERIALS LIST	DESCRIPTION	ITEM
UNLESS OTHERWISE SPECIFIED				
1) All dimensions are in inches.	SIGNATURES			
2) Plating is standard unless otherwise noted.	DATE	DATE		
3) Plating is standard unless otherwise noted.	4/7/09	4/7/09		
4) Plating is standard unless otherwise noted.	6/8/09	6/8/09		
5) Production Standard Per: <input type="checkbox"/> ENGINEER: <input type="checkbox"/> DESIGNER: <input type="checkbox"/>	6/8/09	6/8/09		
6) Material Specification: <input type="checkbox"/> MATERIAL SPECIFICATION: <input type="checkbox"/>	6/8/09	6/8/09		
7) Process Specifications: <input type="checkbox"/> PROCESS SPECIFICATIONS: <input type="checkbox"/>	6/8/09	6/8/09		
8) The use of this drawing is restricted to the production of parts for the project identified on this drawing. All other uses are prohibited without the written consent of the originator.	THE USE OF THIS DRAWING IS RESTRICTED TO THE PRODUCTION OF PARTS FOR THE PROJECT IDENTIFIED ON THIS DRAWING. ALL OTHER USES ARE PROHIBITED WITHOUT THE WRITTEN CONSENT OF THE ORIGINATOR.			
9) CRIMP DATA, STAMPED CONTACTS FOR CRIMPER MFX-3950	CRIMP DATA, STAMPED CONTACTS FOR CRIMPER MFX-3950			
10) SIZE (PUNCH NUMBER) IS: S2-15222	SIZE (PUNCH NUMBER) IS: S2-15222			
11) SCALE: NONE	SCALE: NONE			
12) SHEET 1 OF 1	SHEET 1 OF 1			

REVISONS		DESCRIPTION	DATE	BY	APPR
REV	ZONE	ECO	RELEASE NUMBER	B.O.B.	M.F.F.
A1	-	-	016971	6/12/09	

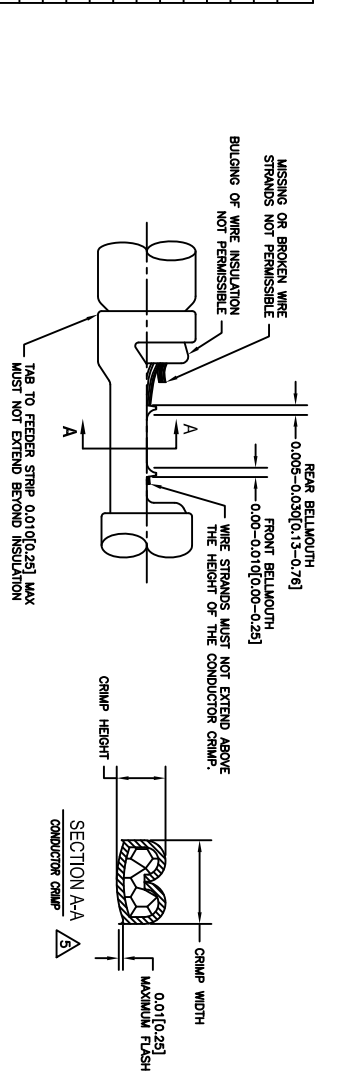
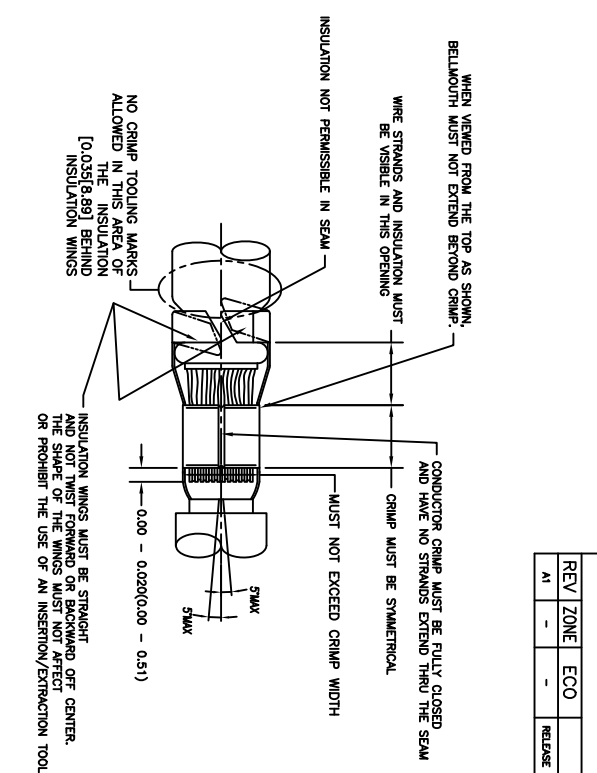
STAMPED CONTACT PART NUMBER (1009=PIN 1009=SOCKET)	SIZE	CONDUCTOR WIRE SIZE	CRIMP HEIGHT		CRIMP WIDTH		CONDUCTOR PUNCH NUMBER	CONDUCTOR ANVIL NUMBER	CRIMP TENSILE REFERENCE (LBS/IN)
			+0.001/-0.002 INCH (+0.025/-0.05 mm)	-0.001 INCH (-0.025 mm)	±0.013 INCH (±0.08 mm)	±0.013 INCH (±0.08 mm)			
A160-14-011x A162-14-011x INSULATION RANGE 0.095-0.150(2.41-3.81)	16	14 AWG	0.055(1.40)	0.094(2.39)					
		2.00mm ²	0.055(1.40)	0.094(2.39)					
		1.50mm ²	0.053(1.33)	0.094(2.39)					
		16 AWG	0.050(1.27)	0.094(2.39)	A117-083-0200	A117-183-0200	29(111)		
A160-16-011x A162-16-011x INSULATION RANGE 0.075-0.140(1.91-3.59)	16	14 AWG	0.055(1.40)	0.094(2.39)					
		2.00mm ²	0.055(1.40)	0.094(2.39)					
		1.50mm ²	0.053(1.33)	0.094(2.39)					
		16 AWG	0.050(1.27)	0.094(2.39)	A117-083-0200	A117-183-0200	29(111)		
A160-18-066x A162-18-066x INSULATION RANGE 0.055-0.100(1.40-2.54)	16	16 AWG	0.050(1.27)	0.079(2.01)					
		1.00mm ²	0.048(1.21)	0.079(2.01)					
		20 AWG	0.048(1.21)	0.079(2.01)					
		0.50mm ²	0.045(1.14)	0.079(2.01)					19(67)

CROSS REFERENCE

INSULATION DIAMETER RANGE	INSULATION PUNCH NUMBER	INSULATION ANVIL NUMBER	SINE PART NUMBER	DEUTSCH PART NUMBER
0.120-0.150 [3.05-3.81]	A117-225-0200	A117-325-0200	MPX-3953	DCH1620-02-00
0.105-0.125 [2.67-3.18]	A117-226-0200	A117-326-0200	A117-082-0200	1017-082-0200
0.085-0.111 [2.16-2.82]	A117-227-0200	A117-327-0200	A117-182-0200	1017-182-0200
0.075-0.105 [1.91-2.67]	A117-228-0200	A117-328-0200	A117-225-0200	1017-225-0200
0.063-0.094 [1.62-2.39]	A117-229-0200	A117-329-0200	A117-226-0200	1017-226-0200
0.050-0.075 [1.27-1.91]	A117-230-0200	A117-330-0200	A117-228-0200	1017-228-0200
			A117-229-0200	1017-229-0200
			A117-230-0200	1017-230-0200
			A117-325-0200	1017-325-0200
			A117-326-0200	1017-326-0200
			A117-327-0200	1017-327-0200
			A117-328-0200	1017-328-0200
			A117-329-0200	1017-329-0200
			A117-330-0200	1017-330-0200

NOTES: UNLESS OTHERWISE SPECIFIED

1. ALL DIMENSIONS ARE IN INCHES(mm).
2. FORCES ARE IN POUNDS(LBS) AND NEWTONS(N).
3. "X"= PLATING SUFFIX. SEE INDIVIDUAL CONTACT DRAWING.
4. WIRE STRIP LENGTH: 0.175±0.029(4.43±0.54). BROKEN OR MISSING CONDUCTOR STRANDS ARE NOT ACCEPTABLE. USE A BLADE MICROMETER (0.100[2.54] MIN SPINDLE AND 0.060[0.010][1.50][0.040] ANVIL) TO MEASURE THE CONDUCTOR CRIMP. SEE SECTION AA.
5. CRIMP TENSILE STRENGTH IS DETERMINED AT A PULL RATE SPEED OF 1.00 INCH(2.54) PER MINUTE. INSULATION WINGS ARE REMOVED FOR TEST. ACTUAL CRIMP TENSILE STRENGTH DEPENDS ON WIRE/CONDUCTOR SIZE. VALUES ON THIS SPECIFICATION ARE FOR REFERENCE ONLY.
6. INSULATION DIAMETER RANGE IS DETERMINED BY CONNECTOR AND ITS WIRE SEAL SIZE. SEE CONNECTOR DRAWING FOR INSULATION RANGE.
7. INSULATION CRIMP DIAMETER SHOULD BE THE EQUAL OR LESS THAN THE DIAMETER OF THE WIRE INSULATION (HARD OR TEFLON INSULATION MAY BE AN EXCEPTION). INSULATION CRIMP SHALL NOT AFFECT REMOVAL TOOL PERFORMANCE AND SHALL NOT DAMAGE CONNECTOR GROMMET SEAL.
8. CONDUCTOR TYPE ARE PER SAE J1128(AWG) AND ISO 6122(METRIC)
9. FOR CONTACT MATERIAL AND PERFORMANCE DATA, SEE DRAWING S2-15217.
10. REFER TO S2-15223 AND S2-15224 AND CROSS REFERENCE CHARTS FOR CRIMP TOOL DATA.

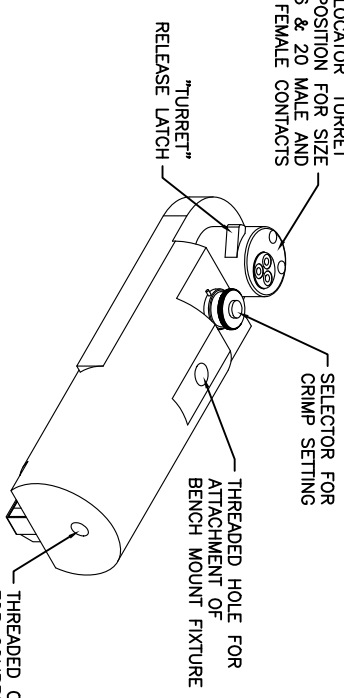
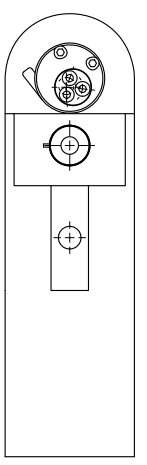


ALL REFERENCES TO DEUTSCH PRODUCTS OR SPECIFICATIONS ARE FOR COMPARISON PURPOSES ONLY, AND REFER TO DEUTSCH INDUSTRIAL PRODUCTS.

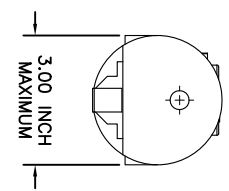
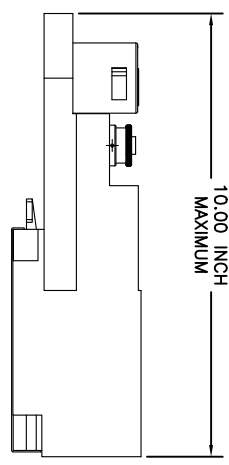
QUANTITY	PART NUMBER	DESCRIPTION	ITEM
MATERIALS LIST			
UNLESS OTHERWISE SPECIFIED			
1) All dimensions are in inches.	SIGNATURES	DATE	
2) 1/16" = 0.0625"	DRAWN: POTER	4/7/09	
3) 1/32" = 0.03125"	CHECKED: RONE	6/8/09	
4) 1/64" = 0.015625"	ENGINEER: BERNIM		
5) Reduction Standard Per: ASME Y14.5	APPROVAL: BERNIM	6/8/09	
6) Form: S2-20020	CUSTOMER:		
7) Material Specification: NA			
PROCESS SPECIFICATIONS:			
THE USE OF THIS DRAWING IS SUBJECT TO THE TERMS AND CONDITIONS OF THE PURCHASE ORDER. ALL DIMENSIONS ARE SUBJECT TO NORMAL TOLERANCES UNLESS OTHERWISE SPECIFIED. DRAWING REVISIONS HERON MW			
CRIMP DATA, STAMPED CONTACTS FOR CRIMPER MPX-3953			
SIZE: TYPICAL DIMENSIONS: 10K/44	SCALE: NONE	S2-15221	SHEET 1 OF 1

REV ZONE		ECO	REVISIONS		DESCRIPTION	DATE	BY	APPR
AI	-	-	RELEASE NUMBER	016571		6/12/09	B.D.B.	M.R.F.

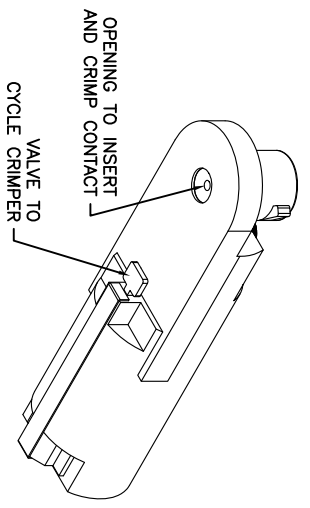
CONTACT LOCATOR "TURRET"
THREE POSITION FOR SIZE
12, 16 & 20 MALE AND
FEMALE CONTACTS



THREADED OPENING
FOR COMPRESSED
AIR FITTING

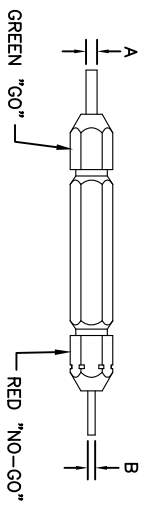


- NOTES:
1. THE CA-5E12 IS A COMPRESSED AIR OPERATED HAND CRIMPER FOR ELECTRICAL CONTACTS. IT IS ADJUSTABLE TO 3 CONTACT SIZES (12, 16 & 20) AND 8 INDENTER CRIMP POSITIONS FOR DIFFERENT WIRE SIZES (12AWG THRU 26 AWG).
 2. 80-120 PSI COMPRESSED AIR.
 3. WEIGHT: 3.1 LBS
 4. SELECTING CONTACT SIZE: PRESS THE RELEASE LATCH ON SIDE OF THE CONTACT LOCATOR "TURRET". ROTATE TO THE DESIRED CONTACT SIZE. THE TOP OF THE "TURRET" IS EMBOSSED WITH THE CONTACT SIZES.
 5. SELECTING WIRE SIZE: GRASP THE SELECTOR AND ROTATE TO THE DESIRED NUMBER.



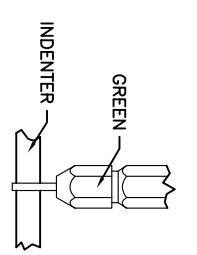
GAGE PART NO.	A GO DIA.	B NO-GO DIA.	SELECTOR NUMBER
G125	.0390	.0440	4

GAGING INSTRUCTIONS
CAUTION!
DO NOT CRIMP GAGE!

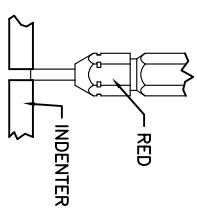


"GO" GAGING: OPERATE TOOL TO FULLY CLOSED POSITION. INSERT "GO" GAGE END AS SHOWN. GAGE MUST PASS FREELY BETWEEN INDENTER TIPS.

"NO-GO" GAGING: OPERATE TOOL TO FULLY CLOSED POSITION. INSERT "NO-GO" GAGE END AS SHOWN. THE "NO-GO" MAY PARTIALLY ENTER THE INDENTER OPENING, BUT MUST NOT PASS COMPLETELY THROUGH THE OPENING.



SELECTOR NUMBER	A GO DIA.	B NO-GO DIA.
1	.0280	.0330
2	.0320	.0370
3	.0360	.0410
4	.0390	.0440
5	.0450	.0500
6	.0520	.0570
7	.0590	.0640
8	.0680	.0730



CONTACT SIZE	LOCATOR "TURRET" POSITION	WIRE COLOR	SELECTOR NUMBER
20-20	RED	1	2
16-22	BLUE	4	5
16-20	BLUE	1	2
16-16	BLUE	4	5
12-16	YELLOW	4	5
12-12	YELLOW		7
			8

QUANTITY PART NUMBER MATERIALS LIST DESCRIPTION ITEM

UNLESS OTHERWISE SPECIFIED	SIGNATURES	DATE
1. All dimensions are in inches.	DATE: BERNUM	6/2/09
2. Pl. SEC 34.00 1 Position 3.1/4"	ORDER: RONE	6/3/09
3. Pl. SEC 34.00 1 Position 3.1/4"	ENGINEER: BERNUM	
4) Rev. SS-20020	APPROVAL: BERNUM	6/3/09
5) Revision Standard Per:	CUSTOMER:	
6) Rev. SS-20020		
7) Rev. SS-20020		
8) Rev. SS-20020		
9) Rev. SS-20020		
10) Rev. SS-20020		
11) Rev. SS-20020		
12) Rev. SS-20020		
13) Rev. SS-20020		
14) Rev. SS-20020		
15) Rev. SS-20020		
16) Rev. SS-20020		
17) Rev. SS-20020		
18) Rev. SS-20020		
19) Rev. SS-20020		
20) Rev. SS-20020		
21) Rev. SS-20020		
22) Rev. SS-20020		
23) Rev. SS-20020		
24) Rev. SS-20020		
25) Rev. SS-20020		
26) Rev. SS-20020		
27) Rev. SS-20020		
28) Rev. SS-20020		
29) Rev. SS-20020		
30) Rev. SS-20020		
31) Rev. SS-20020		
32) Rev. SS-20020		
33) Rev. SS-20020		
34) Rev. SS-20020		
35) Rev. SS-20020		
36) Rev. SS-20020		
37) Rev. SS-20020		
38) Rev. SS-20020		
39) Rev. SS-20020		
40) Rev. SS-20020		
41) Rev. SS-20020		
42) Rev. SS-20020		
43) Rev. SS-20020		
44) Rev. SS-20020		
45) Rev. SS-20020		
46) Rev. SS-20020		
47) Rev. SS-20020		
48) Rev. SS-20020		
49) Rev. SS-20020		
50) Rev. SS-20020		
51) Rev. SS-20020		
52) Rev. SS-20020		
53) Rev. SS-20020		
54) Rev. SS-20020		
55) Rev. SS-20020		
56) Rev. SS-20020		
57) Rev. SS-20020		
58) Rev. SS-20020		
59) Rev. SS-20020		
60) Rev. SS-20020		
61) Rev. SS-20020		
62) Rev. SS-20020		
63) Rev. SS-20020		
64) Rev. SS-20020		
65) Rev. SS-20020		
66) Rev. SS-20020		
67) Rev. SS-20020		
68) Rev. SS-20020		
69) Rev. SS-20020		
70) Rev. SS-20020		
71) Rev. SS-20020		
72) Rev. SS-20020		
73) Rev. SS-20020		
74) Rev. SS-20020		
75) Rev. SS-20020		
76) Rev. SS-20020		
77) Rev. SS-20020		
78) Rev. SS-20020		
79) Rev. SS-20020		
80) Rev. SS-20020		
81) Rev. SS-20020		
82) Rev. SS-20020		
83) Rev. SS-20020		
84) Rev. SS-20020		
85) Rev. SS-20020		
86) Rev. SS-20020		
87) Rev. SS-20020		
88) Rev. SS-20020		
89) Rev. SS-20020		
90) Rev. SS-20020		
91) Rev. SS-20020		
92) Rev. SS-20020		
93) Rev. SS-20020		
94) Rev. SS-20020		
95) Rev. SS-20020		
96) Rev. SS-20020		
97) Rev. SS-20020		
98) Rev. SS-20020		
99) Rev. SS-20020		
100) Rev. SS-20020		

THE USE OF THIS DRAWING IS SPECIFIC TO THE PART AND THE SPECIFICATIONS AND DIMENSIONS ARE SUBJECT TO REVISION. ALL DIMENSIONS REFERRED TO HEREON UNLESS OTHERWISE SPECIFIED SHALL BE IN INCHES.

INSTRUCTIONS FOR CA-5E12 CRIMPER, PNEUMATIC

SIZE: 10K44

SCALE: NONE

S2-15220

SHEET 1 OF 1

REV ZONE		ECO		REVISIONS		DESCRIPTION		DATE	BY	APPR
AI	-	-	-	RELEASE NUMBER	016571	6/12/09	B.D.B.	M.R.F.		

CONTACT LOCATOR
"TURRET"
THREE POSITIONS FOR
SIZE 12, 16 & 20 MALE
AND FEMALE CONTACTS

"TURRET" RELEASE LATCH

6.25 INCH
MAXIMUM
OPEN

2.30 INCH
MAXIMUM
CLOSED

SELECTOR FOR CRIMP
SETTING

1.125 INCH MAX.

9.75 INCH MAXIMUM

1.00 INCH MAX.

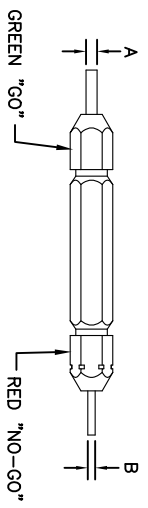
- NOTES:
- THE CA-5D12 IS A HAND OPERATED CRIMPER FOR ELECTRICAL CONTACTS. IT IS ADJUSTABLE TO 3 CONTACT SIZES (12, 16 & 20) AND 8 INDENTER CRIMP POSITIONS FOR DIFFERENT WIRE SIZES (12AWG THRU 26 AWG).
 - WEIGHT: 1.64 LBS
 - SELECTING CONTACT SIZE: PRESS THE RELEASE LATCH ON SIDE OF THE CONTACT LOCATOR "TURRET". ROTATE TO THE DESIRED CONTACT SIZE. THE TOP OF THE "TURRET" IS EMBOSSED WITH THE CONTACT SIZES.
 - SELECTING WIRE SIZE: REMOVE THE LOCKING CLIP. GRASP THE SELECTOR AND ROTATE TO THE DESIRED NUMBER.

CONTACT SIZE	LOCATOR "TURRET" POSITION COLOR	SELECTOR NUMBER								
		1	2	3	4	5	6	7	8	
20-20	RED	1	2	3	4					
16-22	BLUE	4	5	6						
16-20	BLUE	1	2	3	4					
16-16	BLUE				4	5	6			
12-16	YELLOW				4	5	6			
12-12	YELLOW							7		8

GAGING INSTRUCTIONS

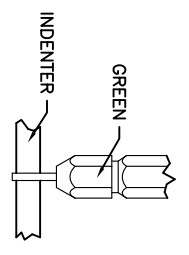
CAUTION!
DO NOT CRIMP GAGE!

GAGE PART NO.	A GO DIA.	B NO-GO DIA.	SELECTOR NUMBER
G125	.0390	.0440	4

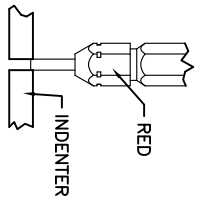


"GO" GAGING: OPERATE TOOL TO FULLY CLOSED POSITION. INSERT "GO" GAGE END AS SHOWN. GAGE MUST PASS FREELY BETWEEN INDENTER TIPS.

"NO-GO" GAGING: OPERATE TOOL TO FULLY CLOSED POSITION. INSERT "NO-GO" GAGE END AS SHOWN. THE "NO-GO" MAY PARTIALLY ENTER THE INDENTER OPENING, BUT MUST NOT PASS COMPLETELY THROUGH THE OPENING.



SELECTOR NUMBER	A GO DIA.	B NO-GO DIA.
1	.0280	.0330
2	.0320	.0370
3	.0360	.0410
4	.0390	.0440
5	.0450	.0500
6	.0520	.0570
7	.0590	.0640
8	.0880	.0730



QUANTITY	PART NUMBER	DESCRIPTION	ITEM
----------	-------------	-------------	------

MATERIALS LIST		SIGNATURES		DATE
UNLESS OTHERWISE SPECIFIED				
1) All dimensions are in inches.				
2) Pl. SEC. 34.00				
3) Pl. SEC. 34.00				
4) Pl. SEC. 34.00				
5) Pl. SEC. 34.00				
6) Pl. SEC. 34.00				
7) Pl. SEC. 34.00				
8) Pl. SEC. 34.00				
9) Pl. SEC. 34.00				
10) Pl. SEC. 34.00				
11) Pl. SEC. 34.00				
12) Pl. SEC. 34.00				
13) Pl. SEC. 34.00				
14) Pl. SEC. 34.00				
15) Pl. SEC. 34.00				
16) Pl. SEC. 34.00				
17) Pl. SEC. 34.00				
18) Pl. SEC. 34.00				
19) Pl. SEC. 34.00				
20) Pl. SEC. 34.00				
21) Pl. SEC. 34.00				
22) Pl. SEC. 34.00				
23) Pl. SEC. 34.00				
24) Pl. SEC. 34.00				
25) Pl. SEC. 34.00				
26) Pl. SEC. 34.00				
27) Pl. SEC. 34.00				
28) Pl. SEC. 34.00				
29) Pl. SEC. 34.00				
30) Pl. SEC. 34.00				
31) Pl. SEC. 34.00				
32) Pl. SEC. 34.00				
33) Pl. SEC. 34.00				
34) Pl. SEC. 34.00				
35) Pl. SEC. 34.00				
36) Pl. SEC. 34.00				
37) Pl. SEC. 34.00				
38) Pl. SEC. 34.00				
39) Pl. SEC. 34.00				
40) Pl. SEC. 34.00				
41) Pl. SEC. 34.00				
42) Pl. SEC. 34.00				
43) Pl. SEC. 34.00				
44) Pl. SEC. 34.00				
45) Pl. SEC. 34.00				
46) Pl. SEC. 34.00				
47) Pl. SEC. 34.00				
48) Pl. SEC. 34.00				
49) Pl. SEC. 34.00				
50) Pl. SEC. 34.00				
51) Pl. SEC. 34.00				
52) Pl. SEC. 34.00				
53) Pl. SEC. 34.00				
54) Pl. SEC. 34.00				
55) Pl. SEC. 34.00				
56) Pl. SEC. 34.00				
57) Pl. SEC. 34.00				
58) Pl. SEC. 34.00				
59) Pl. SEC. 34.00				
60) Pl. SEC. 34.00				
61) Pl. SEC. 34.00				
62) Pl. SEC. 34.00				
63) Pl. SEC. 34.00				
64) Pl. SEC. 34.00				
65) Pl. SEC. 34.00				
66) Pl. SEC. 34.00				
67) Pl. SEC. 34.00				
68) Pl. SEC. 34.00				
69) Pl. SEC. 34.00				
70) Pl. SEC. 34.00				
71) Pl. SEC. 34.00				
72) Pl. SEC. 34.00				
73) Pl. SEC. 34.00				
74) Pl. SEC. 34.00				
75) Pl. SEC. 34.00				
76) Pl. SEC. 34.00				
77) Pl. SEC. 34.00				
78) Pl. SEC. 34.00				
79) Pl. SEC. 34.00				
80) Pl. SEC. 34.00				
81) Pl. SEC. 34.00				
82) Pl. SEC. 34.00				
83) Pl. SEC. 34.00				
84) Pl. SEC. 34.00				
85) Pl. SEC. 34.00				
86) Pl. SEC. 34.00				
87) Pl. SEC. 34.00				
88) Pl. SEC. 34.00				
89) Pl. SEC. 34.00				
90) Pl. SEC. 34.00				
91) Pl. SEC. 34.00				
92) Pl. SEC. 34.00				
93) Pl. SEC. 34.00				
94) Pl. SEC. 34.00				
95) Pl. SEC. 34.00				
96) Pl. SEC. 34.00				
97) Pl. SEC. 34.00				
98) Pl. SEC. 34.00				
99) Pl. SEC. 34.00				
100) Pl. SEC. 34.00				

UNLESS OTHERWISE SPECIFIED

1) All dimensions are in inches.

2) Pl. SEC. 34.00

3) Pl. SEC. 34.00

4) Pl. SEC. 34.00

5) Pl. SEC. 34.00

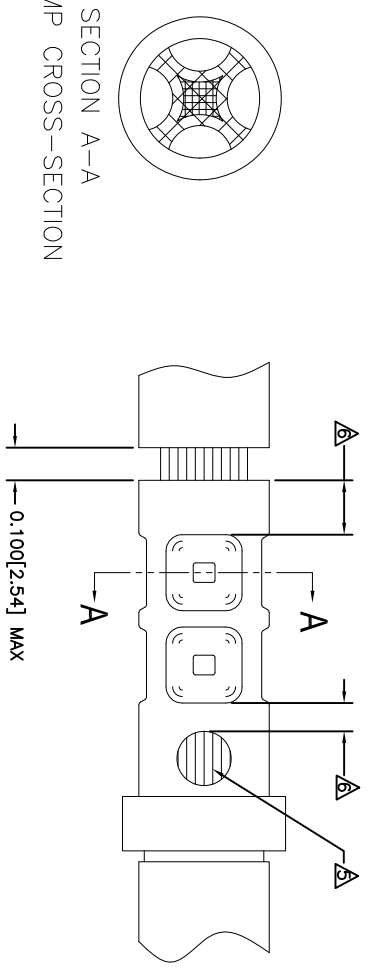
REVOLUTIONS		DESCRIPTION	DATE	BY	APPR
REV	ZONE	ECO	RELEASE NUMBER	B.D.B.	M.R.F.
A1	-	-	016571	6/12/09	

CONTACT P/N	SIZE TYPE	WIRE SIZE	REF. ONLY TENSILE LBS[N]
AT60-202-16XX	16PIN	1.5mm ² 16AWG	35[156]
AT62-201-16XX	16SOC	1.0mm ² 18AWG 0.75mm ² 20AWG	25[111]
		0.50mm ²	20[89]

RECOMMENDED STRIP LENGTH	
CONTACT SIZE	STRIP LENGTH INCH[MM]
16	0.250-0.312[6.35-7.92]

CRIMP TOOLING						
CONTACT SIZE	CRIMP TOOL PART NUMBER	CONTACT LOCATOR "TURRET" POSITION	WIRE SELECTOR NUMBER	GO GAGE INCH[MM]	"NOGO" GAGE INCH[MM]	REMARKS
16	CA-5D12 CA-5E12	BLUE	6	0.052[1.32]	0.057[1.45]	
16	CA-5D12 CA-5E12	BLUE	4	0.039[.991]	0.044[1.12]	SIZE 16 WITH 20 AWG WIRE

- NOTES: UNLESS OTHERWISE SPECIFIED
- 1. MINIMUM +/-0.0005 [0.013] TOLERANCE STEEL GAGE PINS. DO NOT CRIMP GAGE PINS. CLOSE DIE, THEN USE GAGE PINS.
 - 2. WHEN XX=31, CONTACT PLATING IS GOLD WHEN XX=141, CONTACT PLATING IS NICKEL
 - 3. PULL RATE OF 1.0 IN [25.4] PER MINUTE. ACTUAL STRENGTH DEPENDS ON WIRE SIZE.
 - 4. FOR CONTACT PERFORMANCE, MATERIAL SPECIFICATIONS AND APPLICATION DETAILS, SEE DRAWING S2-15217.
 - 5. CONDUCTOR STRANDS MUST BE VISIBLE THRU THE INSPECTION HOLE PRIOR TO CRIMP.
 - 6. PROPER CRIMP TOOLING WILL PRODUCE A CRIMP CENTERED BETWEEN THE INSPECTION HOLE AND CRIMP BARREL END.
 - 7. WIRE SIZES PER SAE J1128 AND J1560 [DIN 72551-6] REFERENCE INSTRUCTION MANUALS S2-15219 AND S2-15220 FOR CA-5D12 AND CA-5E12 HAND AND PNEUMATIC CRIMPER.
 - 8. THE CRIMP HEIGHT DIMENSION AFTER CRIMPING MAY VARY FROM THE VALUES LISTED FOR THE "GO-NOGO" PINS.



QUANTITY	PART NUMBER	DESCRIPTION	ITEM
	MATERIALS LIST		

UNLESS OTHERWISE SPECIFIED		SIGNATURES		DATE	
1) All dimensions are in inches.	DATE	DATE	DATE	DATE	DATE
2) Pl. SEE 34.00	ENGINEER	BERNIM	6/3/09	6/3/09	
3) Pl. SEE 34.01	CHECKER	RONC	6/3/09		
4) Pl. SEE 34.02	ENGINEER	BERNIM	6/3/09		
5) Fabrication Standards Per:	APPROVAL	BERNIM	6/3/09		
6) Pl. SEE 34.03	CUSTOMER				
7) Pl. SEE 34.04					
8) Pl. SEE 34.05					
9) Pl. SEE 34.06					
10) Pl. SEE 34.07					
11) Pl. SEE 34.08					
12) Pl. SEE 34.09					
13) Pl. SEE 34.10					
14) Pl. SEE 34.11					
15) Pl. SEE 34.12					
16) Pl. SEE 34.13					
17) Pl. SEE 34.14					
18) Pl. SEE 34.15					
19) Pl. SEE 34.16					
20) Pl. SEE 34.17					
21) Pl. SEE 34.18					
22) Pl. SEE 34.19					
23) Pl. SEE 34.20					
24) Pl. SEE 34.21					
25) Pl. SEE 34.22					
26) Pl. SEE 34.23					
27) Pl. SEE 34.24					
28) Pl. SEE 34.25					
29) Pl. SEE 34.26					
30) Pl. SEE 34.27					
31) Pl. SEE 34.28					
32) Pl. SEE 34.29					
33) Pl. SEE 34.30					
34) Pl. SEE 34.31					
35) Pl. SEE 34.32					
36) Pl. SEE 34.33					
37) Pl. SEE 34.34					
38) Pl. SEE 34.35					
39) Pl. SEE 34.36					
40) Pl. SEE 34.37					
41) Pl. SEE 34.38					
42) Pl. SEE 34.39					
43) Pl. SEE 34.40					
44) Pl. SEE 34.41					
45) Pl. SEE 34.42					
46) Pl. SEE 34.43					
47) Pl. SEE 34.44					
48) Pl. SEE 34.45					
49) Pl. SEE 34.46					
50) Pl. SEE 34.47					
51) Pl. SEE 34.48					
52) Pl. SEE 34.49					
53) Pl. SEE 34.50					
54) Pl. SEE 34.51					
55) Pl. SEE 34.52					
56) Pl. SEE 34.53					
57) Pl. SEE 34.54					
58) Pl. SEE 34.55					
59) Pl. SEE 34.56					
60) Pl. SEE 34.57					
61) Pl. SEE 34.58					
62) Pl. SEE 34.59					
63) Pl. SEE 34.60					
64) Pl. SEE 34.61					
65) Pl. SEE 34.62					
66) Pl. SEE 34.63					
67) Pl. SEE 34.64					
68) Pl. SEE 34.65					
69) Pl. SEE 34.66					
70) Pl. SEE 34.67					
71) Pl. SEE 34.68					
72) Pl. SEE 34.69					
73) Pl. SEE 34.70					
74) Pl. SEE 34.71					
75) Pl. SEE 34.72					
76) Pl. SEE 34.73					
77) Pl. SEE 34.74					
78) Pl. SEE 34.75					
79) Pl. SEE 34.76					
80) Pl. SEE 34.77					
81) Pl. SEE 34.78					
82) Pl. SEE 34.79					
83) Pl. SEE 34.80					
84) Pl. SEE 34.81					
85) Pl. SEE 34.82					
86) Pl. SEE 34.83					
87) Pl. SEE 34.84					
88) Pl. SEE 34.85					
89) Pl. SEE 34.86					
90) Pl. SEE 34.87					
91) Pl. SEE 34.88					
92) Pl. SEE 34.89					
93) Pl. SEE 34.90					
94) Pl. SEE 34.91					
95) Pl. SEE 34.92					
96) Pl. SEE 34.93					
97) Pl. SEE 34.94					
98) Pl. SEE 34.95					
99) Pl. SEE 34.96					
100) Pl. SEE 34.97					

MATERIALS LIST		SIGNATURES		DATE	
1) All dimensions are in inches.	DATE	DATE	DATE	DATE	DATE
2) Pl. SEE 34.00	ENGINEER	BERNIM	6/3/09	6/3/09	
3) Pl. SEE 34.01	CHECKER	RONC	6/3/09		
4) Pl. SEE 34.02	ENGINEER	BERNIM	6/3/09		
5) Fabrication Standards Per:	APPROVAL	BERNIM	6/3/09		
6) Pl. SEE 34.03	CUSTOMER				
7) Pl. SEE 34.04					
8) Pl. SEE 34.05					
9) Pl. SEE 34.06					
10) Pl. SEE 34.07					
11) Pl. SEE 34.08					
12) Pl. SEE 34.09					
13) Pl. SEE 34.10					
14) Pl. SEE 34.11					
15) Pl. SEE 34.12					
16) Pl. SEE 34.13					
17) Pl. SEE 34.14					
18) Pl. SEE 34.15					
19) Pl. SEE 34.16					
20) Pl. SEE 34.17					
21) Pl. SEE 34.18					
22) Pl. SEE 34.19					
23) Pl. SEE 34.20					
24) Pl. SEE 34.21					
25) Pl. SEE 34.22					
26) Pl. SEE 34.23					
27) Pl. SEE 34.24					
28) Pl. SEE 34.25					
29) Pl. SEE 34.26					
30) Pl. SEE 34.27					
31) Pl. SEE 34.28					
32) Pl. SEE 34.29					
33) Pl. SEE 34.30					
34) Pl. SEE 34.31					
35) Pl. SEE 34.32					
36) Pl. SEE 34.33					
37) Pl. SEE 34.34					
38) Pl. SEE 34.35					
39) Pl. SEE 34.36					
40) Pl. SEE 34.37					
41) Pl. SEE 34.38					
42) Pl. SEE 34.39					
43) Pl. SEE 34.40					
44) Pl. SEE 34.41					
45) Pl. SEE 34.42					
46) Pl. SEE 34.43					
47) Pl. SEE 34.44					
48) Pl. SEE 34.45					
49) Pl. SEE 34.46					
50) Pl. SEE 34.47					
51) Pl. SEE 34.48					
52) Pl. SEE 34.49					
53) Pl. SEE 34.50					
54) Pl. SEE 34.51					
55) Pl. SEE 34.52					
56) Pl. SEE 34.53					
57) Pl. SEE 34.54					
58) Pl. SEE 34.55					
59) Pl. SEE 34.56					
60) Pl. SEE 34.57					
61) Pl. SEE 34.58					
62) Pl. SEE 34.59					
63) Pl. SEE 34.60					
64) Pl. SEE 34.61					
65) Pl. SEE 34.62					
66) Pl. SEE 34.63					
67) Pl. SEE 34.64					
68) Pl. SEE 34.65					
69) Pl. SEE 34.66					
70) Pl. SEE 34.67					
71) Pl. SEE 34.68					
72) Pl. SEE 34.69					
73) Pl. SEE 34.70					
74) Pl. SEE 34.71					
75) Pl. SEE 34.72					
76) Pl. SEE 34.73					
77) Pl. SEE 34.74					
78) Pl. SEE 34.75					
79) Pl. SEE 34.76					
80) Pl. SEE 34.77					
81) Pl. SEE 34.78					
82) Pl. SEE 34.79					
83) Pl. SEE 34.80					
84) Pl. SEE 34.81					
85) Pl. SEE 34.82					
86) Pl. SEE 34.83					
87) Pl. SEE 34.84					
88) Pl. SEE 34.85					
89) Pl. SEE 34.86					
90) Pl. SEE 34.87					
91) Pl. SEE 34.88					
92) Pl. SEE 34.89					
93) Pl. SEE 34.90					
94) Pl. SEE 34.91					
95) Pl. SEE 34.92					
96) Pl. SEE 34.93					
97) Pl. SEE 34.94					
98) Pl. SEE 34.95					
99) Pl. SEE 34.96					
100) Pl. SEE 34.97					

