

[HOME](#)[LOG IN](#)[YOUR CART](#)[CHECK OUT](#)[SERVICE](#)[ABOUT US](#)[Advanced](#)

New Item

SOS TurboFlare

Custom Cable Assemblies

Build Your Own Cable!

Cable Assemblies

- Unshielded Jumpers
- Shielded Patch Cords
- Power_Cords
- Mini_DIN
- Coaxial
- Audio_Extension

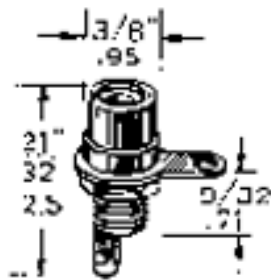
Connectors

- RCA
- UHF_Coaxial
- Standard_MIC
- Primary_Power_Receptacles
- Miniature_Audio
- Gold_Audio
- DC_Power

Jacks and Plugs

- Test_Probes
- Phono_Plugs
- Phono_Jacks
- Phone_Plugs_Subminiature
- Phone_Plugs_Standard
- Phone_Plugs_Miniature
- Phone_Jacks_Subminiature
- Phone_Jacks_Standard
- Phone_Jacks_Miniature
- Phone_Jacks_In-Line
- DIN_Receptacles
- DIN_Plugs
- Binding_Posts

Phono_Jacks

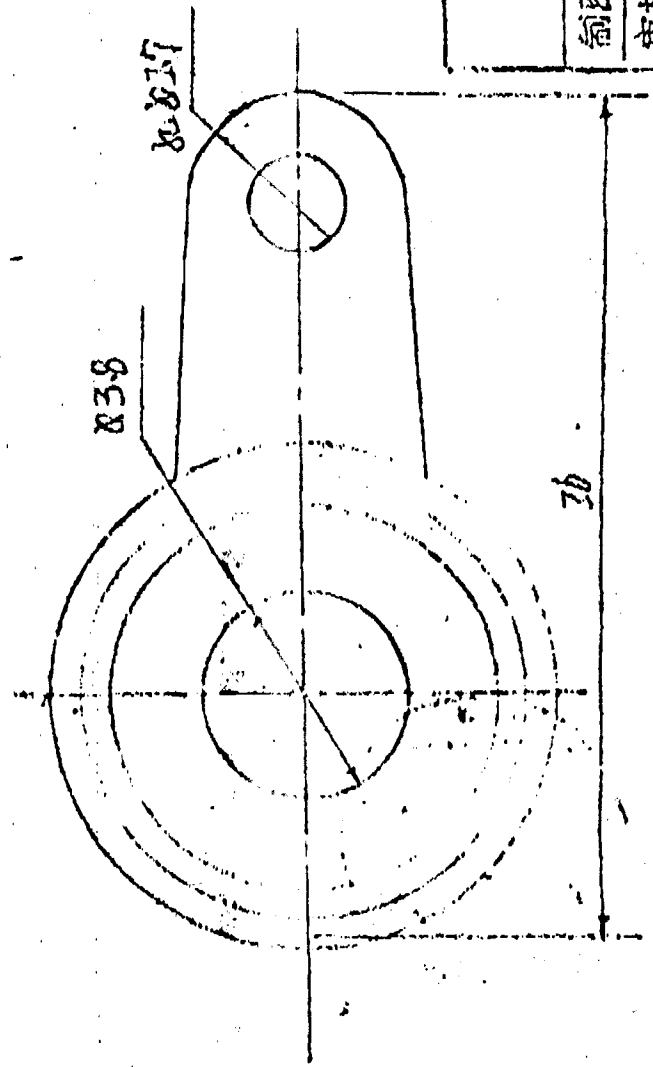
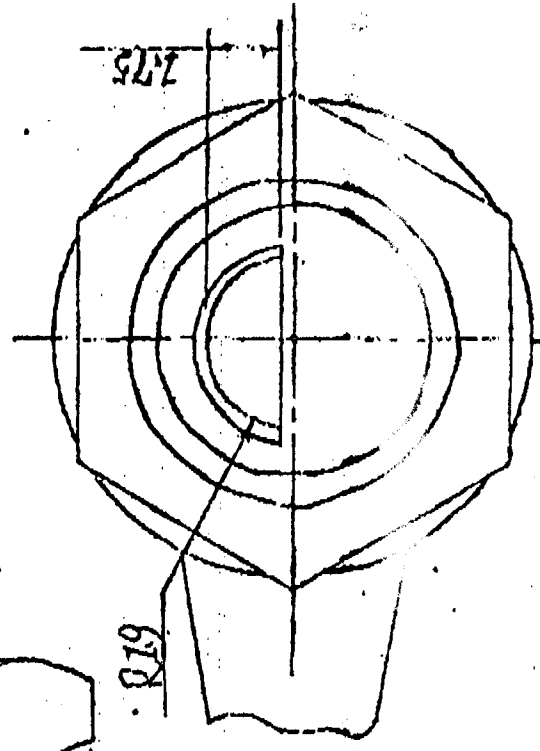
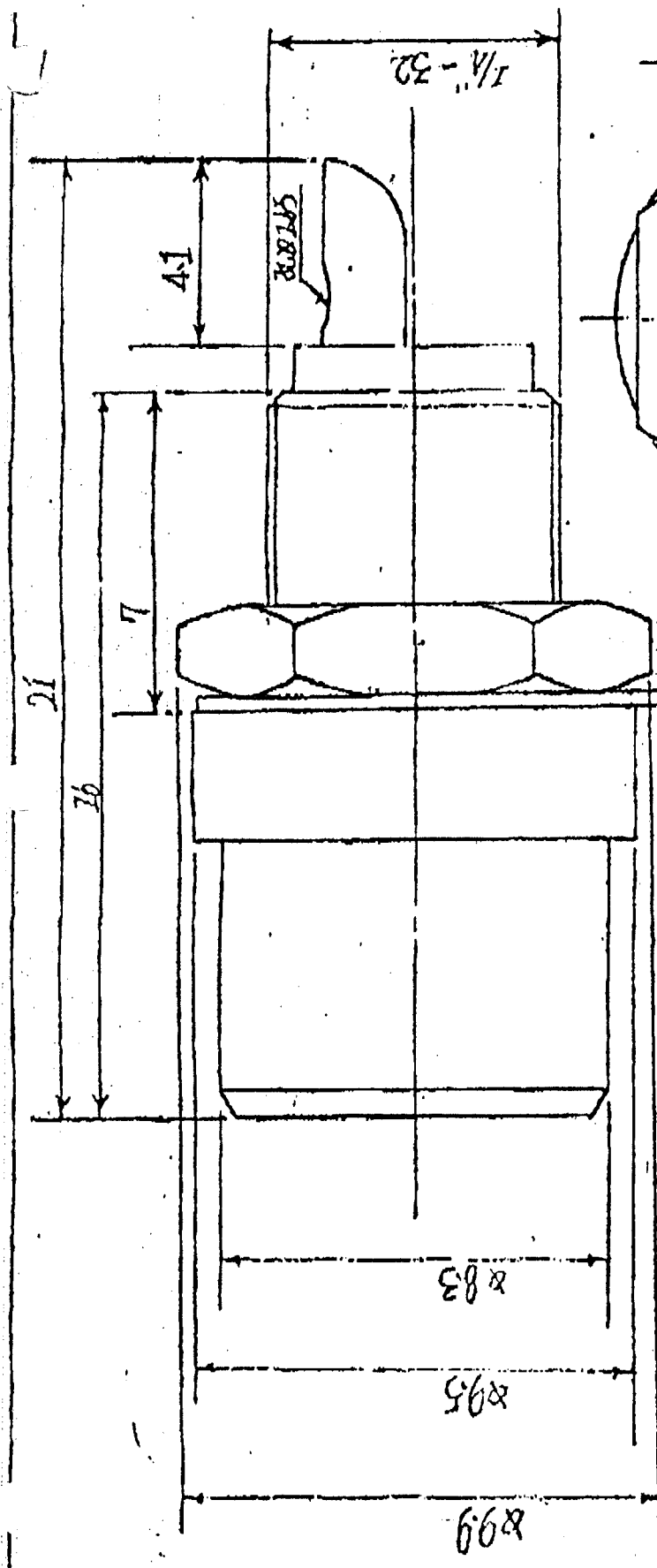


"Phono jack, front mount in 3/8" hole"

[View schematic](#)

Quantity:

White thermoplastic insulation. Nickel-plated brass and brass springs for long life and trouble free plug mating. Extra heavy duty insulators prevent breakdowns.



JR-1611		比例	重量	共	張	NO.
制圖	審核	7:1	355g	第	張	

231-1021 / 231-1022 RCA Jack Chassis Mount