

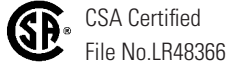
ARN Series — Mono-Lever Switches

**Mono-Lever Switches Ø 1-13/64" (30mm)
Contact Blocks Rated for 600V, 10A**

A4 Switches & Pilot Devices

Key features of the ARN Series include:

- Available in 2-, 3-, and 4-positions.
- Maintained and spring-return modes available.
- Models available with interlock mechanism to prevent inadvertent actuation.



Specifications	Operating Temperature	-25° to 50°C (without freezing)	
	Insulation Resistance	100MΩ	
	Contact Rating	Rated Voltage: Current	110VDC: 3A 24V AC/DC: 10A 120VAC: 10A 240VAC: 6A 480VAC: 2A 600VAC: 1A
		Insulation Voltage	600V AC/DC
		Rated Thermal Current	10A
		Electrical Life	Over 500,000 operations

Part Numbering Guide (Assembled)

Part Numbering Guide: Assembled Mono-Levers

Example: Part Number ARN4-1012-10.00.02.11-B

ARN **4** - **1012** - **10.00.02.11**

- ① Type ② No. of Contact Blocks ③ Lever Action ④ Contact Arrangement

	Description	Code	Remarks		
① Type	Standard Lever	ARN	Interlocking lever prevents inadvertent operation.		
	Short Lever	ARNS			
	Interlocking Lever	ARNL			
② No. of Contact Blocks	—	1 2 3 4	Each contact block contains two independent contacts.		
	③ Lever Action	Blocked		0	Specify in this order: Up.Right.Down.Left
		Maintained		1	
		Spring Return		2	
④ Contact Arrangement	No contacts	00	Specify the number of contacts to be activated in all active (non-blocked) positions: Up.Right.Down.Left		
	1 NO contact	10			
	1 NC contact	01			
	1 NO and 1 NC contact	11			
	2 NO contacts	20			




Mono-Lever Switches (Sub-Assembled)



A4

Switches & Pilot Devices

Part Numbers: Standard Mono-Lever Operators

Operator Type	Lever Operation Mode	Part Number
 Standard Lever	2-Position manual return 3-Position manual return 4-Position manual return	ARN0-1010-B ARN0-1110-B ARN0-1111-B
	2-Position spring return 3-Position spring return 4-Position spring return	ARN0-2020-B ARN0-2220-B ARN0-2222-B
 Short Lever	2-Position manual return 3-Position manual return 4-Position manual return	ARNS0-1010-B ARNS0-1110-B ARNS0-1111-B
	2-Position spring return 3-Position spring return 4-Position spring return	ARNS0-2020-B ARNS0-2220-B ARNS0-2222-B
 Interlocking Lever	2-Position manual return 3-Position manual return 4-Position manual return	ARNL0-1010-B ARNL0-1110-B ARNL0-1111-B
	2-Position spring return 3-Position spring return 4-Position spring return	ARNL0-2020-B ARNL0-2220-B ARNL0-2222-B



Part Numbers: Contact Blocks

Contact Arrangement	Part Number
2NO contacts	BR-1E
1NO & 1NC contact	BR-2E
2NC contacts	BR-3E
1NO early make contact	BR-1EM



To calculate the number of contact blocks required, add the number of NO and NC contacts on each pair of adjoining positions (up + right, right + down, down + left, and left + up). The largest of the four sums is the number of contact blocks required. Up to four contact blocks can be mounted.

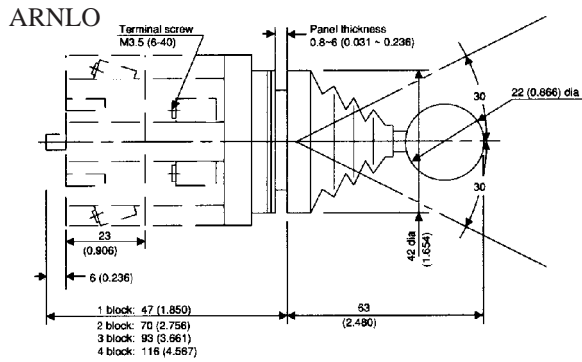
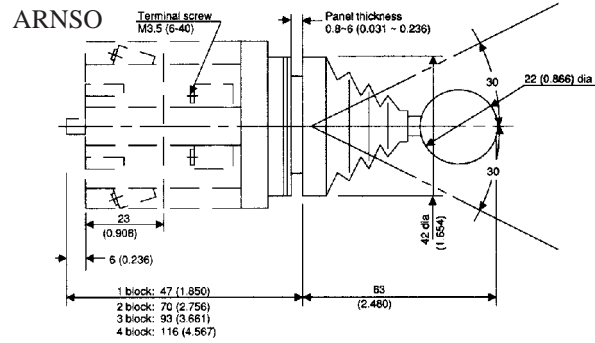
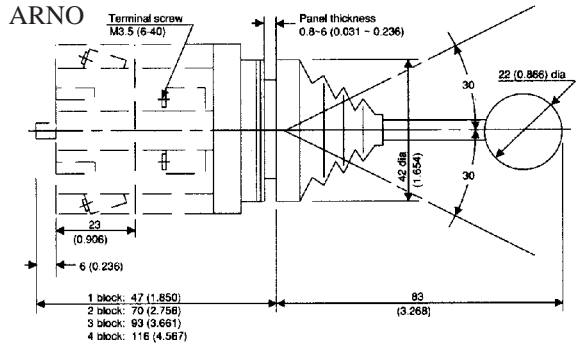
Replacement Parts

Item	Part Number
 Bellows	ARN0, ARNS0 (standard & short lever) ARN-BL
	ARNL0 (Interlocking) ARNL-BL (comes in 2 pieces)
 Knob (ball)	All Models Knob (ball) ARNB-B

Dimensions — ARN Series

A4

Switches & Pilot Devices



Mounting Hole

ARNO
ARNSO
ARNLO

