

Item # P32-1026 115VAC, panel mount, lock and key reset



115VAC, panel mount, lock and key reset

A 6 figure general purpose, rugged, electromechanical counter, either panel or base mounted, with manual knob reset, key reset, or non-reset. Frame and housing provides rigid support for accurate alignment and trouble-free use. Distinctive numerals enhance visibility under adverse viewing conditions.

Specifications

Model No.	10
Mounting	Panel Mount
Display	6 Figures, white on black, 0.19 inch (5mm) high
Display Height	0.19 Inch
Display Height	5 mm
No. of Digits	6
Voltage	115 VAC
Tolerance- Voltage	± 10%, but not to exceed 10 volts
Power	7.8 watts (nominal)
Reset Type	Lock and key
Speed	1000 counts/minute (min. 30ms - on, 30ms - off)
Operating Temperature	-15 to +140 °F
Operating Temperature	-26 to +60 °C
Approvals	UL Recognized, CSA Certified, CE Compliant
Termination	(2) No. 22 AWG 105° C wire leads, 8 inch (203mm) long
Weight	18 to 22 oz
Weight	510 to 624 gm
Operating Life	Beyond 50 million counts
Stock Availability	Yes
Panel Cutout	4.88 x 1.75 Inch
Panel Cutout	124.0 x 44.5 mm



Description

A 6 figure general purpose, rugged, electromechanical counter, either panel or base mounted, with manual knob reset, key reset, or non-reset. Frame and housing provides rigid support for accurate alignment and trouble-free use. Distinctive numerals enhance visibility under adverse viewing conditions.

Features

- Panel or base mount
- Rigid support for accurate alignment
- Enhanced visibility
- Manual knob, key or non-reset

Options

- Voltages
- Lead lengths
- Terminations
- Mounting
- 1071-024S - additional key for model 1026

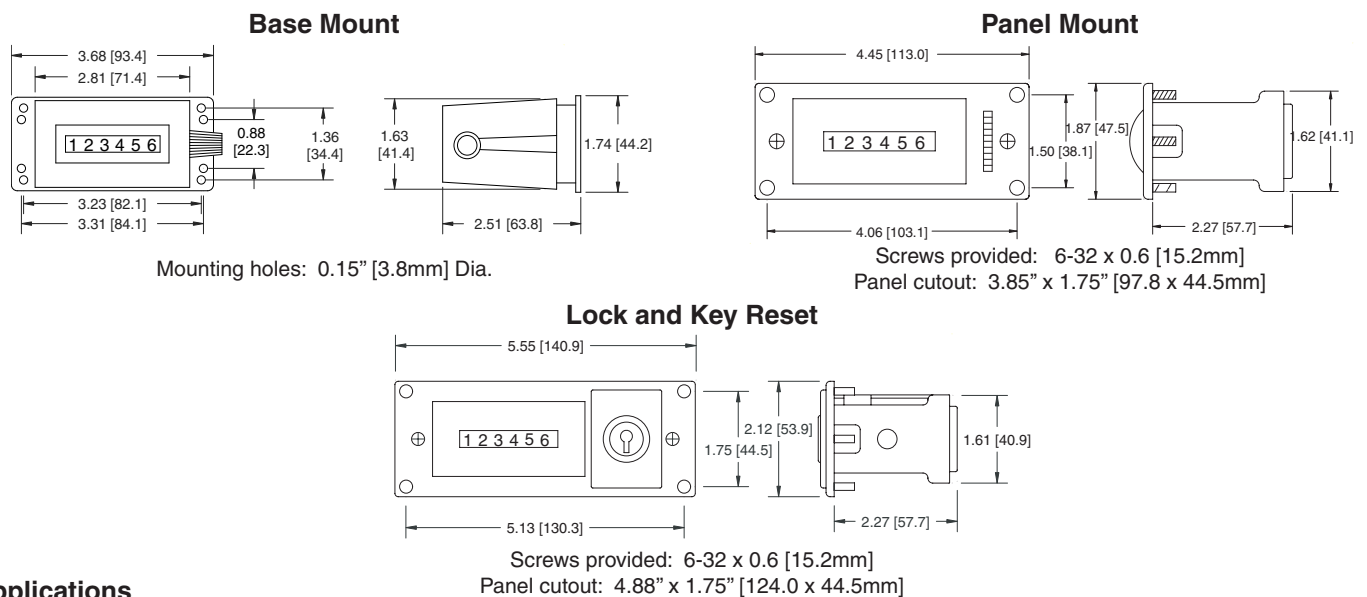
Specifications

Figures:	6 figures, white on black, 0.19" [5mm] high	Mounting:	Base or panel
Reset:	Knob, lock and key, or non-reset	Terminations:	(2)#22 AWG 105°C wire leads, 8" [203mm] long
Speed:	1,000 counts/minute (min. 30ms - on, 30ms - off)	Operating Life:	Beyond 50 million counts
Voltage:	24, 115, 230 VAC or 24 VDC (+/- 10%, but not to exceed 10 volts)	Temp. Range:	-15°F to +140°F [-26°C to +60°C]
Power:	7.8 watts (nominal)	Approvals:	UL Recognized, CSA Certified, CE Compliant
		Weight:	18 to 22 oz. [510 to 624g]

Models	Description	Models	Description
1-1006	230VAC, base mount, knob reset	P3-1006	24VAC, panel mount, knob reset
2-1006	115VAC, base mount, knob reset	P8-1006	24VDC, panel mount, knob reset
3-1006	24VAC, base mount, knob reset	P2-1016	115VAC, panel mount, non-reset
8-1006	24VDC, base mount, knob reset		
2-1016	115VAC, base mount, non-reset	P31-1026	230VAC, panel mount, lock and key reset
		P32-1026	115VAC, panel mount, lock and key reset
P1-1006	230VAC, panel mount, knob reset	P33-1026	24VAC, panel mount, lock and key reset
P2-1006	115VAC, panel mount, knob reset	P38-1026	24VDC, panel mount, lock and key reset

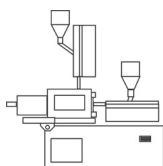
* Items in bold are normally in factory stock.

Dimensions

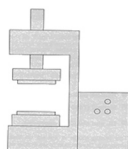


Applications

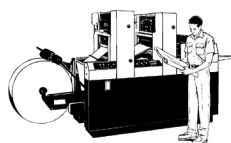
Molding machines



Punch press



Printing presses



Test labs



Secondary Machines





Description

A 7 figure, rugged, electromechanical counter, either panel or base mounted, with manual knob reset, key reset, or non-reset. Frame and housing provides rigid support for accurate alignment and trouble-free use. Large, easy-to-read numerals assure readability.

Features

- 7 figure
- Panel or base mount
- Rigid support for accurate alignment
- Large easy to read numerals

Options

- Voltages
- Lead lengths
- Terminations
- Wheel color

Specifications

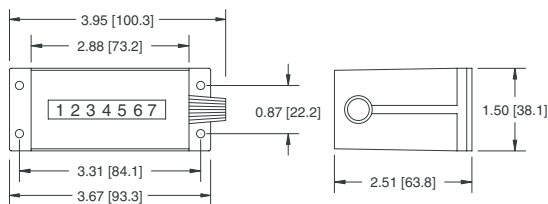
Figures: 7 figures, white on black, 0.19" [5mm] high
Reset: Knob, lock and key, or non-reset
Speed: 1,000 counts/minute
 (min. 30ms - on, 30ms - off)
Voltage: 24, 115, 230 VAC or 24 VDC
 (+/- 10%, but not to exceed 10 volts)
Power: 7.8 watts (nominal)

Mounting: Base, panel, or behind the panel
Terminations: (2)#22 AWG 105°C wire leads, 8" [203mm] long
Operating Life: Beyond 50 million counts
Temp. Range: -15°F to +140°F [-26°C to +60°C]
Approvals: UL Recognized, CSA Certified, CE Compliant
Weight: 14 to 18 oz. [397 to 510g]

Models	Description	Models	Description
1-1007	230VAC, base mount, knob reset	P2-1007	115VAC, panel mount, knob reset
2-1007	115VAC, base mount, knob reset	P2-1027	115VAC, panel mount, lock and key reset
3-1007	24VAC, base mount, knob reset	P8-1027	24VDC, panel mount, lock and key reset
8-1007	24VDC, base mount, knob reset	R2-1007	115VAC, behind the panel, knob reset
2-1017	115VAC, base mount, non-reset	R2-1017	115VAC, behind the panel, non-reset

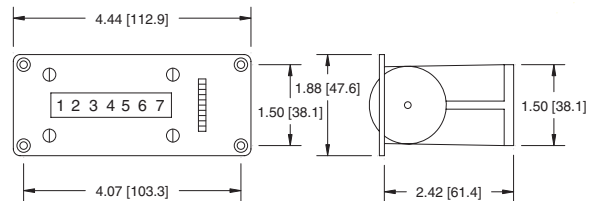
Dimensions

Base Mount



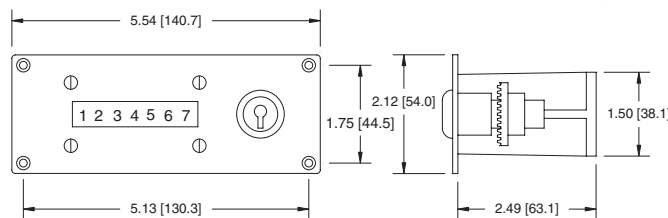
Mounting holes: 0.15" [3.8mm] Dia.

Panel Mount



Screws provided: 6-32 x 0.6 [15.2mm]
Panel cutout: 3.85" x 1.75" [97.8 x 44.5mm]

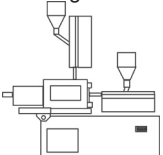
Lock and Key Reset



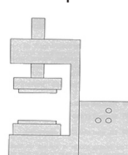
Screws provided: 6-32 x 0.6 [15.2mm]
Panel cutout: 4.88" x 1.75" [124.0 x 44.5mm]

Applications

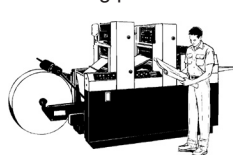
Molding machines



Punch press



Printing presses



Test labs



Secondary Machines

