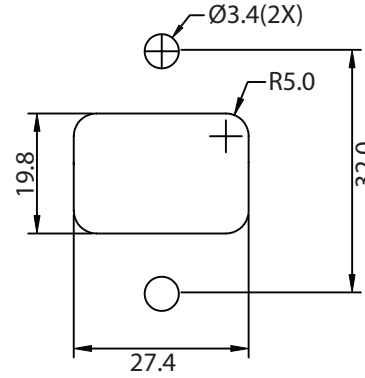
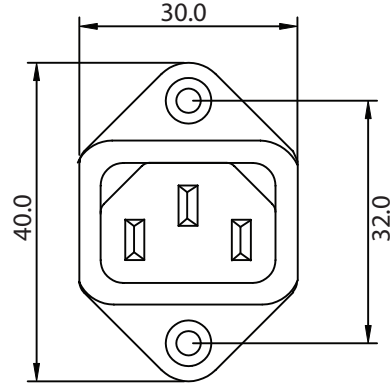
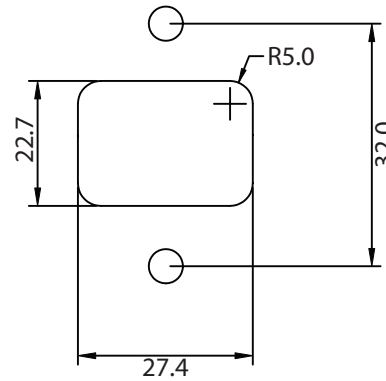
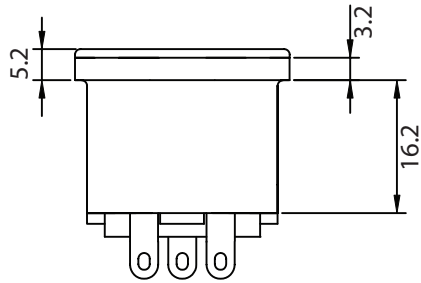


THESE DRAWINGS ARE THE PROPERTY OF QUALTEK ELECTRONICS AND NOT TO BE REPRODUCED FOR OR COMMUNICATED TO A THIRD PARTY WITHOUT THE EXPRESS WRITTEN PERMISSION OF AN OFFICER OF QUALTEK ELECTRONICS.

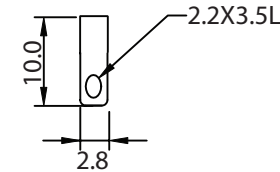
| REVISION | | | |
|----------|-----------------|----------|----------|
| REV. | DESCRIPTION | DATE | APPROVED |
| B | RoHS Compliancy | 06-01-06 | DP |
| | | | |



FRONT PANEL CUTOUT



REAR PANEL CUTOUT



NOTES:

MATERIAL:

MOLDING: NYLON, FLAMMABILITY RATING UL 94V-0
 CONTACTS: BRASS, PINS NICKEL PLATED, TAGS TIN PLATED
 RATING: 10A 250V AC
 CONTACT RESISTANCE: <10m OHM
 INSULATION RESISTANCE: >10³ M OHM
 A.C. BREAKDOWN:
 POLE-POLE: 5kV
 POLES-PANEL: 4.0kV
 OPERATING TEMPERATURE: -40° C TO +70° C
 MAX. PIN TEMPERATURE: +65° C
 APPROVALS: UL, CSA, VDE
 RoHS COMPLIANT

CONTROLLED

| Dim range (mm) | Tolerance +/- (mm) | Qualtek Electronics Corp. PPC DIVISION | | |
|----------------|--------------------|---|----------------|-----------------|
| | | Part Number: | 702-00/28 | RoHS Compliant |
| 0-1 | 0.15 | Description: AC RECEPTACLE | | |
| 1-6 | 0.20 | | | |
| 6-18 | 0.30 | UNIT: mm | REV. B | |
| 18-50 | 0.50 | Drawn / Date | Checked / Date | Approved / Date |
| 50-120 | 0.70 | B.ZHANG | 05-29-02 | JJH / 05-29-02 |
| 120-250 | 0.90 | 05-29-02 | 05-29-02 | 05-29-02 |
| 250-500 | 1.20 | 05-29-02 | 05-29-02 | 05-29-02 |