

Fuse Blocks, 5 x 20 and 5 x 25 mm

Altech fuse terminals are also available with light indication - CSFL4U(L). A specially designed built-in circuit gives light indication in the event of fuse blow out. Thus, fault in a circuit can be easily located.

However, an application of such terminals must take into consideration residual current flow.

DDFL4U - Double Level Fuse Terminal with fuse link on the top level has a separate feed through terminal at the lower level. This eliminates use of an additional feed through terminal.

In DDFL4U(E), specially designed built in circuit gives light indication in the event of a fuse blow out at the top level. The terminal provides separate feed through connection possibility at the lower level.

DDFL4U(LR): This is a modified version of DDFL4U(E) terminal where in two equipotential connection points are available on both ends of the terminal.

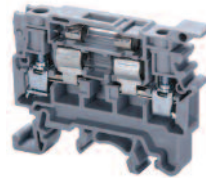
Important:

The disconnecting device is not suitable for interrupting load. The supply must be switched off before operating the slide link/lever.

† Fuses are sold separately Altech, see pages 23-24.



CSFL4U	CSFL4U(L)*
--------	------------



† Fuse not included.



† Fuse not included.

Terminal Width	8 mm	8 mm
Height x Length	43 x 58 mm	43 x 58 mm
Stripping Length	9.5 mm	9.5 mm
Insulation Material	Polyamide 6.6	Polyamide 6.6
Type of Connection	2 screw clamps	2 screw clamps
LED Voltage		24V AC/DC, 48V AC/DC, 110V AC/DC, 220V AC, 300V AC

Type of Fuse Used	Ø5x20, Ø5x25 mm			Ø5x20, Ø5x25 mm		
Approvals						
Wire Range	22-10 AWG	0.5-4 sq.mm	22-10 AWG	22-10 AWG	0.5-4 sq.mm	22-10 AWG
Voltage Rating	600 V	500 V	600 V	600 V	500 V	600 V
Current Rating	6.3 A	6.3 A	10 A	6.3 A	6.3 A	10 A
Torque	7 lb-in	0.5 Nm	7 lb-in	7 lb-in	0.5 Nm	7 lb-in

Other Approvals

Terminal Block

End Plate	
Isolation Partition	
DIN Rail for ordering information refer to page 70	

End Stop for ordering information refer to page 72

Internal Jumper	2 pole
	3 pole
	4 pole
	10 pole

Insulated Internal Jumper	2 pole
	3 pole
	4 pole
	10 pole

Current Bar	2 pole
	3 pole
	4 pole
	10 pole

Shorting Sleeve & Screw

External Jumper	2 pole
	3 pole
	4 pole
	10 pole

Marking Tags (MTType) (MTType on Lever)

Cat. No.	Std. Pk.	Cat. No.	Std.
CSFL4U	100	CSFL4U(L)*	50
EPCSFL4U	50	EPCSFL4U	50
PPCSFL4U	50	PPCSFL4U	50
CA702	50	CA702	50
CA802	50	CA802	50
CA711/2	100	CA711/2	100
CA711/3	100	CA711/3	100
CA711/4	50	CA711/4	50
CA711/10	20	CA711/10	20
MT8	100	MT8	100
MT2	100	MT2	100

COLOR BLOCKS

(other than grey standard)

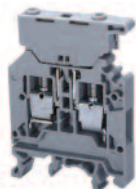
When ordering please add color suffix to Cat. No.

Example: *CTS2.5U-N/R*

Color	Ordering Suffix
Red	R
Blue	BU
Black	BL
Orange	O
Green	G
Yellow	Y
White	W
Beige	BG
Dark Brown	DB

* Add required voltage to part number as a suffix. i.e. CSFL4U(L)/24 for 24V AC/DC.

CSFL6U



† Fuse not included.

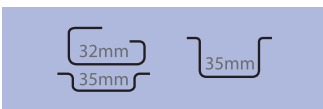
8 mm
60 x 43 mm
9.5 mm
Polyamide 6.6
2 screw clamps

Ø5x20, Ø5x25 mm

22-8 AWG	1.5-6 sq.mm	22-8 AWG
300 V	500 V	300 V
10 A	6.3 A	10 A
14 lb-in	0.8 Nm	14 lb-in



Cat. No.	Std. Pk.
CSFL6U	50
EPCSFL6U	50



CA702	50
CA802	50

CA710/2	100
CA710/3	100
CA710/4	100
CA710/10	25

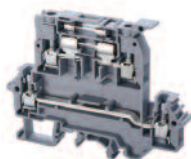
CA703/6	100
CA704/6	100
CA705/6	100
CA737/10	100

CA707/S/Q/3	100
-------------	-----

CA711/2	100
CA711/3	100
CA711/4	50
CA711/10	25

MT8	100
MT6	100

DDFL4U



† Fuse not included.

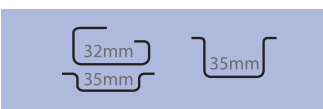
8 mm
66 x 88 mm
9.5 mm
Polyamide 6.6
4 screw clamps

Ø5x20, Ø5x25 mm

22-10 AWG	0.5-4 sq.mm	22-10 AWG
600 V	500 V	600 V
6.3 A	6.3 A	6.3 A
35 A	32 A	35 A
7 lb-in	0.5 Nm	7 lb-in



Cat. No.	Std. Pk.
DDFL4U	20
EPDDFL4U	20



CA702	50
CA802	50

CA729/2	100
CA729/3	50
CA729/4	50
CA729/10	10

CA749/2	100
CA749/3	50
CA749/4	50
CA749/10	10

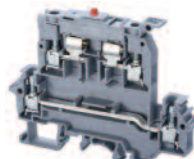
CA703/6	100
CA704/6	100
CA705/6	100
CA737/10	100

CA707/S/Q/3	100
-------------	-----

CA711/2	100
CA711/3	100
CA711/4	50
CA711/10	25

MT8	100
MT2	100

DDFL4U(E)*



† Fuse not included.

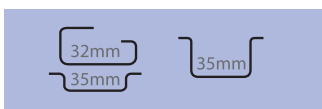
8 mm
66 x 88 mm
9.5 mm
Polyamide 6.6
4 screw clamps
24V AC/DC, 48V AC/DC, 110V AC/DC, 220V AC

Ø5x20, Ø5x25 mm

22-10 AWG	0.5-4 sq.mm	22-10 AWG
600 V	500 V	600 V
6.3 A	6.3 A	6.3 A
35 A	32 A	35 A
7 lb-in	0.5 Nm	7 lb-in



Cat. No.	Std. Pk.
DDFL4U(E)*	20
EPDDFL4U	20



CA702	50
CA802	50

CA729/2	100
CA729/3	50
CA729/4	50
CA729/10	10

CA749/2	100
CA749/3	50
CA749/4	50
CA749/10	10

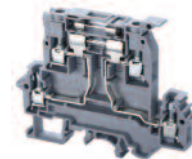
CA703/6	100
CA704/6	100
CA705/6	100
CA737/10	100

CA707/S/Q/3	100
-------------	-----

CA711/2	100
CA711/3	100
CA711/4	50
CA711/10	25

MT8	100
MT2	100

DDFL4ULR



† Fuse not included.

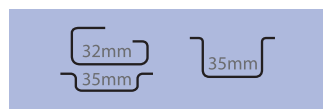
8 mm
66 x 88 mm
9.5 mm
Polyamide 6.6
4 screw clamps

Ø5x20, Ø5x25 mm

22-10 AWG	0.5-4 sq.mm	22-10 AWG
600 V	500 V	600 V
6.3 A	6.3 A	6.3 A
7 lb-in	0.5 Nm	7 lb-in



Cat. No.	Std. Pk.
DDFL4ULR	20
EPDDFL4U	20



CA702	50
CA802	50
CA202	50

CA730/2	100
CA730/3	50
CA730/4	50
CA730/10	10

CA740/2	100
CA740/3	50
CA740/4	50
CA740/10	10

CA703/7	100
CA704/7	100
CA705/7	100
CA738/10	100

CA707/S/Q/8	100
-------------	-----

CA711/2	100
CA711/3	100
CA711/4	50
CA711/10	25

MT8	100
MT2	100