

CHASSIS MOUNT



Primary Power Components Division

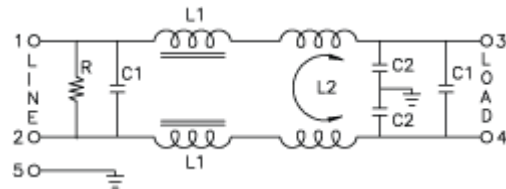
[EMI Filter Cross Reference](#)

[EMI Filter Inquiry Form](#)

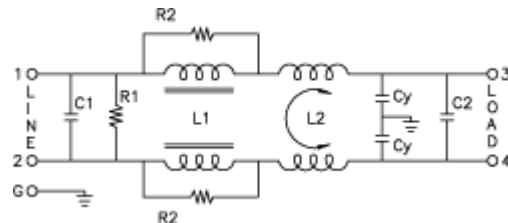
**RoHS
Compliant**

848 Series Multi-Purpose Filters

A compact filter providing noise suppression in industrial environments



3 - 6 - 10 AMP



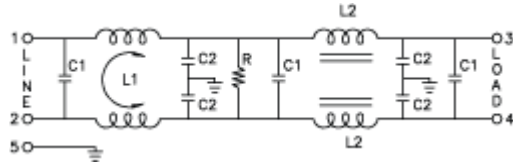
20 AMP

Part Number		Similar to Corcom	Amp Rating	Size L x W x H
848-03/001		10EC1	3	3.25 x 1.90 x 1.15
848-06/002		10ED1	6	3.25 x 1.90 x 1.15
848-10/003		10EEA1	10	3.75 x 2.06 x 1.54

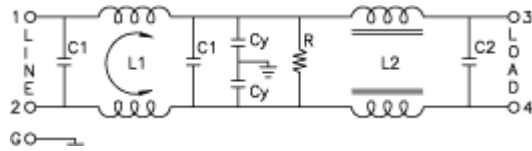
848-20/004		10EEB1	20	5.25 x 4.14 x 1.54
------------	--	--------	----	--------------------

849 Series Multi-Purpose Filters

A compact filter providing noise suppression in industrial environments



3 - 6 - 10 AMP

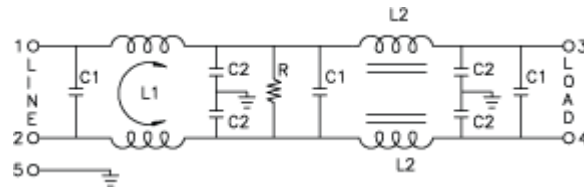


20 AMP

Part Number		Similar to Corcom	Amp Rating	Size L x W x H
849-03/001		3MV1 / 3VVI	3	3.25 x 1.90 x 1.15
849-06/002		6MV1 / 6VV1	6	3.25 x 1.90 x 1.15
849-10/003		10MV1 / 10VV1	10	3.25 x 1.90 x 1.54
849-20/004		20MV1 / 20VV1	20	5.25 x 4.14 x 1.54

850 Series Multi-Purpose Filters

A compact filter providing noise suppression in industrial environments

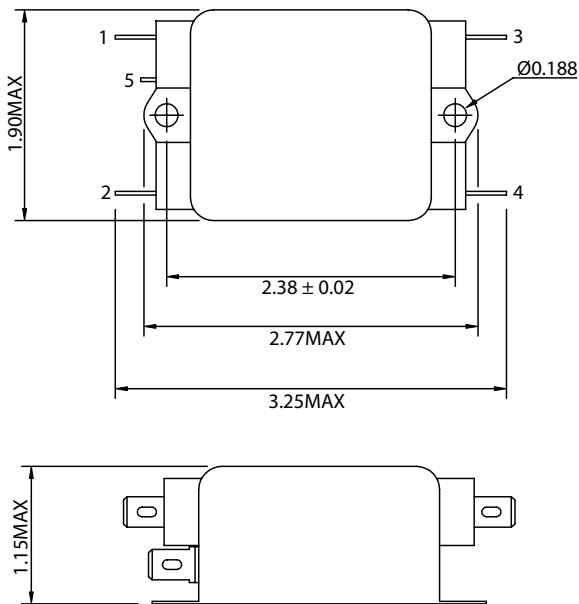


3 - 6 - 10 AMP

THESE DRAWINGS ARE THE PROPERTY OF QUALTEK ELECTRONICS AND NOT TO BE REPRODUCED FOR OR COMMUNICATED TO A THIRD PARTY WITHOUT THE EXPRESS WRITTEN PERMISSION OF AN OFFICER OF QUALTEK ELECTRONICS.

REVISION		
REV.	DESCRIPTION	APPROVED
B	RoHS Compliancy	DP

PHYSICAL DIMENSIONS:

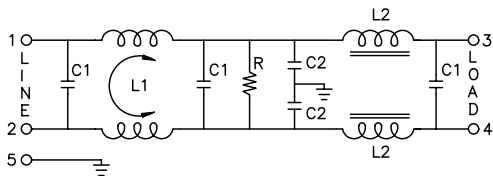


ELECTRICAL CHARACTERISTICS:

- 1-1. VOLTAGE RATING.....115/250VAC
 - 1-2. CURRENT RATING
 A. @ 115 VAC.....6 A RMS MAX
 B. @ 250 VAC.....6 A RMS MAX
 - 1-3. OPERATING FREQUENCY.....50/60Hz
 - 1-4. LEAKAGE CURRENT: EACH LINE TO GROUND
 A. @ 115 VAC 60Hz.....0.45 mA MAX
 B. @ 250 VAC 50Hz.....0.90 mA MAX
 - 1-5. HIPOT RATING (FOR ONE MINUTE)
 A. LINE TO GROUND.....2250 VDC
 B. LINE TO LINE.....1450 VDC
 - 1-6. MINIMUM INSERTION LOSS IN dB: (AT 50 OHM SYSTEM)
- | FREQ. MHz | .01 | .05 | .10 | .15 | .50 | 1.0 | 5.0 | 10 | 30 |
|--------------|-----|-----|-----|-----|-----|-----|-----|----|----|
| COM. MODE dB | 3 | 20 | 25 | 25 | 40 | 50 | 55 | 55 | 40 |
| DIF. MODE dB | 0 | 10 | 20 | 25 | 35 | 50 | 55 | 55 | 50 |
- 1-7. OPERATING TEMPERATURE.....-25° TO +85° C
 - 1-8. SAFETY:
 - 1-9. RoHS COMPLIANT

CONTROLLED

SCHEMATIC:



- L1: 1.7mH
- L2: 70.0uH
- C1: 0.22uF
- C2: 3300+2200pF
- R: 330KΩ

Dim range (mm)		Tolerance +/- (mm)	Qualtek Electronics Corp. PPC DIVISION	
0-1	0.15	0.15	Part Number: 849-06/002	
1-6	0.20	0.20	Description: EMI FILTER	
6-18	0.30	0.30	UNIT: in	
18-50	0.50	0.50	Drawn / Date	
50-120	0.70	0.70	B.ZHANG	
120-250	0.90	0.90		
250-500	1.20	1.20		