

▼ Solutions for Electronic Specialty Markets (ESM)

▼ Product Catalog for Electronic Specialty Markets

- 3M™ Electronic Specialty Markets - New Product Releases
- 3M™ Abrasives
- 3M™ Adhesives, Cleaners & Compounds
- 3M™ Breadboards & Test Clips
- 3M™ Cable & Assemblies
- 3M™ Copper Interconnects
- 3M™ Fiber Optics
- 3M™ Fire Protection
- 3M™ Heat Shrink
- 3M™ Identification Systems
- 3M™ Occupational Health & Safety Products
- 3M™ Protective Bumpers
- 3M™ Reclosable Fasteners
- 3M™ Splicing, Terminating & Ducting
- 3M™ Static Control
- 3M™ Tapes
- 3M™ Terminals, Kits & Tools
- 3M™ Vacuums & Accessories
- 3M™ Warehousing & Packaging Supplies
- 3M™ Wire Connectors

◦ Other Tools

- What's New
- Sales Contacts
- U.S. Distributors

[Product Catalog for Electronic Specialty Markets](#) > [3M™ Wire Connectors](#) > [3M™ Insulation Displacement Connectors and Tools](#) > [3M™ Scotchlok™ IDC Connectors for Electrical Applications](#) > [3M™ Scotchlok™ 562 Electrical IDC, Double Run or Tap, Flame Retardant](#) >

[Printer-friendly format](#) **3M™ Scotchlok™ Electrical IDC 562-BOX, Double Run or Tap, Flame Retardant**



[\[click to enlarge\]](#)

12 (3,0) AWG Solid/Stranded, 10 (4,0) AWG Stranded, Yellow, 50 per box, 1000 per case

GTIN(UPC/EAN) : 0 00 54007 11032 3
3M Id : 80-6011-0317-1

Additional Information

Flame retardant. Use to electrically connect a wire end (tap) to a through (run) wire and insulate the connection. Maximum insulation O.D. diameter of 0.190 inches (4,82 mm) and a operating temperature of 221°F (105°C). The suggested application tool for this connector is the E-9BM Crimping Tool.

Learn More . . .

[Packaging Data](#)

[3M™ Scotchlok™ 562 Self-Stripping Electrical Tap Connect - Data Sheet \(PDF 184.0 K\)](#)

[3M™ Scotchlok™ 562 Self-Stripping Electrical Tap Connect - Instruction Sheet \(PDF 184.0 K\)](#)

[562orderinginfo.pdf - Product Selection Guide \(PDF 9.0 K\)](#)

[Ordering Information for Scotchlok™ 562 Insulation Displacement - Product Selection Guide \(HTML 1.5 K\)](#)

[Parallel Connection Type - Illustration/Line Art \(TIFF 15.2 K\)](#)

[Tap Schematic Connection Type - Illustration/Line Art \(TIFF 15.4 K\)](#)

Please Note:

Adobe® Acrobat® Reader is required to view PDF documents.



Characteristics

Agency Approvals	UL and CSA
Boxes per Case	20
China RoHS - Below MCV	Yes
Color	Yellow
EU RoHS Compliant	Yes
Maximum Recommended Voltage Rating	600 Volt
Units per Box	50
Wire Range Capabilities	12 to 10

3M

Scotchlok™

Self-Stripping Electrical Tap Connectors

562

Part No. **-11040**
054007



1000 Insulated Connectors

UL LISTED as a pressure wire connector.

OPERATING TEMPERATURE: 90° C maximum.

VOLTAGE RATING: 600 Volts maximum, building wire.
1000 Volts maximum in signs, fixtures
or luminaries.
Insulated copper conductors only.

WIRE RANGE: 12 AWG solid or stranded, 10 AWG stranded
(4,0 mm² solid or stranded).
Maximum wire insulation O.D.:
0.190 in. (4,82 mm).

Recommended for common thermoplastic-insulated wire such as vinyl.

IMPORTANT NOTICE: Before using this product, you must evaluate it and determine if it is suitable for your intended application. You assume all risks and liability associated with such use.

Warranty; Limited Remedy; Limited Liability.

This product will be free from defects in material and manufacture at the time of purchase. **3M MAKES NO OTHER WARRANTIES INCLUDING, BUT NOT LIMITED TO, ANY IMPLIED WARRANTY OF MERCHANTABILITY OR FITNESS FOR A PARTICULAR PURPOSE.** If this product is defective within the warranty period stated above, your exclusive remedy shall be, at 3M's option, to replace or repair the 3M product or refund the purchase price of the 3M product. **Except where prohibited by law, 3M will not be liable for any indirect, special, incidental or consequential loss or damage arising from this 3M product, regardless of the legal theory asserted.**

3M and Scotchlok are trademarks of 3M Company. Used under license in Canada.

3M Electrical Markets Division

Austin, TX 78726-9000
Made in U.S.A.

78-8126-6729-9

3M Scotchlok™ Self-Stripping Electrical Tap Connectors 562

Part No. **-11040**
054007

1000 Insulated Connectors

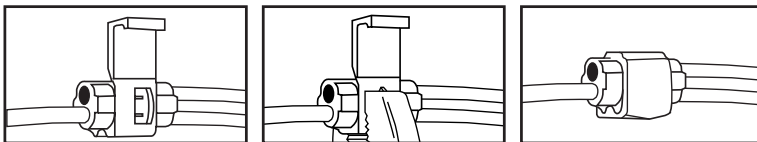
WARNING

Turn power off before installing or removing terminal or connector.
All work should be done according to appropriate electrical codes.

Installation Instructions

Use only with insulated copper wire. Do not strip insulation. Recommended Tool: 9" lineman's pliers.

Tap Connections



Double Run Connections

