

Item # 1-4635 Right-hand, top-coming, standard reset knob



Right-hand, top-coming, standard reset knob

These 5 figure stroke counters are especially designed for limited space and high count life applications. The advanced drive system translates into exceptionally high operating speeds, extended operating life, for fast and accurate readings. Ideal for copiers, printing presses, cut-off machines, and piece-part counting applications. Also available with a thumb lever for use as a tally counter.

Specifications

Model No.	46
Display	5 Figures, white on black, 0.19 inch (5mm) high
Display Height	0.19 Inch
Display Height	5 mm
No. of Digits	5
Reset Type	Standard knob
Speed	500 counts/minute
Operating Temperature	-15 to +140 °F
Operating Temperature	-25 to +60 °C
Mounting Hole Dia.	0.13 x 0.24 Inch
Mounting Hole Dia.	3.3 x 6.1 mm
Weight	2 oz
Weight	57 gm
Stock Availability	Yes
Operating Life	Beyond 5 million counts
Rotation	Top-coming
Shaft Extension	Right-hand
Shaft Diameter	0.156 Inch

Shaft Diameter	4.0 mm
Minimum Count Stroke	40 °
Maximum Count Stroke	45 °



With Lever & Spring



With Thumb Lever

Description

These 5 figure stroke counters are especially designed for limited space and high count life applications. The advanced drive system translates into exceptionally high operating speeds, extended operating life, for fast and accurate readings. Ideal for copiers, printing presses, cut-off machines, and piece-part counting applications. Also available with a thumb lever for use as a tally counter.

Features

- Compact size
- Reliability
- Low cost

Options

- Special levers
- 10011-001S - additional spring
- 10007-009S - lever and spring

Specifications

Figures: 5 figures, white on black, 0.19" [5mm] high
Reset: Standard or large knob, non-reset
Speed: 500 counts/minute
Rotation: Top-coming or top-going
Count Stroke: 40° Min. - 45° Max.

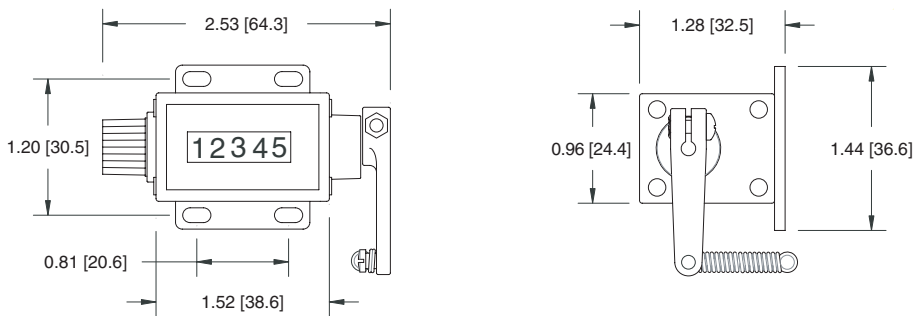
Shaft Extension: Right-hand or left-hand
Shaft Diameter: 0.156" [4.0mm]
Operating Life: Beyond 5 million counts
Temp. Range: -15°F to +140°F [-25°C to +60°C]
Weight: 2 oz. [57g]

Models	Description	Models	Description
1-4615	Left-hand, top-coming, standard reset knob	2-4615	Left-hand, top-coming, large reset knob
1-4625	Left-hand, top-going, standard reset knob	2-4625	Left-hand, top-going, large reset knob
1-4635	Right-hand, top-coming, standard reset knob	2-4635	Right-hand, top-coming, large reset knob
1-4645	Right-hand, top-going, standard reset knob	2-4645	Right-hand, top-going, large reset knob
1-4635T	Right-hand, top-coming, std. reset knob, with thumb lever	5-4645	Right-hand, top-going, non-reset

* Items in bold are normally in factory stock.

Dimensions

Right - Hand Shaft



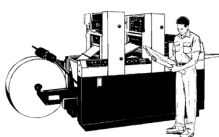
Mounting holes: 0.13" x 0.24" [3.3 x 6.1mm] slots

Applications

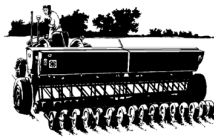
Copiers



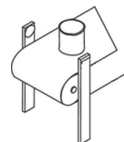
Printing presses



Farm equipment



Piece-part counting



Cut-off machines

