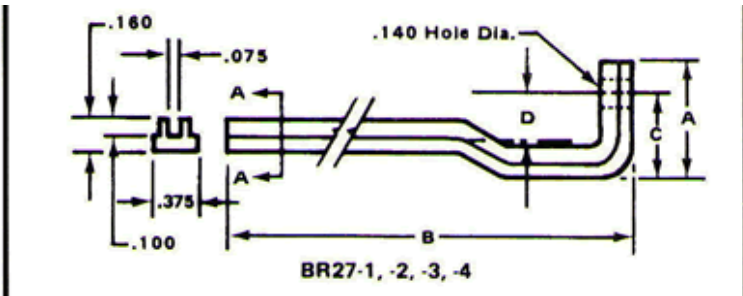
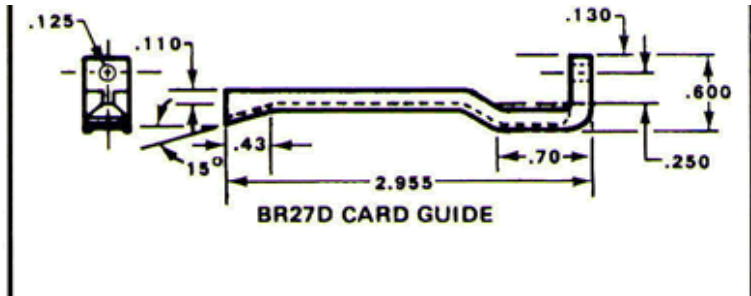


Vector Part No.: " BR27D "

Free standing connector mounted card guide

Part No.	Use with Connector	A	B	C	D	Application
BR27D	R644	0.60"	2.96"	0.47"	0.25"	4.5" Wide Plugboards with Centered Contacts Vector Plugbord Series 3677, 3682 and 3662
BR27-1	R644, R644-1, R644-3	0.49"	3.08"	0.35"	0.13"	4.25" wide Plugboards with centered contacts
BR27-3	R630	0.49"	3.01"	0.36"	0.10"	2.73" Wide Plugboards with Centered Contacts Vector Plugbord Series 3796 and 3797
BR27-5	R656-1	0.55"	3.00"	0.42"	0.22"	4.48" Wide Plugboards with Centered Contacts Vector Plugbord Series 4610-1

Dimensions and Drawing Examples



- Description
- Secure connection
- Rugged support of 0.062" thick
- Free standing circuit boards
- For application in which space is premium
- Several size and styles available
- Aluminium alloy construction
- Mounting hardware included { HD55 Hardware Kit }
- TS169 " T-Strut " mounting rail available

BR27D

Typical Mounting with

Vector 3662-9 Plugbord, R644 Connector & TS169 T-Strut

