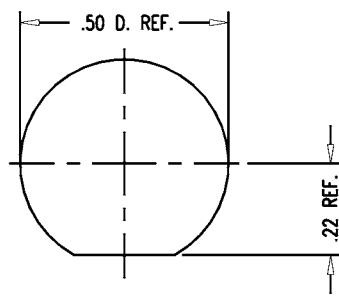
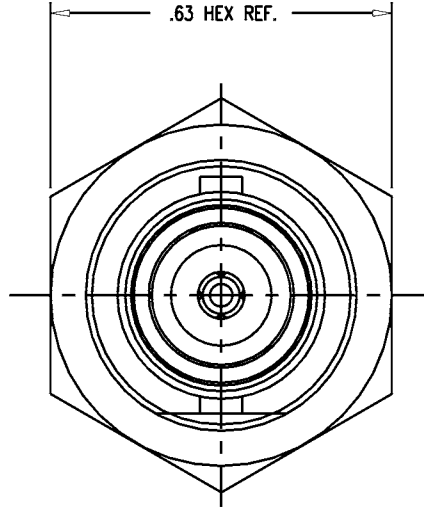
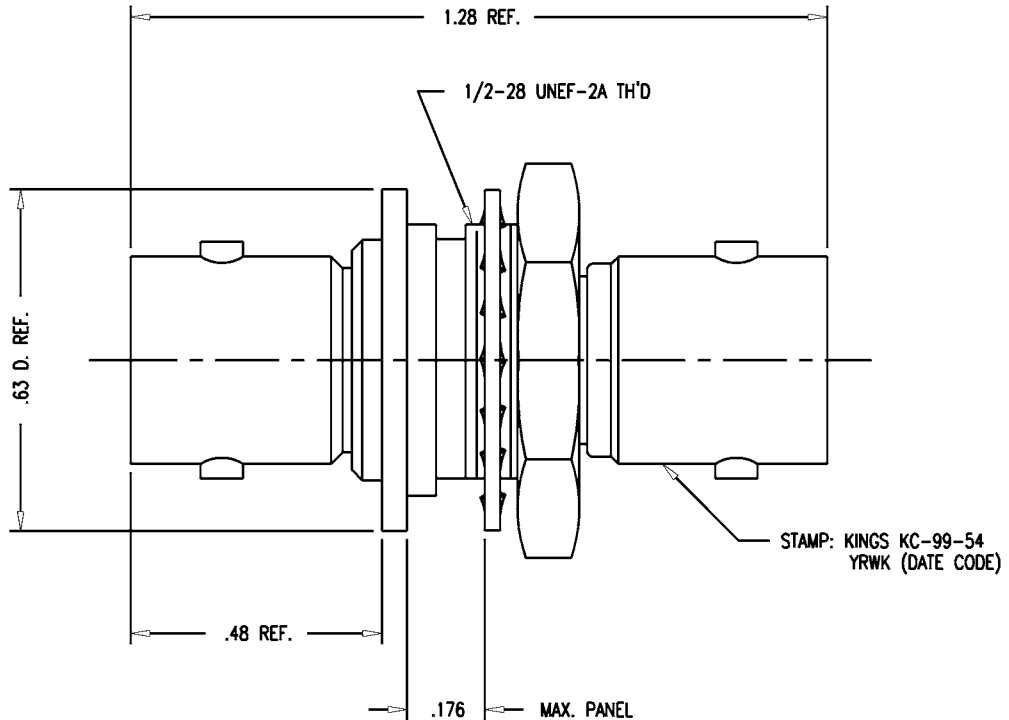


DASH NO.	M CODE	MADE FROM
----------	--------	-----------

GSD

KC-99-54

REVISIONS	
ISSUE	CHANGES
9	CN 36716 C REDRAWN KH 12/06/95
10	CN 37888 B GEH 09/02/99
11	CN 38558 E TML 05/21/02



MOUNTING HOLE

- NOTES:
- INTERFACES PER MIL-STD-348, FIG. 301-2.
 - MATERIALS:
INSULATORS-TEFLON, ASTM-D-4894
CENTER CONTACT-BER. COP., ASTM-B-196
ALL OTHER METAL PARTS-BRASS, ASTM-B16
 - FINISHES:
CENTER CONTACT: SILVER PLATE PER QQ-S-365
ALL OTHER METAL PARTS-KINGS TARNISH RESISTANT NICKEL FINISH (TR-5)
 - ELECTRICAL CHARACTERISTICS:
NOMINAL IMPEDANCE-50 OHMS
WORKING VOLTAGE-500 VRMS
FREQUENCY RANGE-DC TO 4 GHz

SCALE 4:1			
APPROX SURFACE AREA			
USED ON			
REF:			
ADAPTER, F-F, BULKHEAD ISOLATED GROUND, BNC-BNC			
DRAWN	VLS	DATE	11/16/95
DESIGN	VLS	DATE	11/16/95
APPR.	VLS	DATE	11/16/95

- UNLESS OTHERWISE SPECIFIED
- TOLERANCES: FRACTIONS & 2 PLACE DECIMALS ± .010
3 PLACE DECIMALS ± .004 ANGLES ± 1°
CONCENTRICITY OF ANY 2 DIAMETERS MAY NOT EXCEED HALF THE SUM OF THEIR TOLERANCES.
 - REMOVE ALL BURRS, BREAK SHARP EDGES .005 MAX.
 - NO FILLETS PERMITTED.
 - SURFACE ROUGHNESS 63 MICRONS RMS MAX.
 - ALL DIMENSIONS PRIOR TO PLATING.
 - ALL PLATING IN ACCORDANCE WITH KER 10004.
 - ALL LEAD THREADS TO BE CHAMFERED 45° TO ROOT DIAMETER.
★ CRITICAL DIMENSIONS

GSD

KINGS
ELECTRONICS CO., INC.
ROCK HILL, SOUTH CAROLINA 29730

KC-99-54