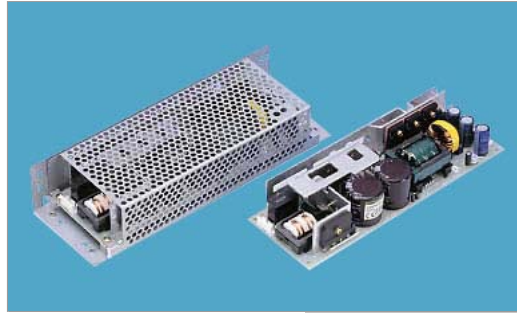


[Home](#) > Product Details

LDA150W



Features

- Input range LDA10 - 75F (AC85 - 264V)
- Input range LDA100 - 300W (AC85 - 132V/AC170 - 264V)
- Rugged PCB type
- Built-in Inrush Current Protection
- RoHS Compliant

Safety Agency Approvals

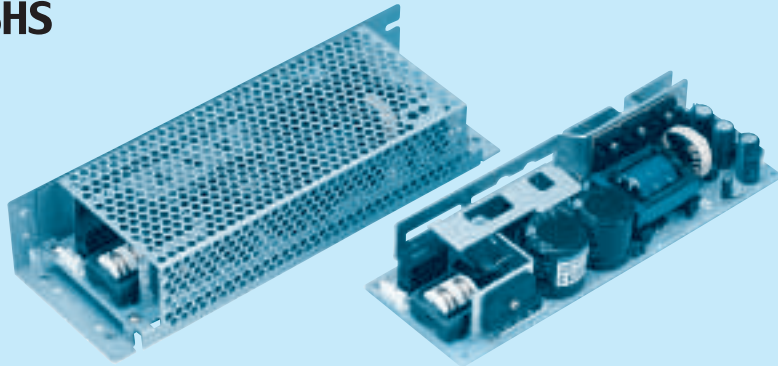
- Complies with DEN-AN
- UL1950, C-UL recognized, TUV approved
- UL recognized, TUV approved, CSA certified (LDA10F - LDA150W)

EMI Compliance

- FCC-B
- CISPR22-B
- EN55022-B
- VCCI-B

2 year warranty(refer to Instruction Manual)

Model	Input Voltage [V]	Output Wattage [W]	DC Output [V/A]
LDA150W-3	AC 85 - 264	90	3V 30A
LDA150W-5	AC 85 - 264	150	5V 30A
LDA150W-9	AC 85 - 264	153	9V 17A
LDA150W-12	AC 85 - 264	150	12V 12.5A
LDA150W-15	AC 85 - 264	150	15V 10A
LDA150W-18	AC 85 - 264	153	18V 8.5A
LDA150W-24	AC 85 - 264	151.2	24V 6.3A
LDA150W-24-H	AC 85 - 264	151.2 (peak 240)	24V 6.3A (peak 10A)
LDA150W-30	AC 85 - 264	150	30V 5A
LDA150W-48	AC 85 - 264	144	48V 3A



Recommended Noise Filter
NAC-06-472



High voltage pulse noise type : NAP series
Low leakage current type : NAM series
* The Noise Filter is recommended to connect with several devices.

- ① Series name
- ② Output wattage
- ③ Autoranging input
- ④ Output voltage
- ⑤ Optional
- C : with Coating
- G : Low leakage current
- L : with LED
- R : with Remote ON/OFF
- S : with Chassis
- SN : with Chassis & cover
- Y : with Potentiometer

MODEL	LDA150W-3	LDA150W-5	LDA150W-9	LDA150W-12	LDA150W-15	LDA150W-18	LDA150W-24	LDA150W-24-H	LDA150W-30	LDA150W-48
MAX OUTPUT WATTAGE[W]	90	150	153	150	150	153	151.2	151.2	150	144
DC OUTPUT	*3 3V 30A	5V 30A	9V 17A	12V 12.5A	15V 10A	18V 8.5A	24V 6.3A	24V 6.3(10)A	30V 5A	48V 3A

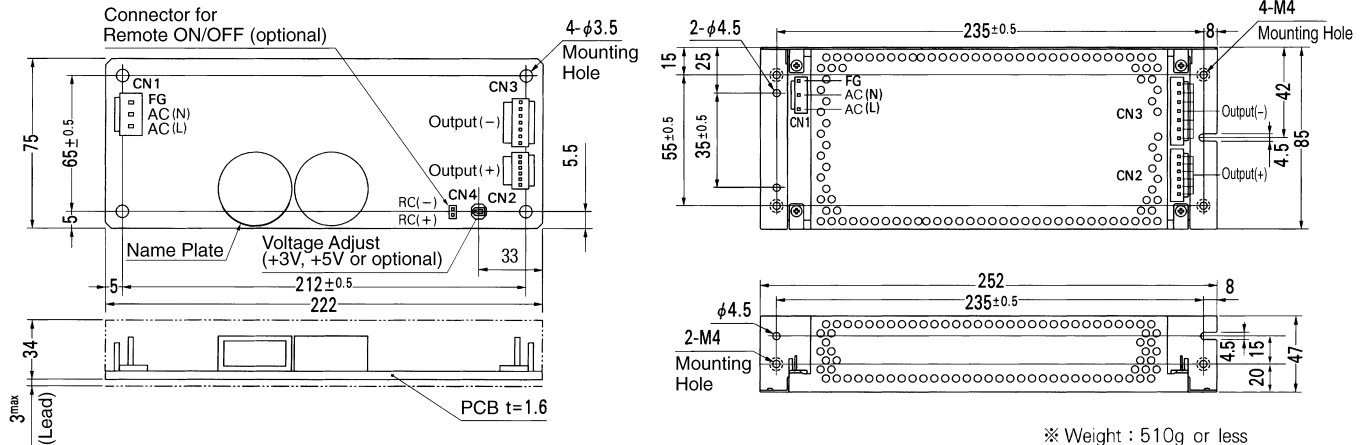
SPECIFICATIONS

MODEL	LDA150W-3	LDA150W-5	LDA150W-9	LDA150W-12	LDA150W-15	LDA150W-18	LDA150W-24	LDA150W-24-H	LDA150W-30	LDA150W-48														
INPUT	VOLTAGE[V]											AC 85 - 132 / 170 - 264 1 φ												
	CURRENT[A]		ACIN 100V											3.6typ (Io=100%)										
			ACIN 200V											2.0typ (Io=100%)										
	FREQUENCY[Hz]											47 - 440												
	EFFICIENCY[%]											75typ	79typ	79typ	82typ	83typ	84typ	85typ	85typ	85typ	82typ			
	INRUSH CURRENT[A]		ACIN 200V											30typ (Io=100%) (At cold start)										
LEAKAGE CURRENT[mA]											0.75max (60Hz, According to UL, CSA, VDE and DEN-AN)													
OUTPUT	VOLTAGE[V]											3	5	9	12	15	18	24	24	30	48			
	CURRENT[A]											*1 30	30	17	12.5	10	8.5	6.3	6.3(10)	5	3			
	LINE REGULATION[mV]											20max	20max	36max	48max	60max	72max	96max	96max	120max	192max			
	LOAD REGULATION[mV]											40max	40max	100max	100max	120max	120max	150max	150max	180max	240max			
	RIPPLE[mVp-p]		0 to +50°C											80max	80max	120max	120max	120max	120max	120max	120max	150max	150max	
			-10 - 0°C											140max	140max	160max	160max	160max	160max	160max	260max	160max	200max	
	RIPPLE NOISE[mVp-p]		0 to +50°C											120max	120max	150max	150max	150max	150max	150max	250max	150max	400max	
			-10 - 0°C											160max	160max	180max	180max	180max	180max	180max	280max	180max	600max	
	TEMPERATURE REGULATION[mV]											60max	60max	120max	150max	180max	200max	290max	290max	360max	560max			
	DRIFT[mV]											*2 20max	20max	36max	48max	60max	72max	96max	96max	120max	192max			
	START-UP TIME[ms]											200max (ACIN 100V, Io=100%)												
HOLD-UP TIME[ms]											10typ (ACIN 85V, Io=100%) 20typ (ACIN 100V, Io=100%)													
OUTPUT VOLTAGE ADJUSTMENT RANGE[V]		2.85 - 3.6		4.5 - 5.5		Fixed ("Y" which can be adjusted the output is available as option : 9, 12, 15, 18, 24, 30, 48V ±10%)																		
OUTPUT VOLTAGE SETTING[V]		—		—		8.6 - 9.4		11.5 - 12.5		14.4 - 15.6		17.3 - 18.7		23.0 - 25.0		23.0 - 25.0		28.5 - 31.5		46.0 - 50.0				
PROTECTION CIRCUIT AND OTHERS	OVERCURRENT PROTECTION											Works over 105% of rating (-H : peak) and recovers automatically												
	OVERVOLTAGE PROTECTION											4.00 - 5.25V Works at 115 - 140% of rating												
	OPERATING INDICATION											Not provided												
	REMOTE SENSING											Not provided												
REMOTE ON/OFF											Option (Refer to Instruction Manual)													
ISOLATION	INPUT-OUTPUT											AC3,000V 1minute, Cutoff current = 10mA, DC500V 50MΩ min (At Room Temperature)												
	INPUT-FG											AC2,000V 1minute, Cutoff current = 10mA, DC500V 50MΩ min (At Room Temperature)												
	OUTPUT-FG											AC500V 1minute, Cutoff current = 100mA, DC500V 50MΩ min (At Room Temperature)												
ENVIRONMENT	OPERATING TEMP., HUMID. AND ALTITUDE											-10 to +60°C, 20 - 90%RH (Non condensing) (Refer to DERATING CURVE) 3,000m (10,000feet) max												
	STORAGE TEMP., HUMID. AND ALTITUDE											-20 to +75°C, 20 - 90%RH (Non condensing) 9,000m (30,000feet) max												
	VIBRATION											10 - 55Hz, 19.6m/s ² (2G), 3minutes period, 60minutes each along X, Y and Z axis												
	IMPACT											196.1m/s ² (20G), 11ms, once each X, Y and Z axis												
SAFETY AND NOISE REGULATIONS	AGENCY APPROVALS											UL60950-1, EN60950-1, EN50178, CSA C22.2 No.234 Complies with DEN-AN and IEC60950-1												
	CONDUCTED NOISE											Complies with FCC-B, CISPR22-B, EN55022-B, VCCI-B												
OTHERS	CASE SIZE/WEIGHT											75 x 37 x 222mm (W x H x D) / 510g max (without chassis and cover)												
	COOLING METHOD											Convection												

*1 Peak load for 10sec. or less is acceptable if the total wattage is less than the rated wattage(24V:151.2W).
 *2 Drift is the change in DC output for an eight hour period after a half-hour warm-up at 25°C, with the input voltage held constant at the rated input/output.
 *3 () : peak current
 * Avoid prolonged use under over-load.

* Parallel operation with other model is not possible.
 * Derating is required when operated with chassis and cover.

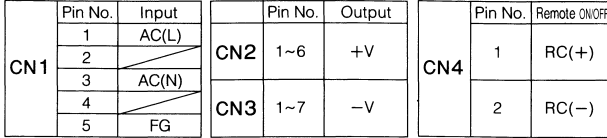
External view



I/O Connector	Mating Connector	Terminal
CN1	B3P5-VH	VHR-5N Chain:SVH-21T-P1.1 Loose:BVH-21T-P1.1
CN2	B6P-VH	VHR-6N Chain:SVH-21T-P1.1 Loose:BVH-21T-P1.1
CN3	B7P-VH	VHR-7N Chain:SVH-21T-P1.1 Loose:BVH-21T-P1.1
CN4	B2B-XH-A	XHP-2 Chain: SXH-001T-P0.6 Loose: BXH-001T-P0.6

(Mfr : J.S.T.)

<PIN CONNECTION>



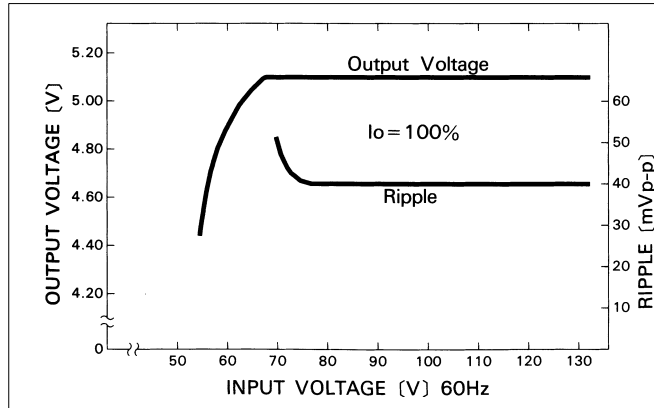
※Keep drawing current per pin below 5A for CN2, CN3.

- ※ Weight : 510g or less (Without chassis and cover)
- ※ Tolerance : ± 1
- ※ Dimensions in mm.
- ※ PCB Material : Glass composite (CEM3)
- ※ Chassis and cover is optional.
- ※ Chassis and cover is not available to remote ON/OFF unit.
- ※ Mounting torque : 1.5 N·m (16 kgf·cm) max

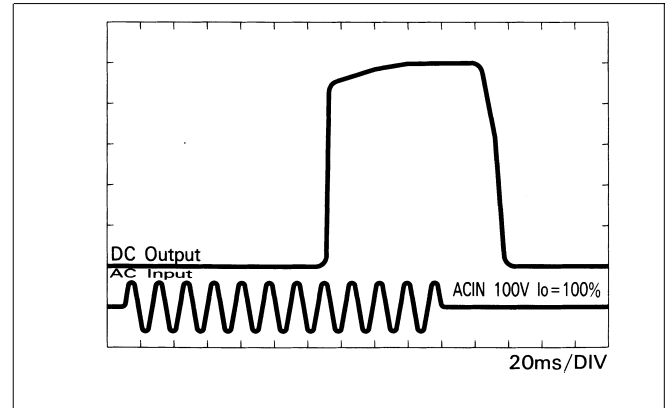
LDA

Performance data

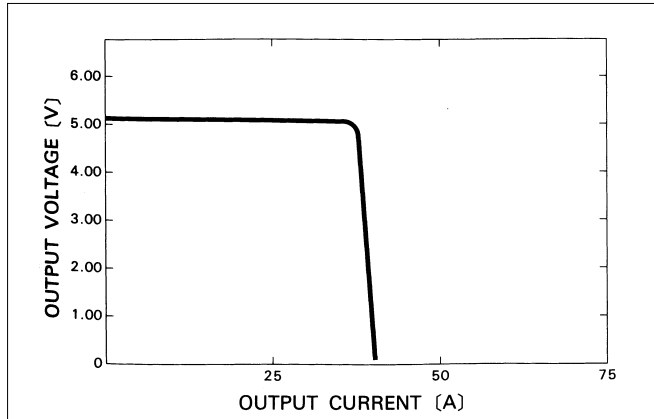
■STATIC CHARACTERISTICS (LDA150W-5)



■RISE TIME & FALL TIME (LDA150W-5)



■OVERCURRENT CHARACTERISTICS (LDA150W-5)



■DERATING CURVE

