

Item # 2-1006 115VAC, base mount, knob reset



115VAC, base mount, knob reset

A 6 figure general purpose, rugged, electromechanical counter, either panel or base mounted, with manual knob reset, key reset, or non-reset. Frame and housing provides rigid support for accurate alignment and trouble-free use. Distinctive numerals enhance visibility under adverse viewing conditions.

Specifications

Model No.	10
Mounting	Base Mount
Display	6 Figures, white on black, 0.19 inch (5mm) high
Display Height	0.19 Inch
Display Height	5 mm
No. of Digits	6
Voltage	115 VAC
Tolerance- Voltage	± 10%, but not to exceed 10 volts
Power	7.8 watts (nominal)
Reset Type	Knob
Speed	1000 counts/minute (min. 30ms - on, 30ms - off)
Operating Temperature	-15 to +140 °F
Operating Temperature	-26 to +60 °C
Approvals	UL Recognized, CSA Certified, CE Compliant
Termination	(2) No. 22 AWG 105° C wire leads, 8 inch (203mm) long
Mounting Hole Dia.	0.15 Inch
Mounting Hole Dia.	3.8 mm
Weight	18 to 22 oz
Weight	510 to 624 gm
Operating Life	Beyond 50 million counts
Stock Availability	Yes



Description

A 6 figure general purpose, rugged, electromechanical counter, either panel or base mounted, with manual knob reset, key reset, or non-reset. Frame and housing provides rigid support for accurate alignment and trouble-free use. Distinctive numerals enhance visibility under adverse viewing conditions.

Features

- Panel or base mount
- Rigid support for accurate alignment
- Enhanced visibility
- Manual knob, key or non-reset

Options

- Voltages
- Lead lengths
- Terminations
- Mounting
- 1071-024S - additional key for model 1026

Specifications

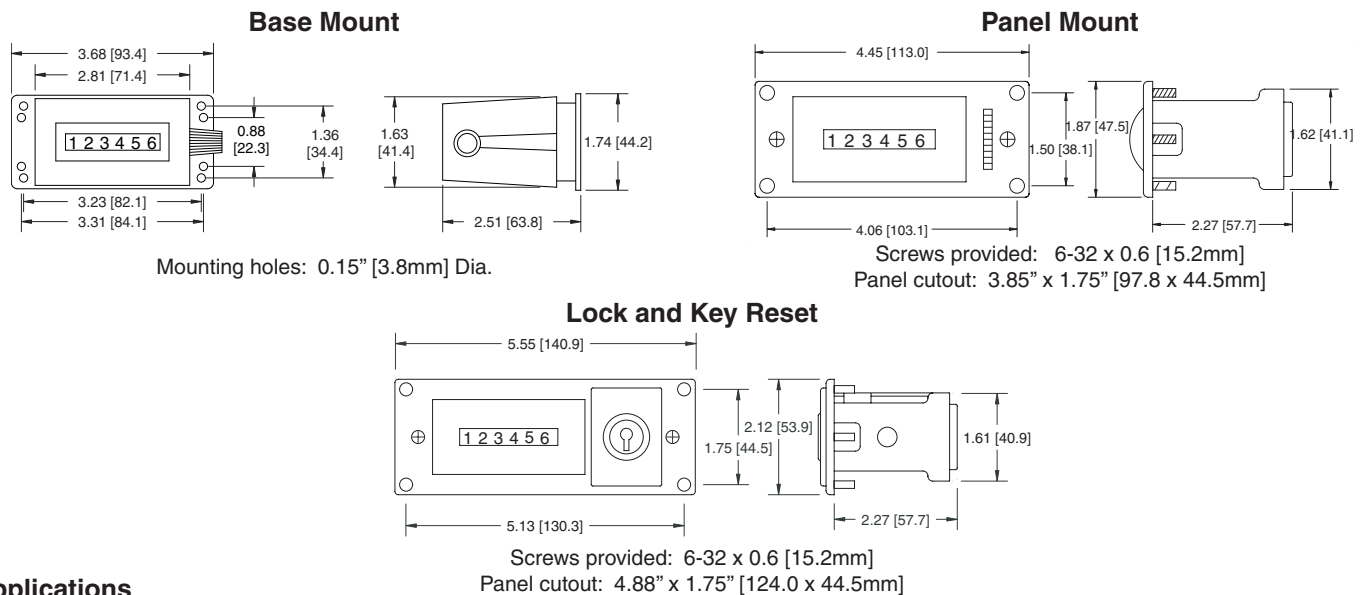
Figures: 6 figures, white on black, 0.19" [5mm] high
Reset: Knob, lock and key, or non-reset
Speed: 1,000 counts/minute (min. 30ms - on, 30ms - off)
Voltage: 24, 115, 230 VAC or 24 VDC (+/- 10%, but not to exceed 10 volts)
Power: 7.8 watts (nominal)

Mounting: Base or panel
Terminations: (2)#22 AWG 105°C wire leads, 8" [203mm] long
Operating Life: Beyond 50 million counts
Temp. Range: -15°F to +140°F [-26°C to +60°C]
Approvals: UL Recognized, CSA Certified, CE Compliant
Weight: 18 to 22 oz. [510 to 624g]

Models	Description	Models	Description
1-1006	230VAC, base mount, knob reset	P3-1006	24VAC, panel mount, knob reset
2-1006	115VAC, base mount, knob reset	P8-1006	24VDC, panel mount, knob reset
3-1006	24VAC, base mount, knob reset	P2-1016	115VAC, panel mount, non-reset
8-1006	24VDC, base mount, knob reset	P31-1026	230VAC, panel mount, lock and key reset
2-1016	115VAC, base mount, non-reset	P32-1026	115VAC, panel mount, lock and key reset
P1-1006	230VAC, panel mount, knob reset	P33-1026	24VAC, panel mount, lock and key reset
P2-1006	115VAC, panel mount, knob reset	P38-1026	24VDC, panel mount, lock and key reset

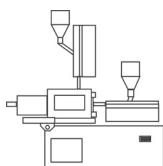
* Items in bold are normally in factory stock.

Dimensions

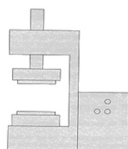


Applications

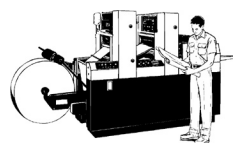
Molding machines



Punch press



Printing presses



Test labs



Secondary Machines





Description

A 7 figure, rugged, electromechanical counter, either panel or base mounted, with manual knob reset, key reset, or non-reset. Frame and housing provides rigid support for accurate alignment and trouble-free use. Large, easy-to-read numerals assure readability.

Features

- 7 figure
- Panel or base mount
- Rigid support for accurate alignment
- Large easy to read numerals

Options

- Voltages
- Lead lengths
- Terminations
- Wheel color

Specifications

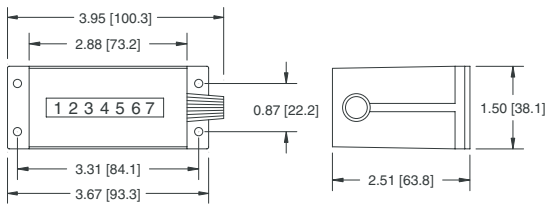
Figures: 7 figures, white on black, 0.19" [5mm] high
Reset: Knob, lock and key, or non-reset
Speed: 1,000 counts/minute
 (min. 30ms - on, 30ms - off)
Voltage: 24, 115, 230 VAC or 24 VDC
 (+/- 10%, but not to exceed 10 volts)
Power: 7.8 watts (nominal)

Mounting: Base, panel, or behind the panel
Terminations: (2)#22 AWG 105°C wire leads, 8" [203mm] long
Operating Life: Beyond 50 million counts
Temp. Range: -15°F to +140°F [-26°C to +60°C]
Approvals: UL Recognized, CSA Certified, CE Compliant
Weight: 14 to 18 oz. [397 to 510g]

Models	Description	Models	Description
1-1007	230VAC, base mount, knob reset	P2-1007	115VAC, panel mount, knob reset
2-1007	115VAC, base mount, knob reset	P2-1027	115VAC, panel mount, lock and key reset
3-1007	24VAC, base mount, knob reset	P8-1027	24VDC, panel mount, lock and key reset
8-1007	24VDC, base mount, knob reset	R2-1007	115VAC, behind the panel, knob reset
2-1017	115VAC, base mount, non-reset	R2-1017	115VAC, behind the panel, non-reset

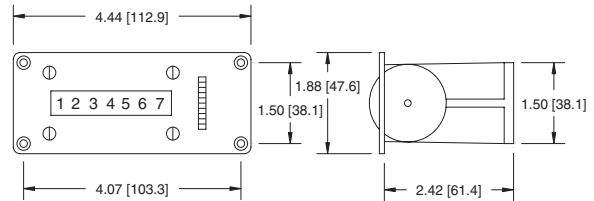
Dimensions

Base Mount



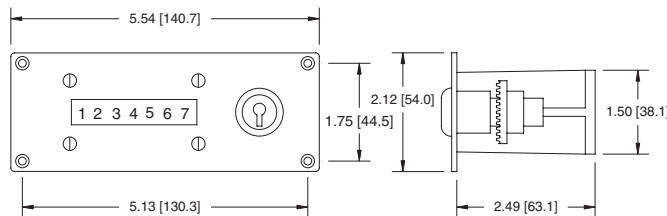
Mounting holes: 0.15" [3.8mm] Dia.

Panel Mount



Screws provided: 6-32 x 0.6 [15.2mm]
Panel cutout: 3.85" x 1.75" [97.8 x 44.5mm]

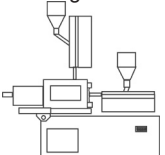
Lock and Key Reset



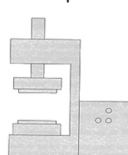
Screws provided: 6-32 x 0.6 [15.2mm]
Panel cutout: 4.88" x 1.75" [124.0 x 44.5mm]

Applications

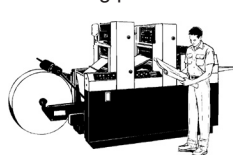
Molding machines



Punch press



Printing presses



Test labs



Secondary Machines

