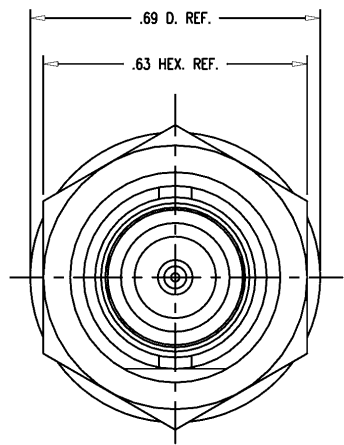
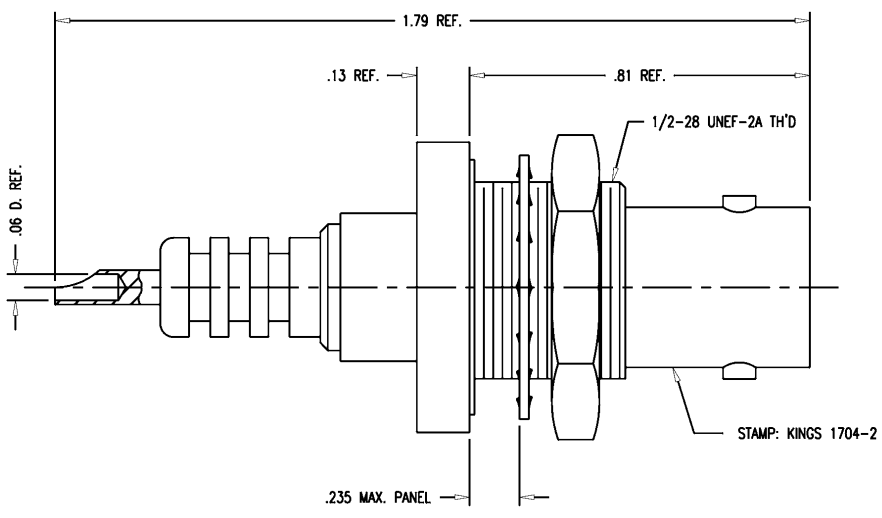
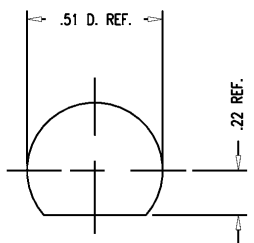


SD

1704-2



- NOTES:
1. INTERFACE PER MIL-STD-348, FIG. 314-1.
 2. MATERIALS:
 INSULATOR: TEFLON, ASTM-D-1457
 LOCKWASHER: PHOSPHOR BRONZE, QQ-B-750
 GASKET: SILICONE RUBBER, ZZ-R-765
 ALL OTHER METAL PARTS: BRASS, ASTM-B16
 3. FINISHES:
 CENTER CONTACT: GOLD PLATE PER MIL-G-45204
 ALL OTHER METAL PARTS: KINGS TARNISH RESISTANT FINISH (TR-5)
 4. ELECTRICAL CHARACTERISTICS:
 NOMINAL IMPEDANCE: NON-CONSTANT
 VOLTAGE RATING: 3500 VRMS
 5000 VDC



MOUNTING HOLE

SD

REVISIONS	
ISSUE	CHANGES
4	CN 34186 C REDRAWN KH 11/06/92
5	CN 34316 C JCA 11/23/92
6	CN 37593 C MRM 03/11/98

SCALE 4:1	
APPROX SURFACE AREA	
USED ON	
REF:	
RECEPTACLE, BULKHEAD, SHV, M	
DRAWN KH	DATE 11/09/92
DESIGN LI	DATE 11/10/92
APPR.	DATE

1704-2C

KINGS
ELECTRONICS CO., INC.
TUCKAHOE, NEW YORK 10707

1704-2