

STAMPED AND FORMED CONTACTS, PG 1 of 2

Click on [blue underlined](#) part numbers to be taken to their spec sheets.

OPTIONS

PART NUMBER: [AT62-14-01XX](#)
DESCRIPTION: CONTACT, SOCKET, STAMPED, SIZE 16

MATERIAL:
 CONTACT BODY: COPPER ALLOY
 HOOD: STAINLESS STEEL
PLATING SUFFIX CODE:
 XX=22 NICKEL PLATING
 XX=44 GOLD PLATING
CONTACT GENERAL DATA SPECIFICATION: S2-15217
AVAILABLE CRIMPERS: ATT-16-00, MFX-3950 & MFX-3953
CRIMPER SPECIFICATIONS: S2-15223 & S2-15224
CRIMP INFORMATION DRAWING: S2-15221 & S2-15222
CONTACTS PER REEL: APPROX. 4000 (PARTIAL REELS AVAILABLE)



PART NUMBER: [AT62-16-01XX](#)
DESCRIPTION: CONTACT, SOCKET, STAMPED, SIZE 16

MATERIAL:
 CONTACT BODY: COPPER ALLOY
 HOOD: STAINLESS STEEL
PLATING SUFFIX CODE:
 XX=22 NICKEL PLATING
 XX=44 GOLD PLATING
CONTACT GENERAL DATA SPECIFICATION: S2-15217
AVAILABLE CRIMPERS: ATT-16-00, ATT-16-01, MFX-3950 & MFX-3953
CRIMPER SPECIFICATIONS: S2-15223 & S2-15224
CRIMP INFORMATION DRAWING: S2-15221 & S2-15222
CONTACTS PER REEL: APPROX. 4000 (PARTIAL REELS AVAILABLE)



PART NUMBER: [AT62-16-06XX](#)
DESCRIPTION: CONTACT, SOCKET, STAMPED, SIZE 16

MATERIAL:
 CONTACT BODY: COPPER ALLOY
 HOOD: STAINLESS STEEL
PLATING SUFFIX CODE:
 XX=22 NICKEL PLATING
 XX=44 GOLD PLATING
CONTACT GENERAL DATA SPECIFICATION: S2-15217
AVAILABLE CRIMPERS: ATT-16-01, MFX-3950 & MFX-3953
CRIMPER SPECIFICATIONS: S2-15223 & S2-15224
CRIMP INFORMATION DRAWING: S2-15221 & S2-15222
CONTACTS PER REEL: APPROX. 4000 (PARTIAL REELS AVAILABLE)



PART NUMBER: [AT60-14-01XX](#)
DESCRIPTION: CONTACT, PIN, STAMPED, SIZE 16

MATERIAL: COPPER ALLOY
PLATING SUFFIX CODE:
 XX=22 NICKEL PLATING
 XX=44 GOLD PLATING
CONTACT GENERAL DATA SPECIFICATION: S2-15217
AVAILABLE CRIMPERS: ATT-16-00, MFX-3950 & MFX-3953
CRIMPER SPECIFICATIONS: S2-15223 & S2-15224
CRIMP INFORMATION DRAWING: S2-15221 & S2-15222
CONTACTS PER REEL: APPROX. 4000 (PARTIAL REELS AVAILABLE)

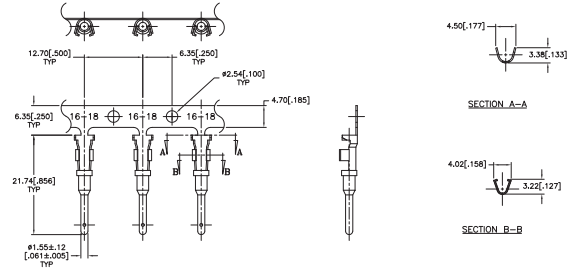


STAMPED AND FORMED CONTACTS, PG 2 of 2

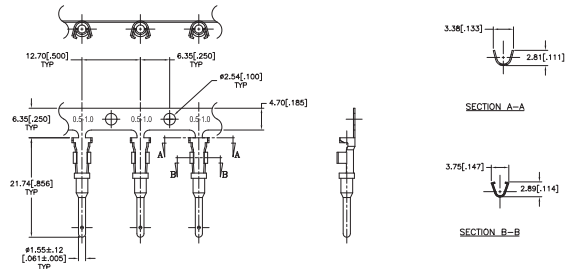
Click on [blue underlined part numbers](#) to be taken to their spec sheets.

OPTIONS

PART NUMBER: [AT60-16-01XX](#)
DESCRIPTION: CONTACT, PIN, STAMPED, SIZE 16
MATERIAL: COPPER ALLOY
PLATING SUFFIX CODE:
 XX=22 NICKEL PLATING
 XX=44 GOLD PLATING
CONTACT GENERAL DATA SPECIFICATION: S2-15217
AVAILABLE CRIMPERS: ATT-16-00, ATT-16-01, MFX-3950 & MFX-3953
CRIMPER SPECIFICATIONS: S2-15223 & S2-15224
CRIMP INFORMATION DRAWING: S2-15221 & S2-15222
CONTACTS PER REEL: APPROX. 4000 (PARTIAL REELS AVAILABLE)



PART NUMBER: [AT60-16-06XX](#)
DESCRIPTION: CONTACT, PIN, STAMPED, SIZE 16
MATERIAL: COPPER ALLOY
PLATING SUFFIX CODE:
 XX=22 NICKEL PLATING
 XX=44 GOLD PLATING
CONTACT GENERAL DATA SPECIFICATION: S2-15217
AVAILABLE CRIMPERS: ATT-16-01, MFX-3950 & MFX-3953
CRIMPER SPECIFICATIONS: S2-15223 & S2-15224
CRIMP INFORMATION DRAWING: S2-15221 & S2-15222
CONTACTS PER REEL: APPROX. 4000 (PARTIAL REELS AVAILABLE)



SOLID/MACHINED CONTACTS

Click on [blue underlined part numbers](#) to be taken to their spec sheets.

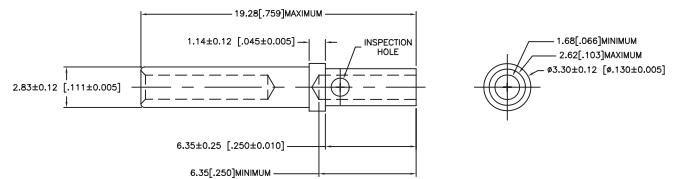
OPTIONS

MILITARY-STYLE

PART NUMBER: [AT60-202-16XX](#)
DESCRIPTION: CONTACT, PIN, SOLID MACHINED, SIZE 16
MATERIAL: COPPER ALLOY
PLATING SUFFIX CODE:
 XX=141 NICKEL PLATING
 XX=31 GOLD PLATING
CONTACT GENERAL DATA SPECIFICATION: S2-15217
AVAILABLE CRIMPERS: CA-5D12 & CA-5E12
CRIMPER SPECIFICATIONS: S2-15219 & S2-15220
CRIMP INFORMATION DRAWING: S2-15218

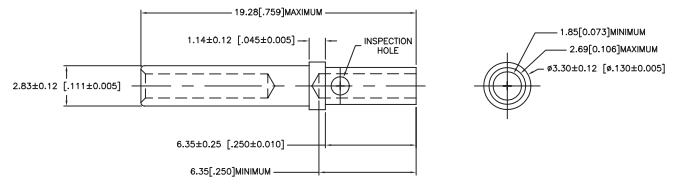


PART NUMBER: [AT62-201-16XX](#)
DESCRIPTION: CONTACT, SOCKET, SOLID MACHINED, SIZE 16
MATERIAL:
 CONTACT BODY: COPPER ALLOY
 HOOD: STAINLESS STEEL
PLATING SUFFIX CODE:
 XX=141 NICKEL PLATING
 XX=31 GOLD PLATING
CONTACT GENERAL DATA SPECIFICATION: S2-15217
AVAILABLE CRIMPERS: CA-5D12 & CA-5E12
CRIMPER SPECIFICATIONS: S2-15219 & S2-15220
CRIMP INFORMATION DRAWING: S2-15218



ROCKSOLID™ CONTACTS

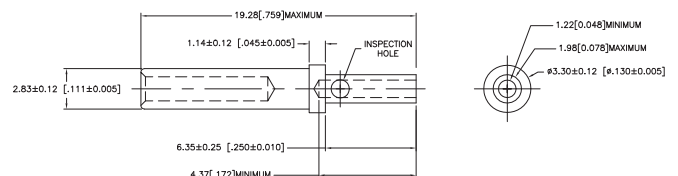
PART NUMBER: [65-54942-14](#)
DESCRIPTION: CONTACT, SOCKET, ROCKSOLID, SIZE 16
AWG RANGE: 14AWG
MATERIAL: COPPER ALLOY
PLATING: GOLD
CONTACT GENERAL DATA SPECIFICATION: S2-15217
AVAILABLE CRIMPERS: CA-5D12 & CA-5E12
CRIMPER SPECIFICATIONS: S2-15219 & S2-15220
CRIMP INFORMATION DRAWING: S2-15218



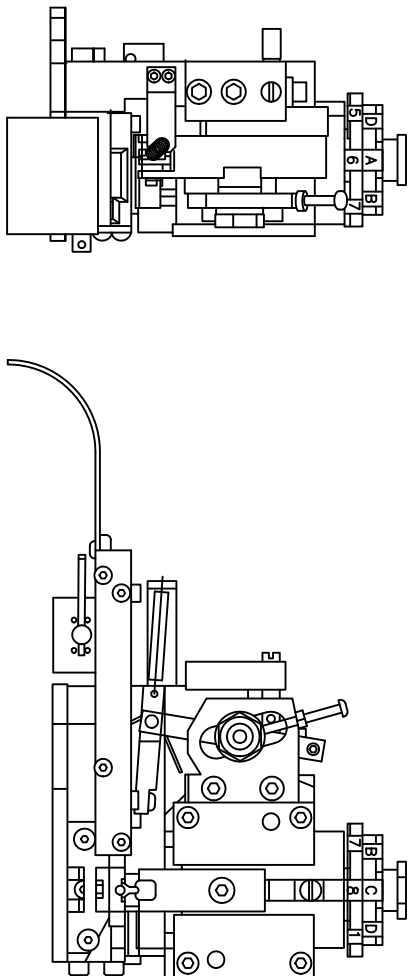
PART NUMBER: [65-54942-16](#)
DESCRIPTION: CONTACT, SOCKET, ROCKSOLID, SIZE 16
AWG RANGE: 16AWG
MATERIAL: COPPER ALLOY
PLATING: GOLD
CONTACT GENERAL DATA SPECIFICATION: S2-15217
AVAILABLE CRIMPERS: CA-5D12 & CA-5E12
CRIMPER SPECIFICATIONS: S2-15219 & S2-15220
CRIMP INFORMATION DRAWING: S2-15218



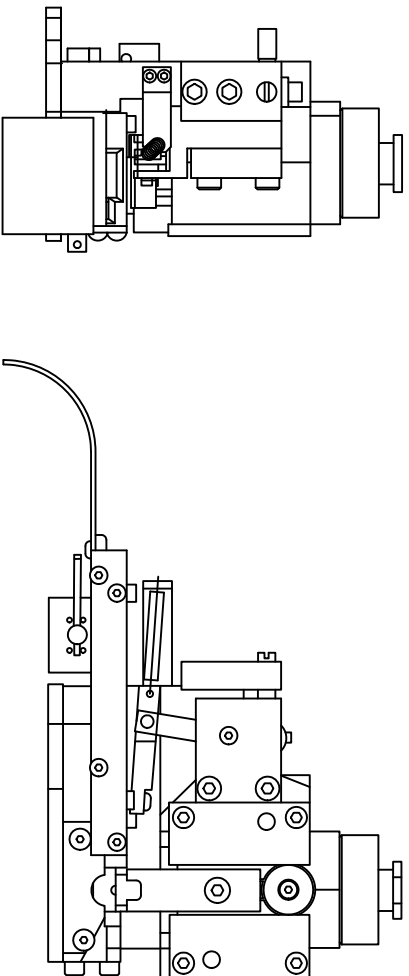
PART NUMBER: [65-54942-20](#)
DESCRIPTION: CONTACT, SOCKET, ROCKSOLID, SIZE 16
AWG RANGE: 20AWG
MATERIAL: COPPER ALLOY
PLATING: GOLD
CONTACT GENERAL DATA SPECIFICATION: S2-15217
AVAILABLE CRIMPERS: CA-5D12 & CA-5E12
CRIMPER SPECIFICATIONS: S2-15219 & S2-15220
CRIMP INFORMATION DRAWING: S2-15218



REV ZONE		ECO		REVISIONS		DATE	BY	APPR
AI	-	-	-	DESCRIPTION	RELEASE NUMBER 016571	6/12/09	B.D.B.	M.R.F.



SINE PART NUMBER	MFX-3950
DEUTSCH PART NUMBER	DCT16-02-00
TYCO PART NUMBER	1-3-1385344-1, 2, 3, 4, 5 & 7



SINE PART NUMBER	MFX-3953
DEUTSCH PART NUMBER	DCT1620-02-00

ALL REFERENCES TO DEUTSCH PRODUCTS OR SPECIFICATIONS ARE FOR COMPARISON PURPOSES ONLY, AND REFER TO DEUTSCH INDUSTRIAL PRODUCTS.
 ALL REFERENCES TO TYCO PRODUCTS OR SPECIFICATIONS ARE FOR COMPARISON PURPOSES ONLY, AND REFER TO TYCO ELECTRONICS.

QUANTITY	PART NUMBER	DESCRIPTION	ITEM
UNLESS OTHERWISE SPECIFIED			
1) All dimensions are in inches.			
2) Pl. DEC 20.00 1 Precision 31/64			
3) Pl. DEC 20.00 1 Angles 3:1			
4) Fabrication Standards Per: SS-20020			
5) Heat: U			
APPROVAL: BERNIM 6/9/09			
CUSTOMER: CRIMPER INFORMATION			
MATERIAL SPECIFICATIONS: M/A			
PROCESS SPECIFICATIONS: THE USE OF THIS DRAWING IS LIMITED TO THE SPECIFICATIONS AND PERFORMANCE INDICATED THEREON. NO DIMENSIONS ARE SUBJECT TO TOLERANCE PERMITTING VARIATIONS FROM THE DIMENSIONS SHOWN, UNLESS OTHERWISE SPECIFIED. ALL DIMENSIONS REFERENCED HEREON MAY CONTAIN UNRECORDED REVISION DATA.			
NEXT ASSY: S2-15224			

SIGNATURES		DATE	
DRAWN: BERNIM	6/9/09	ENGINEER: TONCE	6/9/09
APPROVAL: BERNIM	6/9/09	APPROVAL: BERNIM	6/9/09

SINE Systems Corporation
 A Subsidiary of Amphenol Corporation
 44724 Moley Drive
 Clinton Township, MI 48036

SIZE	ISSUE NO.	SCALE	REVISION
C	10K44	S2-15224	A1

4 3 2 1

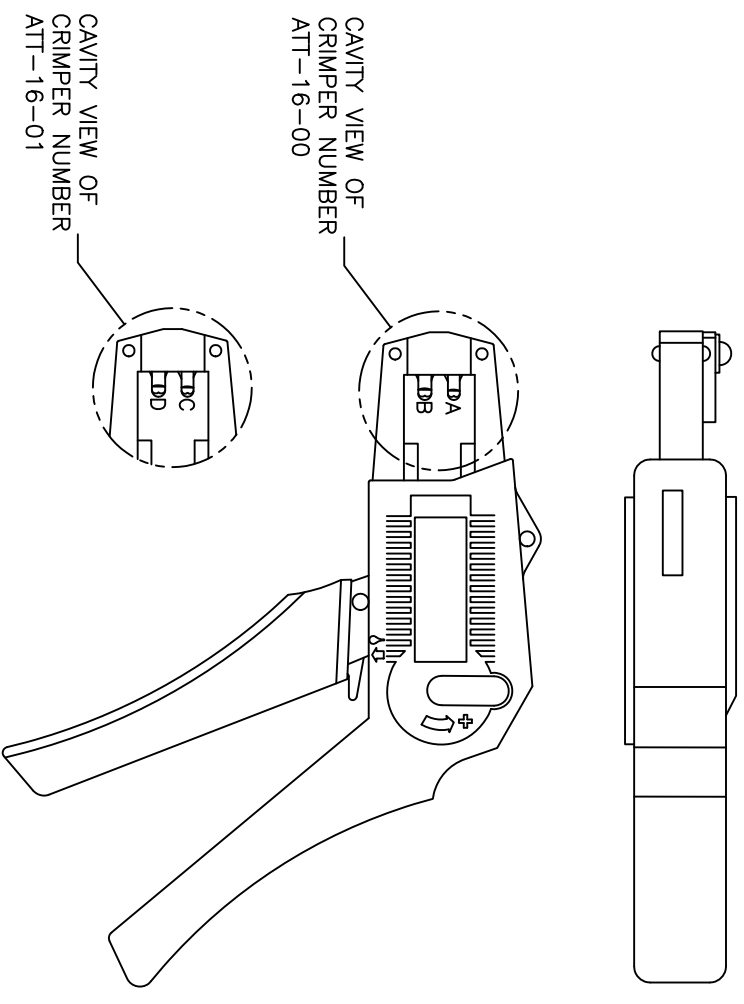
REVISIONS					
REV	ECO	DESCRIPTION	DATE	BY	APPR
A1	-	RELEASE NUMBER 016571	6/12/09	B.D.B.	M.R.F.

USE CRIMPER NUMBER:
ATT-16-00 WITH CAVITY A & B

CONTACT P/N:	INSULATION ϕ	CAVITY	WIRE SIZE
AT60-16-01**	.075 - .140	B	1.5mm ²
AT62-16-01**	[1.91 - 3.56]	A	16AWG
		A	1.0mm ²
AT60-14-01**	.095 - .150	B	14AWG
AT62-14-01**	[2.41 - 3.81]	B	2.0mm ²
		B	1.5mm ²
		A	1.5mm ²
		A	16AWG
		A	1.0mm ²
AT60-16-06**	.055 - .100	A	16AWG
AT62-16-06**	[1.40 - 2.54]	A	1.0mm ²

USE CRIMPER NUMBER:
ATT-16-01 WITH CAVITY C & D

CONTACT P/N:	INSULATION ϕ	CAVITY	WIRE SIZE
AT60-16-01**	.075 - .140	D	18AWG
AT62-16-01**	[1.91 - 3.56]	D	.75mm ²
AT60-16-06**	.055 - .100	D	18AWG
AT62-16-06**	[1.40 - 2.54]	D	.75mm ²
		C	.50mm ²



ALL REFERENCES TO DEUTSCH PRODUCTS OR SPECIFICATIONS ARE FOR COMPARISON PURPOSES ONLY, AND REFER TO DEUTSCH INDUSTRIAL PRODUCTS.

- NOTES (UNLESS OTHERWISE SPECIFIED):
- ALL DIMENSIONS IN INCHES [MILLIMETERS]
 - FOR PLATING CODES ** SEE CONTACT DATA DRAWINGS.
 - THIS TOOL IS FOR CRIMPING SIZE 16 CONTACTS ONLY TO WIRES LISTED IN THE CHARTS.
 - DEUTSCH IPD CROSS REFERENCE PART NUMBERS ARE DTT-16-00 AND DTT-16-01.

QUANTITY	PART NUMBER	DESCRIPTION	ITER#
		MATERIALS LIST	
		SINE Systems Corporation	
		A Subsidiary of Amphenol Corporation	
		44724 Morley Drive	
		Clifton Township, NJ 08036	
		INSTRUCTIONS, ATT-16-00 & 01	
		CRIMPER, HAND, STAMPED CONTACTS	
		SIZE: PCD# N01DWS NC#	REVISION
		B 16K44	A1
		SCALE: NONE	
		S2-15223	
		SHEET 1 OF 1	

SIGNATURES	DATE
DESIGNED: BENJAMIN	6/8/09
CHECKED: FORCE	6/8/09
ENGINEER: BENJAMIN	
APPROVAL: BENJAMIN	6/8/09

UNLESS OTHERWISE SPECIFIED
1) All dimensions are in inches.
2) Tolerances are as follows:
3) Fin. DEC 3.000
4) Hole Reference = A
5) Hole Reference = A
6) Hole Reference = A
7) Hole Reference = A
8) Hole Reference = A
9) Hole Reference = A
10) Hole Reference = A
11) Hole Reference = A
12) Hole Reference = A
13) Hole Reference = A
14) Hole Reference = A
15) Hole Reference = A
16) Hole Reference = A
17) Hole Reference = A
18) Hole Reference = A
19) Hole Reference = A
20) Hole Reference = A
21) Hole Reference = A
22) Hole Reference = A
23) Hole Reference = A
24) Hole Reference = A
25) Hole Reference = A
26) Hole Reference = A
27) Hole Reference = A
28) Hole Reference = A
29) Hole Reference = A
30) Hole Reference = A
31) Hole Reference = A
32) Hole Reference = A
33) Hole Reference = A
34) Hole Reference = A
35) Hole Reference = A
36) Hole Reference = A
37) Hole Reference = A
38) Hole Reference = A
39) Hole Reference = A
40) Hole Reference = A
41) Hole Reference = A
42) Hole Reference = A
43) Hole Reference = A
44) Hole Reference = A
45) Hole Reference = A
46) Hole Reference = A
47) Hole Reference = A
48) Hole Reference = A
49) Hole Reference = A
50) Hole Reference = A
51) Hole Reference = A
52) Hole Reference = A
53) Hole Reference = A
54) Hole Reference = A
55) Hole Reference = A
56) Hole Reference = A
57) Hole Reference = A
58) Hole Reference = A
59) Hole Reference = A
60) Hole Reference = A
61) Hole Reference = A
62) Hole Reference = A
63) Hole Reference = A
64) Hole Reference = A
65) Hole Reference = A
66) Hole Reference = A
67) Hole Reference = A
68) Hole Reference = A
69) Hole Reference = A
70) Hole Reference = A
71) Hole Reference = A
72) Hole Reference = A
73) Hole Reference = A
74) Hole Reference = A
75) Hole Reference = A
76) Hole Reference = A
77) Hole Reference = A
78) Hole Reference = A
79) Hole Reference = A
80) Hole Reference = A
81) Hole Reference = A
82) Hole Reference = A
83) Hole Reference = A
84) Hole Reference = A
85) Hole Reference = A
86) Hole Reference = A
87) Hole Reference = A
88) Hole Reference = A
89) Hole Reference = A
90) Hole Reference = A
91) Hole Reference = A
92) Hole Reference = A
93) Hole Reference = A
94) Hole Reference = A
95) Hole Reference = A
96) Hole Reference = A
97) Hole Reference = A
98) Hole Reference = A
99) Hole Reference = A
100) Hole Reference = A

REVISONS		DESCRIPTION	DATE	BY	APP
REV	ZONE	ECO	RELEASE NUMBER	B.D.B.	M.F.F.
A1	-	-	016871	6/12/09	

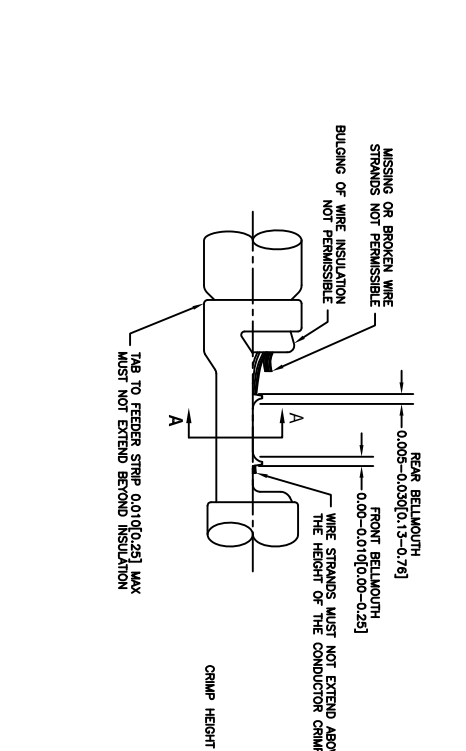
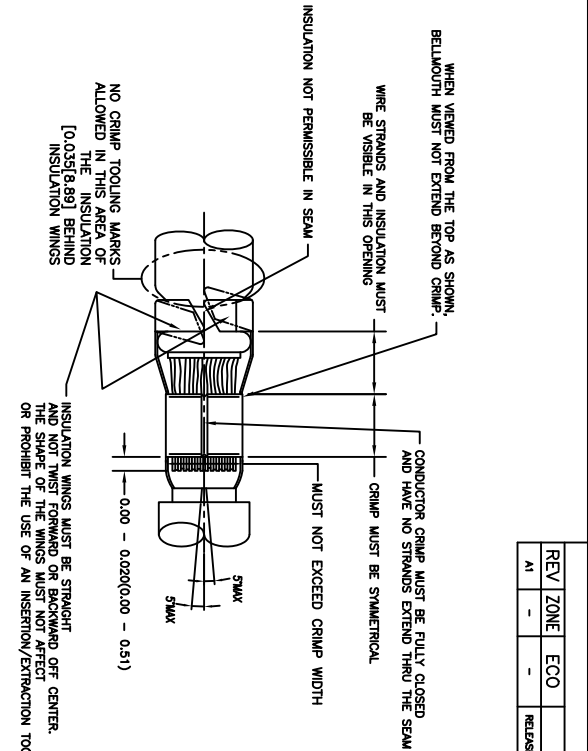
STAMPED CONTACT PART NUMBER 106=PIN 106=SOCKET	SIZE	CONDUCTOR WIRE SIZE	CRIMP HEIGHT	CRIMP WIDTH	CONDUCTOR PUNCH NUMBER	CONDUCTOR ANVIL NUMBER	CRIMP TENSILE REFERENCE
A780-14-011x A782-14-011x INSULATION RANGE 0.095-0.150(2.41-3.81)	16	14 AWG 2.00mm ² 1.50mm ² 16 AWG 1.00mm ² 18 AWG 0.75mm ²	0.055(1.40) 0.051(1.40) 0.051(1.31) 0.050(1.27) 0.049(1.24) 0.048(1.22)	±0.003 NCH ±0.08 mm	AT17-002-0200	AT17-101-0200	29(111)
A780-16-011x A782-16-011x INSULATION RANGE 0.075-0.140(1.91-3.56)	16	14 AWG 2.00mm ² 1.50mm ² 16 AWG 1.00mm ² 18 AWG 0.75mm ²	0.051(1.40) 0.051(1.40) 0.051(1.31) 0.050(1.27) 0.049(1.24) 0.048(1.22)	±0.003 NCH ±0.08 mm	AT17-002-0200	AT17-101-0200	29(111)
A780-16-066x A782-16-066x INSULATION RANGE 0.055-0.100(1.40-2.54)	16	16 AWG 1.00mm ² 0.75mm ² 20 AWG 0.50mm ²	0.050(1.27) 0.049(1.24) 0.048(1.22) 0.045(1.14)	±0.003 NCH ±0.08 mm	AT17-003-0200	AT17-103-0200	29(111) 15(87)

CROSS REFERENCE

SINE PART NUMBER	DEUTSCH PART NUMBER
MFX-3950	DC116-02-00
AT17-002-0200	1017-002-0200
AT17-003-0200	1017-003-0200
AT17-101-0200	1017-101-0200
AT17-103-0200	1017-103-0200
AT17-210-0200	1017-210-0200
AT17-211-0200	1017-211-0200
AT17-213-0200	1017-213-0200
AT17-214-0200	1017-214-0200
AT17-217-0200	1017-217-0200
AT17-218-0200	1017-218-0200
AT17-310-0200	1017-310-0200
AT17-311-0200	1017-311-0200
AT17-313-0200	1017-313-0200
AT17-304-0200	1017-304-0200
AT17-317-0200	1017-317-0200
AT17-318-0200	1017-318-0200

NOTES: UNLESS OTHERWISE SPECIFIED

1. ALL DIMENSIONS ARE IN INCHES(mm).
2. FORCES ARE IN POUNDS(LBS) AND NEWTONS(N).
3. "X"= FLATING SUFFIX. SEE INDIVIDUAL CONTACT DRAWING.
4. WIRE STRIP LENGTH: 0.775±0.029(4.45±0.54). BROKEN OR MISSING CONDUCTOR STRANDS ARE NOT ACCEPTABLE.
5. USE A BLADE MICROMEETER (0.100[2.54] AT PULL RATE SPEED OF 1.00 INCH(2.54) PER MINUTE. INSULATION WINGS ARE REMOVED FOR TEST. ACTUAL CRIMP TENSILE STRENGTH DEPENDS ON WIRE/CONDUCTOR SIZE. VALUES ON THIS SPECIFICATION ARE FOR REFERENCE ONLY.
6. INSULATION DIAMETER RANGE IS DETERMINED BY CONNECTOR AND ITS WIRE SEAL SIZE. SEE CONNECTOR DRAWING FOR INSULATION RANGE.
7. INSULATION CRIMP DIAMETER SHOULD BE THE EQUAL OR LESS THAN THE DIAMETER OF THE WIRE INSULATION (HARD OR TEFION CONNECTOR GROMMET SEAL).
8. CONDUCTOR TYPE ARE PER SAE(1128(AWG)) AND ISO 6722(METRIC)
9. FOR CONTACT MATERIAL AND PERFORMANCE DATA. SEE DRAWING S2-15217.
10. REFER TO S2-15223 AND S2-15224 AND CROSS REFERENCE CHARTS FOR CRIMP TOOL DATA.



ALL REFERENCES TO DEUTSCH PRODUCTS OR SPECIFICATIONS ARE FOR COMPARISON PURPOSES ONLY, AND REFER TO DEUTSCH INDUSTRIAL PRODUCTS.

QUANTITY	PART NUMBER	MATERIALS LIST	DESCRIPTION	ITEM
1	MFX-3950	ROTOR	SINE Systems Corporation	
<p>UNLESS OTHERWISE SPECIFIED</p> <p>1) All dimensions are in inches.</p> <p>2) Force: 30.0 LBS / 133.4 N</p> <p>3) Rate: 1.00 in/min / 25.4 mm/min</p> <p>4) Material: SAE 1018 / 1018</p> <p>5) Production Standards Per: ASME Y14.5</p> <p>6) Material: SS-20020</p> <p>7) Material: BERMUM</p> <p>8) Material: BERMUM</p> <p>9) Material: BERMUM</p> <p>10) Material: BERMUM</p> <p>11) Material: BERMUM</p> <p>12) Material: BERMUM</p> <p>13) Material: BERMUM</p> <p>14) Material: BERMUM</p> <p>15) Material: BERMUM</p> <p>16) Material: BERMUM</p> <p>17) Material: BERMUM</p> <p>18) Material: BERMUM</p> <p>19) Material: BERMUM</p> <p>20) Material: BERMUM</p> <p>21) Material: BERMUM</p> <p>22) Material: BERMUM</p> <p>23) Material: BERMUM</p> <p>24) Material: BERMUM</p> <p>25) Material: BERMUM</p> <p>26) Material: BERMUM</p> <p>27) Material: BERMUM</p> <p>28) Material: BERMUM</p> <p>29) Material: BERMUM</p> <p>30) Material: BERMUM</p> <p>31) Material: BERMUM</p> <p>32) Material: BERMUM</p> <p>33) Material: BERMUM</p> <p>34) Material: BERMUM</p> <p>35) Material: BERMUM</p> <p>36) Material: BERMUM</p> <p>37) Material: BERMUM</p> <p>38) Material: BERMUM</p> <p>39) Material: BERMUM</p> <p>40) Material: BERMUM</p> <p>41) Material: BERMUM</p> <p>42) Material: BERMUM</p> <p>43) Material: BERMUM</p> <p>44) Material: BERMUM</p> <p>45) Material: BERMUM</p> <p>46) Material: BERMUM</p> <p>47) Material: BERMUM</p> <p>48) Material: BERMUM</p> <p>49) Material: BERMUM</p> <p>50) Material: BERMUM</p> <p>51) Material: BERMUM</p> <p>52) Material: BERMUM</p> <p>53) Material: BERMUM</p> <p>54) Material: BERMUM</p> <p>55) Material: BERMUM</p> <p>56) Material: BERMUM</p> <p>57) Material: BERMUM</p> <p>58) Material: BERMUM</p> <p>59) Material: BERMUM</p> <p>60) Material: BERMUM</p> <p>61) Material: BERMUM</p> <p>62) Material: BERMUM</p> <p>63) Material: BERMUM</p> <p>64) Material: BERMUM</p> <p>65) Material: BERMUM</p> <p>66) Material: BERMUM</p> <p>67) Material: BERMUM</p> <p>68) Material: BERMUM</p> <p>69) Material: BERMUM</p> <p>70) Material: BERMUM</p> <p>71) Material: BERMUM</p> <p>72) Material: BERMUM</p> <p>73) Material: BERMUM</p> <p>74) Material: BERMUM</p> <p>75) Material: BERMUM</p> <p>76) Material: BERMUM</p> <p>77) Material: BERMUM</p> <p>78) Material: BERMUM</p> <p>79) Material: BERMUM</p> <p>80) Material: BERMUM</p> <p>81) Material: BERMUM</p> <p>82) Material: BERMUM</p> <p>83) Material: BERMUM</p> <p>84) Material: BERMUM</p> <p>85) Material: BERMUM</p> <p>86) Material: BERMUM</p> <p>87) Material: BERMUM</p> <p>88) Material: BERMUM</p> <p>89) Material: BERMUM</p> <p>90) Material: BERMUM</p> <p>91) Material: BERMUM</p> <p>92) Material: BERMUM</p> <p>93) Material: BERMUM</p> <p>94) Material: BERMUM</p> <p>95) Material: BERMUM</p> <p>96) Material: BERMUM</p> <p>97) Material: BERMUM</p> <p>98) Material: BERMUM</p> <p>99) Material: BERMUM</p> <p>100) Material: BERMUM</p>				
<p>PROCESS SPECIFICATIONS</p> <p>1) All dimensions are in inches.</p> <p>2) Force: 30.0 LBS / 133.4 N</p> <p>3) Rate: 1.00 in/min / 25.4 mm/min</p> <p>4) Material: SAE 1018 / 1018</p> <p>5) Production Standards Per: ASME Y14.5</p> <p>6) Material: SS-20020</p> <p>7) Material: BERMUM</p> <p>8) Material: BERMUM</p> <p>9) Material: BERMUM</p> <p>10) Material: BERMUM</p> <p>11) Material: BERMUM</p> <p>12) Material: BERMUM</p> <p>13) Material: BERMUM</p> <p>14) Material: BERMUM</p> <p>15) Material: BERMUM</p> <p>16) Material: BERMUM</p> <p>17) Material: BERMUM</p> <p>18) Material: BERMUM</p> <p>19) Material: BERMUM</p> <p>20) Material: BERMUM</p> <p>21) Material: BERMUM</p> <p>22) Material: BERMUM</p> <p>23) Material: BERMUM</p> <p>24) Material: BERMUM</p> <p>25) Material: BERMUM</p> <p>26) Material: BERMUM</p> <p>27) Material: BERMUM</p> <p>28) Material: BERMUM</p> <p>29) Material: BERMUM</p> <p>30) Material: BERMUM</p> <p>31) Material: BERMUM</p> <p>32) Material: BERMUM</p> <p>33) Material: BERMUM</p> <p>34) Material: BERMUM</p> <p>35) Material: BERMUM</p> <p>36) Material: BERMUM</p> <p>37) Material: BERMUM</p> <p>38) Material: BERMUM</p> <p>39) Material: BERMUM</p> <p>40) Material: BERMUM</p> <p>41) Material: BERMUM</p> <p>42) Material: BERMUM</p> <p>43) Material: BERMUM</p> <p>44) Material: BERMUM</p> <p>45) Material: BERMUM</p> <p>46) Material: BERMUM</p> <p>47) Material: BERMUM</p> <p>48) Material: BERMUM</p> <p>49) Material: BERMUM</p> <p>50) Material: BERMUM</p> <p>51) Material: BERMUM</p> <p>52) Material: BERMUM</p> <p>53) Material: BERMUM</p> <p>54) Material: BERMUM</p> <p>55) Material: BERMUM</p> <p>56) Material: BERMUM</p> <p>57) Material: BERMUM</p> <p>58) Material: BERMUM</p> <p>59) Material: BERMUM</p> <p>60) Material: BERMUM</p> <p>61) Material: BERMUM</p> <p>62) Material: BERMUM</p> <p>63) Material: BERMUM</p> <p>64) Material: BERMUM</p> <p>65) Material: BERMUM</p> <p>66) Material: BERMUM</p> <p>67) Material: BERMUM</p> <p>68) Material: BERMUM</p> <p>69) Material: BERMUM</p> <p>70) Material: BERMUM</p> <p>71) Material: BERMUM</p> <p>72) Material: BERMUM</p> <p>73) Material: BERMUM</p> <p>74) Material: BERMUM</p> <p>75) Material: BERMUM</p> <p>76) Material: BERMUM</p> <p>77) Material: BERMUM</p> <p>78) Material: BERMUM</p> <p>79) Material: BERMUM</p> <p>80) Material: BERMUM</p> <p>81) Material: BERMUM</p> <p>82) Material: BERMUM</p> <p>83) Material: BERMUM</p> <p>84) Material: BERMUM</p> <p>85) Material: BERMUM</p> <p>86) Material: BERMUM</p> <p>87) Material: BERMUM</p> <p>88) Material: BERMUM</p> <p>89) Material: BERMUM</p> <p>90) Material: BERMUM</p> <p>91) Material: BERMUM</p> <p>92) Material: BERMUM</p> <p>93) Material: BERMUM</p> <p>94) Material: BERMUM</p> <p>95) Material: BERMUM</p> <p>96) Material: BERMUM</p> <p>97) Material: BERMUM</p> <p>98) Material: BERMUM</p> <p>99) Material: BERMUM</p> <p>100) Material: BERMUM</p>				
<p>CRIMP DATA, STAMPED CONTACTS FOR CRIMPER MFX-3950</p> <p>SIZE: 10K44</p> <p>SCALE: NONE</p> <p>S2-15222</p> <p>SHEET: 1 OF 1</p>				

REVISIONS						
REV	ZONE	ECO	DESCRIPTION	DATE	BY	APP
A1	-	-	RELEASE NUMBER 016971	6/12/09	B.O.B.	M.F.F.

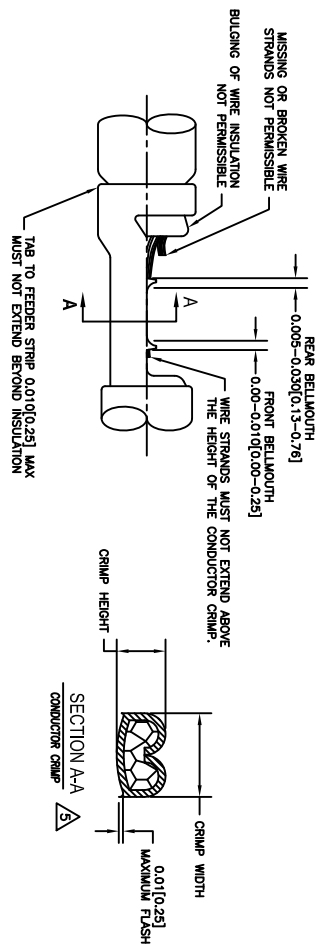
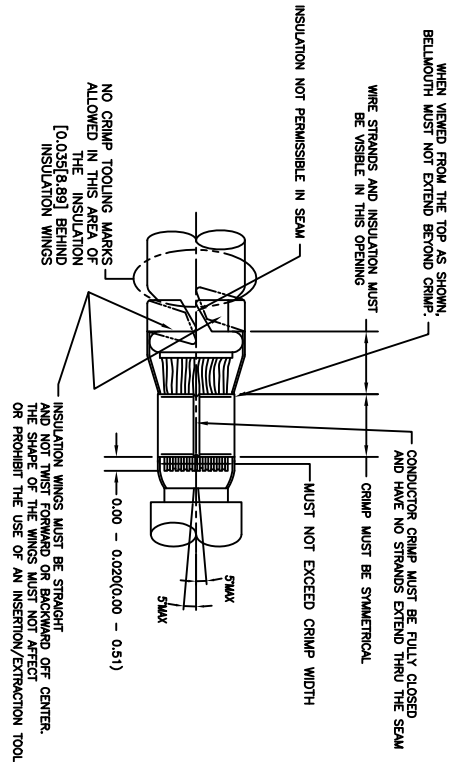
STAMPED CONTACT PART NUMBER (1009=PIN, 1009=SOCKET)	SIZE	CONDUCTOR WIRE SIZE	CRIMP HEIGHT (+0.001/-0.002 INCH / +0.025/-0.05 mm)	CRIMP WIDTH (±0.013 INCH / ±0.08 mm)	CONDUCTOR PUNCH NUMBER	CONDUCTOR ANVIL NUMBER	CRIMP TENSILE REFERENCE (LBS/IN)
A160-14-01xx A162-14-01xx INSULATION RANGE 0.095-0.150(2.41-3.81)	16	14 AWG	0.055(1.40)	0.094(2.39)			
		2.00mm ²	0.055(1.40)	0.094(2.39)			
		1.50mm ²	0.053(1.33)	0.094(2.39)			
		16 AWG	0.050(1.27)	0.094(2.39)	A117-083-0200	A117-183-0200	29(111)
A160-16-01xx A162-16-01xx INSULATION RANGE 0.075-0.140(1.91-3.59)	16	14 AWG	0.055(1.40)	0.094(2.39)			
		2.00mm ²	0.055(1.40)	0.094(2.39)			
		1.50mm ²	0.053(1.33)	0.094(2.39)			
		16 AWG	0.050(1.27)	0.094(2.39)	A117-083-0200	A117-183-0200	29(111)
A160-18-06xx A162-18-06xx INSULATION RANGE 0.055-0.100(1.40-2.54)	16	16 AWG	0.050(1.27)	0.079(2.01)			
		1.00mm ²	0.048(1.22)	0.079(2.01)			
		20 AWG	0.048(1.22)	0.079(2.01)	A117-082-0200	A117-182-0200	29(111)
		0.50mm ²	0.045(1.14)	0.079(2.01)			19(67)

CROSS REFERENCE

INSULATION DIAMETER RANGE	INSULATION PUNCH NUMBER	INSULATION ANVIL NUMBER	SINE PART NUMBER	DEUTSCH PART NUMBER
0.120-0.150 [3.05-3.81]	A117-225-0200	A117-325-0200	MPX-3953	DCT1620-02-00
0.105-0.125 [2.67-3.18]	A117-226-0200	A117-326-0200	A117-082-0200	1017-082-0200
0.085-0.111 [2.16-2.82]	A117-227-0200	A117-327-0200	A117-182-0200	1017-182-0200
0.075-0.105 [1.91-2.67]	A117-228-0200	A117-328-0200	A117-225-0200	1017-225-0200
0.063-0.094 [1.62-2.39]	A117-229-0200	A117-329-0200	A117-226-0200	1017-226-0200
0.050-0.075 [1.27-1.91]	A117-230-0200	A117-330-0200	A117-228-0200	1017-228-0200
			A117-229-0200	1017-229-0200
			A117-230-0200	1017-230-0200
			A117-325-0200	1017-325-0200
			A117-326-0200	1017-326-0200
			A117-327-0200	1017-327-0200
			A117-328-0200	1017-328-0200
			A117-329-0200	1017-329-0200
			A117-330-0200	1017-330-0200

NOTES: UNLESS OTHERWISE SPECIFIED

1. ALL DIMENSIONS ARE IN INCHES(mm).
2. FORCES ARE IN POUNDS(LBS) AND NEWTONS(N).
3. "X"= PLATING SUFFIX. SEE INDIVIDUAL CONTACT DRAWING.
4. WIRE STRIP LENGTH: 0.175±0.029(4.43±0.54). BROKEN OR MISSING CONDUCTOR STRANDS ARE NOT ACCEPTABLE. USE A BLADE MICROMETER (0.100[2.54] MIN SPINDLE AND 0.060[0.010][1.50][0.040] ANVIL) TO MEASURE THE CONDUCTOR CRIMP. SEE SECTION AA.
5. CRIMP TENSILE STRENGTH IS DETERMINED AT A PULL RATE SPEED OF 1.00 INCH(2.54) PER MINUTE. INSULATION WINGS ARE REMOVED FOR TEST. ACTUAL CRIMP TENSILE STRENGTH DEPENDS ON WIRE/CONDUCTOR SIZE. VALUES ON THIS SPECIFICATION ARE FOR REFERENCE ONLY.
6. INSULATION DIAMETER RANGE IS DETERMINED BY CONNECTOR AND ITS WIRE SEAL SIZE. SEE CONNECTOR DRAWING FOR INSULATION RANGE.
7. INSULATION CRIMP DIAMETER SHOULD BE THE EQUAL OR LESS THAN THE DIAMETER OF THE WIRE INSULATION (HARD OR TEFION INSULATION MAY BE AN EXCEPTION). INSULATION CRIMP SHALL NOT AFFECT REMOVAL TOOL PERFORMANCE AND SHALL NOT DAMAGE CONNECTOR GROMMET SEAL.
8. CONDUCTOR TYPE ARE PER SAE J1128(AWG) AND ISO 6722(METRIC)
9. FOR CONTACT MATERIAL AND PERFORMANCE DATA, SEE DRAWING S2-15217.
10. REFER TO S2-15223 AND S2-15224 AND CROSS REFERENCE CHARTS FOR CRIMP TOOL DATA.



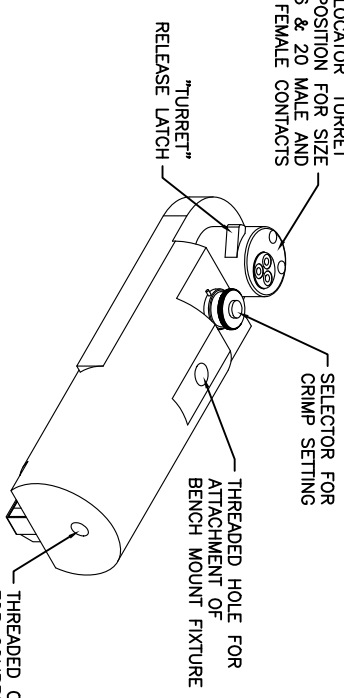
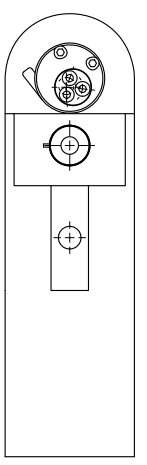
ALL REFERENCES TO DEUTSCH PRODUCTS OR SPECIFICATIONS ARE FOR COMPARISON PURPOSES ONLY, AND REFER TO DEUTSCH INDUSTRIAL PRODUCTS.

QUANTITY	PART NUMBER	DESCRIPTION	ITEM
MATERIALS LIST			
SINE SYSTEMS CORPORATION			
A Subsidiary of Amphenol Corporation			
44724 Moley Drive			
Clinton Township, MI 48036			
CRIMP DATA, STAMPED CONTACTS FOR CRIMPER MPX-3953			
SIZE	FRSD NO	DATE	REV
C	10K44	S2-15221	A1
SCALE	NONE	SHEET	1 OF 1

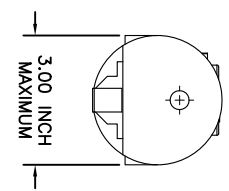
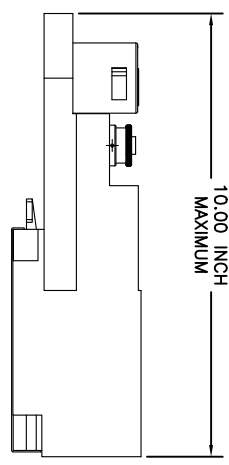
UNLESS OTHERWISE SPECIFIED	SIGNATURES	DATE
1) All dimensions are in inches.	DATE: 4/7/09	
2) 1 Pt. DEC 30.00 1 Alpha 3.1/4	ORDER: 6/8/09	
3) 1 Pt. DEC 30.00 1 Alpha 3.1/4	ENGINEER: BERNI	
4) 1 Pt. DEC 30.00 1 Alpha 3.1/4	APPROVAL: BERNI	6/8/09
5) Reduction Standard Per: ASME Y14.5-2002	CUSTOMER: NA	
6) 1 Pt. DEC 30.00 1 Alpha 3.1/4		
7) 1 Pt. DEC 30.00 1 Alpha 3.1/4		
8) 1 Pt. DEC 30.00 1 Alpha 3.1/4		
9) 1 Pt. DEC 30.00 1 Alpha 3.1/4		
10) 1 Pt. DEC 30.00 1 Alpha 3.1/4		
11) 1 Pt. DEC 30.00 1 Alpha 3.1/4		
12) 1 Pt. DEC 30.00 1 Alpha 3.1/4		
13) 1 Pt. DEC 30.00 1 Alpha 3.1/4		
14) 1 Pt. DEC 30.00 1 Alpha 3.1/4		
15) 1 Pt. DEC 30.00 1 Alpha 3.1/4		
16) 1 Pt. DEC 30.00 1 Alpha 3.1/4		
17) 1 Pt. DEC 30.00 1 Alpha 3.1/4		
18) 1 Pt. DEC 30.00 1 Alpha 3.1/4		
19) 1 Pt. DEC 30.00 1 Alpha 3.1/4		
20) 1 Pt. DEC 30.00 1 Alpha 3.1/4		

REVISONS		DESCRIPTION	DATE	BY	APPR
REV	ZONE	ECO	RELEASE NUMBER 016571	6/12/09	B.D.B. M.R.F.
AI	-	-			

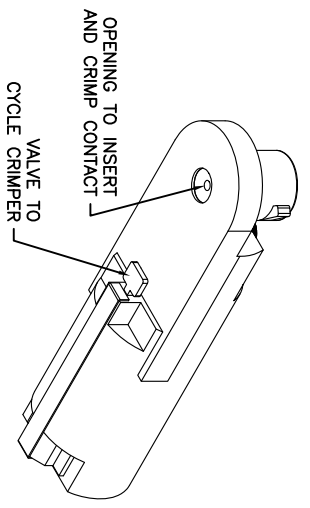
CONTACT LOCATOR "TURRET"
THREE POSITION FOR SIZE
12, 16 & 20 MALE AND
FEMALE CONTACTS



THREADED OPENING
FOR COMPRESSED
AIR FITTING

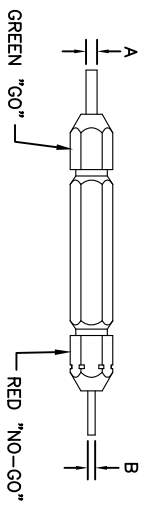


- NOTES:
1. THE CA-5E12 IS A COMPRESSED AIR OPERATED HAND CRIMPER FOR ELECTRICAL CONTACTS. IT IS ADJUSTABLE TO 3 CONTACT SIZES (12, 16 & 20) AND 8 INDENTER CRIMP POSITIONS FOR DIFFERENT WIRE SIZES (12AWG THRU 26 AWG).
 2. 80-120 PSI COMPRESSED AIR.
 3. WEIGHT: 3.1 LBS
 4. SELECTING CONTACT SIZE: PRESS THE RELEASE LATCH ON SIDE OF THE CONTACT LOCATOR "TURRET". ROTATE TO THE DESIRED CONTACT SIZE. THE TOP OF THE "TURRET" IS EMBOSSED WITH THE CONTACT SIZES.
 5. SELECTING WIRE SIZE: GRASP THE SELECTOR AND ROTATE TO THE DESIRED NUMBER.



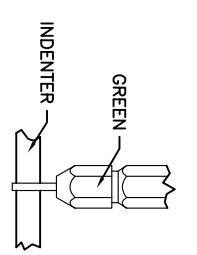
GAGE PART NO.	A GO DIA.	B NO-GO DIA.	SELECTOR NUMBER
G125	.0390	.0440	4

GAGING INSTRUCTIONS
CAUTION!
DO NOT CRIMP GAGE!



"GO" GAGING: OPERATE TOOL TO FULLY CLOSED POSITION. INSERT "GO" GAGE END AS SHOWN. GAGE MUST PASS FREELY BETWEEN INDENTER TIPS.

"NO-GO" GAGING: OPERATE TOOL TO FULLY CLOSED POSITION. INSERT "NO-GO" GAGE END AS SHOWN. THE "NO-GO" MAY PARTIALLY ENTER THE INDENTER OPENING, BUT MUST NOT PASS COMPLETELY THROUGH THE OPENING.



SELECTOR NUMBER	A GO DIA.	B NO-GO DIA.
1	.0280	.0330
2	.0320	.0370
3	.0360	.0410
4	.0390	.0440
5	.0450	.0500
6	.0520	.0570
7	.0590	.0640
8	.0680	.0730

CONTACT SIZE	LOCATOR "TURRET" POSITION	WIRE COLOR	SELECTOR NUMBER
20-20	RED	1	2
16-22	BLUE	4	5
16-20	BLUE	1	2
16-16	BLUE	4	5
12-16	YELLOW	4	5
12-12	YELLOW		7
			8

QUANTITY	PART NUMBER	DESCRIPTION	ITEM

MATERIALS LIST		DESCRIPTION	
UNLESS OTHERWISE SPECIFIED	SIGNATURES	DATE	
1. All dimensions are in inches.	DATE:	6/2/09	
2. Pl. SEC 34.00 1 Position 3.1/4"	DATE:	6/3/09	
3. Pl. SEC 34.00 1 Position 3.1/4"	DATE:	6/3/09	
4) Rev. SS-20020	DATE:	6/3/09	
APPROVAL:	DATE:	6/3/09	
APPROVAL:	DATE:	6/3/09	

SINE Systems Corporation
A Subsidiary of Amphenol Corporation
44724 Mowley Drive
Canton Township, MI 48036

INSTRUCTIONS FOR CA-5E12 CRIMPER, PNEUMATIC

PROCESS SPECIFICATIONS:	SIZE (PSIA) (AWG) (WIRE)	SCALE	REVISION
NA	10K/4	S2-15220	A1
THE USE OF THIS DRAWING IS SPECIFIC TO THE DESIGN AND PERFORMANCE OF THE PARTS IDENTIFIED HEREIN. ANY OTHER USE OF THIS DRAWING WITHOUT THE WRITTEN PERMISSION OF AMPHENOL CORP. IS PROHIBITED. ALL DIMENSIONS REFERENCED HEREIN UNLESS OTHERWISE SPECIFIED ARE IN INCHES.			

REV ZONE		ECO		REVISIONS		DESCRIPTION	DATE	BY	APPR
AI	-	-	-	RELEASE NUMBER	016571		6/12/09	B.D.B.	M.R.F.

CONTACT LOCATOR
"TURRET"
THREE POSITIONS FOR
SIZE 12, 16 & 20 MALE
AND FEMALE CONTACTS

"TURRET" RELEASE LATCH

6.25 INCH
MAXIMUM
OPEN

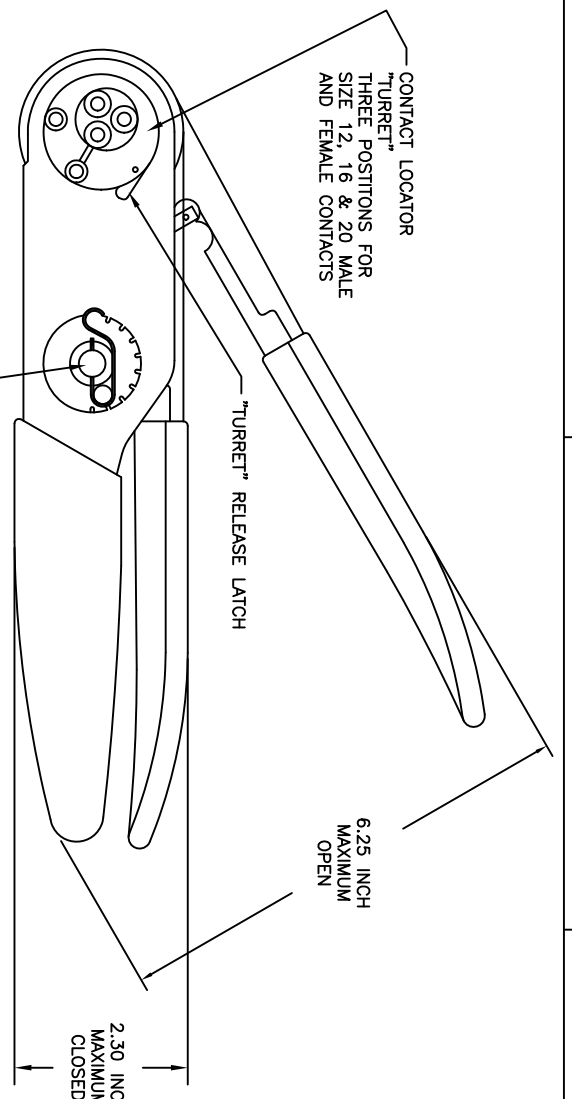
2.30 INCH
MAXIMUM
CLOSED

SELECTOR FOR CRIMP
SETTING

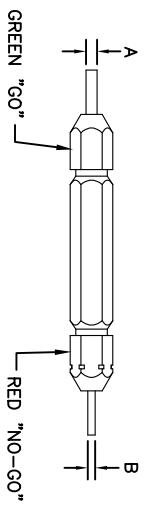
1.125 INCH MAX.

9.75 INCH MAXIMUM

1.00 INCH MAX.



GAGE PART NO.	A GO DIA.	B NO-GO DIA.	SELECTOR NUMBER
G125	.0390	.0440	4

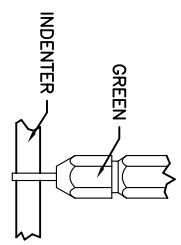


GAGING INSTRUCTIONS

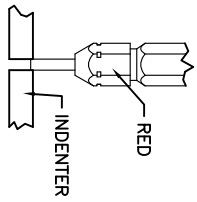
CAUTION!
DO NOT CRIMP GAGE!

"GO" GAGING: OPERATE TOOL TO FULLY CLOSED POSITION. INSERT "GO" GAGE END AS SHOWN. GAGE MUST PASS FREELY BETWEEN INDENTER TIPS.

"NO-GO" GAGING: OPERATE TOOL TO FULLY CLOSED POSITION. INSERT "NO-GO" GAGE END AS SHOWN. THE "NO-GO" MAY PARTIALLY ENTER THE INDENTER OPENING, BUT MUST NOT PASS COMPLETELY THROUGH THE OPENING.



SELECTOR NUMBER	A GO DIA.	B NO-GO DIA.
1	.0280	.0330
2	.0320	.0370
3	.0360	.0410
4	.0390	.0440
5	.0450	.0500
6	.0520	.0570
7	.0590	.0640
8	.0880	.0730



- NOTES:
- THE CA-5D12 IS A HAND OPERATED CRIMPER FOR ELECTRICAL CONTACTS. IT IS ADJUSTABLE TO 3 CONTACT SIZES (12, 16 & 20) AND 8 INDENTER CRIMP POSITIONS FOR DIFFERENT WIRE SIZES (12AWG THRU 26 AWG).
 - WEIGHT: 1.64 LBS
 - SELECTING CONTACT SIZE: PRESS THE RELEASE LATCH ON SIDE OF THE CONTACT LOCATOR "TURRET". ROTATE TO THE DESIRED CONTACT SIZE. THE TOP OF THE "TURRET" IS EMBOSSED WITH THE CONTACT SIZES.
 - SELECTING WIRE SIZE: REMOVE THE LOCKING CLIP. GRASP THE SELECTOR AND ROTATE TO THE DESIRED NUMBER.

CONTACT SIZE	LOCATOR POSITION	WIRE COLOR	WIRE AWG	WIRE AWG	WIRE AWG	WIRE AWG	WIRE AWG	WIRE AWG	WIRE AWG
20-20	RED	1	2	3	4				
16-22	BLUE	4	5	6					
16-20	BLUE	1	2	3	4				
16-16	BLUE	4	5	6					
12-16	YELLOW	4	5	6					
12-12	YELLOW								8

QUANTITY	PART NUMBER	DESCRIPTION	ITEM

SINE Systems Corporation
A Subsidiary of Amphenol Corporation
44724 Moley Drive
Canton Township, MI 48036

INSTRUCTIONS FOR CA-5D12 CRIMPER, HAND, MACHINED CONTACTS

SIZE: 10K44
SCALE: NONE
S2-15219
SHEET 1 OF 1

UNLESS OTHERWISE SPECIFIED	SIGNATURES	DATE
1) All dimensions are in inches.	DESIGN: BERNIM	6/3/09
2) Pl. DEC 2000	CHECKED: NONE	6/3/09
3) Pl. DEC 2000	ENGINEER: BERNIM	
4) Pl. DEC 2000	APPROVAL: BERNIM	6/3/09

PROCESS SPECIFICATIONS:	THE USE OF THIS DRAWING IS LIMITED TO THE SPECIFICATIONS AND REQUIREMENTS OF THE ORIGINAL DESIGN. ANY REVISIONS OR MODIFICATIONS ARE SUBJECT TO ORIGINAL DESIGNER'S REVIEWED HEREON. ALL DOCUMENTS RETAINED HEREON. ANY OTHER UNLTD RIGHTS DATA.
MA: N/A	

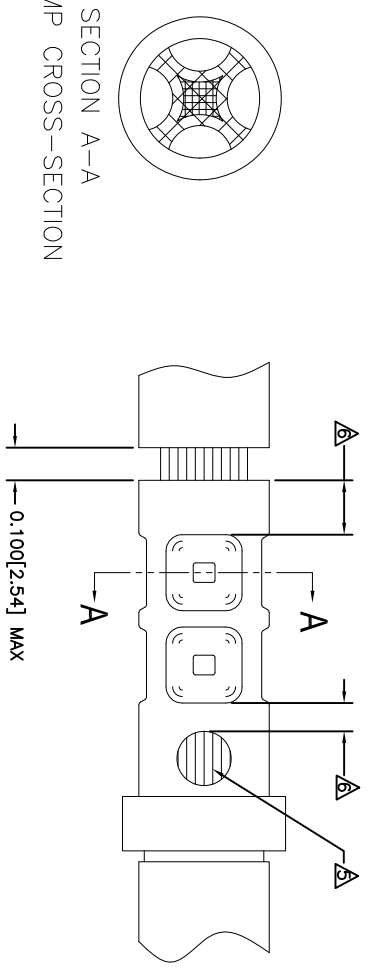
REVOLUTIONS		DESCRIPTION	DATE	BY	APPR
REV	ZONE	ECO	RELEASE NUMBER 016571	B.D.B.	M.R.F.
A1	-	-	6/12/09		

CONTACT P/N	SIZE TYPE	WIRE SIZE	REF. ONLY TENSILE LBS[N]
AT60-202-16XX	16PIN	1.5mm ² 16AWG	35[156]
AT62-201-16XX	16SOC	1.0mm ² 18AWG	25[111]
		0.75mm ² 20AWG	20[89]
		0.50mm ²	

RECOMMENDED STRIP LENGTH	
CONTACT SIZE	STRIP LENGTH INCH[MM]
16	0.250-0.312[6.35-7.92]

CRIMP TOOLING						
CONTACT SIZE	CRIMP TOOL PART NUMBER	CONTACT LOCATOR "TURRET" POSITION	WIRE SELECTOR NUMBER	GO GAGE INCH[MM]	"NOGO" GAGE INCH[MM]	REMARKS
16	CA-5D12 CA-5E12	BLUE	6	0.052[1.32]	0.057[1.45]	
16	CA-5D12 CA-5E12	BLUE	4	0.039[.991]	0.044[1.12]	SIZE 16 WITH 20 AWG WIRE

- NOTES: UNLESS OTHERWISE SPECIFIED
- 1. MINIMUM +/-0.0005 [0.013] TOLERANCE STEEL GAGE PINS. DO NOT CRIMP GAGE PINS. CLOSE DIE, THEN USE GAGE PINS.
 - 2. WHEN XX=31, CONTACT PLATING IS GOLD WHEN XX=141, CONTACT PLATING IS NICKEL
 - 3. PULL RATE OF 1.0 IN [25.4] PER MINUTE. ACTUAL STRENGTH DEPENDS ON WIRE SIZE.
 - 4. FOR CONTACT PERFORMANCE, MATERIAL SPECIFICATIONS AND APPLICATION DETAILS, SEE DRAWING S2-15217.
 - 5. CONDUCTOR STRANDS MUST BE VISIBLE THRU THE INSPECTION HOLE PRIOR TO CRIMP.
 - 6. PROPER CRIMP TOOLING WILL PRODUCE A CRIMP CENTERED BETWEEN THE INSPECTION HOLE AND CRIMP BARREL END.
 - 7. WIRE SIZES PER SAE J1128 AND J1560 [DIN 72551-6] REFERENCE INSTRUCTION MANUALS S2-15219 AND S2-15220 FOR CA-5D12 AND CA-5E12 HAND AND PNEUMATIC CRIMPER.
 - 8. THE CRIMP HEIGHT DIMENSION AFTER CRIMPING MAY VARY FROM THE VALUES LISTED FOR THE "GO-NOGO" PINS.



SECTION A-A
CRIMP CROSS-SECTION

QUANTITY	PART NUMBER	DESCRIPTION	ITEM
UNLESS OTHERWISE SPECIFIED			
1) All dimensions are in inches.			
2) Pl. SEE 34.00 [1.00] Precision 31/64			
3) Pl. SEE 34.01 [1.00] Angles 31/64			
4) Pl. SEE 34.02 [1.00] Angles 31/64			
5) Fabrication Standards Per:			
a) MIL-STD-20020			
b) MIL-STD-20020			
c) MIL-STD-20020			
d) MIL-STD-20020			
MATERIAL SPECIFICATIONS:			
MA			
PROCESS SPECIFICATIONS:			
NEXT ASSY:			
SIGNATURES		DATE	
DESIGNER: BERNUIM	6/3/09		
CHECKER: RONE	6/3/09		
ENGINEER: BERNUIM			
APPROVAL: BERNUIM	6/3/09		
CUSTOMER:		DATE:	
MA			
THE USE OF THIS DRAWING IS LIMITED TO THE SPECIFIC APPLICATIONS, AND PERFORMANCE SPECIFICATIONS, AND PERFORMANCE PRESENTED HEREON. ANY OTHER USE OF THIS DRAWING WITHOUT THE WRITTEN PERMISSION OF AMPHENOL CORP. ALL DIMENSIONS ARE SUBJECT TO NORMAL VARIATION. THIS DRAWING IS THE PROPERTY OF AMPHENOL CORP. AND IS NOT TO BE REPRODUCED OR TRANSMITTED IN ANY FORM OR BY ANY MEANS, ELECTRONIC OR MECHANICAL, INCLUDING PHOTOCOPYING, RECORDING, OR BY ANY INFORMATION STORAGE AND RETRIEVAL SYSTEM. AMPHENOL CORP. 441724 Molex Drive, Clinton Township, MI 48036			
CRIMP INFORMATION		SOLID MACHINED CONTACTS	
SIZE [PSIA NOTIFIER NO.:	S2-15218	SCALE:	NONE
REV:	A1	SHEET:	1 OF 1

REVISIONS						
REV	ZONE	ECO	DESCRIPTION	DATE	BY	APPR
A1	-	-	RELEASE NUMBER 016571	6/12/08	B.D.B.	M.R.F.

SOLID CONTACT SIZE	SOLID CONTACT PART NUMBERS		WIRE SIZE AVG (mm ²)	RECOMMENDED STRIP LENGTH INCH (mm)	MIN CONTACT RETENTION LBS (N)	REF CRIMP TENSILE LBS (N)	MAX RATED AMPS @ 125°C CONTINUOUS
	PIN	SOCKET					
16	AT60-202-16**	AT62-201-16**	16-20 [1.5-0.5]	0.25-0.31 [6.35-7.92]	25 [1111]	35-20 [156-89]	13

S&P CONTACT SIZE	STAMPED CONTACT PART NUMBERS		WIRE SIZE AVG (mm ²)	WIRE INSULATION O.D. RANGE	RECOMMENDED STRIP LENGTH INCH (mm)	MIN CONTACT RETENTION LBS (N)	REF CRIMP TENSILE LBS (N)	MAX RATED AMPS @ 125°C CONTINUOUS
	PIN	SOCKET						
16	AT60-14-01**	AT62-14-01**	14-16 [2.0-1.0]	.100 - .150 [2.54 - 3.81]	0.150-0.200 [3.81-5.08]	25 [1111]	25 [1111]	13
16	AT60-16-01**	AT62-16-01**	16-18 [1.0-0.75]	.075 - .100 [1.90 - 2.54]	0.150-0.200 [3.81-5.08]	25 [1111]	25 [1111]	13
16	AT60-16-06**	AT62-16-06**	18-20 [0.75-0.50]	.055 - .095 [1.40 - 2.41]	0.150-0.200 [3.81-5.08]	25 [1111]	25-15 [111+67]	13

WIRE AWG	CONTACT RESISTANCE STRENGTH (LESS DROP THROUGH WIRE)		
	TEST CURRENT	MILLIVOLT DROP SOLID	MILLIVOLT DROP S&P
14	18	60	100
16	13	60	100
18	10	60	100
20	7.5	60	100

MATERIAL SPECIFICATION AND PLATING ** CODES	
PIN: COPPER ALLOY	SOCKET: COPPER ALLOY WITH STAINLESS STEEL SLEEVE
SOLID MACHINED CONTACT PLATING OPTIONS: Δ 31= GOLD* 141= NICKEL	
STAMPED CONTACT PLATING OPTIONS: Δ 22= NICKEL 44= GOLD* 89= SELECTIVE GOLD*	
GOLD* PLATING IS AVAILABLE (RECOMMENDED) FOR ONLY (<5V) CIRCUIT APPLICATIONS MATERIALS AND PLATINGS ARE ROHS COMPLIANT	

NOTES: UNLESS OTHERWISE SPECIFIED

1. ALL DIMENSIONS ARE INCHES(MM).
2. ALL FORCES ARE IN LBS(POUNDS) AND "N" (NEWTONS).
3. CONTACT RETENTION TEST PULL RATE SHALL BE 1.0 INCH/25.4 PER MINUTE MAXIMUM. WIRE SIZE WILL AFFECT THE TRUE STRENGTH OF THE CRIMP.
4. WIRE SIZES AND INSULATION RANGES ARE FOR REFERENCE ONLY. THE ACTUAL INSULATION RANGE DEPENDS ON CONNECTOR GROMMET SEALING SIZE.

SEE SPECIFICATIONS LISTED BELOW FOR INDIVIDUAL CRIMP INFORMATION:

"SOLID" CONTACTS	SIZE	"STAMPED" CONTACTS	SIZE
	S2-15218		S2-15222
	16		16
			S2-15221
			16/20

1. MAXIMUM RATED CURRENT IN CHART DEPENDS ON CONTACT SIZE. ACTUAL RATED CURRENT DEPENDS ON WIRE SIZE.
2. CONTACT FACTORY FOR ALL AVAILABLE PLATING ON SPECIFIC CONTACTS.
3. AMPHENOL SINE PERFORMANCE SPECIFICATIONS REQUIRE THE USE OF AMPHENOL SINE APPROVED TOOLING.

QUANTITY	PART NUMBER	DESCRIPTION	ITEM
MATERIALS LIST			
UNLESS OTHERWISE SPECIFIED		SIGNATURES	
1) All dimensions are in inches.		DATE	
2) Pl. SEE 30.00		ORDER: RORR 4/5/09	
3) Pl. SEE 30.00		ORDER: RORR 6/3/09	
4) Pl. SEE 30.00		ENGINEER: BERNI	
5) Fabrication Standards Per: SS-20020		APPROVAL: BERNI 6/3/09	
6) Material Specifications: NA		CUSTOMER: AMPHENOL	
7) Process Specifications: NA		APPROVAL: BERNI 6/3/09	
8) Next Ass't:		THE USE OF THIS DRAWING IS LIMITED TO THE SPECIFIC PARTS, MATERIALS, AND PERFORMANCE SPECIFICATIONS AND REQUIREMENTS PRESENT ON THIS DRAWING. ALL DIMENSIONS ARE SUBJECT TO NORMAL MANUFACTURING VARIATIONS. AMPHENOL ASSUMES NO LIABILITY FOR DOCUMENTS REFERENCED HEREON UNLESS SO INDICATED BY THIS DRAWING.	
SIZE: Pcs/Kit		SCALE: NONE	
C 10K/44		S2-15217	
SHEET 1 OF 1		REVISION A1	

SINE Systems Corporation
A Subsidiary of Amphenol Corporation
441724 Moley Drive
Clinton Township, MI 48036

GENERAL DATA, CONTACTS STAMPED AND FORMED / MACHINED