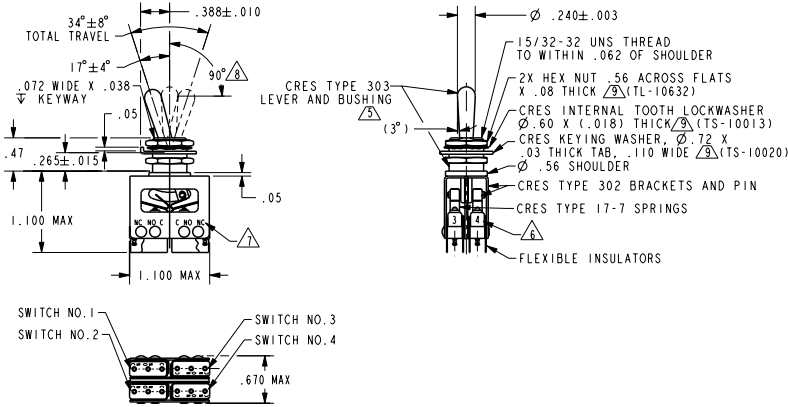


64AT26 SERIES CHART 1

CATALOG LISTING	KEYWAY POSITION		CENTER POSITION		OPPOSITE KEYWAY POSITION	
	C-NC	C-NO	C-NO	C-NC	C-NC	C-NO
64AT26-1	1 & 2	3 & 4	NONE	ALL	3 & 4	1 & 2
64AT26-3	1 & 2	3 & 4	NONE	NONE	3 & 4	1 & 2
64AT26-5	1 & 2*	3 & 4*	NONE	ALL	3 & 4	1 & 2
64AT26-7	1 & 2*	3 & 4*	NONE	ALL	3 & 4*	1 & 2*
64AT26-514	1 & 2	3 & 4	NONE	ALL	3 & 4*	1 & 2*

* ASTERISK DENOTES MOMENTARY POSITION

SPECIFICATION DETAILS:	
STANDARD:	
CONSTRUCTION:	UNSEALED
ENCLOSURE DESIGN	UNSEALED
CONTACT MATERIAL & CONFIGURATION	SW 1 & 3 24K GOLD OVERLAY CONTACTS 23SX CONSTRUCTION SW 2 & 4 SOLID SILVER CONTACTS 21SX CONSTRUCTION
CIRCUIT CONFIGURATION	
TERMINATION	-H58
WEIGHT	1 LB MAX
EXPOSED METALS	CORROSION RESISTANT AS NOTED
ELECTRICAL CHARACTERISTICS:	
CONTACT ARRANGEMENT	4X S.P.D.T.
SWITCH NO. 1 AND 3	SWITCH NO. 2 AND 4
30 VOLTS DC RATING	28 VOLTS DC RATING
INDUCTIVE - SEA LEVEL - .5 AMP	INDUCTIVE - SEA LEVEL - .5 AMP
INDUCTIVE - 50,000 FT - .5 AMP	INDUCTIVE - 50,000 FT - 2.5 AMP
RESISTIVE - SEA LEVEL - 1 AMP	RESISTIVE - SEA LEVEL - 7 AMP
RESISTIVE - 50,000 FT - 1 AMP	INDUCTIVE AND RESISTIVE - 7 AMP
MAX INRUSH - 2 AMP	115 VOLTS AC RATING AT SEA LEVEL - 7 AMP
DIELECTRIC STRENGTH & INSULATION RES (BASIC SWITCH)	DIELECTRIC STRENGTH INSULATION RESISTANCE (50 VDC ±10%)
-BETWEEN TERMINALS AND EXPOSED NON-CURRENT CARRYING METAL	1000 V Rms, 500 A (MAX LEAKAGE) 1000 Megohms MIN
-BETWEEN TERMINALS OF MUTUALLY INSULATED CIRCUITS	1000 V Rms, 500 A (MAX LEAKAGE) 1000 Megohms MIN
-BETWEEN ALL UNCONNECTED TERMINALS OF THE SAME POLE	1000 V Rms, 500 A (MAX LEAKAGE) 1000 Megohms MIN
SWITCH RESISTANCE	N/A
RECOMMENDATION OR USE IN APPL LESS THAN .5 amps AND/OR 12 volts	⚠
MECHANICAL CHARACTERISTICS:	
ACTUATOR STRENGTH	25 LB
MOUNTING STRENGTH	25 LB
LIFE:	
MECHANICAL LIFE	50,000 MIN
ELECTRICAL LIFE AT FULL RATED LOAD	25,000 MIN
ENVIRONMENTAL:	
TEMPERATURE RANGE	-55° C TO +85° C
ALTITUDE RANGE	SEA LEVEL TO 50,000 FT
SHOCK	100 G
VIBRATION	10-500 Hz
MOISTURE RESISTANCE	UNSEALED
THERMAL SHOCK	N/A
SALT SPRAY	N/A
NOTE: INDUCTIVE LOADS USE AN3179-6 INDUCTOR, 115 VAC AT 75X PF	



- NOTES
- 1 - SWITCHES MARKED 1 & 3 HAVE 24K SOLID GOLD OVERLAY CONTACTS "23SX" TYPE BASIC SWITCH (MEETS REQUIREMENTS OF MIL-PRF-8805)
 - 2 - SWITCHES MARKED 2 & 4 HAVE SOLID SILVER CONTACTS "21SX" TYPE BASIC SWITCH (MEETS REQUIREMENTS OF MIL-PRF-8805)
 - 3 - SWITCHES DO NOT NECESSARILY OPERATE SIMULTANEOUSLY
 - 4 - PLATED TERMINALS WILL ACCEPT AMPS INC Ø .058 PIN RECEPTACLES
- ⚠ DULL FINISH ON LEVER AND BUSHING
 - ⚠ SWITCH NUMBERS STAMPED ON END OF BASIC SWITCHES
 - ⚠ TERMINAL DESIGNATION STAMPED ON BOTH SIDES OF UNIT
 - ⚠ OPERATING FORCE 1-5 LB WHEN APPLIED .125 ± .030 FROM TOP OF THE LEVER
 - ⚠ HARDWARE FURNISHED ASSEMBLED WITH SWITCH OR IN PACKET 15PA313-AT PER MIL-PRF-8805
 - ⚠ CONTACT HONEYWELL-MICRO SWITCH IF INFORMATION ON LOW ENERGY LOADS IS REQUIRED OR FOR HELP WITH SPECIFIC APPLICATIONS
 - ⚠ 11 - REPLACEMENT MOUNTING HARDWARE PACKET 15PA313-AT

MICRO SWITCH a Honeywell Division <small>FED. MFG. CODE 91829</small>	ASSEMBLY-TOGGLE SWITCH	CATALOG LISTING 64AT26 SERIES CHART 1	THIRD ANGLE PROJECTION
			SCALE FULL DO NOT SCALE PRINT UNLESS OTHERWISE SPECIFIED TOLERANCES ARE ONE PLACE (.01) ± .030 TWO PLACES (.001) ± .015 THREE PLACES (.000) ± .005 ANGLES ° ± WEIGHT .07 LB EST

ANSI Y14.5M-1982 APPLIES

64AT26 SERIES CHART 1
 ISSUE 5
 REVISIONS
 A 20149
 B 106768
 C 123867
 D 204176
 E 150051
 F 204183
 G 221897
 P.T.C./CAD 70
 TSM 180000
 SAV 180000
 SAV 180000

