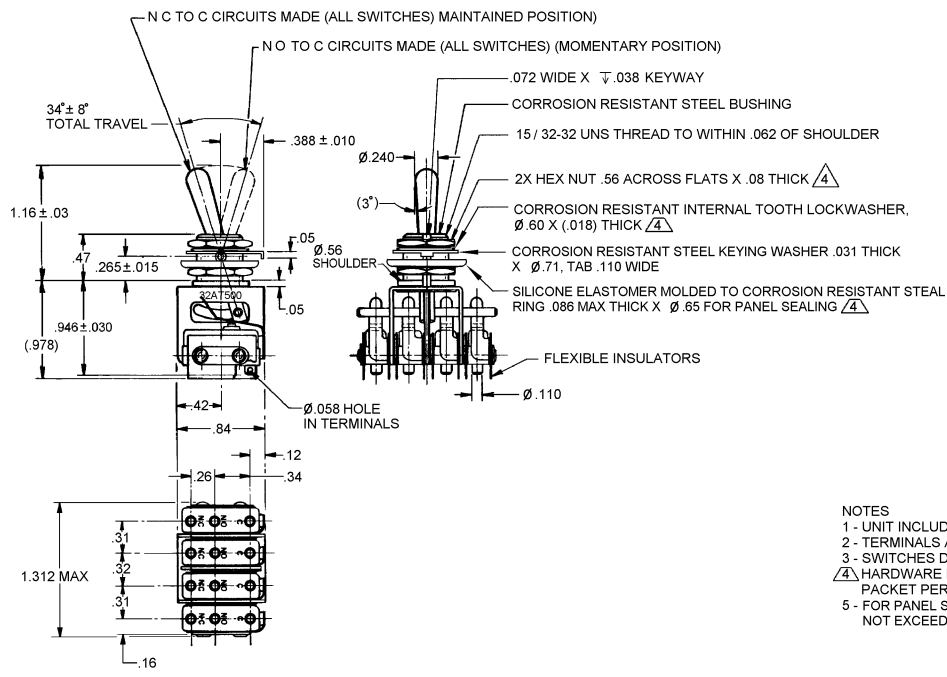
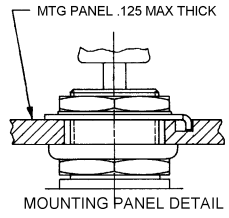


MICRO SWITCH
a Honeywell Division
FED. REG. CODE 91929

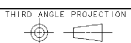
**ASSEMBLY -
TOGGLE SWITCH**

CATALOG LISTING
32AT500



- NOTES
- 1 - UNIT INCLUDES 4X CATALOG LISTING 115M23 BASIC SWITCH
 - 2 - TERMINALS ARE PLATED FOR SOLDERING
 - 3 - SWITCHES DO NOT NECESSARILY OPERATE SIMULTANEOUSLY
 - 4 - HARDWARE FURNISHED ASSEMBLED WITH SWITCH OR IN PACKET PER MIL-PRF-8805
 - 5 - FOR PANEL SEAL TO BE EFFECTIVE MOUNTING HOLE IN PANEL SHOULD NOT EXCEED .500 DIAMETER

THIS DRAWING COVERS A PROPRIETARY ITEM AND IS THE PROPERTY OF MICRO SWITCH, A DIVISION OF HONEYWELL. THIS DRAWING IS NOT TO BE COPIED OR USED WITHOUT THE APPROVAL OF MICRO SWITCH



CHARACTERISTICS	ELECTRICAL DATA
	CONTACT ARRANGEMENT 4X S P D T
	30 VOLTS DC RATING INDUCTIVE ----- SEA LEVEL ----- 1/2 AMP 50,000 FT ----- 1/2 AMP
	RESISTIVE ----- SEA LEVEL ----- 1 AMP 50,000 FT ----- 1 AMP
	MAXIMUM INRUSH ----- 2 AMP

SCALE	FULL
DO NOT SCALE PRINT	
UNLESS OTHERWISE SPECIFIED TOLERANCES ARE	
ONE PLACE	(.01) ± .030
TWO PLACE	(.001) ± .015
THREE PLACE	(.0001) ± .005
ANGLES	±
WEIGHT	

ANSI Y14.5M-1982 APPLIES

CATALOG LISTING 32AT500
 REPLACES 0001219
 RELEASE NO.
 ISSUE 1 OF 1
 M
 A
 REVISIONS
 CHECK 26 AUG 03
 SA V
 CHECK 26 AUG 03
 RASTER
 DRAWN
 C S L