

MICRO SWITCH

FREEPORT ILLINOIS, U.S.A
A DIVISION OF HONEYWELL

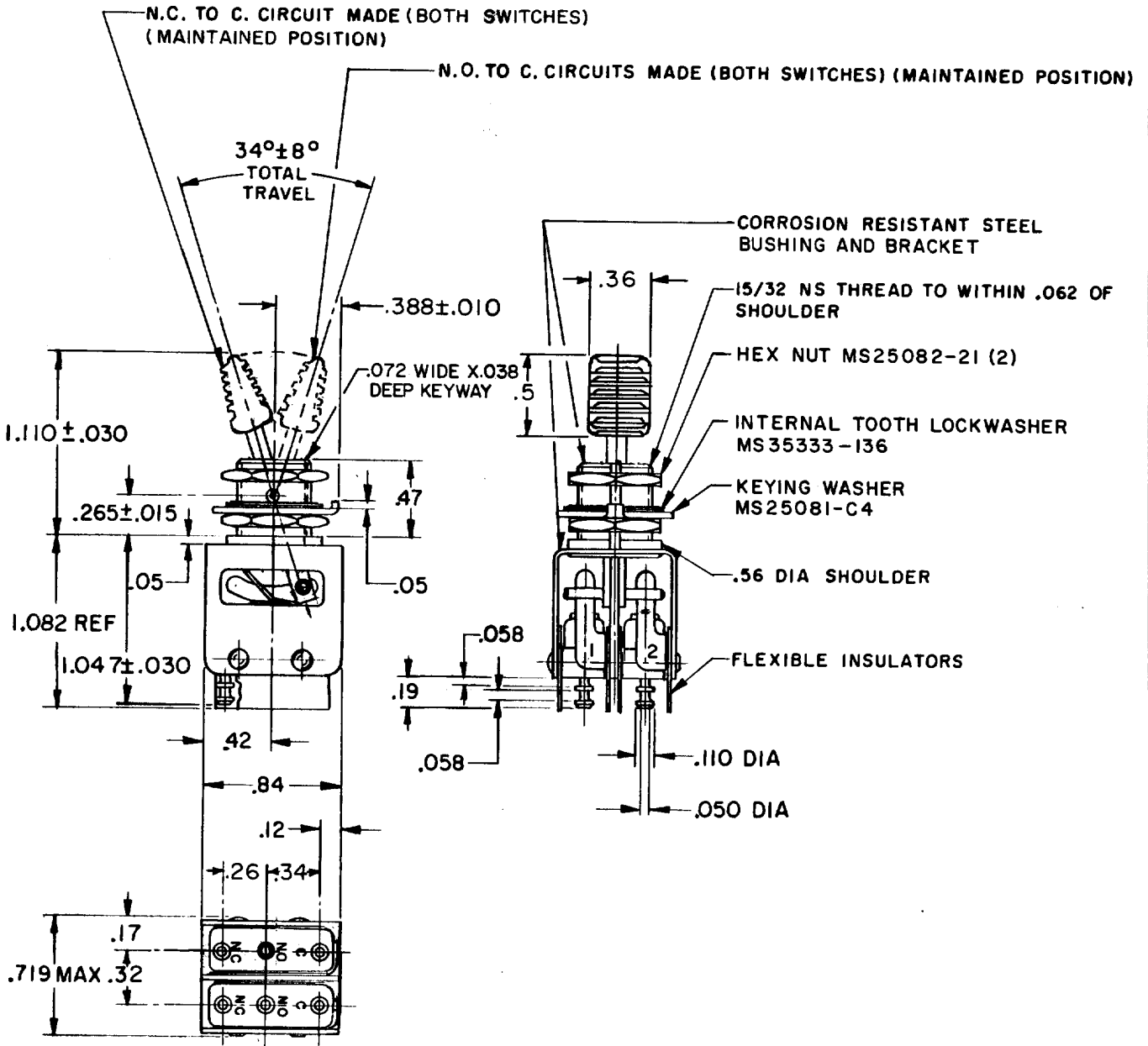
FED. MFG. CODE 91929

ASSEMBLY- TOGGLE SWITCH

CATALOG LISTING

23AT473-T2

MILITARY P/N
M8805/26-003



NOTE -

- 1- UNIT INCLUDES CAT. LIST. 2ISM284-T2 (MS25085-2) BASIC SWITCH (2)
- 2- TERMINALS ARE PLATED FOR SOLDERING
- 3- OPERATING POSITION SIMULTANEITY OF BOTH BASIC SWITCHES MUST BE WITHIN 10° OF LEVER TRAVEL

THIS DRAWING COVERS A PROPRIETARY ITEM AND IS THE PROPERTY OF MICRO SWITCH, A DIVISION OF HONEYWELL. THIS DRAWING IS NOT TO BE COPIED OR USED WITHOUT THE APPROVAL OF MICRO SWITCH.

CHARACTERISTICS

ELECTRICAL DATA

SCALE FULL

DO NOT SCALE PRINT

CONTACT ARRANGEMENT
S P D T (2)

UNLESS OTHERWISE NOTED
DIMENSIONS ARE IN INCHES

	SEA LEVEL			50,000 Ft.
	28 VDC	115 VAC	28 VDC	
Load	5	5	5	
Resistive	3	5	2.5	
Inductive	2.4	1.5	2.4	

TOLERANCES ARE:
ONE PLACE (.0) ±.030
TWO PLACE (.00) ±.015
THREE PLACE (.000) ±.005
ANGLES ±

WEIGHT .075 LB MAX

M 23AT473-T2
 DRAWING NUMBER
 ISSUE 7
 RELEASE NO. PR-1271
 REPLACES
 CHECK
 REVISIONS
 A CO27739 MBS 17 AUG 70
 B CO28134 SRH 5 NOV 70
 C CO28683 SRH 16 MAR 71
 D CO30985 JAH 8 SEP 72
 E CO50567 JAP 30 DEC 81
 F CO66089 DAW 7 FEB 91
 CHECK
 MBS 4 JUNE 70
 DRAWN
 O-90378-1A