

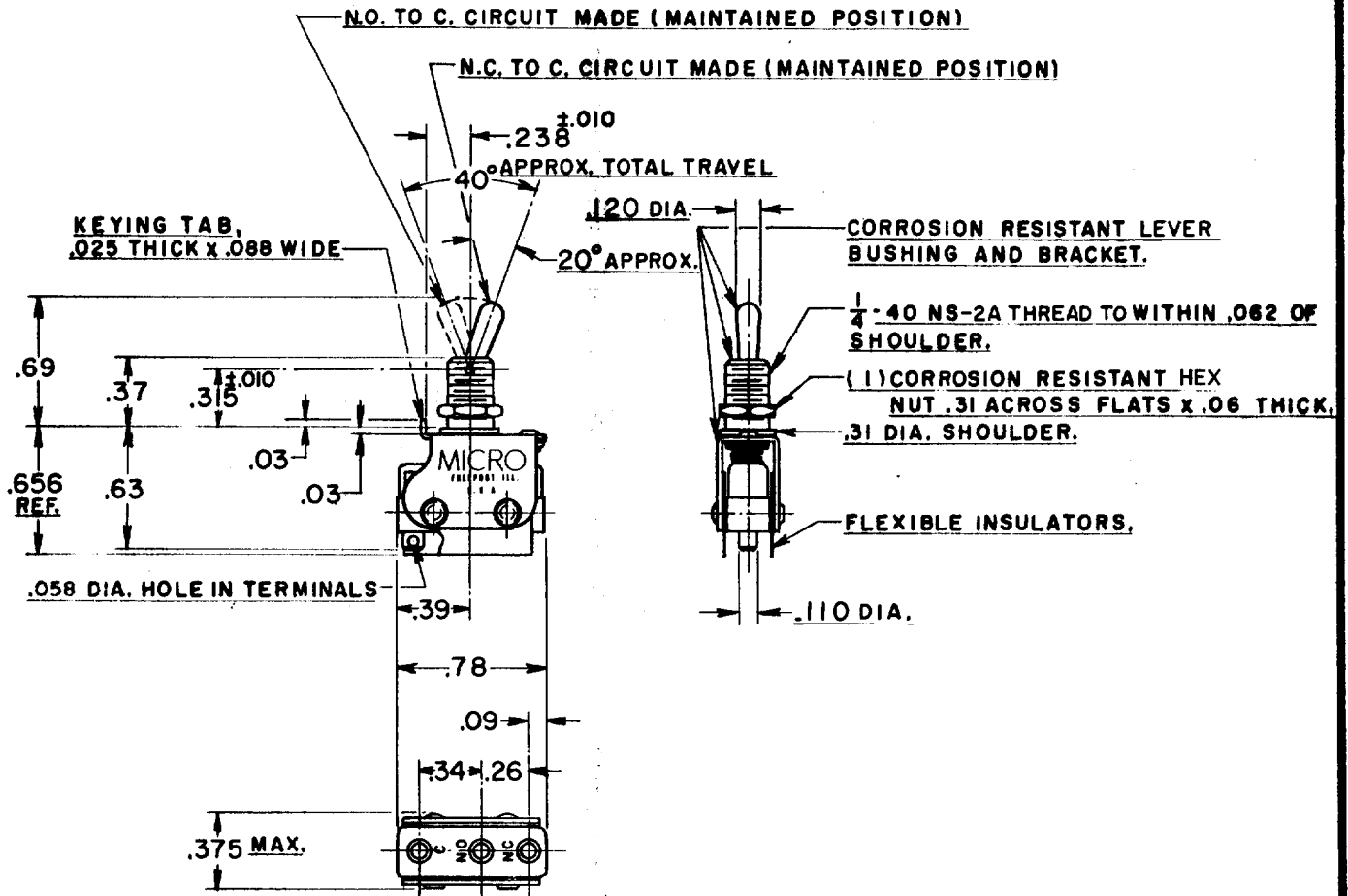
# MICRO SWITCH

A DIVISION OF MINNEAPOLIS-HONEYWELL REGULATOR COMPANY  
 FREEPORT, ILLINOIS  
 FED. MFR. CODE 91929

# ASSEMBLY- TOGGLE SWITCH

CATALOG LISTING  
**6AT102**

M 6AT102  
 DRAWING NUMBER  
 X 8  
 X 8  
 ISSUE  
 X 8  
 REVISIONS  
 A C.O. 11755  
 K.F.M. 26 JUNE 57  
 B CO13507  
 M.B.F. 2 APR 59  
 C CO37377  
 K P 30 JUL 78  
 D CO 37753  
 G.L.H. 3 NOV 76  
 E CO-51446  
 KAG 12 MAY 82  
 R.E.R. 3 OCT. 56  
 CHECK  
 R.L.Z. 15 OCT. 56  
 CHECK  
 W.R.D. 9 OCT. 56  
 CHECK  
 M.J.L. 9 OCT. 56  
 CHECK  
 RELEASE NO. SR 5681  
 REPLACES



**NOTE-**  
 1-UNIT INCLUDES (1) CAT. LIST. 11SM106 BASIC SWITCH. (A)  
 2-TERMINALS ARE PLATED FOR SOLDERING.

THIS DRAWING COVERS A PROPRIETARY ITEM AND IS THE PROPERTY OF MICRO SWITCH, A DIVISION OF HONEYWELL. THIS DRAWING IS NOT TO BE COPIED OR USED WITHOUT THE APPROVAL OF MICRO SWITCH.

CHARACTERISTICS	ELECTRICAL DATA		SCALE FULL
	CONTACT ARRANGEMENT S. P. D. T.	BREAK DISTANCE .010 MIN.	DO NOT SCALE PRINT
	<b>250 VAC</b> -----	5 AMP	<b>UNLESS OTHERWISE SPECIFIED</b> DIMENSIONS ARE IN INCHES <b>TOLERANCES ARE:</b> ONE PLACE (.0) $\pm .030$ TWO PLACE (.00) $\pm .015$ THREE PLACE (.000) $\pm .005$ ANGLES $\pm$ <b>WEIGHT .018 LB.</b>
	<b>30 VOLTS DC RATING</b>		
	<b>INDUCTIVE</b> ----- SEA LEVEL -----	3 AMP	
	50,000 FT. -----	2.5 AMP	
	<b>RESISTIVE</b> ----- SEA LEVEL -----	5 AMP	
	50,000 FT. -----	5 AMP	
	<b>(B) MAXIMUM INRUSH</b> -----	24 AMP	

FO-50378